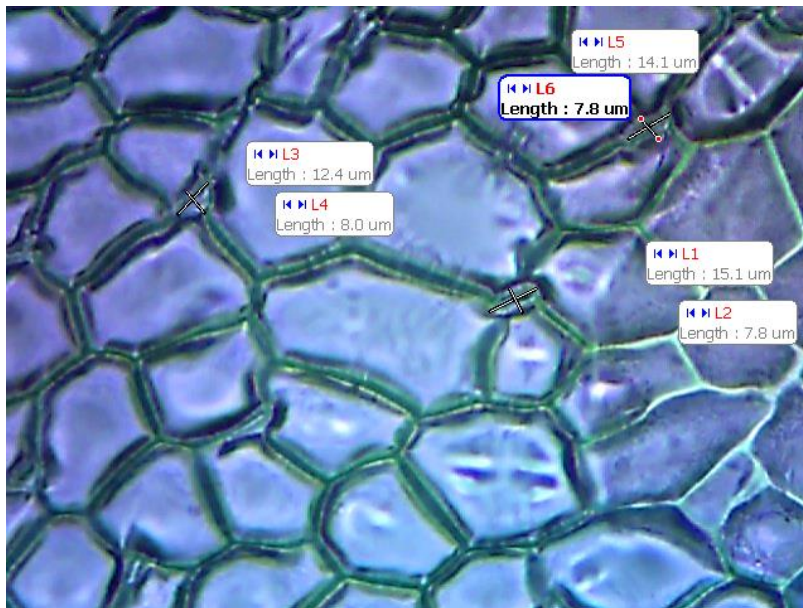


**Table S1:** The results of correlation analysis for the investigated traits of *Trifolium repens*.

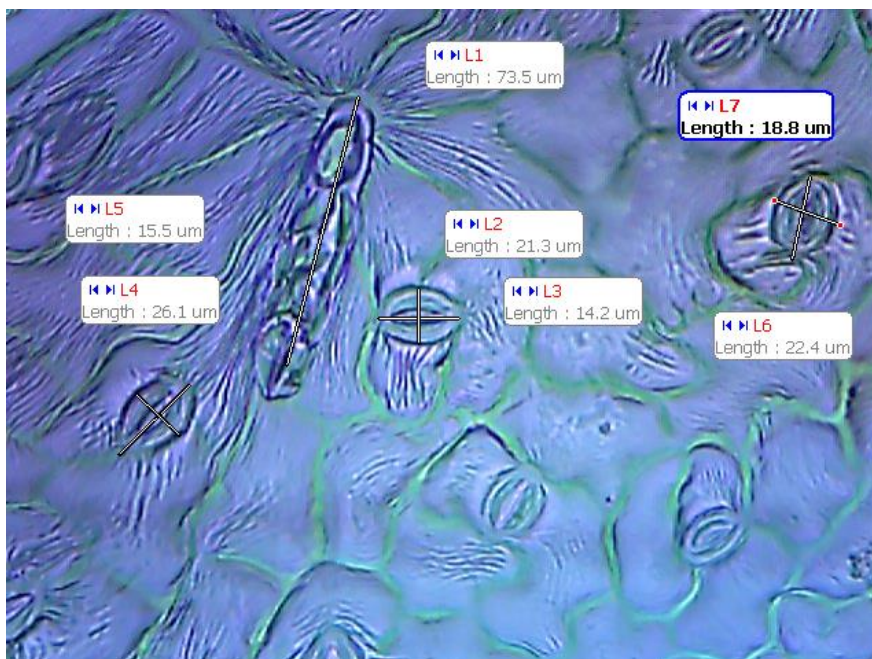
The trait	LL	PL	MLL	MLW	FLL	FLW	PL	CAL	CTL
PH	0.564	0.448	0.557	0.473	0.574	0.573	0.65	0.462	0.329
LL		0.851	0.996	0.954	0.958	0.967	0.911	0.34	0.488
PL			0.872	0.865	0.834	0.846	0.881	0.119	0.329
MLL				0.951	0.96	0.956	0.914	0.319	0.474
MLW					0.963	0.984	0.837	0.256	0.591
FLL						0.974	0.872	0.375	0.565
FLW							0.881	0.336	0.536
PL								0.378	0.452
CAL									0.848
The trait	LCTL	SHCTL	COL	FRW	FRL	NFL	SLULE	SLLLE	SWULE
PH	0.274	0.299	0.2	0.0888	0.0911	0.839	0.51	-0.566	0.727
LL	0.188	0.549	0.383	0.349	0.133	0.564	0.651	-0.532	0.634
PL	-0.00351	0.411	0.639	0.373	0.308	0.462	0.441	-0.399	0.371
MLL	0.183	0.544	0.445	0.359	0.172	0.543	0.559	-0.546	0.599
MLW	0.109	0.65	0.357	0.359	0.0596	0.466	0.669	-0.364	0.599
FLL	0.209	0.688	0.387	0.361	0.133	0.581	0.602	-0.438	0.585
FLW	0.147	0.643	0.312	0.384	0.0946	0.573	0.706	-0.42	0.664
PL	0.298	0.478	0.512	0.366	0.27	0.664	0.587	-0.524	0.517
CAL	0.796	0.671	0.246	-0.316	0.242	0.671	0.49	-0.469	0.476
CTL	0.508	0.831	0.313	0.0552	0.309	0.515	0.487	-0.343	0.403
The trait	SWLLE	TL	PLL	SPL	VBD	NSULE	NSLLE		
PH	-0.112	-0.133	-0.0385	0.288	0.601	0.0559	0.392		
LL	0.186	-0.00701	-0.172	0.121	0.911	-0.546	-0.0666		
PL	0.126	-0.0629	-0.536	-0.263	0.755	-0.301	0.0909		
MLL	0.189	-0.0175	-0.209	0.0844	0.886	-0.525	-0.0595		
MLW	0.315	0.0385	-0.118	0.109	0.942	-0.588	-0.158		
FLL	0.301	-0.0245	-0.149	0.12	0.921	-0.483	-0.0385		
FLW	0.224	-0.028	-0.137	0.13	0.972	-0.538	-0.0909		
PL	0.021	-0.21	-0.487	-0.0807	0.797	-0.28	0.133		
CAL	0.147	0.0769	0.049	0.312	0.35	0.154	0.0769		
CTL	0.249	-0.147	-0.00175	0.318	0.508	-0.0841	-0.14		
The trait	SHCTL	COL	FRW	FRL	NFL	SLULE	SLLLE	SWULE	SWLLE
LCTL	0.564	0.29	-0.433	0.102	0.407	0.33	-0.333	0.253	0.2
SHCTL		0.316	0.0679	0.088	0.369	0.524	-0.225	0.436	0.453
COL			0.0838	0.71	0.172	-0.123	-0.53	0.0246	-0.0175
FRW				0.288	-0.167	-0.107	-0.139	0.0604	-0.401
FRL					0.0736	-0.375	-0.606	0.0455	-0.518
NFL						0.643	-0.399	0.573	0.119
SLULE							-0.119	0.761	0.343
SLLLE								-0.664	0.448
SWULE									-0.147
The trait	TL	PLL	SPL	VBD	NSULE	NSLLE			
LCTL	0.154	-0.0334	0.137	0.116	0.182	0.0105			
SHCTL	0.0527	0.0757	0.243	0.612	-0.165	-0.165			
COL	-0.0702	-0.641	-0.467	0.158	0.172	0.0246			
FRW	-0.689	-0.317	-0.166	0.295	-0.231	-0.0959			
FRL	-0.263	-0.6	-0.575	0.0175	0.277	-0.0666			
NFL	0.00699	-0.14	0.232	0.615	0.035	0.413			
SLULE	0.154	0.186	0.481	0.769	0.427	-0.0281			
SLLLE	-0.0769	0.154	0.0877	-0.392	-0.0769	-0.105			
SWULE	0.231	0.291	0.34	0.762	-0.245	-0.014			
SWLLE	0.343	0.322	0.407	0.203	-0.399	-0.196			
TL		0.396	-0.0351	0.0839	-0.049	0.035			
PLL			0.773	-0.0035	-0.312	-0.301			
SPL				0.186	-0.375	-0.214			
VBD					-0.538	-0.0839			
NSULE						0.692			

**Note:** PH- plant height; LL- Leaf length; PL- petiole length; MLL- middle leaflet length; MLW- middle leaflet width; FLL- first leaflet length; FLW- first leaflet width; PL- peduncle length; CAL- calyx length; CTL- calyx tube length; LCTL- long calyx teeth length; SHCTL- short calyx teeth length; COL- corolla length; FRW- fruit width; FRL- fruit length; NFL - number of flowers; SLULE- stomata length on the upper leaf epidermis; SLLLE - stomata length on the lower leaf epidermis; SWULE - stomata width on the upper leaf epidermis; SWLLE- stomata width on the lower leaf epidermis; TL- trichomes length; PLL- palisade layer length; SPL - spongy layer length; VBD- vascular bundle diameter; NSULE- number of stomata on the upper leaf epidermis; NSLLE- number of stomata on the lower leaf epidermis

**Figure S1:** The upper leaf epidermis of *Trifolium repens*



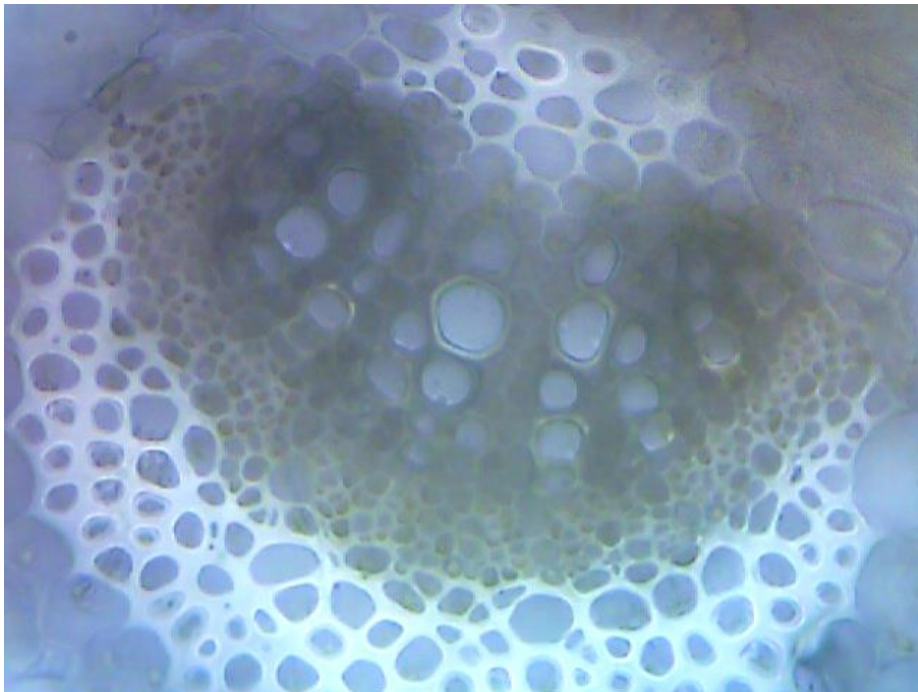
**Figure S2:** The lower leaf epidermis of *Trifolium repens*.



**Figure S3:** The leaf mesophyll of *Trifolium repens*



**Figure S4:** The leaf vascular bundle of *Trifolium repens*.





**Figure S5:** The *Trifolium repens* calyx teeth.



**Figure S6:** The *Trifolium repens* fruit.



**Figure S7:** The *Trifolium repens* seed.

