

# CONSPECTUS OF VEGETATION SYNTAXA IN SLOVENIA

Urban ŠILC<sup>1</sup> & Andraž ČARNI<sup>1,2</sup>

## Abstract

For the first time, an overview of plant communities in Slovenia is presented according to the Braun-Blanquet approach. In total 588 associations (and some communities classified into higher syntaxa) belonging to 51 classes have been registered in Slovenia. Additionally 149 syntaxa are mentioned as registered in the field or in the literature, but not documented with relevant material. Syntaxonomical classification is based on the “EuroChecklist” and includes also the Slovenian written definition of the high-rank syntaxa.

**Key words:** phytosociology, syntaxonomy, vegetation database.

## Izvleček

Prvič je predstavljen pregled vseh rastlinskih združb v Sloveniji razvrščenih po Braun-Blanquetovem principu. Ugotovili smo 577 asociacij (in nekaj združb uvrščenih v višje sintakse), ki pripadajo 47 vegetacijskim razredom registriranim v Sloveniji. Dodatno smo izpostavili 126 sintaksonov, ki smo jih opazili v naravi ali pa so jih omenili v literaturi, niso pa dokumentirani s popisnim gradivom. Sintaksonomska klasifikacija sledi seznamu “EuroChecklist”, zato obenem predstavljamo tudi slovenske definicije višjih sintaksonov.

**Ključne besede:** fitocenologija, sintaksonomija, vegetacijska podatkovna baza.

## 1. INTRODUCTION

Vegetation science in Slovenia has a long and fruitful tradition beginning with the first studies by Gabrijel Tomažič in 1928 (Robič & Wraber 2001, Zupančič 2003). All major vegetation types have been targeted so far, yet there is a clear bias towards forest communities. The major reason is because phytosociology (in its narrow sense – devoted mainly to classification of plant communities) was traditionally linked to forestry, mapping, planning and management of forest resources. While forests had therefore been well researched, other vegetation types had not been paid attention to or had been completely neglected. This has changed only in the recent decade.

There were some attempts to compile a catalogue of vegetation syntaxa in Slovenia, yet again – these were very much biased towards forests.

Wraber (1960) made the first attempt in this direction. Smole (1988) published a catalogue of forest communities used in mapping projects in various research institutions in Slovenia. Robič & Accetto (2001) prepared a more extensive list of forest plant communities, comprising also some non-forest syntaxa used for education at the Department of Forestry and Renewable Forest Resources of the University of Ljubljana. Other plant community accounts featured “red lists” of endangered vegetation (Gregori et al. 1996) or, occasionally, syntaxonomic or nomenclatural revision of a single high-rank syntaxon (Marinček et al. 1993, Zupančič 1999, 2007, Surina et al. 2004, Šilc & Čarni 2007, Poldini 2009).

The vegetation database of Slovenia using Turboveg (Hennekens & Schaminée 2001) software enabled first a less biased insight into the vegetation research in Slovenia (Šilc 2006). Nu-

<sup>1</sup> Institute of Biology ZRC SAZU, Novi trg 2, SI - 1000 Ljubljana, Urban@zrc-sazu.si, Carni@zrc-sazu.si

<sup>2</sup> University of Nova Gorica, Vipavska 13, SI - 5000 Nova Gorica

merical analyses of the collected relevés revealed which plant communities were well studied (and represented in the data set) and where there were obvious gaps.

Surely, some ideas of placement of the syntaxa presented in this paper will be controversial because of lack of field data and divergence of opinions about their classification. Yet, being the first comprehensive list of all syntaxa documented or presumed to occur (on the basis of observed vegetation stands which might be classified within the latter) in Slovenia, this is a stepping stone towards a detailed, critical and comprehensive national vegetation survey as already finalized (or underway) in many European countries such as the Netherlands, Germany, Austria, Czech Republic, Slovakia, and elsewhere.

The aims of this paper study are: (1) to compile a list of syntaxa known from (or presumed to occur in) Slovenia, (2) to classify them within a system of European high-rank syntaxa as presented in the so-called “EuroChecklist” (Mucina et al., in prep.) (3) to point out the obvious problems and gaps in our knowledge of syntaxonomy of the Slovenian vegetation, and (4) to introduce Slovenian written definitions of the high-rank syntaxa.

## 2. METHODS

Vegetation database of Slovenia (Šilc 2006, 2012), where the majority of accessible (published and from grey literature) relevés from the territory of Slovenia are stored, was a starting point for compilation of the list. Therefore for syntaxa stored in the database, a number of relevés classified are presented. For certain syntaxa (e.g. macrophytic vegetation) that were not researched according to the Braun-Blanquet approach (van der Maarel 2005) in Slovenia we used floristic data to evaluate the possible presence of these vegetation communities. Some communities that were noticed in the field but are not documented by published relevés were added as unpublished. For these data we are grateful to several researchers who contributed their knowledge to earlier versions of the list, and are mentioned next to these unpublished data.

The hierarchy of syntaxa is also shown by codes. The first number indicates class, first letter order, second letter alliance and second number association. These codes are also used in the Turboveg database.

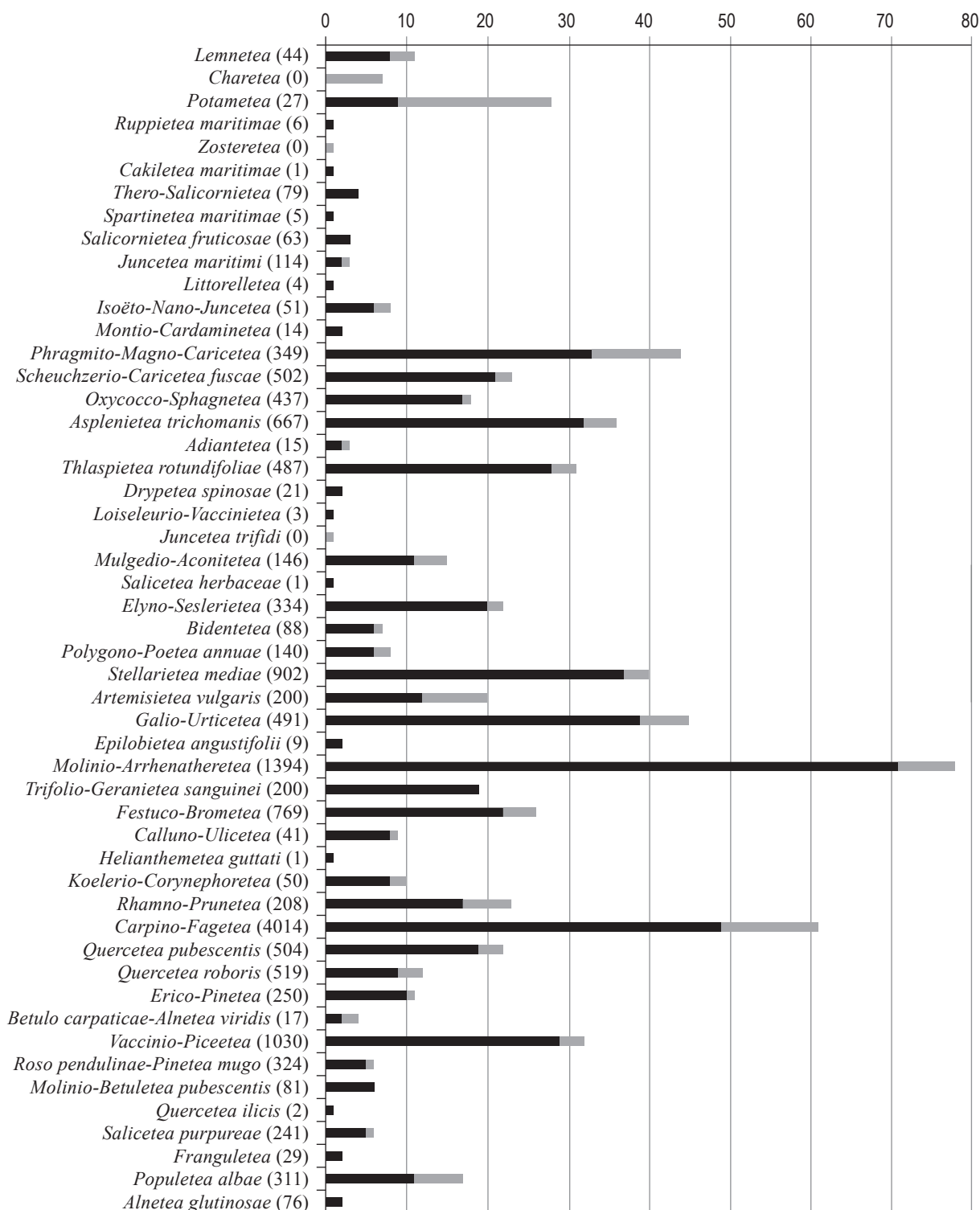
## 3. RESULTS AND DISCUSSION

The syntaxonomical scheme in general follows the synsystem of the so-called “EuroChecklist” of Mucina et al. (in prep.) down to alliance level and with modifications in some syntaxa that were already elaborated for the territory of Slovenia.

The present list of vegetation units follows the rules of the Code of Phytosociological Nomenclature, but some exceptions should be made to obtain information on the existence of some vegetation units that are not validly published. In Slovenia the idea of geographical division of vegetation communities was very alive, with three nominal classification and geographical races according to the modified system of Matuszkiewicz & Matuszkiewicz (1981). Some authors also neglected the rules of the Code and many names were kept in use, therefore we deliberately preserved those syntaxon names that will enable us to establish a starting point for syntaxonomical revisions of separate classes and vegetation as a whole on the basis of large database of relevés. We must take into consideration that in the Vegetation database of Slovenia (Šilc 2006, 2012) 86 % of relevés were classified into the synsystem by their authors and the rest also bear some information on the classification of plant communities.

The vegetation of Slovenia comprises 51 vegetation classes indicating great diversity (Figure 1). Classes with the largest number of syntaxa are *Molinio-Arrhenatheretea* and *Carpino-Fagetetea*. In both classes there are also a significant number of syntaxa that are not documented with relevés as they were only mentioned in some references. Another similar problem is represented by the vegetation of freshwater bodies that had been rarely investigated by the Braun-Blanquet method and the majority of syntaxa were introduced on the basis of floristic data. Three types of vegetation show also a high diversity of syntaxa and collected material: anthropogenic vegetation (classes *Stellarietea mediae*, *Artemisietea* and *Galio-Urticetea*), vegetation of rock crevices and rocks (classes *Asplenieta trichomanes* and *Thlaspietea rotundifoliae*) and vegetation of bogs and fens (classes *Scheuchzerio-Caricetea fuscae* and *Oxycocco-Sphagnetetea*).

The number of vegetation classes shows the high diversity of vegetation. The same is confirmed by the high number of associations and communities (588), nevertheless rather a high number of communities not documented (and



**Figure 1:** The number of syntaxa (associations and syntaxa on the rank of association) in different vegetation classes. The dark bar represents number of syntaxa supported by relevés and the grey bar the number of syntaxa mentioned as unpublished. The number of relevés is shown by the name of class in brackets.

**Slika 1:** Število sintaksonov (asociacij in sintaksonov na nivoju asociacije) v različnih vegetacijskih razredih. Temen del stolpca predstavlja število sintaksonov za katere obstaja popisno gradivo, sivi del pa število sintaksonov, ki jih v tekstu omenjamo kot neobjavljene. Število popisov je prikazano v oklepajih ob imenu razreda.

published) in the field by relevés (149) still points out the need for data collection and detailed, monographic treatments of some classes.

The list has been harmonized with the European checklist (Mucina et al. in prep) in order that the Slovenian classification would meet the common European standards and the syntaxa could be integrated into a wider framework. Therefore we amalgamated alliances *Carpinion orientalis* (*Ostryo-Carpinion orientalis*) and *Fraxino ornio-Ostryion* that were traditionally treated as two alliances (Čarni et al. 2009). The classification of altimontane and subalpine spruce forests on the southern edge of their distribution in northern Slovenia is not clear, because the proportion of species from deciduous forests increases towards the south (Wallnöfer 1993). As this diversity is in major cases treated on the level of geographical races (Zupančič 1999) and according to numerical analysis of material originating from Slovenia (Čarni et al. in prep.), the classification of these associations i.e. *Adenostylo glabae-Picceteum* and *Seslerio-Piceetum* within the *Chysanthemo-Piceion* was accepted (Wallnöfer 1993). The floodplain riparian forests on nutrient-rich alluvial soils *Alno-Fraxinetalia* are subdivided into two alliances: *Alnion incanae* and *Alno-Quercion* that appears only in the (north)-eastern part of the country.

As already stated, the classification of vegetation could be done using different approaches and this system of classification is only one view over this subject. But it gives a kick off for future syntaxonomical analyses that will result in complete elaboration of the Vegetation of Slovenia based on relevé databases and modern numerical techniques.

#### 4. ACKNOWLEDGEMENTS

We thank Igor Dakskobler, Mateja Germ, Petra Košir, Andrej Martinčič, Livio Poldini and many others for supplying us with valuable data on some communities and many comments on previous versions of the manuscript. Ladislav Mucina substantially improved our manuscript, and also allowed us to use the unpublished EuroChecklist. Tomaž Sajovic kindly checked the Slovenian translations. This project was funded from ARRS L1-6517.

#### 5. REFERENCES

- Čarni, A., Košir, P., Karadžić, B., Matevski, V., Redžić, S. & Škvorc, Ž. 2009: Thermophilous deciduous forests in Southeastern Europe. *Plant Biosystems* 143: 1–13.
- Exner, A. 2007: *Piceetalia* Pawł. 1928. In: Willner, W. & Grabherr, G. (ed.): Die Wälder und Gebüsche Österreichs. 1. Textband. Elsevier, München, pp. 184–208.
- Gregori, J., Martinčič, A., Tarman, K., Urbanc-Berčič, O., Tome, D. & Zupančič, M. 1996: Narava Slovenije, stanje in perspektive: zbornik prispevkov o naravni dediščini Slovenije. Društvo ekologov Slovenije, Ljubljana, 424 p.
- Hennekens, S. M. & Schaminée, J. H. J. 2001: TURBOVEG, a comprehensive data base management system for vegetation data. *Journal of Vegetation Science* 12: 589–591.
- Kopecký, K. 1992: Syntaxonomische Klassifizierung von Pflanzengesellschaften unter Anwendung der deduktiven Methode. *Tuexenia* 12: 13–24.
- Maarel van der, E. 2005: *Vegetation ecology*. Blackwell, Malden, 359 p.
- Marinček, L., Mucina, L., Poldini, L., Zupančič, M., Dakskobler, I. & Accetto, M. 1993: Nomenklatorische Revision der Illyrischen Buchenwälder (Verband *Aremonio-Fagion*). *Studia geobotanica* 12: 121–135.
- Matuszkiewicz, W. & Matuszkiewicz, A. 1981: Das Prinzip der mehrdimensionalen Gliederung der Vegetationseinheiten, erlauchtet am Beispiel der Eichen-Hainbuchenwälder in Polen. Vaduz, Rinteln, 123–148 p.
- Mucina, L. et al. 2012: EuroChecklist, in prep.
- Poldini, L. 2009: La diversità vegetale del Carso fra Trieste e Gorizia. Lo stato dell'ambiente. Edizione Goliardiche, Trieste, 732 pp.
- Robič, D. & Accetto, M. 2001: Pregled sintaksonomskega sistema gozdnega in obgozdnega rastlinja Slovenije: gradivo za pouk fitocenologije. Biotehniška fakulteta, Oddelek za gozdarstvo in obnovljive gozdne vire, Ljubljana, 18 p.
- Robič, D. & Wraber, T. 2001: Življenje in delo botanika Gabrijela Tomažiča (1899–1977). *Hladnikia* 12: 7–21.
- Šilc, U. & Čarni, A. 2007: Formalized classification of weed vegetation of arable land in Slovenia. *Preslia* 79: 283–302.

- Šilc, U. 2006: Slovenian Phytosociology in a Database: state of the art, basic statistics and perspectives. *Hladnikia* 19: 27–34.
- Šilc, U. 2012: Vegetation database of Slovenia. *Biodiversity & Ecology* 4 (in print)
- Smole, I. 1988: Katalog gozdnih združb: pregled gozdnovegetacijskih raziskav po srednjeevropski fitocenološki metodi v Sloveniji s seznamom vseh doslej opisanih gozdnih združb ter njihova razvrstitev po medsebojni sorodnosti. Inštitut za gozdno in lesno gospodarstvo, Ljubljana, 154 p.
- Surina, B., Dakskobler, I., Kaligarič, M. & Seliškar, A. 2004: Seznam sintaksonov. In: Čušin, B. (ur.) & al.: *Natura 2000 v Sloveniji*. Rastline. Založba ZRC, Ljubljana, pp. 168–172.
- Wallnöffer, S. 1993: *Vaccinio-Piceetea*. In: Mucina, L., Grabherr, G. & Wallnöffer, S. (ed.): *Pflanzengesellschaften Österreichs-Wälder und Gebüsche*. Gustav Fisher Verlag, Jena, Stuttgart, New York, pp. 283–337.
- Wraber, M. 1960: Fitocenološka razčlenitev gozdne vegetacije v Sloveniji. In: Lazar, J. (ed.): *Ad annum horti botanici Labacensis solemnem*. Ljubljana, pp. 49–98.
- Zupančič, M. 1999: Smrekovi gozdovi Slovenije. Slovenska akademija znanosti in umetnosti, Ljubljana, 222 p.
- Zupančič, M. 2003: Vegetacijska raziskovanja in kartiranje v Sloveniji. *Zbornik gozdarstva in lesarstva* 72: 5–18.
- Zupančič, M. 2007: Syntaxonomic problems of the classes *Vaccinio-Piceetea* and *Erico-Pinetea* in Slovenia. *Fitosociologia* 44 (2): 3–13.
- Dakskobler, I. & Čušin, B. 2003: Rastlinstvo in rastje Dolenje Trebuše in njene okolice. *Trebuški zbornik*, Tolminski muzej, Tolmin, s. 99–132.
- Dakskobler, I. & Marinšek, A. 2009: Pregled jelovih rastišč v Sloveniji. *Zbornik gozdarstva in lesarstva* (Ljubljana) 89: 43–54.
- Dakskobler, I. 2004: Gozdna vegetacija Bovškega (Julijske Alpe, severozahodna Slovenija). *Hladnikia* 17: 25–38.
- Dakskobler, I. 2005: Rastlinstvo in rastje (flora in vegetacija) Baške doline (zahodna Slovenija). *Razprave* 4. razreda SAZU (Ljubljana) 46–2: 5–59.
- Exner, A. 2007: *Vaccinio-Piceetea* Br.-Bl. et al. 1939. In: Willner W. & Grabherr, G.: *Die Wälder und Gebüsche Österreichs*. Spektrum, München, pp.183–218.
- Franz, W. R. 2002: Die Hopfenbuche (*Ostrya carpinifolia* Scop.) in Österreich und Nord-Slowenien: (Morphologie, Anatomie, Verbreitung, Standort und Soziologie). *Carinthia* II, 1–256.
- Kaligarič, M. 2004: Podmorski travniki s pozejdonovko (*Posidonium oceanicae*) (EU\_1120\*). In: Jogan, N., Kotarac, M. & Lešnik, A. (ed.) 2004: *Opredelitev območij evropsko pomembnih ne-gozdnih habitatnih tipov s pomočjo razširjenosti značilnih rastlinskih vrst*. Center za kartografijo favne in flore, Ljubljana, pp. 34–39.
- Košir, Ž. 1994: Ekološke in fitocenološke razmere v gorskem in hribovitem jugozahodnem obrobju Panonije. Ministrstvo za kmetijstvo in gozdarstvo, Ljubljana, 149 p.
- Košir, Ž. 2000: Upoštevanje lastnosti gozdnih združb pri gospodarjenju s sečnimi ostanki. *Gozdarski vestnik* 58 (10): 439–445.
- Košir, Ž. 2007: Položaj gorskih bukovih gozdov v Sloveniji. *Gozdarski vestnik* 65: 365–392, 409–421.
- Košir, Ž. 2010: Lastnosti gozdnih združb kot osnova za gospodarjenje po meri narave. *Zveza gozdarskih društev Slovenije*, *Gozdarska založba*, Ljubljana, 288 p.
- Marinček, L. 1994: Zur Nomenklatur der Hainbuchenwälder des *Erythronio-Carpinion*. In: (ed.): *Simpozij-Pevalek Flora i vegetacija Hrvatske*. Čakovec, pp. 57–62.
- Marković, L. 1982: Ruderalna vegetacija ter vegetacija posek in gozdnih robov. In: Mayer, E. (ed.): *Vegetacijska karta Postojna L33–77*. Tolmač k vegetacijskim kartam. SAZU, *Razred za naravoslovne vede*, Biološki inštitut Jovana Hadžija, Ljubljana, pp. 96–112.

## 6. APPENDIX REFERENCES

- Accetto, M. 1999: Floristična in vegetacijska opazovanja v ostenjih severovzhodne Kostelske. *Gozdarski vestnik* 57: 3–22.
- Accetto, M. 2006: Nomenklatura notica k sintaksonskemu uvrščanju vlažnih dobovo-gabrovih gozdov. *Samozaložba*, Ljubljana, 6 p.
- Čarni A. et al. (in prep.) Smrekovi in jelovi gozdovi v Sloveniji.
- Čarni, A., Košir, P., Marinček, L., Marinšek, A., Šilc, U. & Zelnik, I. 2008: Komentar k vegetacijski karti gozdnih združb Slovenije v merilu 1:50.000 – list Murska Sobota. *Pomurska akademsko znanstvena unija – PAZU*, Murska Sobota, 64 p.

- Martinčič, A. & Leskovar, I. 2002: Vegetacija. In: Gaberščik, A. (ed.): Jezero, ki izginja: monografija o Cerkniskem jezeru. Društvo ekologov Slovenije, Ljubljana, pp. 81–94.
- Petkovšek, V. & Seliškar, A. 1979: Vegetacija na Planinskem polju in njeno varstvo. Varstvo narave 12: 13–32.
- Poldini, L. 1985: Note ai margini della vegetazione carsica. *Studia geobotanica* 5: 39–48.
- Seliškar, A., 1996: Traviščna in močvirna vegetacija. In: Gregori, J., Martinčič, A., Tarman, K., Urbanc-Berčič, O., Tome, D. & Zupančič, M. (eds.): Narava Slovenije, stanje in perspektive. Društvo ekologov Slovenije, Ljubljana, pp. 99–106.
- Seljak, G. 1974: Traviška vegetacija Porezna. Univerza v Ljubljani, Biotehniška fakulteta, Ljubljana, 103 p.
- Wallnöfer, S. 1993: *Vaccinio-Piceetea*. In: Mucina, L., Grabherr, G. & Wallnöfer, S. Die Pflanzengesellschaften Österreichs, Teil III, Wälder und Gebüsche, Gustav Fischer Verlag, Jena, pp. 283–337.
- Wraber, T. 1971: Contributo alla conoscenza della vegetazione pioniera (*Asplenietea rupestris* e *Thlaspietea rotundifolii*) delle Alpi Giulie. Università degli Studi di Trieste, Trieste, 81 p.

Received 11. 10. 2011  
Revision received 14. 2. 2012  
Accepted 2. 3. 2012

## VEGETACIJA ACONALNIH RASTIŠČ

### Vegetation of azonal habitats

#### VEGETACIJA CELINSKIH VODA

#### Vegetation of freshwater bodies

##### **Lemnetea O. Bolòs & Masclans 1955**

Prosto plavajoče združbe vodne leče v mirnih, s hranili razmeroma bogatih celinskih vodah v toplejših predelih Evrope  
Free-floating duckweed communities of still, relatively nutrient-rich, fresh waters in warmer parts of Europe

##### **Lemnetalia minoris O. de Bolòs & Masclans 1955**

Vegetacija prosto plavajočih združb v mirnih, s hranili razmeroma bogatih celinskih vodah v Evropi  
Vegetation of free-floating communities of still, relatively nutrient-rich, freshwaters of Europe

##### **Lemnion minoris O. de Bolòs & Masclans 1955**

Prosto plavajoče združbe vodne leče v mirnih, s hranili razmeroma bogatih celinskih vodah v toplejših predelih Evrope  
Free-floating duckweed communities of still, relatively nutrient-rich, fresh waters in warmer parts of Europe

*Lemnetum minoris* Oberd. ex T. Müller & Görs 1960

*Lemno-Spirodeletum minoris* Oberd. ex T. Müller & Görs 1960

*Lemnetum trisulcae* Knapp & Stoffers 1962

*Riccietum fluitantis* Slavnić 1956

*Wolffo-Lemnetum gibbae* Bentham 1949

*Spirodolo-Salvinietum natantis* Slavnić 1952

*Lemno-Spirodeletum polyrrhizae* W. Koch 1954

##### **Utricularion vulgaris Passarge 1964**

Vegetacija prostoplavajočih mešink v mezotrofnih in evtrofnih vodah

Vegetation of free-floating communities of bladderworts in mesotrophic and eutrophic waters

*Lemno-Utricularietum vulgaris* Soó 1947

##### **Hydrocharitium morsus-ranae (Passarge 1964) Westhoff et Den Held 1969**

Vegetacija prostoplavajočih združb makrofitov v s hranili razmeroma bogatih vodah

Vegetation of free-floating communities of macrophytes in fairly nutrient-rich waters

*Hydrocharitium morsus-ranae* van Langendonck 1935

*Stratiotetum alotidis* Nowiński 1930

*Ceratophylletum demersi* Hild 1956

##### **Charetea F. Fukarek ex Krausch 1964**

Podvodne trate makroalg (parožic) Evrope

Submerged macro-algal (stonewort) swards of Europe

##### **Charetalia hispidae Sauer ex Krausch 1964**

Vegetacija podvodnih trat parožic v celinskih vodah Evrope

01			
01A			
01AA			
01AA01	6		
01AA02	11		
01AA03	8		
01AA04	4		
01AA05	unpubl. (Šilc)		
01AA06	unpubl. (Šilc)		
01AA07	unpubl. (Šilc)		
01AB			
01AB 01	4		
01AC			
01AC01	5		
01AC02	1		
01AC03	5		
02			unpubl. (Martincič & Leskovar 2002)
02A			

- Vegetation of submerged stonewort swards of water bodies of Europe  
**Charion fragilis Krausch 1964**  
 Vegetacija podvodnih trat parožic v nevtralnih do bazičnih in s karbonati bogatih ali evtrofnih vodah  
 Vegetation of submerged stonewort swards of neutral to alkaline and lime-rich or eutrophic waters  
*Charetum asperae* Corillion 1957  
*Charetum contrariae* Corillion 1957  
*Charetum tomentosae* Corillion 1957  
*Charetum fragilis* Fijałkowski 1960  
*Charetum vulgaris* Corillion 1957  
**Nitellion flexilis Krause 1969**  
 Vegetacija podvodnih trat parožic v kislih do nevtralnih in s karbonati siromašnih vodah  
 Vegetation of submerged stonewort swards of acidic to neutral and lime-poor waters  
*Charetum delicatulae* Doll 1989  
*Nitellum opacae* Corillion 1957
- Potametea Klika in Klika & Novák 1941**  
 Vegetacija makrofitских združb zakorenjenih (plavajočih ali potopjenih) rastlin v mezo- in evtrofnih celinskih vodah Evrazije  
 Vegetation of macrophyte communities of rooted (floating or submerged) plants of mesotrophic and eutrophic freshwaters of Eurasia  
**Callitricho-Batrachietalia Passarge 1978**  
 Vegetacija združb vkorenjenih makrofitov žabjega lasa, vodnih zlatic in rmancev v plitvih in včasih periodično suhих vodnih telesih Evrope  
 Vegetation of crosswort, crowfoot and milfoil rooted macrophyte communities of shallow and sometimes periodically dry waterbodies of Europe  
**Batrachion fluitantis Neuhäusl 1959**  
 Vegetacija vkorenjenih makrofitских združb vodnih zlatic in rmanca v plitvih tekočih celinskih vodah Evrope  
 Vegetation of crowfoot and milfoil rooted macrophyte communities of shallow moving freshwaters of Europe  
*Ranunculetum fluitantis* Allorge 1922  
*Berulium submersae* Roll 1939  
*Callitricho hamulatae-Ranunculetum fluitantis* Oberd. 1957  
*Ranunculo-Sietum erecto-submersi* (Roll 1939) T. Müller 1962  
*Veronica beccabungae-Calitrichetum stagnalis* (Oberd. 1957) T. Müller 1962
- Potamogetonetalia Koch 1926**  
 Združbe zakorenjenih, plavajočih ali potopjenih makrofitov v mirnih mezo- in evtrofnih celinskih vodah Evrazije  
 Communities of rooted, floating or submerged macrophytes of stagnant mesotrophic and eutrophic freshwaters of Eurasia  
**Nymphaeion albae Oberd. 1957**  
 Vegetacija zakorenjenih makrofitov s plavajočimi listi v mirnejših, s hranili bogatih celinskih vodah Evrope  
 Vegetation of rooted macrophytes with floating leaves of sheltered nutrient-rich freshwaters of Europe  
*Limnanthemum nymphaeoidis* Bellot 1951  
*Trapaetum natantis* Kárpáti 1963  
*Nymphaeetum albo-luteae* Nowinski 1928  
*Myriophylo-Nupharetum* W. Koch 1926  
*Polygonum ambibitium* comm.
- 02AA  
 02AA01 unpubl. (Šilc)  
 02AA02 unpubl. (Šilc)  
 02AA03 unpubl. (Šilc)  
 02AA04 unpubl. (Šilc)  
 02AA05 unpubl. (Šilc)  
 02AB  
 02AB01 unpubl. (Šilc)  
 02AB02 unpubl. (Šilc)
- 03  
 03A  
 03AA 5  
 03AA01 1 unpubl. (Šilc)  
 03AA02 unpubl. (Šilc)  
 03AA03 unpubl. (Šilc)  
 03AA04 unpubl. (Šilc)  
 03AA05 unpubl. (Šilc)  
 03B  
 03BA  
 03BA01 2  
 03BA02 1  
 03BA03 2  
 03BA04 unpubl. (Šilc)  
 03BA05 unpubl. (Šilc)



<b>Potamion Libbert 1931</b>			
Vegetacija zakorenjenih in plavajočih makrofitnih združb dristavca in njemu podobnih vrst Evrazije			
Vegetation of rooted and floating macrophyte potamogetonid communities of Eurasia			
<i>Hottonietum palustris</i> R. Tx. 1937	03BB	1	
<i>Potamogetonum lucentis</i> Hueck 1931	03BB01	7	
<i>Potamo perfoliati-Ranunculetum circinati</i> Sauer 1937	03BB02	1	
<i>Potamogetonum filiformis</i> W. Koch 1928	03BB03	3	
<i>Myriophyllo-Potamogetonum lucentis</i> Soó 1934	03BB04	unpubl. (Šilc)	
<i>Ceratophyllo-Potamogetonum crispum</i> Horvatić in Micevski 1961	03BB05	unpubl. (Šilc)	
<i>Ceratophylletum demersi</i> Hild 1956	03BB06	unpubl. (Šilc)	
<i>Potamogetonum pectinati</i> Carstensen 1955	03BB07	unpubl. (Šilc)	
<i>Najadatum marinae</i> Fukarek 1961	03BB08	unpubl. (Martinič & Leskovar 2002)	
<i>Potamogetonum alpini</i> Podbielkowski 1967	03BB09	unpubl. (Šilc)	
<i>Potamogetonum praelongum</i> Sauer 1937	03BB10	unpubl. (Šilc)	
<i>Myriophylletum spicati</i> Soó 1927	03BB11	unpubl. (Šilc)	
<i>Potamogeton pectinatus</i> comm.	03BB12	unpubl. (Šilc)	
<i>Potamogeton pusillus</i> comm.	03BB13	1	
<i>Potamogeton perfoliatus</i> comm.	03BB14	unpubl. (Šilc)	
<i>Potamogeton berchtoldii</i> comm.	03BB15	unpubl. (Šilc)	
<i>Potamogeton berchtoldii</i> comm.	03BB16	unpubl. (Šilc)	
Združbi s pripadnostjo razredu			
Other communities of the class			
<i>Potamogeton natans</i> - [ <i>Potametea</i> ]	03XX01	3	
<i>Elodea canadensis</i> - [ <i>Potametea</i> ]	03XX02	unpubl. (Šilc)	
<b>VEGETACIJA OBALNIH BLATNIH RAVNIN IN BRAKIČNIH VODA</b>			
Vegetation of coastal mud flats and brackish waters			
<b>Zosteretea S. Pignatti 1953</b>	04		
Travniki pozejdovke na blatnih in peščenih podlagah v morskem sublitoralu in evlitoralu			
Eel-grass swards on muddy and sandy substrates in the sea sublittoral and eulittoral zones			
<b>Posidonetalia Den Hartog 1976</b>	04A		
Mediterranski travniki pozejdovke			
Mediterranean eel-grass swards			
<b>Posidionion oceanicae Br.-Bl. 1933</b>	04AA		
Mediterranski travniki pozejdovke			
Mediterranean eel-grass swards			
<i>Posidonium oceanicae</i> Molinier 1958	04AA01	unpubl. (Kaligarič 2004)	

- Ruppiaetea maritimae** J. Tx. ex Den Hartog & Segal 1964  
 Podvodne zakoreninjene združbe brakičnih voda  
 Submerged rooted communities of brackish waters  
**Ruppialia** J. Tx. ex Den Hartog & Segal 1964  
 Podvodne zakoreninjene združbe brakičnih voda  
 Submerged rooted communities of brackish waters  
**Ruppiaetea maritimae** Br.-Bl. ex Westhoff in Bennema et al. 1943  
 Podvodne zakoreninjene združbe brakičnih voda  
 Submerged rooted communities of brackish waters  
*Ruppiaetea maritimae* Hocquette 1927
- 05  
 05A  
 05AA  
 05AA01 6
- VEGETACIJA SLANIŠČ, SIPIN IN MORSKIH KLIFOV**  
 Vegetation of salt marshes, sand dunes and sea cliffs
- Cakiletea maritimae** R. Tx. & Preising ex Br.-Bl. & R. Tx. 1952  
 Pionirska vegetacija nitrofilnih enoletnic na robu peščenih in prodnatih morskih obrežij na obalah Atlanika, Sredozemlja in evksinske regije  
 Pioneer vegetation of nitrophilous annuals on strandlines of sandy and shingle beaches of Atlantic, Mediterranean and Euxinic coasts  
**Euphorbietalia peplidis** Tx. ex Rivas Goday et Rivas-Mart. 1958  
 Halonitrofilna vegetacija na obrežjih Sredozemskega in Crnega morja  
 Halo-nitrophilous strandline vegetation of the Mediterranean and Black Sea shores  
**Euphorbion peplidis** R. Tx. ex Oberd. 1952  
 Sredozemska in kantabrijsko-atlantska halonitrofilna obalna vegetacija  
 Halo-nitrophilous Mediterranean and Cantabro-Atlantic strandline vegetation  
*Atriplici hastatae-Atriplicetum tataricae* Lavrentiades 1963 nom. invers. propos.  
 (syn. *Atriplicetum tatarici* Pignatti 1966)
- 06  
 06AA  
 06AA01 1
- Thero-Salicornietea** R. Tx. in R. Tx. & Oberd. 1958  
 Pionirske združbe enoletnih sukulentnih slanaš na periodično ali občasno poplavljenih rastiščih  
 Pioneer communities of annual succulent halophytes on periodically or occasionally flooded habitats  
**Thero-Salicornietalia** S. Pignatti 1953  
 Pionirske združbe enoletnih sukulentnih slanaš na periodično poplavljenih morskih rastiščih Atlanika in Sredozemlja  
 Pioneer communities of annual succulent halophytes on periodically flooded marine habitats of the Atlantic Ocean and the Mediterranean  
**Thero-Salicornion** Br.-Bl. 1933  
 Sredozemske pionirske združbe osočnikov na muljastih poljih in lagunah  
 Mediterranean pioneer saltwort communities of tidal flats and lagoons  
*Salicornietum venetae* Pignatti 1966  
*Suedo-Salicornietum patulae* Brullo & Funari ex Géhu & Géhu Franck 1984
- 07  
 07A  
 07AA01 39  
 07AA02 21

<i>Suaedo maritima</i> - <i>Bassietum hirsutae</i> Br.-Bl. 1928	07AA03	17
<i>Pholiuro-Spergularietum marginatae</i> Pignatti (1953) 1966	07AA04	2
<b><i>Spartinetea maritima</i> Tx. in Beeftink 1962</b>	08	
Pionirska trajna vegetacija metliča v območju bibavice na mulju in pesku		
Pioneer vegetation of perennial cord grasses on intertidal mud and sand		
<b><i>Spartinetalia glabrae</i> Conard 1935</b>	08A	
Pionirska trajna vegetacija metliča v območju bibavice na mulju in pesku		
Pioneer vegetation of perennial cord grasses on intertidal mud and sand		
<b><i>Spartinin glabrae</i> Conard 1935</b>	08AA	
Pionirska trajna vegetacija metliča v območju bibavice na mulju in pesku		
Pioneer vegetation of perennial cord grasses on intertidal mud and sand		
<i>Limonio-Spartinetum maritima</i> (Pignatti 1966) Beeftink & R. Tx. 1973	08AA01	5
<b><i>Salicornietea fruticosae</i> Br.-Bl. &amp; R. Tx. ex A. Bolòs y Vayreda 1950</b>	09	
Sredozemske in termo-atlantske trajne zelnate in polgrmičaste združbe na slanišjih		
Mediterranean and thermo-atlantic perennial salt-marsh herblands and scrub		
<b><i>Salicornietalia</i> Br.-Bl. 1933</b>	09A	
Sredozemska in termo-atlantska halofilna polgrmišča sukulentnih metlikov v območju bibavice in celinskih občasno poplavljenih rastiščih		
Mediterranean and thermo-atlantic halophilous coastal tidal and inland temporary flooded succulent chenopod scrub		
<b><i>Salicornion fruticosae</i> Br.-Bl. 1933</b>	09AA	
Sredozemska in termo-atlantska obalna vegetacija sukulentnih pritlikavih grmičastih metlikov v območju bibavice		
Mediterranean and thermo-atlantic intertidal succulent dwarf chenopod scrub		
<i>Puccinellio festuciformis-Arthrocnemum fruticosi</i> (Br.-Bl. 1928) Géhu 1976	09AA01	26
<i>Limonio nar-bonensis-Artemisietum coerulecentis</i> Horvatić 1934 corr. Géhu & Biondi 1996	09AA02	19
<i>Puccinellio festuciformis-Halimionietum portulacoidis</i> Géhu et al. 1992	09AA03	18
<b><i>Juncetea maritimi</i> Br.-Bl. in Br.-Bl. et al. 1952</b>	10	
Trajna travišča in podobna zeliščno bogata vegetacija obmorskih in celinskih slanišč ter morskih klifov Sredozemlja, Atlantika in arktičnih oceanov		
Perennial grasslands and related herb-rich vegetation of coastal and inland salt-marshes and sea-cliffs of the Mediterranean, Atlantic and Arctic Oceans		
<b><i>Juncetalia maritimi</i> Br.-Bl. ex Horvatić 1934</b>	10A	
Sredozemska in termo-atlantska visoka ločja slanih mokrišč		
Mediterranean and thermo-atlantic tall-rush saline wetland vegetation		
<b><i>Juncion maritimi</i> Br.-Bl. ex Horvatić 1934</b>	10AA	
Sredozemska obmorska slana mokrišča z ločkovji		
Mediterranean coastal tall-rush saline marshland vegetation		
<i>Limonio nar-bonensis-Puccinellietum palustris</i> (Pignatti 1966) Géhu & Scopp. in Géhu et al. 1984	10AA01	87
<i>Juncetum maritimi-acute</i> Horvatić 1934	10AA02	27
<i>Limonio nar-bonensis-Crithmetum maritimi</i> Gamper & Bacchetta 2001	10AA03	unpubl. (Poldini 2009)

VEGETACIJA IZVIROV, VODNIH BREGOV (OBREŽIJ) IN MOČVIRIJ  
Vegetation of springs, shorelines and swamps

<b>Littorelletea Br.-Bl. &amp; R. Tx. ex Westhoff et al. 1946</b>	11
Trate sita in združbe mešink v oligotrofnih vodah	
Hairgrass swards and bladderwort communities in oligotrophic waters	
<b>Littorelletalia uniflorae W. Koch ex R. Tx. 1937</b>	11A
Vegetacija trat sita in sorodnih združb v oligotrofnih, stoječih ali počasi tekočih vodah Holarktika	
Vegetation of hairgrass swards and related communities in oligothropic, standing or slow-flowing waters of the Holarctis	
<b>Eleocharitum acicularis Pietsch ex Dierssen 1975</b>	11AA
Vegetacija amfibijskih rastlin (dvoživk) oligotrofnih in mezotrofnih voda z nihajočo gladino v zmernem in borealnem pasu Evrope	
Vegetation of amphibious plants in fluctuating shallow oligothropic and mesotrophic waters of temperate and boreal Europe	
<b>Littorello lacustris-Eleocharitetum acicularis Jouanne 1925</b>	11AA01 4
<b>Isoëto-Nano-Juncetea Br.-Bl. &amp; R. Tx. ex Br.-Bl. et al. 1952</b>	12
Pionirska prehodna vegetacija pritlikavih ostričevk na periodično poplavljenih habitatih	
Pioneer ephemeral dwarf-cyperaceous vegetation on periodically flooded (freshwater) habitats	
<b>Nanocyperetalia Klika 1935</b>	12A
Pionirska prehodna poletno-jesenska vegetacija pritlikavih ostričevk na periodično poplavljenih tleh v zmernem pasu Evrope	
Pioneer ephemeral summer-autumn vegetation on periodically flooded soils of temperate Europe	
<b>Nanocyperion W. Koch 1926</b>	12AA 1
Pionirska vegetacija pritlikavih ostričevk na občasno poplavljenih in s hranili siromašnih rastiščih v srednji in zahodni Evropi	
Pioneer dwarf-cyperaceous vegetation of temporarily flooded nutrient-poor habitats of Central and Western Europe	
<b>Polygono-Heleocharietum ovatae Egger 1933</b>	12AA01 18
<b>Heleocharito acicularis-Limoselletum aquaticae Wendelberger-Zelinka 1952</b>	12AA02 6
<b>Dichostyloido micheliani-Gnaphalietum uliginosae Timár 1947</b>	12AA03 4
(syn. <i>Lindernio-Dichostyletum micheliani</i> Slavnić 1951)	
<b>Polygono avicularis-Plantagnetum intermediae Seliškar in Trpin et al. 1995</b>	12AA04 10
<b>Cyperetum flavescens W. Koch 1926</b>	12AA05 unpubl. (Surina et al. 2004)
<b>Eleocharito-Caricetum bohemicae Klika 1935</b>	12AA06 unpubl. (Surina et al. 2004)
(incl. <i>Lindernio-Eleocharitetum ovatae</i> Pietsch 1973)	
Združbi s pripadnostjo razredu	
Other communities of the class	
<b>Cyperus fuscus-[Isoëto-Nano-Juncetea]</b>	12XX01 2
<b>Plantago intermedia-[Isoëto-Nano-Juncetea]</b>	12XX02 10

**Montio-Cardaminetea Br.-Bl. & Tx. ex Klika & Hadač 1944**

Vegetacija hladnih izvirov, običajno prevladujejo mahovi  
Vegetation of cold springs, commonly dominated by bryophytes

- Cardamino-Chrysosplenetalia Hinterlang 1992**  
 Vegetacija izvirov mehke vode v senčnih gozdnih habitatih od nižin do gorskega pasu v srednji in severozahodni Evropi  
 Vegetation of soft-water springs in shady forest habitats in the sub-montane and montane belts of Central European mountains  
 13A  
 13AA  
**Caricion remotae Kästner 1941**  
 Združbe blatnih in senčnih izvirov v okviru gozdov od nižin do gorskega pasu v srednji in severozahodni Evropi  
 Communities of muddy, shady water-springs in forested habitats from lowland up to the montane belt of Central and north-west Europe  
 13AA01 unpubl. (Čarni)  
 13B  
**Cardamino-Chrysosplenetium alternifolii Mass 1959 em. Zechmeister 1993**  
**Montio-Cardaminetalia Pawłowski et al. 1928**  
 Vegetacija hladnih, oligotrofnih izvirov v območju mešnih gozdov in iglastih gozdov in v oromediteranskem pasu Evrope  
 Vegetation of cold, oligotrophic water-springs of the nemoral and boreal zones, and of oro-mediterranean mountain belt of Europe  
 13BA  
**Cratoneurion commutati Koch 1928**  
 Z mahovi bogata vegetacija apnenčastih izvirov v zgornjem montanskem in subalpinskem pasu Evrope  
 Moss-rich vegetation of calcareous springs in supramontane and subalpine belts of Europe  
 13BA01 12  
 13BA02 2  
**Cratoneuretum falcati Gams 1927**  
**Cratoneuretum commutati Aichinger 1933**  
 14  
**Phragmito-Magno-Caricetea Klika in Klika & Novák 1941**  
 Vegetacija trstičij, šajšij in zelišč ob celinskih ali brakičnih vodah in vodotokih v Evraziji  
 Reeds, sedge beds and herbland vegetation of freshwater or brackish water bodies and streams of Eurasia  
 14A  
**Phragmitetalia Koch 1926**  
 Trstičja, šajša in zelišča mezo do evtrofnih stoječih ali počasi tekočih celinskih ali brakičnih vodnih teles v Evraziji  
 Reeds, sedge beds and herblands of mesotrophic and eutrophic stagnating or slowly flowing freshwater or brackish water bodies of Eurasia  
 14AA  
**Phragmition communis Koch 1926**  
 Močvirska trstičja v mezo- do evtrofnih stoječih celinskih vodah ali počasi tekočih vodotokih  
 Reed swamp vegetation of mesotrophic and eutrophic standing freshwater bodies or gently moving streams  
 14AA01 49  
 14AA02 6  
 14AA03 5  
 14AA04 9  
 14AA05 5  
 14AA06 4  
 14AA07 unpubl. (Martinič & Leskovar 2002)  
 14AA08 10  
 14AA09 11  
 14AA10 1  
 14AA11 30  
 14AA12 11  
 14AA13 15  
 14AA14 unpubl. (Seliškar 1996)  
 14AA15 unpubl. (Čarni)  
**Rorippo amphibibiae-Eleocharitetum acicularis Martinčič 2002**  
**Scirpetum maritimi Van Langendonck 1931**  
**Typhetum shuttleworthii Soó 1927**  
**Cicuto-Caricetum pseudocyperi Boer & Sissingh in Boer 1942**  
**Phragmiti-Typhetum minimae Trinajstić 1964 nom. nud.**

<b>Magno-Caricetalia Pignatti 1953</b>	14B	
Močvirna vegetacija šašev v zmernem in borealnem pasu Evrazije		
Sedge bed marsh vegetation of boreal and temperate Eurasia		
<b>Magno-Caricion elatae Koch 1926</b>	14BA	
Močvirna vegetacija šašev s prevladujočimi šopastimi šasi na s hranili bogatih glinastih tleh zmernega pasu Evrope (rastišča so dalj časa poplavljena in poleti ni sušnega obdobja)		
Sedge bed marsh vegetation dominated by tussock sedges on nutrient-rich clayey soils of temperate Europe		
<i>Caricetum elatae</i> Koch 1926	14BA01	35
<i>Mariscetum serrati</i> Zobrist 1935	14BA02	15
<i>Caricetum acutiformis</i> Egger 1933	14BA03	unpubl. (Šilc)
<i>Caricetum paradoxae</i> Aszód 1936	14BA04	1
<i>Caricetum paniculatae</i> Wangerin ex von Rochow 1951	14BA05	4
<i>Galio palustri-Caricetum rostratae</i> Martinčić & Seliškar 2004	14BA06	19
<i>Euphorbio villosae-Cladietum marisci</i> Accetto 2001	14BA07	1
<b>Magno-Caricion gracilis Géhu 1961</b>	14BB	
Močvirna vegetacija šašev na s hranili bogatih glinastih tleh zmernega pasu Evrope		
Sedge bed marsh vegetation on nutrient-rich clayey soils of temperate Europe		
<i>Caricetum gracilis</i> Almquist 1929	14BB01	52
<i>Caricetum vesicariae</i> Chouard 1924	14BB02	5
<i>Galio palustri-Caricetum ripariae</i> Bal.-Tul. et al. 1993	14BB03	2
<i>Phalaridetum arundinaceae</i> Libbert 1931	14BB04	15
<i>Eleocharitetum palustris</i> Ubrisz 1948	14BB05	2
<i>Filipendulo-Caricetum randalpiniae</i> Stanić 2009	14BB06	7
<i>Caricetum tricostato-vulpinae</i> Horvatić 1930	14BB07	12
<i>Caricetum vulpinae</i> Soó 1927	14BB08	unpubl. (Šilc)
<i>Ranunculus sardous-Agrostis canina</i> comm.	14BB09	1
<b>Carici-Rumicion hydrolopathi Passarge 1964</b>	14BC	
Zelišna vegetacija na nestabilnih organskih substratih v mezotrofnih vodah zmernega in borealnega pasu Evrazije		
Herland vegetation of unstabilized organic substrates in mesotrophic waters of boreal and temperate Eurasias		
<i>Oenanthe aquaticae-Roripetum amphibiae</i> Lohm. 1950	14BC01	4
<i>Sagittario-Sparganietum emersi</i> R. Tx. 1953	14BC02	1
<i>Eleocharito palustri-Hippuridetum vulgaris</i> Passarge 1955	14BC03	unpubl. (Martinčić & Leskovar 2002)
<i>Scirpetum radicans</i> Hejný in Hejný & Husák 1978	14BC04	2
Združba s pripadnostjo redu		
Other community of the order		
<i>Sium latifolium</i> -[ <i>Phragmitetalia</i> ]	14BX01	unpubl. (Martinčić & Leskovar 2002)
<b>Nasturtio-Glycerietalia S. Pignatti 1953</b>	14C	
Zelišča in šasi ob relativno dobro prezračenih celinskih tekočih vodah zmernega in sredozemskega dela Evrope in Madeira		
Herblands and sedge beds along relatively well oxygenated freshwater flowing streams of temperate and Mediterranean Europe and Madeira		
<b>Glycerio-Sparganion Br.-Bl. &amp; Sissingh in de Boer 1942</b>	14CA	

Zeliščna vegetacija ob manjših vodotokih in plitvih vodnih telesih zmernega pasu Evrope	14CA01	7
Herbland vegetation along small freshwater streams and in shallow water bodies of temperate Europe	14CA02	1
<i>Glycerietum fluitantis</i> Egglér 1933	14CA03	4
<i>Glycerietum plicatae</i> Kulczyński 1928	14CA04	unpubl. (Petkovšek & Seliškar 1979)
<i>Nasturtietum officinalis</i> Seibert 1962	14CA05	unpubl. (Šilc)
<i>Scirpo-Sparganietum</i> Petkovšek & Seliškar 1979 nom. nud.	14CA06	unpubl. (Šilc)
<i>Cardamino amarae-Beruletum erecti</i> Turonova 1985	14CB	
<i>Veronica beccabunga</i> comm.		
<b>Phalaridion arundinaceae</b> Kopecký 1961		
Vegetacija trstičja (pisanke) ob celinskih tekočih in sezonsko nihajočih vodotokih zmernega pasu Evrope		
Reed vegetation along freshwater flowing and seasonally fluctuating streams of temperate Europe	14CB01	3
<i>Rorippo-Phalaridietum</i> Kopecký 1961		

#### VEGETACIJA NIZKIH IN VISOKIH BARIJ TER MOČVIRIJ Vegetation of the bogs and fens

##### **Scheuchzerio palustris-Caricetea nigrae** Tx. 1937 nom. mut.

Vegetacija prehodnih barj

Vegetation of transitional mires, fens and bog hollows

##### **Scheuchzerietalia palustris Nordhagen ex Tx. 1937**

Barja z nizkimi šaši, ki se razvijejo na oligotrofnih do oligomezotrofnih šotičih

Small-sedge mires developing on oligotrophic and oligo-mesotrophic peats

##### **Rhynchosporion albae Koch 1926**

Vegetacija stoječih, kisljih, distrofičnih voda v vodnih očesih na šotnih barjih z globoko šoto

Vegetation of stagnant, acid, dystrophic waters in pools of Sphagnum bogs on deep peats

*Caricetum limosae* Osvald 1923

*Sphagno tenelli-Rhynchosporietum albae* Osvald 1923

(syn. *Rhynchosporietum albae* W. Koch 1926, *Rhynchosporietum fuscae* (Paul & Lutz 1941) Braun 1968)

*Drosero-Caricetum echinatae* Horvat (1950) 1962

##### **Caricion lasiocarpae Vanden Berghen in Lebrun et al. 1949**

Mezotrofna barja s šaši vlažnih rastišč na šotnih in mineralnih tleh

Mesotrophic sedge fens of wet sites on peat and mineral soils

*Caricetum lasiocarpae* Osvald 1923

Združba s pripadnostjo redu

Other community of the order

*Scheuchzerietalia palustris*- [*Scheuchzerietalia palustris*]

##### **Caricetalia davallianae Br.-Bl. 1949**

Vegetacija nizkih barj z nizkimi šaši na oligomezotrofnih apnenčastih barjanskih tleh v izvirih in na nizkih barjih

Small-sedge rich-fen vegetation of oligo-mesotrophic calcareous peaty soils in springs and shallow fens

**Caricion davallianae Klika 1934**

- Vegetacija nizkih barjz s nizkimi šaši ob apnenčastih oligotrofnih potokih, soligenih barjih in močvirjih na sipinah v nižinah  
 Small-sedge rich-fen vegetation of calcareous oligotrophic flushes, soligenous mires and dune slacks at low altitudes
- |   |                              |
|---|------------------------------|
| <i>Caricetum rostratae</i> Osvald 1923  | 15BA                         |
| <i>Schoenetum ferruginei</i> Du Rietz 1925  | 15BA01 53                    |
| (syn. <i>Primulo-Schoenetum ferruginei</i> Oberd. (1957) 1962)                            | 15BA02 106                   |
| <i>Junco obtusiflori-Schoenetum nigricantis</i> Allorge 1921                              |                              |
| (syn. <i>Schoenetum nigricantis</i> W. Koch 1926)   | 15BA03 29                    |
| <i>Caricetum davallianae</i> Dutoit 1924  | 15BA04 35                    |
| <i>Eleocharitetum pauciflorae</i> Lüdi 1921   | 15BA05 8                     |
| <i>Eriophoro-Caricetum paniceae</i> Horvat ex Trinajstić 2002                             | 15BA06 9                     |
| <i>Drepanolado revolutis-Trichophoretum cespitosi</i> Nordhagen 1928                      | 15BA07 10                    |
| <i>Trichophoretum alpini</i> Braun (1961) 1968  | 15BA08 3                     |
| <i>Amblystegio stellati-Caricetum dioicae</i> Osvald 1925                                 | 15BA09 8                     |
| (syn. <i>Parnassio-Caricetum nigrae</i> Oberd. 1957, <i>Caricetum dioicae</i> Braun 1968) | 15BA12 4                     |
| <i>Astrantio carnioicae-Schoenetum nigricantis</i> Daksobler 2010 nom. inval.             | 15BA10 unpubl. (Seljak 1974) |
| <i>Molinio coeruleae-Caricetum hostianae</i> Trinajstić 2002                              | 15BA11 unpubl. (Čarni)       |
| <i>Carici-Blysmetum compressi</i> Egger 1933  | 15C                          |

**Caricetalia nigrae W. Koch 1926 nom. mut.**

Barja na mezotrofni in oligotrofni šoti in šotnih mineralnih tleh

Mires developing on mesotrophic and oligomesotrophic peats and peaty mineral soils

**Caricion canescenti-nigrae Nordhagen 1937 nom. mut.**

Močvirja s prevladujočimi šaši in zelišči na nekarbonatnih tleh v zmernem delu Evrope in na višjih nadmorskih višinah v Sredozemlju

Fen meadows with dominating sedges and forbs on non-calcareous soils of temperate Europe and high-altitudes of the Mediterranean

- |   |           |
|---|-----------|
| <i>Caricetum goodenowii</i> Braun 1915                                    | 15CA01 6  |
| <i>Eriophoretum scheuchzeri</i> Rübél 1912                                | 15CA02 1  |
| Združbe s pripadnostjo razredu  |           |
| Other communities of the class  |           |
| <i>Carex hostiana</i> -[ <i>Scheuchzerio-Caricetea nigrae</i> ]           | 15XX01 6  |
| <i>Carex panicea</i> -[ <i>Scheuchzerio-Caricetea nigrae</i> ]            | 15XX02 5  |
| <i>Eriophorum angustifolium</i> -[ <i>Scheuchzerio-Caricetea nigrae</i> ] | 15XX03 15 |
| <i>Potentilla palustris</i> -[ <i>Scheuchzerio-Caricetea nigrae</i> ]     | 15XX04 9  |

**Oxycocco-Sphagneteta Br.-Bl. & R. Tx. ex Westhoff et al. 1946**

Holarктиčna ombrotrofna barja in mokre resave na kisljih tleh

Holarctic ombrotrophic bogs and wet heathlands on acidic soils

**Sphagnetalia medii Kästner & Flöbner 1933**

Barjanske in oligotrofne združbe na višjih nadmorskih višinah in večjih geografskih širinah Evrazije

Bog and oligotrophic fen communities of higher altitudes and high latitudes of Eurasia



<b><i>Sphagnion medii</i> Kästner &amp; Flössner 1933</b>	16AA	
Barja subcelinskih in gorskih območij od montanskega pasu do sredozemskega in borealnega območja Evrazije		
Bogs of sub-continental and montane regions from the mountain belt spanning the mediterranean and boreal regions of Eurasia		
<i>Carici rostratae-Sphagnetum</i> Martinčič & Piskernik ex Martinčič & Seliškar 2004	16AA01	38
<i>Piceo-Sphagnetum flexuosi</i> Kutnar & Martinčič 2002	16AA02	24
<i>Calluno-Sphagnetum</i> Martinčič 1987 corr. 2002	16AA03	31
<i>Rhynchosporo albae-Sphagnetum tenelli</i> Martinčič & Piskernik 1985 nom. nud.	16AA04	25
<i>Eriophoro-Trichophoretum cespitosi</i> (Zlatnik 1928, Rudolph et al. 1928) Rübhel 1933	16AA05	34
<i>Carici limosae-Sphagnetum</i> Martinčič 1997	16AA06	62
(syn. <i>Sphagno-Caricetum limosae</i> Martinčič & Piskernik 1985)		
<i>Sphagno-Pinetum mugo</i> (Kästner & Flössner 1933) Kuoch 1954 corr. Zupancič & Žagar 2007	16AA07	27
<i>Rhynchosporo albae-Sphagnetum tenelli</i> Martinčič & Piskernik 1978	16AA08	28
<i>Eriophoro vaginati-Sphagnetum papilloso</i> Martinčič & Piskernik 1978	16AA09	39
<i>Eriophoro vaginati-Sphagnetum magellanicum</i> Martinčič & Piskernik 1985 nom. nud.	16AA10	30
<i>Calluno vulgaris-Sphagnetum fuscum</i> Martinčič & Piskernik 1985 nom. nud.	16AA11	30
<i>Pino mugii-Sphagnetum fuscum</i> Martinčič & Piskernik 1978	16AA12	30
<i>Pino mugii-Sphagnetum russowii</i> Martinčič & Piskernik 1978	16AA13	29
<i>Pino mugii-Sphagnetum girgensohnii</i> Martinčič & Piskernik 1978	16AA14	16
<i>Pino mugii-Dicranetum polyseti</i> Martinčič & Piskernik 1978	16AA15	8
<i>Pino mugii-Vaccinietum uliginosum</i> Martinčič & Piskernik 1978	16AA16	7
<i>Sphagnetum cuspidatum</i> comm.	16AA17	6
(syn. <i>Sphagnetum cuspidatum</i> Martinčič 1992 nom. nud.)		
<b><i>Oxyocco microcarpi-Empetrium hermaphroditum Nordhagen ex Du Rietz 1954</i></b>	16AB	
Barja borealnega in delno arktičnega območja ter subalpinskega pasu v zmernih predelih Evrope		
Bogs of boreal and partly arctic regions and subalpine alpine belts in the temperate region of Eurasia		
<i>Empetro hermaphroditum fuscum</i> Du Rietz. (1921) 1926	16AB01	unpubl. (Martinčič)
<b>VEGETACIJA SKALNIH RAZPOK, MELIŠČ IN BALVANOV</b>		
Vegetation of rock crevices, screes and boulder-fields		
<b><i>Asplenietea trichomanis</i> (Br.-Bl. in Meier &amp; Br.-Bl. 1934) Oberd. 1977</b>	17	
Vegetacija razpok in skalnih klifov in zidov Evrope, Severne Amerike, Srednjega Vzhoda, Arktičnih otokov in Grenlandije		
Vegetation of crevices and surface of rocky cliffs and walls of Europe, North Africa, Arctic islands and Greenland		
<b><i>Androsacetalia vandellii</i> Br.-Bl. in Meier &amp; Br.-Bl. 1934 nom. corr.</b>	17A	
Vegetacija silikatnih skal in razpok od zmernega do arktičnega pasu in na višjih nadmorskih višinah v Sredozemlju		
Crevice vegetation of siliceous rocks of temperate to arctic zones and at high altitudes of the Mediterranean		
<b><i>Androsacetion vandellii</i> Br.-Bl. in Br.-Bl. et Jenny 1926 nom. corr.</b>	17AA	
Nesktenjena vegetacija na silikatnih skalah v alpinskem in nivalnem pasu v gorovjih srednje Evrope		

Open vegetation of siliceous rocks in the alpine and nival belts of the Central European mountains	17AA01	16
<i>Campanulo-Primuletum villosae</i> Juvan et al. 2011	17B	
<b>Potentilletalia caulescentis Br.-Bl. in Br.-Bl. et Jenny 1926</b>		
Vegetacija apneniških skal in razpok na višjih nadmorskih višinah v območju mešanih in iglastih gozdov ter v arktičnem pasu gorovij Evrope		
Vegetation of sunny calcareous rock faces and crevices at high altitudes of the nemoral, boreal and arctic mountains of Europe		
<b>Phyteumato-Saxifragion petraeae Mucina in Mucina et al. 2011</b>	17BA	3
Vegetacija apneniških skal in razpok v subalpskem in alpskem pasu južnih Alp (v Sloveniji tudi montanski pas)	17BA01	38
Vegetation of calcareous rock faces and crevices of the subalpine and alpine belts of the Southern Alps	17BA02	73
<i>Potentilletum caulescentis</i> Aichinger 1933	17BA03	48
<i>Potentillo clusianae-Campanuletum zoysii</i> Aichinger 1933	17BA04	23
<i>Potentilletum nitidae</i> Wikus 1959	17BA05	15
<i>Paederoto-Minuartietum rupestris</i> T. Wraber 1986	17BA06	25
<i>Saxifragetum squarroso-crustatae</i> Surina 2005	17BA07	12
<i>Saxifragetum squarroso-crustatae</i> Surina 2005	17BA08	88
<i>Primulo carniolicae-Potentilletum caulescentis</i> Dakskobler ex Dakskobler 2000	17BA09	15
<i>Phyteumato columnae-Moehringietum villosae</i> Dakskobler 2000	17BA10	1
<i>Campanulo carnicae-Moehringietum villosae</i> Dakskobler 2000	17BA11	15
<i>Phyteumato-Potentilletum caulescentis</i> Poldini 1978	17BA12	10
<i>Edrantho graminifoliae-Potentilletum caulescentis</i> Accetto 2008	17BA13	11
<i>Seslerio calcariae-Saxifragetum paniculatae</i> Accetto 2004	17BA14	1
<i>Seslerio kalnikensis-Arabidetum muralis</i> Accetto 2008	17BA15	28
<i>Heliospermetum iskense</i> Accetto 2007	17BA16	1
<i>Heliospermetum malyi</i> Accetto 2007	17BA17	15
<i>Primuletum carniolicae</i> Accetto 2008	17BA18	9
<i>Potentillo caulescentis-Ostryetum carpiniifoliae</i> Franz 2002 nom. nud.	17BA19	1
<i>Arabido alpinae-Saxifragetum petraeae</i> Accetto 2006	17BB	
<i>Jovibarbo hirtae-Saxifragetum crustatae</i> Accetto 2006		
<i>Seslerio kalnikensis-Arabidetum scopolianae</i> Accetto 1996 nom. inval.		
<b>Micromerion croaticae Horvat et al. 1974</b>		
Vegetacija apnenčastih skal in razpok v subalpskem pasu v severozahodnih Dinaridih		
Vegetation of calcareous rock faces and crevices of subalpine belt of the northwestern Dinarides		
<i>Asplenietum fissi</i> Horvat 1931	17BB01	unpubl. (Surina et al. 2004)
<b>Violo biflorae-Cystopteridetalia alpinae Fernandez Casas 1970</b>	17C	
Vegetacija senčnih apnenčastih skal in skalnih razpok na višjih nadmorskih višinah v gorovjih na območju mešanih in iglastih gozdov ter arktični regiji		
Vegetation of shady calcareous rock faces and crevices at high altitudes of the nemoral, boreal and arctic mountains of Europe		
<b>Violo biflorae-Cystopteridion alpinae Fernandez Casas 1970</b>	17CA	
(syn. <i>Cystopteridion fragilis</i> Richard 1972, <i>Ctenidio-Polypodium interjecti</i> Brullo et al. 2001)		
Vegetacija zasenčenih apnenčastih skal in razpok v zmernem in borealnem pasu Evrope, arktičnih otokov in Grenlandije		
Vegetation of shaded calcareous rock faces and crevices of temperate and boreal Europe, Arctic islands and Greenland		
<i>Valeriano elongatae-Asplenietum viridis</i> Wikus 1959	17CA01	8
<i>Ranunculo traunfellneri-Paederotetum luteae</i> Surina 2005	17CA02	11

<i>Neckero crispae-Campanuletum justinianae</i> Accetto 1995	17CA03	56
<i>Neckero crispae-Polypodium interjecti</i> Poldini & Tacchi 2009	17CA04	4
<i>Trisetto argentei-Leontodontetum brumatii</i> Daksobler et al. 2012	17CA05	13
<i>Moehringio-Pseudofumarietum albae</i> Horvat 1962 nom. nud.	17CA06	unpubl. (Čarni)
<b>Onosmetalia frutescens Quézel 1964</b>	17D	
Termo-mezosredemska hazmofitska vegetacija apnenčastih klifov v Jadranski in Ionski obalni regiji		
Thermo-mesomediterranean chasmophytic vegetation of limestone cliffs of the Adriatic and Ionian coastal regions		
<b>Centaureo-Campanulion Horvatić 1934</b>	17DA	
Termofilna hazmofitska vegetacija apneniških skalnih razpok ob severnojadranski obali		
Thermophilous chasmophytic vegetation of limestone crevices of the northern Adriatic coasts		
<i>Asplenio lepidi-Moehringietum tommasinii</i> Martini 1990	17DA01	9
<i>Campanulo-Centaureetum kartischianae</i> Lausi & Poldini 1962	17DA02	1
<b>Parietarietalia (Rivas-Mart. 1960) Rivas Goday 1964</b>	17E	
Termofilna vegetacija zidov v južni in južnem delu srednje Evrope, Srednjega Vzhoda in severne Afrike		
Thermophytic vegetation of walls in southern and south-central Europe, the Middle East and North Africa		
<b>Cymbalario-Asplenion quadrivalentis Segal 1969</b>	17EA	
Vegetacija, bogata s praprotni, v razpokah osonečenih zidov v območjih tople in hladne klime Evrope		
Fern-rich vegetation of crevices of sunny walls of regions of warm- and cool-temperate climate regions of Europe		
<i>Asplenietium ruta-murariae-trichomanis</i> Kuhn 1937	17EA01	13
<i>Cymbalarietum muralis</i> Görs 1966	17EA02	10
<i>Corydalietum luteae</i> Kaiser 1926	17EA03	unpubl. (Šilc)
<b>Parietario judaicae-Centranthion rubri Rivas-Mart. 1960</b>	17EB	
Zeliščna vegetacija zidov v (sub)mediteranski in atlantski regiji Evrope		
Herbaceous vegetation of walls in (sub)mediterranean and atlantic regions of Europe		
<i>Cymbalario muralis-Parietarium judaicae</i> Pignatti 1952	17EB01	unpubl. (Šilc)
<b>Asplenietalia septentrionalis Oberd. et al. 1967</b>	17F	
Vegetacija skalnih razpok na silikatnih skalah v nižinah v zmernem in borealnem pasu Evrope		
Crevice vegetation of siliceous rocks at low altitudes of temperate and boreal Europe		
<b>Asplenion septentrionalis Gams ex Oberd. 1938</b>	17FA	
Vegetacija silikatnih skalnih razpok, bogata s praprotnicami, v zmernem in borealnem pasu Evrope		
Fern-rich vegetation of siliceous rock crevices of the temperate and boreal Europe		
<i>Woodstio ilvensis-Asplenietium septentrionalis</i> Br.-Bl. ex R. Tx. 1937	17FA01	46
<b>Hypno-Polypodium vulgaris Mucina 1993</b>	17FB	
Vegetacija silikatnih zasenečenih skalnatih razpok, bogata s praprotnicami, v kolinskem in submontanskem pasu srednje Evrope		
Fern-rich vegetation of siliceous shaded rock crevices of the the colline to sub-montane belts of Central Europe		
<i>Asplenio trichomanis-Polypodium vulgare</i> Firbas 1924	17FB01	44
(syn. <i>Hypno-Polypodium</i> Jurko & Pecar 1963)		
Združba s pripadnostjo razredu		
Other community of the class		
<i>Asplenium seelosii</i> -[ <i>Asplenietea trichomanis</i> ]	17XX01	4

**Adiantetea Br.-Bl. 1948**

Naskalne združbe, bogate s praprotni, na rastiščih, kjer škropi voda v Sredozemlju, na Atlantskih otokih, severni Afriki in Srednjem Vzhodu  
 Fern-rich chasmophytic communities of water-splashed habitats of the Mediterranean, Atlantic islands, North Africa and Middle East

**Adiantetalia capilli-veneris Br.-Bl. ex Horvatić 1934**

Naskalne združbe, bogate s praprotni, na rastiščih, kjer škropi voda v Sredozemlju, na Atlantskih otokih, Severni Afriki in Srednjem Vzhodu  
 Fern-rich chasmophytic communities of water-splashed habitats of the Mediterranean, Atlantic islands, North Africa and Middle East

**Adiantion Br.-Bl. ex Horvatić 1934**

Naskalne združbe, bogate s praprotni, na rastiščih, kjer škropi voda v Sredozemlju, na Atlantskih otokih, Severni Afriki in Srednjem Vzhodu  
 Fern-rich chasmophytic communities of water-splashed habitats of the Mediterranean, North Africa and Middle East

*Eucladietum verticillati* Allorge ex Braun 1968

*Phyllideto-Plagiochiletum cavernarum* Tomažič 1946

*Eucladio-Adiantetum* Br.-Bl. 1931

18

18A

18AA

18AA01

18AA02

18AA03 unpubl. (Dakskobler)

**Thlaspietea rotundifoliae Br.-Bl. 1948**

Vegetacija melišč in prodišč v zmernem, borealnem in oromediteranskem pasu Evrope in Arktičnih otokov

Vegetation of scree habitats and pebble alluvia of the temperate, boreal and and oromediteranean Europe and of the Arctic islands

**Thlaspietalia rotundifolii Br.-Bl. in Br.-Bl. & Jenny 1926**

Alpinske in subalpinske meliščne združbe na apnencu

Alpine and sub-alpine calcareous scree communities

**Thlaspion rotundifolii Jenny-Lips 1930**

Vegetacija apnenčastih melišč subalpinskega in alpinskega pasu v Alpah

Vegetation of calcareous screes of subalpine and alpine belts of the Alps

*Papaveri kerneri-Thlaspietum kerneri* T. Wraber 1970

*Leontodontetum montani* Jenny-Lips 1930

*Saxifragetum hohenwartii* Aichinger 1933

*Doronicetum grandiflorae* Jenny-Lips 1930

*Papaveri julici-Thlaspietum rotundifolii* T. Wraber 1970

*Campanulo cespitosae-Globularietum cordifoliae* Accetto 2006

**Arabido alpinae-Petasitetalia paradoxo Mucina et al. 2012**

Vegetacija vlažnih apnenčastih melišč in balvanskih polj v montanskem in subalpinskem pasu v območju mešanih gozdov v gorstvih Evrope

Vegetation of calcareous humid screes and boulder fields of the montane to subalpine belts of the nemoral mountain ranges of Europe

**Petasition paradoxo Zollitsch ex Lippert 1966**

Vegetacija vlažnih apnenčastih sotesk in montanskih melišč v montanskem in subalpinskem pasu Alp

Vegetation of humid calcareous fine-grained screes of the montane and subalpine belts of the Alps

*Petasiteum nivei* Beger 1922

(syn. *Arabidi pauciflorae-Petasitetum paradoxo* T. Wraber 1966, *Asplenio fissi-Petasitetum paradoxo* T. Wraber 1966)

*Festucetum laxae* (Aichinger 1933) T. Wraber 1970

*Dryopteridetum villarii* Jenny-Lips 1930

*Moerhingo-Gymnocarpietum robertiani* Lippert 1966

*Aconito-Adenostyletum glabrae* Surina 2005

<i>Astrantio carniolicae-Adenostyletum glabrae</i> Dakskobler 2008	19BA06	21
<i>Athamantho cretensis-Trisetetum argentei</i> Poldini & Martini 1993	19BA07	unpubl. (Dakskobler 2005)
<b>Arabidetalia caeruleae Rübél ex Br.-Bl. 1948</b>	19C	
Vegetacija snežnih dolinica na ustaljenih apnenčastih meliščih v alpinsko-subnivalnem pasu v gorovjih Evrope		
Vegetation of snow-beds on stabilised calcareous screes of alpine-subnival belts of European mountains		
<b>Arabidition caeruleae Br.-Bl. in Br.-Bl. &amp; Jenny 1926</b>	19CA	
Vegetacija snežnih dolinic na stabilnih apnenčastih meliščih v srednji in južni Evropi		
Vegetation of snow-beds on stabilised calcareous screes of alpine-subnival belts of European mountains		
<i>Homogyno discoloris-Salicetum retusae</i> Aichinger 1933	19CA01	27
<i>Potentillo dubiae-Homogynetum discoloris</i> Aichinger 1933	19CA02	11
<i>Saxifragetum stellaro-sedoidis</i> Englisch 1999	19CA03	6
<i>Salici retusae-Geranietum argentei</i> Surina 2005	19CA04	22
<i>Saxifrago sedoidis-Arabidetum caeruleae</i> T. Wraber 1972 nom. ined.	19CA05	13
<i>Festuco violaceae-Rumicetum nivalis</i> T. Wraber 1972 nom. ined.	19CA06	15
<i>Drepanocladum uncinati-Heliospermetum pusillae</i> Surina & Vreš 2004	19CA07	33
<i>Salix alpina</i> comm.	19CA08	3
	19D	
<b>Epilobietalia fleischeri Moor 1958</b>		
Vegetacija montansko-subalpskih rečnih prodnatih teras v območju mešanih in iglastih gozdov v gorstvih Evrope in Kavkaza		
Vegetation of montane-subalpine riverine gravel terraces of the nemoral-boreal European mountain ranges and Caucasus		
<b>Salicion incanae Aichinger 1933</b>	19DA	
Vegetacija montansko-subalpskih rečnih prodnatih teras v Alpah in Karpatih		
Vegetation of montane-subalpine riverine gravel terraces of the Alps and the Carpathians		
<i>Leontodonti berinii-Chondrillietum</i> T. Wraber 1955	19DA01	5
<i>Epilobio-Scrophularietum caninae</i> W. Koch & Br.-Bl. ex T. Müller 1974	19DA02	13
	19E	
<b>Galio-Parietarialia officinalis Boşcaiu et al. 1966</b>		
Toplojubne združbe apnenčastih melišč od kolinskega do montanskega pasu srednje in jugovzhodne Evrope		
Thermophilous calcareous scree communities of colline to montane belts of Central and south-east Europe		
<b>Stipion calamagrostis Jenny-Lips ex Br.-Bl. 1948</b>	19EA	
Toplojubne združbe apnenčastih melišč srednje in zahodne Evrope		
Vegetation of thermophilous communities of calcareous screes of Central and Western Europe		
<i>Rumicetum scutati</i> Kuhn 1937	19EA01	2
<i>Vincetoxicetum hircundinariae</i> Kaiser 1926	19EA02	1
<i>Arabido turritae-Auriniyetum petraeae</i> Dakskobler 2007	19EA03	21
<i>Stipetum calamagrostis</i> Br.-Bl. 1918	19EA04	unpubl. (Dakskobler 2005)
<i>Galopsietum angustifoliae</i> (Büker 1942) Bornkamm 1960	19EA05	unpubl. (Šilc)
<i>Silene glareosa</i> comm.	19EA06	5
	19G	
<b>Violetalia calaminiariae Br.-Bl. &amp; R. Tx. ex Ernst 1965</b>	19GA	
Na težke kovine prilagojene trate na rudarski jalovini v Evropi		
Swards of heavy-metal tolerant vegetation on mining spoil heaps of Europe		
<b>Thlaspion calaminiariae Ernst 1965</b>		

Na težke kovine odporne trate na rudarski jalovini v severozahodni Evropi (in tudi v Sloveniji)			
Swards of heavy-metal tolerant vegetation on mining spoil heaps of north-western Europe			
<i>Thlaspietum cepaeifolii</i> Ernst 1964	19GA01	4	
Združba s pripadnostjo razredu			
Other community of the class			
<i>Petasites paradoxus</i> -[ <i>Thlaspieteta rotundifolii</i> ]	19XX01	23	
<b><i>Drypetea spinosae</i> Quézel 1964</b>	20		
Termofilna vegetacija na meliščih in prodiščih v srednjem in vzhodnem Sredozemlju			
Vegetation of thermophilous sree habitats and pebble alluvia of the Central and Eastern Mediterranean			
<b><i>Arabidetalia flavescens</i> Lakušić 1968</b>	20A		
Vegetacija termofilnih melišč in prodišč v srednjem in vzhodnem Sredozemlju			
Vegetation of thermophilous sree habitats and pebble alluvia of the Central and Eastern Mediterranean			
<b><i>Peltarion alliaceae</i> Horvatić 1958</b>	20AA		
Meliščna vegetacija na apnencu v submontanskem in montanskem pasu na srednjem Balkanu			
Limestone sree vegetation of the submontane to montane belts of the central Balkans			
<i>Festuco carniolicae</i> - <i>Drypidetum jacquinianae</i> Poldini 1978	20AA01	20	
<i>Allio globosi</i> - <i>Iberidetum intermediae</i> Poldini 1980	20AA02	1	
<b><i>Loiseleurio-Vaccinietea</i> Egler ex Schubert 1960</b>	21		
Arktično-borealna grmišča tundre in (sub)alpinska pritikava grmišča Evrazije in Severne Amerike			
Arctic-boreal tundra scrub and (sub)alpine dwarf scrub of Eurasia and North America			
<b><i>Rhododendro-Vaccinietalia</i> Br.-Bl. in Br.-Bl. &amp; Jenny 1926</b>	21A		
Arktično-borealna grmišča tundre in (sub)alpinske pritikave grmičaste resave Evrazije in Severne Amerike			
Arctic-boreal tundra scrub and (sub)alpine acidophilous dwarf heath of Eurasia and North America			
<b><i>Loiseleurio-Vaccinion</i> Br.-Bl. in Br.-Bl. et Jenny 1926</b>	21AA		
Erikoidna pritikava grmišča na vetrovnih rastiščih na silikatih v subalpinskem in alpinskem pasu gorovij srednje Evrope (v Sloveniji tudi na karbonatu)			
Ericoid dwarf scrub of wind-exposed habitats on siliceous substrates of subalpine and alpine belts of the Central European mountains			
<i>Empetro-Vaccinietum gaultherioidis</i> Br.-Bl. in Br.-Bl. & Jenny 1926 corr. Grabherr 1993	21AA01	3	
<b><i>Juncetea trifidi</i> Hadač in Klika &amp; Hadač 1944</b>	22	22 1	
Alpinski kisloljubni travniki Srednje Evrope in Balkana in arktične in boreo-arktčne trate eline			
Alpine acidophilous grasslands of Central European and Balkan mountains and Arctic and boreo-arctic rush swards			
<b><i>Festucetalia spadiceae</i> Barbero 1970</b>	22A		
Alpinski kisloljubni vrstno bogati travniki v Alpah, Karpatih in Apeninih			
Alpine acidophilous species-rich grasslands of the Alps, Carpathians, Apennines			
<b><i>Nardion strictae</i> Br.-Bl. 1926</b>	22AA		
Travnate ruže z volkom, kjer dolgo obleži sneg, v subalpinskem in alpinskem pasu Alp, Karpatov in severnih Apeninov			
Matt-grass chionophilous swards of the subalpine and alpine belts of the Alps, Carpathians and Northern Apennines			
<i>Sieversio-Nardetum strictae</i> Lüdi 1948	22AA01		unpubl. (Datskobler)

## VEGETACIJA ARKTIČNE, BOREALNE IN ALPINSKE CONE

### Vegetation of arctic, boreal and alpine zones

#### VEGETACIJA MONTANSKIH ZELIŠČ, TRAVIŠČ, GOLIČAV (POSEK) IN SNEŽNIH DOLINIC

#### Vegetation of montane herblands, grassland, fell-fields and snow-beds

##### **Mulgedio-Aconitetea Hadač & Klika in Klika & Hadač 1944**

Grmišča in visoka steblikovja na rastiščih, ki jih vlaži in gnoji mezeča voda, na visokih nadmorskih višinah v celinskem delu Evrope in na Grenlandiji  
Scrub and tall-herb vegetation in habitats moistened and fertilised by percolating water at high altitudes of continental Europe and in Greenland

23

##### **Calamagrostietalia villosae Pawłowski et al. 1928**

Visoka steblikovja in združbe bogate s praprotnicami na kislil do izpranih karbonatnih tleh v Alpah, Karpatih in Hercinskem hribovju  
Tall-herb and fern-rich communities on acidic to leached carbonate soils of the Alps, Carpathians and Hercynian mountains

23A

##### **Calamagrostion arundinaceae (Luquet 1926) Oberdorfer 1957**

Travišča vrstno bogata s steblikami na suhih kislilnih tleh v zgornjem montanskem in subalpskem pasu zahodne in srednje Evrope  
(v Sloveniji tudi na bolj nevtralnih tleh)

23AA

Tall herb species-rich grasslands on dry acidic soils of the upper montane and subalpine belts of Western and Central Europe

23AA01 10

*Festuco calvae-Stemmacanthetum rhaponticae* Dakskobler 2008

*Trollio europeae-Aconitetum ranunculifolii* Dakskobler 2008

*Laserpitio sileri-Grafitetum golaekae* Poldini in Dakskobler & Poldini 2012

23AA02 10

23AA03 unpubl. (Dakskobler)

23B

**Adenostyletalia alliariae Br.-Bl. 1930**  
Visoka steblikovja in grmišča na rodovitnih tleh na visokih nadmorskih višinah v zmernem in sredozemskem delu Evrope

Tall-herb and scrub communities on fertile soils at high altitudes of temperate and mediterranean Europe

23BA

##### **Adenostylien alliariae Br.-Bl. 1926**

Visoka steblikovja na silikatnih substratih gorovij v območju mešanih gozdov v Evropi (v Sloveniji tudi na karbonatu)

23BA01 5

23BA02 33

23BA03 5

23BA04 13

23BA05 27

23BC

**Delphinion elati Hadač ex Hadač et al. 1969**

Submontanska do subalpska visoka steblikovja na apnencu v Karpatih in Alpah  
Sub-montane to subalpine calcicolous tall-herb communities of the Carpathians and Alps

*Aegopodio-Anthriscetum nitidi* Kopecký 1974 nom. invers. propos.

*Geranio phaei-Urticetum dioicae* Hadač 1968

**Senecionio rupestris-Rumicetalia alpini Mucina in Mucina et al. 2011**

Subalpske nitrofilne ruderalne združbe Evrope in Kavkaza

Subalpine nitrophilous ruderal communities of Europe and the Caucasus

23BC01 unpubl. (Čarni)

23BC02 unpubl. (Čarni)

23C

<b>Rumicion alpini Rübél ex Scharfetter 1938</b>	23CA	
Subalpinske nitrofilne ruderalne združbe Evrope		
Subalpine nitrophilous ruderal communities of Europe		
<i>Rumicetum alpini</i> Beger 1922	23CA01	10
<i>Trollio europaei-Deschampsietum cespitosae</i> Horvat ex T. Wraber 2007	23CA02	8
<b>Petasio-Chaerophylletalia Morarii 1967</b>	23D	
Nitrofilna vegetacija visokih steblikovij ob gorskih potokih v srednji Evropi, na Balkanu in Apeninih		
Nitrophilous tall-herb vegetation of mountain streamsides of Central Europe, Balkans and the Apennines		
<b>Petasion officinalis Sillinger 1933</b>	23DA	
Visoka steblikovja na surovih nanešenih tleh ob gorskih potokih na Karpatih in v Hercinskem gorovju		
Tall-herb vegetation of raw alluvium soils on montane stream banks of the Carpathians and Hercynicum		
<i>Chaerophylo-Petasitetum officinalis</i> Kaiser 1926	23DA01	21
<i>Scopolio carniolicae-Petasitetum albi</i> Dakskobler 2008 nom. inval.	23DA02	4
<i>Arunco-Petasitetum albi</i> Br.-Bl. & Sutter 1977	23DA03	unpubl. (Dakskobler 2005)
<b>Salicetea herbaceae Br.-Bl. 1948</b>	24	
Arktična in alpinsko-subnivalna vegetacija snežnih dolinic in pobočij v Evraziji in Grenlandiji, kjer dolgo obleži sneg in so tla namočena s talečim se snegom		
Arctic and alpine-subnival vegetation of long-lasting snow-beds and slopes irrigated by melt waters of mountains of Eurasia and Greenland		
<b>Salicetalia herbaceae Br.-Bl. in Br.-Bl. et Jenny 1926</b>	24A	
Arktična in alpinsko-subnivalna vegetacija snežnih dolinic in pobočij v Evraziji in Grenlandiji, kjer dolgo obleži sneg in so tla namočena s talečim se snegom		
Arctic and alpine-subnival vegetation of long-lasting snow-beds and slopes irrigated by melt waters of mountains of Eurasia and Greenland		
<b>Salicion herbaceae Br.-Bl. in Br.-Bl. et Jenny 1926</b>	24AA	
Združbe snežnih dolinic na silikatnih substratih v alpskem in nivalnem pasu gorovij v območju mešanih gozdov Evrope		
Snow-bed communities on siliceous substrates of alpine and nival belts of mountains of nemoral zone of Europe		
<i>Salicetum herbaceae</i> Rübél 1911	24AA01	1
<b>Elyno-Seslerietea Br.-Bl. 1948</b>	25	8
Alpinske in subalpinske trate na apnencu v gorovjih na območju mešanih gozdov		
Alpine and subalpine calcareous swards of nemoral mountain ranges		
<b>Seslerietalia coeruleae Br.-Bl. in Br.-Bl. et Jenny 1926</b>	25A	
Alpinska in subalpinska travišča na apnencu na območjih mešanih gozdov v gorovjih Evrope		
Alpine and sub-alpine calcareous grasslands of the European nemoral mountain ranges		
<b>Caricion firmae Gams 1936</b>	25AA	
Trate šašev na vetrovnih rastiščih v alpskem pasu Alp in Karpatov		
Wind-exposed calcareous sedge swards in the alpine belt of the Alps and Carpathians		
<i>Gentiano terglouensis-Caricetum firmae</i> T. Wraber 1970	25AA01	46
<i>Caricetum mucronatae</i> (Br.-Bl. in Br.-Bl. & Jenny 1926) Thomaser 1977	25AA02	26
<i>Dryadetum octopetalae</i> Rübél 1911	25AA03	6
<i>Primulo carniolicae-Caricetum firmae</i> Dakskobler 2006	25AA04	22



<b>Seslerion albicantis Br.-Bl. in Br.-Bl. et Jenny 1926 corr. Oberd. 1983</b>	25AB	
Zgornje montanske do subalpinske subkserofilne trate vilovine v Alpah		
Supramontane to alpine calcareous sub-xerophilous blue-grass swards of the Alps		
<i>Koelerio-Festucetum amethystinae</i> Horvat ex Horvat et al. 1974	25AB01	5
<b>Caricion austroalpinae Sutter 1962</b>	25AC	
Zgornje montanska do alpinska subkserofilna travišča na apnencu v južnem obrobju vzhodnih Alp		
Supramontane to alpine calcareous sub-xerophilous grasslands of the southern margins of the Eastern Alps		
<i>Ranunculo hybridi-Caricetum sempervirentis</i> Poldini & Feoli Chiapella in Feoli Chiapella & Poldini 1993	25AC01	25
<i>Avenastro parlatorei-Festucetum calvae</i> (Aichinger 1933 corr. Franz 1980) Poldini & Feoli Chiapella in Feoli Chiapella & Poldini 1993	25AC02	16
<i>Centaureo julici-Laserpitietum sileris</i> Dakskobler in Dakskobler & Poldini 2012	25AC03	56
<i>Primulo carniolicae-Seslerietum calcariae</i> Dakskobler 2006	25AC04	17
(syn. <i>Primulo carniolicae-Seslerietum albicantis</i> Dakskobler 2003 nom. prov.)		
<i>Primulo carniolicae-Caricetum sempervirentis</i> Accetto 2010	25AC05	1
<i>Carici sempervirentis-Seslerietum kalmikensis</i> Accetto 1995	25AC06	1
<i>Carici sempervirentis-Astrantietum majoris</i> Accetto 1999 nom. prov.	25AC07	1
<b>Caricion ferrugineae Br.-Bl. 1931</b>	25AD	
Zgornje montanska do alpinska mezohigrofilna travišča šašev na apnencu v Alpah in Karpatih		
Supramontane to alpine calcareous meso-hygrophilous sedge swards of the Alps and Carpathians		
<i>Caricetum ferrugineae</i> Lüdi 1921	25AD01	30
<i>Hyperico alpini-Caricetum ferrugineae</i> Horvat ex T. Wraber 1971	25AD02	9
<i>Saxifrago aizoidis-Caricetum ferrugineae</i> Dakskobler 1996	25AD03	9
<i>Carici ferrugineae-Eryngietum alpinae</i> Seljak ex Dakskobler et al. 2005	25AD04	24
<b>Seslerietalia tenuifoliae Horvat 1930</b>	25B	
Alpinska in subalpinska travišča s šopasto rušo na apnencu na severnem Balkanu in Apeninih		
Alpine and subalpine calcareous tussock grasslands of the northern Balkan Peninsula and the Apennines		
<b>Seslerion tenuifoliae Horvat 1930</b>	25BA	
Subalpinska in alpinska šopasta travišča tankolistne vilovine v ilirsko-dinarski regiji		
Subalpine and alpine calcareous tussock blue-grass grasslands of the Illyrian-Dinaric regions		
<i>Scabioso silenifoliae-Caricetum mucronatae</i> Surina & T. Wraber 2005	25BA01	20
<i>Scabioso silenifoliae-Dryadetum octopetalae</i> Surina 2005	25BA02	6
<i>Edraiantho graminifolii-Caricetum firmiae</i> Horvat (1930) 1934	25BA03	1
<i>Carici laevetis-Helianthemum alpestris</i> Horvat 1930	25BA04	unpubl. (Surina)
<i>Scabiosa silenifolia</i> comm.	25BA05	3
<b>Festucion pungentis Horvat 1930</b>	25BB	
Subalpinska travišča s šopasto rušo na apnencu na strmih terasastih pobočjih v severnih Dinaridih		
Subalpine calcareous tussock grasslands on steep terraced slopes of the North Dinarides		
<i>Festucetum pungentis</i> Horvat 1930	25BB01	3

## ANTROPOGENA VEGETACIJA Anthropogenic vegetation

- Bidentetea R. Tx. et al. ex von Rochow 1951** 26  
Poletna enoletna pionirska vegetacija na periodično poplavljenih bregovih vodnih teles  
Summer-annual, pioneer vegetation of periodically flooded edges of water bodies
- Bidentetalia Br.-Bl. et Tx. ex Klika & Hadač 1944** 26A  
Poletna enoletna pionirska vegetacija na periodično poplavljenih bregovih vodnih teles  
Summer-annual, nitrophytic pioneer vegetation of periodically flooded edges of water bodies
- Bidention tripartitae Nordhagen ex Klika et Hadač 1944** 26AA  
Poletna enoletna pionirska vegetacija na periodično poplavljenih bregovih potokov; mlak in ribnikov  
Summer-annual, nitrophytic pioneer vegetation of periodically flooded edges of streams and ponds
- Polygono lapathifolii-Bidentetum tripartitae* Klika 1935 26AA01 10  
*Bidenti-Polygonetum hydropiperis* Lohm. in R. Tx. 1950 nom. invers. propos. 26AA02 57  
*Rumicetum maritimi* Sissingh ex R. Tx. 1950 26AA03 3  
*Rumici-Cyperetum glomerati* Seliškar 1998 nom. nud. 26AA04 5  
*Calystegio-Salicetum purpureae* Petkovšek 1966 26AA05 10  
*Chenopodion rubri* (Tx. in Poli et J. Tx. 1960) Hilbig et Jäger 1972 26AB 26AB
- Poletna enoletna pionirska vegetacija na s hranili zelo bogatih in slanih ruderalnih rastiščih  
Summer-annual, pioneer vegetation of heavily nutrient-loaded and saline ruderal habitats
- Chenopodietum ficifolii* Hejny in Hejny et al. 1979 26AB01 3  
*Chenopodietum rubri* Timár 1947 26AB02 unpubl. (Šilc)
- Polygono-Poetea annuae Rivas-Mart. 1975** 27  
Subkozmodolitska vegetacija pritikavih zelišč na pohojenih rastiščih, bogata s terofiti  
Subcosmopolitan therophyte-rich dwarf-herb vegetation of trampled habitats
- Polygono arenastri-Poetalia annuae R. Tx. in Géhu et al. 1972 corr. Rivas-Mart. et al. 1991** 27A  
Subkozmodolitska vegetacija pritikavih zelišč na pohojenih rastiščih, bogata s terofiti  
Subcosmopolitan therophyte-rich dwarf-herb vegetation of trampled habitats
- Polygono-Coronopion Sissingh 1969** 27AA  
Z zelišči bogata vegetacija na pohojenih rastiščih v zmernem in borealnem pasu Evrope  
Herb-rich vegetation of trampled habitats of the temperate to boreal zones of Europe
- Matricario-Polygonetum arenastri* T. Müller in Oberd. 1971 27AA01 108  
*Poetea annuae* Felföldy 1942 27AA02 13  
*Poo-Coronopetum squamati* (Oberd. 1957) Gutte 1966 27AA03 15  
*Coronopoda procumbentis-Sclerochloëtum durae* Br.-Bl. ex Br.-Bl. et al. 1936 27AA04 1  
*Chamaesyce supinae-Polygonetum arenastri* (Timár 1950) Ubrisy 1974 corr. Borhidi 1996 27AA05 unpubl. (Šilc)  
*Polygonetum calcati* Lohm. 1975 27AA06 unpubl. (Šilc)

<b>Saginion procumbentis</b> R. Tx. et Ohba in Géhu et al. 1972	27AB	
Z zelišči bogata vegetacija močno pohojenih vlažnih in zasenčenih rastišč v Evropi		
Herb-rich vegetation of strongly trampled moist and shaded habitats of Europe		
<i>Sagino procumbentis</i> - <i>Bryetum argentei</i> Diemont et al. 1940	27AB01	2
<i>Hernarietum glabrae</i> (Hohenester 1960) Jehlík & Hejný 1975	27AB02	1
<b>Stellarietea mediae</b> R. Tx. et al. ex von Rochow 1951	28	
Enoletne plevelne združbe obdelanih njiv, vrtov in smetišč		
Annual weed communities of arable crops, gardens and waste places		
<b>Centaureetalia cyani</b> R. Tx. et al. ex von Rochow 1951	28A	
Plevelne združbe obdelanih tal na s karbonati bogatih tleh v zmernem pasu, stepski in subborealni coni Evrope		
Weed communities of arable crops on lime-rich soils in temperate, steppe and sub-boreal zones of Europe		
<b>Caucalidion lappulae</b> von Rochow 1951	28AA	
Plevelne združbe žit na z bazami bogatih tleh srednje Evrope		
Weed communities of cereal crops on base-rich soils in Central Europe		
<i>Kickxietum spuriae</i> Kruseman & Vlieger 1939		
<i>Galio tricornuti-Ranunculetum arvensis</i> Kaligarič 2001	28AA01	3
<b>Veronico-Euphorbion Sissingh ex Passarge 1964</b>	28AA02	42
Plevelna vegetacija vinogradov in vrtov na z bazami bogatih tleh v srednji in zahodni Evropi	28AB	
Weed vegetation of vineyards and gardens on base-rich soils of Central and Western Europe		
<i>Geranio rotundifolii-Allietum</i> R. Tx. ex von Rochow 1951	28AB01	21
<i>Veronicetum trilobae-triphyllidi</i> Slavnić 1951	28AB02	92
<i>Mercurialietum annuae</i> Kruseman & Vlieger 1939	28AB03	26
<b>Atriplici-Chenopodietalia albi</b> (R. Tx. 1937) Nordhagen 1950	28B	70
Plevelne združbe žit in drugih kulturnih rastlin ter vrtov na kisljih in s hranili siromašnih tleh		
Weed communities of cereal and other cultures and gardens on acidic and nutrient-poor soils		
<b>Scleranthion annui</b> (Kruseman et Vlieger 1939) Sissingh in Westhoff et al. 1946	28BA	
Plevelne združbe ozimnih žit na nevtralnih do kisljih glinastih in peščeno-glinastih tleh v zmernem pasu Evrope		
Weed communities of winter cereal cultures on neutral to acid loamy and sandy-loamy soils in temperate Europe		
<i>Trifolietum campestri-arvensis</i> Kutschera 1966	28BA01	3
<i>Aethuso-Galeopsietum</i> G. Müller 1964	28BA02	1
<i>Alchemillo-Matricarietum</i> R. Tx. 1937	28BA03	138
<i>Aphanes arvensis</i> comm.	28BA04	38
<b>Oxalidion europeae</b> Passarge 1978	28BB	
Evropske plevelne združbe obdelanih njiv na vlažnih glinastih tleh		
European weed communities of arable lands on moist loamy soils		
<i>Panico-Chenopodietum polyspermi</i> R. Tx. 1937	28BB01	158
<i>Hyoscyamo-Chenopodietum hybridi</i> Mucina in Mucina et al. 1993	28BB02	4
<i>Galeopsisido tertahit-Galinsogietum parviflorae</i> Poldini et al. 1998	28BB03	21

<b>Spergulo arvensis-Erodion cicutariae J. Tx. in Passarge 1964</b>	28BC	
Plevelne združbe okopavin in poletnih žit bogate s travami v zmernem pasu Evrope		
Weed communities of root crops and summer cereals dominated by graminoids in temperate Europe		
<i>Echinochloa-Setariaetum pumilae</i> Felföldy 1942 corr. Mucina 1993	28BC01	115
<i>Sorghum halepense</i> comm.	28BC02	1
	28C	
<b>Eragrostietalia J. Tx. ex Poli 1966</b>	28CA	
Toplojubna antropogena vegetacija, bogata s travami in C4 vrstami, na poletnih suhih rastiščih južne in jugovzhodne Evrope		
Thermophilous grass-rich anthropogenous vegetation rich in C4 species of summer-dry habitats of southern and south-eastern Europe		
<b>Salsolion ruthenicae Philippi 1971</b>		
Ruderalna vegetacija motenih prodnatih in peščenih tal v subkontinentalnih delih srednje Evrope		
Ruderal vegetation of disturbed gravelly and sandy soils of subcontinental regions of Central Europe		
<i>Panicetum capillaris</i> Mititelu & Roman 1988	28C0A1	3
<b>Eragrostio-Polygonion arenastri Couderc et Izco ex Čarni et Mucina 1998</b>	28CB	
Poletne suhe pohojene združbe na suhih peščenih tleh zahodne in srednje Evrope		
Summer-dry trampled plant communities on dry sandy soils of Western and Central Europe		
<i>Eragrostio-Polygonetum arenastri</i> Oberd. 1954 corr. Mucina 1993	28CB01	12
<i>Chamaesyco humifusae-Oxalidetum corniculatae</i> Forstner in Mucina 1993	28CB02	3
<i>Portulaco-Euphorbietum maculatae</i> (Brandes 1993) Čarni & Mucina 1998	28CB03	8
<i>Sonchus-Amaranthus deflexus</i> comm.	28CB04	3
	28CC	
<b>Eragrostion Tx. ex Oberd. 1954</b>	28CC01	1
Toplojubna plevelna vegetacija na peščenih tleh vzhodne in jugovzhodne Evrope	28CD	
Thermophilous weed vegetation on sandy soils of Eastern and south-eastern Europe		
<i>Portulacetum oleracei</i> Felföldy 1942		
<b>Polycarpo-Eleusinon indicæ Čarni &amp; Mucina 1998</b>		
Toplojubna vegetacija na pohojenih rastiščih severne Italije in Ilirske regije		
Thermophilous vegetation of trampled habitats of northern Italy and the Illyrian region		
<i>Polycarpo tetraphylli-Amaranthetum deflexi</i> Pignatti 1953	28CD01	7
<i>Eleusinatum indicæ</i> Pignatti 1953	28CD02	2
<i>Euphorbio-Oxalidetum corniculatae</i> Lorenzoni 1964	28CD03	1
Združbe na nivoju reda		
Other communities of the order		
<i>Cynodon dactylon</i> -[ <i>Eragrostietalia</i> ]	28CX01	8
<i>Digitaria sanguinalis</i> -[ <i>Eragrostietalia</i> ]	28CX02	unpubl. (Šilc)
<i>Carex hirta</i> -[ <i>Eragrostietalia</i> ]	28CX03	unpubl. (Šilc)
	28D	
<b>Sisymbrietalia J. Tx. ex Görs 1966</b>		
Plevelna vegetacija obdelanih njiv, vrtov in smetišč v območju mešanih gozdov in step Evrope		
Weed vegetation of arable crops, gardens and waste places of nemoral and steppe zones of Europe		
<b>Sisymbriion officinalis R. Tx. et al. ex von Rochow 1951</b>	28DA	
Eoletna ruderalna vegetacija, bogata s travami, na s hranili bogatih rastiščih v območjih zmernega pasu z milimi zimami vzhodne in srednje Evrope		
Grass-rich annual ruderal vegetation of nutrient-rich habitats of temperate winter-mild Western and Central Europe		

<i>Conyzo canadensis-Lactucetum serriolae</i> Lohm. in Oberd. 1957	28DA01	9
<i>Hordeetum murini</i> Libbert 1933	28DA02	29
<i>Linario-Brometum tectorum</i> Knapp 1961	28DA03	1
<i>Polygono arenastri-Lepidietum ruderale</i> Mucina in Mucina et al. 1993	28DA04	3
<i>Hordeo murini-Brometum sterilis</i> Lohm. ex von Rochow 1951 (syn. <i>Brometum sterilis</i> Görs 1966)	28DA05	1
<i>Parietaria judaica</i> comm. (sensu Poldini 1994)	28DA06	1
<i>Sisymbrium officinale</i> comm.	28DA07	unpubl. (Šilc)
<b>Malvion neglectae (Gutte 1972) Hejny 1978</b>	28DB	
Nitrofilna ruderalna vegetacija nizkoraslih zelišč na zmerno pohojenih rastiščih v zmernem pasu zahodne in srednje Evrope		
Nitrophilous ruderal vegetation of low-grown herbs in slightly trampled habitats of temperate Western and Central Europe		
<i>Hyoiscamo nigri-Malvetum neglectae</i> Aichinger 1933	28DB01	59
<i>Malvetum pusillae</i> Morariu 1943	28DB02	5
<i>Malvio neglectae-Chenopodietum vulvariae</i> Gutte 1972	28DB03	1
<i>Matricarietum discoideae-recutitae</i> Jarolimek et al. 1997	28DB04	2
Združba na nivoju reda		
Other community of the order		
<i>Tripleurospermum inodorum</i> -[ <i>Sisymbrietalia</i> ]	28DX01	1
<b>Chenopodietalia muralis Br.-Bl. in Br.-Bl. et al. 1936</b>	28E	
Ruderalna vegetacija bogata z zelišči na motenih, s hranili bogatih rastiščih v Sredozemlju in Makaroneziji		
Ruderal herb-rich vegetation on high-nutrient disturbed soils of the Mediterranean and the Macaronesia		
<b>Chenopion muralis Br.-Bl. in Br.-Bl. et al. 1936</b>	28EA	
Sredozemska nitrofilna ruderalna vegetacija, v kateri prevladujejo nizkorasla nesukulentna zelišča		
Mediterranean nutrient-loving ruderal vegetation dominated by low-grown non-succulent herbs		
<i>Hordeetum leporini</i> Br.-Bl. 1936	28EA01	4
Združba na nivoju razreda		
Other community of the class		
<i>Arrhenatherum elatius</i> -[ <i>Stellarietea mediae</i> ]	28XX01	5
<b>Artemisietea vulgaris Lohm. et al. ex von Rochow 1951</b>	29	
Trajne in z vrstami osata bogate, zmerno suhe ruderalne združbe zmerno in submediteranske regije Evrope		
Perennial and thistle-rich (sub)xerophilous ruderal vegetation of temperate and submediterranean regions of Europe	29A	
<b>Onopordetalia acanthii Br.-Bl. et Tx. ex Klika et Hadač 1944</b>		
Subkserofilne ruderalne združbe, v katerih prevladujejo kratkoživeče trajnice zmernega pasu Evrope		
Sub-xerophilous ruderal communities dominated by short-lived perennials of temperate Europe		
<b>Onopordion acanthii Br.-Bl. et al. 1936</b>	29AA	
Kseromezofilne ruderalne združbe, v katerih prevladujejo vrste osata, v subkontinentalni srednji Evropi in severnem Balkanu		
Thistle-dominated xero-mesophilous ruderal communities of subcontinental Central Europe and northern Balkans		
<i>Potentillo argenteae-Artemisietum absinthii</i> Faliński 1965	29AA01	1
<i>Carduo acanthoidis-Onopordetum acanthii</i> Soó ex Jarolimek et al. 1987	29AA02	unpubl. (Šilc)

(syn. <i>Onopordetum acanthii</i> Br.-Bl. et al. 1936)			
<b>Dauco-Melilotum Görs ex Rostański et Gutte 1971</b>	29AB		
Kseromezofilna ruderalna vegetacija, v kateri prevladujejo dvoletnice zmernege in subborealnega dela Evrope			
Xero-mesophilous ruderal vegetation dominated by biennial plants of temperate and sub-boreal Europe			
<i>Melilotum albo-officinale</i> Sissingh 1950	29AB01	65	
(syn. <i>Echium-Melilotetum</i> R. Tx. 1947, incl. <i>Melilotus alba-Melilotus officinalis</i> comm.)			
<i>Tanacetum-Artemisietum vulgaris</i> Sissingh 1950	29AB02	18	
<i>Dauco-Picridetum hieracioidis</i> Görs ex Seybold & T. Müller 1972	29AB03	33	
<i>Odonitto-Ambrosietum artemisiifoliae</i> Jarolimek et al. 1997	29AB04	28	
<i>Foeniculo-Artemisietum vulgaris</i> Poldimi 1980	29AB05	3	
<i>Dauco-Crepidetum rhoeadifoliae</i> Hejny & Grüll in Hejny et al. 1979	29AB06	unpubl. (Šilc)	
<i>Poo-Tussilaginetum farfarae</i> R. Tx. 1931	29AB07	unpubl. (Šilc)	
<i>Poëtum humili-compressae</i> Bornkamm 1961	29AB08	unpubl. (Šilc)	
Združbe na nivoju reda			
Other communities of the order			
<i>Equisetum arvense</i> -[ <i>Onopordetalia</i> ]	29AX01	3	
<i>Poa compressa</i> -[ <i>Onopordetalia</i> ]	29AX01	unpubl. (Šilc)	
<i>Erigeron annuus</i> -[ <i>Onopordetalia</i> ]	29AX01	unpubl. (Šilc)	
<i>Calamagrostis epigejos</i> -[ <i>Onopordetalia</i> ]	29AX01	unpubl. (Šilc)	
<b>Agropyretalia intermedio-repentis Oberd. et al. ex T. Müller et Görs 1969</b>	29B		
Antropogena ruderalna in motena subruderalna stepska travišča in zeliščne združbe hladnejših predelov zmernege pasu Evrope			
Anthropogenic ruderal and distributed semi-ruderal steppic grasslands and herblands of cool temperate Europe			
<b>Convolutio arvensis-Agropyron repentis Görs 1966</b>	29BA		
Antropogena pol ruderalna in ruderalna travišča zmernege pasu Evrope			
Anthropogenic semi-ruderal and ruderal grasslands of temperate Europe			
<i>Lepido drabae-Agropyretum repentis</i> T. Müller & Görs 1969	29BA01	8	
<i>Cynodonto-Sorghetum halepensis</i> (Laban 1975) Kojić 1979	29BA02	6	
<i>Brachypodio-Agropyretum intermedii</i> Poldimi 1980	29BA03	2	
<i>Diplotaxio tenuifoliae-Agropyretum repentis</i> Philippi in Th. Müller & Görs 1969	29BA04	unpubl. (Šilc)	
Združba na nivoju reda			
Other communities of the order			
<i>Elymus repens</i> -[ <i>Agropyretalia</i> ]	29BX01	30	
Združba na nivoju razreda			
Other community of the class			
<i>Coryza canadensis</i> -[ <i>Artemisietea</i> ]	29XX01	3	
	30	30	
<b>Galio-Urticetea Passarge ex Kopecký 1969</b>			
Z visokimi steblikami bogata polnaravna robna vegetacija s hranili bogatih robov gozdov in grmišč ter vodotokov Evrope			
Tall-herb semi-natural tall saum vegetation of nutrient-rich fringes of forests and scrub and of water courses of Europe			
<b>Arctio-Iappae-Artemisietalia vulgaris Dengler 2002</b>			
			30A

- Trajne ruderalne združbe, kjer prevladujejo kratkoživeče trajnice na vlažnejših tleh hladnejših predelov zmernega pasu Evrope  
 Perennial ruderal communities dominated by short-lived perennials on moister soils of cool temperate Europe
- Arction lappae R. Tx. 1937**  
 30AAA
- Trajne ruderalne združbe, kjer prevladujejo kratkoživeče trajnice na vlažnejših tleh hladnejših predelov zmernega pasu Evrope  
 Perennial ruderal communities dominated by short-lived perennials on moister soils in cooler climates of Europe
- 30AA01 61  
 30AA02 1  
 30AA03 42  
 30AA04 18  
 30AA05 2  
 30AA06 10  
 30B
- Arctio-Artemisietum vulgaris** Oberd. et al. ex Seybold & T. Müller 1972  
**Balloto-Malvetum sylvestris** Gutte 1966  
**Urtico urentis-Chenopodietum boni-henrici** R. Tx. 1937  
**Lamio-Ballotetum nigrae** Lohm. ex Seybold & T. Müller 1972  
**Lamio albi-Cornietum maculati** Oberd. 1957  
**Ballota nigra** ssp. *foetida* comm.
- Galio aparines-Alliarietalia** Oberd. in Görs et T. Müller 1969  
 Ruderalne in polnaravne združbe mezofilnih in nitrofilnih visokih trajnic  
 Ruderal and semi-natural communities of tall mesophilous and nitrophilous perennials
- Geo-Alliarion Lohmeyer et Oberd. in Görs et T. Müller 1969**  
 Nitrofilne združbe visokih steblik na toplih gozdnih in grmiščinih robovih v zmerni coni Evrope  
 Nitrophilous tall-herb communities of thermophilous forest and scrub margins in temperate zone of Europe
- Sambucetum ebuli** Felföldy 1942  
**Alliario-Chaerophylletum tenui** Lohm. 1949  
**Toridilletum japonicae** Lohm. ex Görs & T. Müller 1969  
**Urtico-Cruciatetum laevipedis** Dierschke 1974  
**Urtico-Parietarietum officinalis** Klotz 1985  
**Geo urbani-Chelidoniumetum maji** Jarolimek et al. 1997  
**Physalidetum alkekengi** Kaiser 1926  
**Ornithogalo pyrenaici-Oplismenietum undulatifolii** Dakskobler & Vreš 2009  
**Veronico sublobatae-Alliarietum petiolatae** Jarolimek et al. 1997  
**Geranium robertianum-Galium aparine** comm.  
**Impatiens parviflora** comm.
- Aegopodion podagrariae R. Tx. 1967**  
 Nitrofilne združbe visokih steblik mezofilnih robov in čistini (posek) gozdov in grmišč v zmerni in borealni coni Evrope  
 Nitrophilous tall-herb communities of mesic margins and clearings of forests and scrub in temperate and boreal zones of Europe
- Chaerophylletum aurei** Oberd. 1957  
**Aegopodio-Menthetum longifoliae** Hilbig 1972  
**Phalarido-Petasitetum officinalis** Schwickerath 1933  
**Agropyro-Aegopodietum podagrariae** R. Tx. 1967  
**Anthriscetum sylvestris** Hadač 1978  
**Urtico-Lamietum orvalae** Čarni 1994  
**Chaerophylletum bulbosi** R. Tx. 1937  
**Smyrniyetum perfoliati** Poldini 1989  
**Galeopsis tetrahit** comm.

<i>Rubus caesius</i> comm.	30BC10	11
<i>Urtica dioica</i> comm.	30BC11	2
<b>Circaeo lutetianae-Stachyretalia sylvaticae Passarge 1967</b>	30C	
Ruderalne in polnaravne združbe visokoraslih mezofilnih in nitrofilnih trajnic		
Ruderal and semi-natural communities of tall mesophilous and nitrophilous perennials		
<b>Atropion bellae-donnae Aichinger 1933</b>	30CA	
Vrstno bogate združbe čistin (posek) na s hranilni bogatih tleh v območju mešanih gozdov v srednji in zahodni Evropi		
Herb-rich clearing vegetation on nutrient-rich soils of nemoral zone of Central and Western Europe		
<i>Eupatorium cannabini</i> R. Tx. 1937	30CA01	8
<i>Epilobio-Atropetum bellae-donnae</i> R. Tx. 1931	30CA02	unpubl. (Marković 1982)
<i>Arctium nemorosi</i> R. Tx. 1950	30CA03	unpubl. (Marković 1982)
<i>Telekietum speciosae</i> Tregubov 1941	30CA04	unpubl. (Marković 1982)
<b>Impatienti noli-tangere-Stachyon sylvaticae Görs ex Mucina 1993</b>	30CB	
Nitrofilne združbe visokih steblik na zasenčenih gozdnih robovih in čistinah (posekah) od kolinskega do submontanskega pasu v srednji Evropi		
Nitrophilous tall-herb communities of shaded forest margins and clearings on loamy from colline to submontane belts in Central Europe		
<i>Epilobio-Geranium robertianum</i> Lohm. ex Görs & T. Müller 1969	30CB01	2
<i>Stachyo sylvaticae-Impatiensetum noli-tangere</i> Hilbig 1972	30CB02	unpubl. (Šilc)
<b>Convolvuletalia sepium Tx. ex Mucina 1993</b>	30D	
Polnaravna robna vegetacija na bregovih rek in drugih vodnih teles zmernega pasu Evrope in Sredozemlja		
Semi-natural saum vegetation on banks of rivers and other water bodies of temperate Europe and Mediterranean		
<b>Senecionion fluviatilis Tx. ex Moor 1958</b>	30DA	3
Nitrofilna visoka steblikovja z ovjalkami na rečnih bregovih in ob kanalih v srednji Evropi		
Tall-herb nitrophilous weil vegetation of river banks and ditches of Central Europe		
<i>Cuscuta europaea-Convolutetum sepium</i> R. Tx. 1947	30DA01	35
<i>Senecionetum fluviatilis</i> T. Müller ex Straka in Mucina 1993	30DA02	7
<i>Calystegio-Equisetetum telmateiae</i> S. Jovanović 1993	30DA03	unpubl. (Šilc)
<i>Helianthus tuberosus</i> comm.	30DA04	3
<i>Impatiens glandulifera</i> comm.	30DA05	13
<i>Phragmites australis</i> comm.	30DA06	2
<i>Fallopia japonica</i> comm.	30DA07	5
<i>Rudbeckia laciniata</i> comm.	30DA08	2
<i>Solidago gigantea</i> comm.	30DA09	28
Združbi na nivoju razreda		
Other communities of the class		
<i>Rubus caesius</i> -[ <i>Galio-Urticetea</i> ]	30XX01	3
<i>Urtica dioica</i> -[ <i>Galio-Urticetea</i> ]	30XX02	30
<b>Epilobietea angustifolii R. Tx. &amp; Preisling ex von Rochow 1951</b>		
Naravna pionirska vegetacija visokih steblik na gozdnih robovih in čistinah (posekah) na kislilih tleh v Evrosibiriji		
Spontaneous pioneer tall-herb vegetation of acidic soils of forest margins and clearings of Eurosiberia		



<b><i>Galeopsis-Senecionetalia sylvatici</i> Passarge 1981</b>			
Naravna pionirska vegetacija visokih steblik na gozdnih robovih in posekah na kislilih tleh v Evrosibiriji			
Spontaneous pioneer tall-herb vegetation of acidic soils of forest margins and clearings of Eurosiberia			
<b><i>Epilobion angustifolii</i> Oberd. 1957</b>			
Vegetacija visokih steblik na gozdnih robovih in čistinah (posekah) na kislilih tleh v srednji in zahodni Evropi			
Tall-herb vegetation of acidic soils of forest margins and clearings of Central and Western Europe			
<i>Digitali ambiguae-Calamagrostietum arundinaceae</i> Sillinger 1933	31AB01	8	
<i>Pteridetum aquilini</i> Jouanne & Chouard 1929	31AB02	1	
(incl. <i>Pteridium aquilinum</i> comm.)			
<b>VEGETACIJA ZMERNE CONE</b>			
<b>Vegetation of temperate zones</b>			
<b>VEGETACIJA TRAVNIKOV, RESAV IN ROBOV V ZMERNEM PASU</b>			
<b>Vegetation of temperate grasslands, heathlands and fringes</b>			
<b><i>Molinio-Arrhenatheretea</i> R. Tx. 1937</b>			
Antropogeni pašniki in travniki na globljih bolj ali manj rodovitnih tleh Evrazije	32	9	
Anthropogenic pastures and meadows on deeper, more or less fertile soils of Eurasia			
<b><i>Molinetalia</i> Koch 1926</b>	32A	4	
Boreotemperatni in delno subarktčni vlažni košeni travniki na mineralnih in šotnih tleh			
Boreo-temperate and partly subarctic wet mown meadows on mineral and peaty soils			
<b><i>Molinion caeruleae</i> Koch 1926</b>	32AA	14	
Vlažni negnojeni travniki v nižinah zmernega pasu Evrope			
Wet unfertilised meadows at low-altitudes of temperate Europe			
<i>Selimo-Molinetum caeruleae</i> Kuhn 1937	32AA01	36	
<i>Gentiano asclepiadeae-Molinetum caeruleae</i> Oberd. 1957	32AA02	2	
<i>Gentiano pneumonanthes-Molinetum litoralis</i> Ilijanić ex Kuyper et al. 1978	32AA03	63	
<i>Junco-Molinetum</i> Preising in R. Tx. & Preising ex Klapp 1954	32AA04	36	
<i>Sanguisorbo-Festucetum commutatae</i> Bal.-Tul. 1959	32AA05	15	
<i>Sanguisorbo-Festucetum pratensis</i> Seliškar in Čarni et al. 1992 nom. nud.	32AA06	5	
<i>Carici davallianae-Molinetum</i> Španiková 1978	32AA07	28	
<i>Schoeno ferruginei-Molinetum caeruleae</i> Martinič 2001	32AA08	52	
<i>Deschampsio-Plantaginetum altissimae</i> Ilijanić 1979	32AA09	49	
<i>Plantagini altissimae-Molinetum caeruleae</i> Marchiori & Sburliano 1982	32AA10	8	
<i>Junco conglomerati-Betonicetum</i> Zelnik 2005	32AA11	62	
<i>Schoeno nigricantis-Molinetum caeruleae</i> Martinič 1991	32AA12	19	

<i>Euphorbia villosae-Molinietum caeruleae</i> Accetto 2009	32AA13	13
<i>Molinia caerulea</i> comm. (incl. <i>Molinietum</i> W. Koch 1926)	32AA14	40
<i>Carex gracilis</i> comm. (sensu Poldini 1989)	32AA15	10
<i>Menyanthes trifoliata</i> comm.	32AA16	5
<b><i>Calthion palustris</i> R. Tx. 1937</b>	32AB	3
Vlažni travniki, pašniki in zeliščne združbe na rodovitnih mineralnih tleh zmernega pasu Evrope		
Wet meadows, pastures and herblands on fertile mineral soils of temperate Europe		
<i>Angelico-Cirsietum oleracei</i> R. Tx. 1937	32AB01	26
<i>Cirsietum rivularis</i> Nowiński 1928	32AB02	7
<i>Scirpetum sylvatici</i> Ralski 1931	32AB03	9
<i>Dactylorhizo-Scirpetum georgiani</i> Zelnik 2004	32AB04	5
<b><i>Filipendulo-Petastion</i> Br.-Bl. ex Duvigneaud 1949</b>	32AC	
Vlažna visoka steblikovja na rodovitnih mineralnih tleh zmernega pasu Evrope		
Wet tall herblands on fertile mineral soils of temperate Europe		
<i>Filipendulo-Geranietum palustris</i> W. Koch 1926	32AC01	25
<i>Lysimachio vulgaris-Filipenduletum</i> Bal.-Tul. 1978	32AC02	6
<i>Valeriano officinali-Filipenduletum</i> Sissingh in Westhoff et al. ex van Donselaar 1961	32AC03	8
<i>Epilobio hirsuti-Filipenduletum</i> Sougnéz 1957 nom. invers. propos.	32AC04	1
<i>Mentha aquatica-Juncetum effusi</i> Aichinger 1963 nom. invers. propos.	32AC05	1
<i>Filipendulo-Menthetum longifoliae</i> Zlinská 1989	32AC06	3
<i>Chaerophyllo hirsuti-Filipenduletum</i> Niemann et al. 1973	32AC07	1
<i>Aconito-Filipenduletum</i> Seliškar et al. 1994 nom. ined.	32AC08	1
<i>Veronico longifoliae-Filipenduletum</i> Seliškar et al. 1994 nom. ined.	32AC09	2
<i>Lysimachia vulgaris</i> comm.	32AC10	1
<i>Iridetum sibiricae</i> Philippi 1960	32AC11	unpubl. (Seliškar 1996)
<b><i>Deschampsion cespitosae</i> Horvatić 1930</b>	32AD	
Travniki na poplavnih aluvialnih ravninah v subcelinskih predelih Evrope		
Floodplain alluvial meadows of sub-continental regions of Europe		
<i>Succisello inflexae-Deschampsietum cespitosae</i> Ellmauer in Ellmauer & Mucina 1993	32AD01	92
<i>Agrostio-Juncetum conglomerati</i> Segulja 1974	32AD02	52
<i>Potentillo reptantis-Allietum angulosi</i> Zelnik 2005	32AD03	11
<i>Phragmiti-Euphorbietum palustris</i> Issler 1932	32AD04	1
<i>Serratulo-Plantagnetum altissimae</i> Ilijanić 1968	32AD05	unpubl. (Čarni)
<i>Veronico longifoliae-Euphorbietum lucidae</i> Bal.-Tul. & Knežević 1975	32AD06	unpubl. (Čarni)
Združbe na nivoju reda		
Other communities of the order		
<i>Filipendula ulmaria</i> -[ <i>Molinietalia</i> ]	32AX01	4
<i>Succisella inflexa</i> -[ <i>Molinietalia</i> ]	32AX02	4
<i>Eriophorum latifolium</i> -[ <i>Molinietalia</i> ]	32AX03	1
<b><i>Arrhenatheretalia elatioris</i> Tx. 1931</b>	32B	

Pašniki in travniki na dobro prepustnih razmeroma rodovitnih mineralnih tleh			
Pastures and meadows on well-drained relatively fertile mineral soils			
<b><i>Arrhenatherion elatioris</i> Luquet 1926</b>			
Travniki na dobro prepustnih razmeroma rodovitnih mineralnih tleh v nižinah zahodne in srednje Evrope			
Meadows of well-drained, relatively fertile mineral soils at lower altitudes of Western and Central Europe			
<i>Pastinaco-Arrhenatheretum</i> Passarge 1964	32BA		
<i>Ranunculo bulbosi-Arrhenatheretum</i> Ellmauer in Ellmauer & Mucina 1993	32BA01	103	
<i>Ranunculo repentis-Alopecuretum pratensis</i> Ellmauer in Ellmauer & Mucina 1993	32BA02	38	
<i>Ononido-Arrhenatheretum</i> (Tomažič & Horvatič 1941) Ilijanić & Šegulja 1983	32BA03	27	
<i>Filipendulo vulgaris-Arrhenatheretum</i> Hundt & Hübl 1983	32BA04	1	
<i>Cichorietum intybi</i> R. Tx. ex Sissingh 1969	32BA05	4	
<i>Bromo-Cynosuretum cristati</i> Horvatič 1930	32BA06	9	
<i>Triseti-Centaureetum macroptili</i> Zelnik 2007	32BA07	36	
<i>Festucetum pratensis</i> Soó (1938) 1955	32BA08	28	
<i>Festuco-Agrostietum</i> Horvat 1962 nom. nud.	32BA09	10	
<i>Gaudimio-Festucetum pratensis</i> Seliškar 1986 nom. nud.	32BA10	3	
<i>Lolietum multiflorae</i> Dietl & Lehmann 1975	32BA11	10	
<i>Centaureo carnolicae-Arrhenatheretum elatioris</i> Oberd. 1963 corr. Poldini & Oriolo 1994	32BA12	3	
<i>Anthoxantho-Brometum erecti</i> Poldini 1980	32BA13	unpubl. (Čarni)	
<i>Holcus lanatus</i> comm.	32BA14	2	
<i>Festuca rubra</i> comm.	32BA15	8	
(incl. <i>Festucetum rubrae</i> Seliškar 1986 nom. ined.)	32BA16	11	
<i>Dactylis-Festuca pratensis</i> comm.	32BA17	4	
<i>Arrhenatherion</i> comm.	32BA18	17	
<i>Arrhenatheretum elatioris</i> s. lat.	32BA19	63	
<b><i>Cynosurion cristati</i> R. Tx. 1947</b>	32BC	2	
Pašniki na razmeroma prepustnih, rodovitnih, mineralnih tleh v nižinah srednje in zahodne Evrope			
Pastures of relatively well-drained, fertile mineral soils at lower altitudes in Central and Western Europe			
<i>Lolium perennis-Cynosuretum cristati</i> Br.-Bl. & De Leeuw 1936 nom. invers. propos.	32BC01	11	
<i>Lolietum perennis</i> Gams 1927	32BC02	45	
<i>Festuco commutatae-Lolietum</i> nom. nud.	32BC03	unpubl. (Čop, Seliškar)	
<b><i>Plantagini-Prunellalia</i> Ellmauer &amp; Mucina 1993</b>	32C		
Z zelišči bogate, delno pohojene združbe na zasenčenih rastiščih zmernega in borealnega pasu Evrope			
Herb-rich, slightly trampled communities of shaded habitats of temperate and boreal Europe			
<b><i>Alchemillo-Ranunculion repentis</i> Passarge 1979</b>	32CA		
Z zelišči bogate, delno pohojene združbe na zasenčenih rastiščih zmernega in borealnega pasu Evrope			
Herb-rich, slightly trampled communities of shaded habitats of temperate and boreal Europe			
<i>Prunello-Ranunculetum repentis</i> Winterhoff 1963	32CA01	11	
<i>Juncetum macri</i> (Diemont et al. 1940) R. Tx. 1950	32CA02	2	
<i>Oxalido-Duchesneetum indicae</i> Jackowiak 1992	32CA03	unpubl. (Šilc)	

<b>Poo alpinae-Trisetetalia Ellmauer et Mucina 1993</b>	32D	
Mezofilni travniki in pašniki na visokih nadmorskih višinah zmernega pasu Evrope		
High-altitude mesic hay meadows and pastures of temperate Europe		
<b>Poion alpinae Gams ex Oberd. 1950</b>	32DA	
Pašniki govoda na rodovitnih tleh v subalpskem pasu v Alpah in Karpatih		
Cattle pastures of fertile soils in sub-alpine belt of the Alps and Carpathians		
<i>Crepido-Festucetum rubrae</i> Lüdi 1948		
<b>Trisetio flavescens-Polygonion bistortae Br.-Bl. et Tx. ex Marschall 1947</b>	32DA01	unpubl. (Seliškar 1996)
Mezofilni montanski travniki na rodovitnih mineralnih tleh v gorovjih srednje Evrope	32DB	
Mesic montane meadows on fertile mineral soils of the Central European mountain ranges		
<i>Astrantio-Trisetetum</i> Knapp & Knapp 1952		
<b>Poion supinae Rivas-Mart. &amp; Géhu 1978</b>	32DB01	45
Močno pohojeni pašniki na visokih nadmorskih višinah v gorovjih zmernega pasu Evrope	32DC	
Heavily-trampled pastures at high altitudes of mountain ranges of temperate Europe		
<i>Alchemillo-Poetum supinae</i> Aichinger 1933 corr. Oberd. 1971		
<i>Alchemillo-Trisetetum</i> Horvat ex Horvat et al. 1974		
<b>Potentillo-Polygonetalia avicularis Tx. 1947</b>	32DC01	3
Občasno poplavljen motena, s hranili bogata travišča zmernega pasu Evrope	32DC02	unpubl. (Čarni)
Temporarily flooded disturbed, nutrient-rich grasslands of temperate Europe	32E	
<b>Potentillion anserinae Tx. 1947</b>	32EA	
Pritlične zeliščne združbe raznolikih rastišč v vlažno-suhih ali brakično-sladkovodnih razmerah		
Low herb communities of variable habitats with wet-dry, or brackish-fresh habitat conditions		
<i>Ranunculo repentis-Alopecuretum geniculati</i> R. Tx. 1937		
<i>Rumici crispi-Agrostietum stoloniferae</i> Moor 1958	32EA01	1
<i>Dactylido-Festucetum arundinaceae</i> R. Tx. ex Lohm. 1953	32EA02	34
<i>Junco inflexi-Menthetum longifoliae</i> Lohm. 1953	32EA03	1
<i>Trifolio-Agrostietum stoloniferae</i> Marković 1978	32EA04	45
<i>Potentilletum anserinae</i> Rapaics 1927	32EA05	9
Združbe na nivoju razreda	32EA06	unpubl. (Šilc)
Other communities of the class		
<i>Echium vulgare</i> -[ <i>Molinio-Arrhenatheretea</i> ]	32XX01	6
<i>Festuca rubra</i> ssp. <i>rubra</i> -[ <i>Molinio-Arrhenatheretea</i> ]	32XX01	58
<i>Arrhenatherum elatius</i> -[ <i>Molinio-Arrhenatheretea</i> ]	32XX01	4
<i>Galium mollugo</i> -[ <i>Molinio-Arrhenatheretea</i> ]	32XX01	3
<i>Calamagrostis epigejos</i> -[ <i>Molinio-Arrhenatheretea</i> ]	32XX01	3
	33	
<b>Trifolio-Geranietea sanguinei T. Müller 1962</b>		
Vegetacija termofilnih gozdnih robov in visokih steblik na s hranili siromašnih rastiščih od submediteranske do subborealne cone Evrope in Makaronezije		
Thermophilous woodland fringe and tall-herb vegetation of nutrient-poor sites in the submediterranean to subboreal zones of Europe and Macaronesia		
<b>Origanetalia vulgaris T. Müller 1962</b>	33A	

- Mezofilna in subkserofilna vegetacija robov in visokih steblik na s hranili siromašnih, z bazami bogatih rastiščih v zmernem do subborelnem pasu Evrope  
 Mesophilous and subxerophilous fringe and tall-herb vegetation of nutrient-poor, base-rich sites in temperate to subboreal Europe  
**Trifolion medii T. Müller 1962**  
 33AAA
- Mezofilna do subkserofilna vegetacija robov na s hranili siromašnih tleh na nižjih nadmorskih višinah zmerne pasu Evrope  
 Mesophilous and subxerophilous fringe vegetation on nutrient poor soils at lower altitudes of temperate Europe  
 33AA01 17  
 33AA02 28  
 33AA03 14  
 33AA04 29  
 33AA05 18  
 33B
- Agrimonia-Victetum cassubicae* Passarge 1967 nom. invers. propos.  
*Trifolio-Agrimoniolum eupatorii* Müller 1962  
*Knautio-Melampyretum nemorosi* Čarni 1997  
*Trifolio medii-Melampyretum nemorosi* Dierschke 1973  
*Melampyrum pratense* comm.
- Anthertico ramosi-Geranietalia sanguinei Julve ex Dengler in Dengler et al. 2003**  
 Kserofilna vegetacija robov in visokih steblik na s hranili revnih, z bazami bogatih tleh v submediteranskem, zmernem in subborelnem območju Evrope  
 Xerophilous fringe and tall-herb vegetation of nutrient-poor, base-rich soils in the submediterranean, temperate and subboreal zones of Europe  
**Geranium sanguinei R. Tx. in T. Müller 1962**  
 33BA
- Kserofilna vegetacija robov in visokih steblik subkontinentalne zahodne in srednje Evrope  
 Xerophilous fringe and tall-herb vegetation of subcontinental Western and Central Europe  
 33BA01 7  
 33BA02 14  
 33BA03 10  
 33BA04 13  
 33BA05 11  
 33BA06 10  
 33BC
- Origano-Campanuletum bononiensis* Čarni et al. 2005  
*Bupleuro longifolii-Laserpitietum latifolii* T. Müller 1978  
*Laserpitietum sileris* Springer 1987  
*Peucedanetum cervariae* Kaiser 1926  
*Knautio-Dictamnatum albi* Čarni 1997  
*Scabioso hladnikianae-Grafietum golakae* Čarni 2007  
**Dictamno-Ferulagion galbaniferae (van Gils et al. 1975) de Foucault et al. ex Čarni & Dengler in Mucina et al. 2009**  
 33BC
- Kserofilna vegetacija robov in visokih steblik v Ilirski in Dinarski regiji Balkanskega polotoka  
 Xerophilous fringe and tall-herb vegetation of the Illyrian and Dinaric regions of the Balkan Peninsula  
 33BC01 1  
 33BC02 9  
 33BC03 1  
 33BC04 1  
 33BC05 10  
 33BC06 1  
 33BC07 2  
 33BC08 4
- Scorzonero villosae-Trifolietum alpestris* Čarni 1997  
*Libanotido-Laserpitietum sileris* van Gils et al. 1975  
*Cirsio pannonicae-Peucedanetum cervariae* van Gils et al. 1975  
*Cirsio-Clematidetum rectae* van Gils et al. ex Čarni 1997  
*Origano-Onidietum silaifolii* van Gils et al. ex Čarni 1997  
*Veronicetum barrelieri-jacquinii* van Gils et al. 1975 corr. Čarni 1997  
*Verbasco chaixii-Elymnetum hispidi* Poldini 2009  
*Vicia cracca* comm.
- Festuco-Brometea Br.-Bl. & Tx. ex Soó 1947**  
 34
- Vegetacija suhih travnikov in step na većinoma z bazami in koloidi bogatih tleh od submediteranske do hemiborealne cone Evrope  
 Dry grassland and steppe vegetation of mostly base- and colloid-rich soils of the submediterranean to the hemiboreal zones of Europe  
**Brometalia erecti Koch 1926**  
 34A
- Mezokserofilni travniki na globokih apnenčastih tleh

Meso-xerophilous grasslands on deep calcareous soils			
<b>Bromion erecti Koch 1926</b>	34AA	2	
Mezokserofilni in bazofilni travniki v suboceanskih predelih toplejšega zmernega pasu Evrope			
Meso-xerophytic basiphilous grasslands in sub-oceanic regions of warm-temperate Europe			
<i>Onobrychido-Brometum</i> T. Müller 1966	34AA01	257	
<i>Hypochoerido-Festucetum rupicolae</i> Steinbuch 1995	34AA02	54	
<i>Bromo-Danthonietum calycinae</i> Šugar 1973	34AA03	109	
<i>Bromo-Plantaginietum mediae</i> Horvat ex Horvat et al. 1974	34AA04	34	
(syn. <i>Bromo-Brachypodietum pinnati</i> Petkovšek 1977)			
<i>Scabioso hladnikiana-Caricetum humilis</i> (Horvat 1931) Tomažič 1941	34AA05	39	
<i>Festuco pseudovinae-Centaureetum rhenanae</i> Tomažič 1941	34AA06	22	
<i>Globulario cordifoliae-Andropogon ischaemi</i> Seljak 1974 nom. nud.	34AA07	3	
<i>Bromo-Festucetum sulcatae</i> Oberd. 1957	34AA08	2	
<i>Seslerio-Brometum</i> Oberd. 1957	34AA09	4	
<i>Seslerio-Koelerietum</i> Oberd. 1957	34AA10	1	
<i>Gladiolo illyrico-Molinietum litoralis</i> Horvat ex Gaži-Baskova & Šegulja 1978 nom. invers. propos.	34AA11	1	
<i>Seslerietum kalnikensis</i> Horvat ex Karačić 1964	34AA12	unpubl. (Čarni)	
<i>Pediculari julici-Brometum</i> Seliškar 1996 nom. inval.	34AA13	unpubl. (Seliškar 1996)	
<i>Potentillo pusillae-Teucrietum subspicatae</i> Seliškar 1996 nom. inval.	34AA14	unpubl. (Seliškar 1996)	
<b>Scorzonero villosae-Chrysopogonetalia grylli Horvatić et Horvatić 1963</b>	34B	19	
Objadranski suhi stepski submediteranski pašniki v predalpski, ilirski in dinarski regiji			
Amphiadriatic dry steppic submediterranean pastures of Prealpine, Illyrian and Dinaric regions			
<b>Scorzonierion villosae Horvatić 1963</b>	34BA		
Ilirsko-dinarski submediteranski suhi pašniki (tudi travniki) na globoki dekalificirani tera rosi in ilovnatih flišnih substratih			
Illyrian-Dinaric submediterranean xeric pasture on deep decalcified terra rossa soils and argillaceous flysch substrates			
<i>Danthonio-Scorzoneretum villosae</i> Horvat & Horvatić in Horvatić 1963	34BA01	83	
(incl. <i>Chrysopogoni-Euphorbietum nicaeensis</i> Horvatić 1958)			
<i>Gentianello pilosae-Brometum erecti</i> Dakskobler & Završnik 2009	34BA02	10	
<i>Scorzonero-Hypochoeretum maculatae</i> Horvatić 1958 nom. nud.	34BA03	unpubl. (Čarni)	
<b>Chrysopogono-Saturejon Horvat &amp; Horvatić 1934</b>	34BB		
Predalpsko-ilirski stepski pašniki na plitvih tleh na apnencu			
Praealpic-Illyrian steppic pastures on shallow calcareous soils			
<i>Genisto sericeae-Seslerietum juncifoliae</i> Poldini 1980	34BB01	12	
(syn. <i>Genisto sericeae-Seslerietum kalnikensis</i> Dakskobler 2005 nom. prov.)			
<i>Carici humilis-Centaureetum rupestris</i> Horvat & Horvatić 1934	34BB02	67	
(syn. <i>Stipo-Caricetum humilis</i> Trinajstić 1987)			
<i>Genisto holoptalae-Caricetum mucronatae</i> Horvat 1956	34BB03	20	
<i>Centaureo dichroanthiae-Globularietum cordifoliae</i> Pignatti 1953	34BB04	1	
<i>Saturejo-Caricetum humilis</i> Trinajstić 1999	34BB05	unpubl. (Čarni)	
<i>Chrysopogono-Centaureetum cristatae</i> Ferlan & Giacomini 1955	34BB06	3	

- Saturejo liburnicae-Seslerietum calcariae* Dakskobler 2006 nom. inval.  
*Primula auricula* comm.  
*Leontodonti brumatii-Seslerietum calcariae* Dakskobler et al. 2012
- Calluno-Ulicetea Br.-Bl. et Tx. ex Klika 1948**  
 Pritlikavi grmički in resave z volkom na kisljih tleh od nižine do montanskega pasu  
 Dwarf-shrub and mat-grass heaths on acidic soils from the planare to montane belts  
*Nardetalia strictae* Preising 1950  
 Volkovja na s hranili siromašnih tleh v nižini in srednjem višinskem pasu v zmernem, borealnem in subarktičnem območju Evrope  
 Mat-grass swards on nutrient-poor soils at low and mid-altitudes of the temperate, boreal and subarctic regions of Europe
- Violon caninae Schwickerath 1944**  
 Oligotrofni pašniki na tleh siromašnih s karbonati od nižin do submontanskega pasu v zahodni in srednji Evropi  
 Oligotrophic pastures on lime-poor soils in planare to submontane belts of western and Central Europe  
*Polygalo-Nardetum* (Preising 1953) Oberd. 1957  
*Festuco-Chamaespartietum sagittalis* Issler 1927 nom. mut. propos.  
*Arnico-Nardetum* Horvat et al. 1974  
*Festucetum capillatae* Horvat 1930
- Nardo-Agrostion tenuis Sillinger 1933**  
 Suhli pašniki z volkom od submontanskega do zgornjemontanskega pasu v gorovjih srednje Evrope in severnega Balkana  
 Mat-grass dry pastures of submontane to supramontane belts of the mountain ranges of Central Europe and the northern Balkan Peninsula  
*Homogyno alpinae-Nardetum* Mráz 1956  
*Calluno-Festucion capillatae* Horvat ex Horvat et al. 1974
- Oligotrofni pašniki na tleh, siromašnih s karbonati, od nižin do submontanskega pasu na zahodnem Balkanu  
 Oligotrophic pastures on lime-poor soils in planare to submontane belts of the western Balkan Peninsula  
*Genisto pilosae-Callunetum* Braun 1915 nom. invers. propos.  
*Genisto sagittalis-Callunetum* Horvat 1931 nom. invers. propos.  
*Vaccinio myrtilli-Callunetum* Bükler 1942 nom. invers. propos.  
*Verbascum austriacum-Festuca rupicola* comm.
- Helianthemetea guttati (Br.-Bl. in Br.-Bl. et al. 1952) Rivas Goday et Rivas-Mart. 1963**  
 Sredozemske acidofilne združbe, ki jih gradijo enoletna pritlikava zelišča in trave  
 Mediterranean acidophilous communities of annual low-grown herbs and grasses
- Thero-Airetalia Oberd. 1957**  
 Pionirska vegetacija na kisljih plitvih tleh v atlantski regiji z milimi zimami, subborealnem območju Evrope in na Madeiri  
 Pioneer vegetation on acidic shallow soils of winter-mild atlantic and sub-boreal regions of Europe and Madeira
- Thero-Airion R. Tx. ex Oberd. 1957**  
 Pionirska vegetacija na kisljih plitvih tleh v atlantski regiji z milimi zimami in v subborealni Evropi  
 Pioneer vegetation on acidic shallow soils of winter-mild atlantic and sub-boreal regions of Europe  
*Filagini-Vulpetium* Oberd. 1938

- 37**
- Koelerio-Corynephoretea Klika in Klika & Novák 1941**  
 Pionirska vegetacija na plitvih slabo razvitih tleh v površinskih skalah v zmernem pasu in borealni regiji Evrope, severnoatlantskih otokih in na Grenlandiji  
 Pioneer vegetation on shallow primitive soils and rocky outcrops of temperate and boreal regions of Europe, North Atlantic islands and Greenland  
**Alyso-Sedetalia Moravec 1967**  
 Pionirska travišča in terofiške trate na apnenčastih nerazvitih tleh v zmernem pasu  
 Temperate pioneer grasslands and therophyte swards on calcareous immature soils  
**Alyso alyssoidis-Sedion Oberd. et T. Müller in T. Müller 1961**  
 Termofilne naskalne združbe na površinskih preperevajočih apnenčastih skalah  
 Thermophilous stoncrop communities of weathered calcareous rocks  
*Saxifraga tridactylito-Poetum compressae* (Kreh 1945) Géhu & Leriq 1957  
*Alyso alyssoidis-Sedetum albi* Oberd. & T. Müller in T. Müller 1961  
*Seslerio kalmikensis-Jovibarbetum hirtae* Accetto 2002  
*Seslerio calcariae-Jovibarbetum hirtae* Accetto 2002  
*Arabido alpinae-Myosotidetum strictae* Accetto 2008  
*Geranium lucidum* comm. (syn. *Asplenio-Geranium lucidi* Poldini 1980) sensu Poldini 1989  
*Cerastietum pumili* Oberd. & T. Müller in T. Müller 1961  
*Petrorhagia-Tortula ruralis* comm.  
*Saxifraga tridactylites* comm.  
*Orlayetum grandiflorae* Poldini 1989

**VEGETACIJA LISTOPADNIH GOZDOV IN GRMIŠČ ZMERNEGA PASU**  
 Vegetation of temperate broad-leaved forests and shrublands

- Rhamno-Prunetea Rivas Goday et Borja Carbonell ex Tx. 1962**  
 Grmiščni zastor kot sukcesijski stadij ali kot rob listopadnih gozdov v območju mešanih gozdov Evrope  
 Shrub mantle vegetation seral or marginal to broad-leaved forests of the nemoral zone of Europe  
**Chelidonio-Robinetalia Jurko ex Hadač & Sofron 1980**  
 Subspontana antropogena grmišča in gozdni sestoji  
 Sub-spontaneous anthropogenic scrub and low woodlands  
**Chelidonio-Acerion negundi L. Ishbirdin & A. Ishbirdin 1989**  
 Vzhodnoevropski spontani gozdiči in grmišča, kjer prevladuje *Acer negundo*  
 Eastern European spontaneous groves and scrub dominated by *Acer negundo*  
*Sambuco-Aceretum negundi* Exner in Exner & Willner 2004  
**Chelidonio-Robinion Hadač & Sofron 1980**  
 Gozdovi in grmišča robinije s plevelno zeliščno podrasjo na glinenih, svežih tleh v srednji in vzhodni Evropi  
*Robinia pseudoacacia* groves and scrub with weedy understorey on loamy-clay, mesic soils of Central and Eastern Europe  
*Chelidonio-Robinetum* Jurko 1969  
**Arctio-Sambucion nigrae Doing 1969**



Bezgova grmišča opuščanih in ruderalnih rastišč zahodne in srednje Evrope		
Successional elder scrub in ruderal habitats of Western and Central Europe		
<i>Ailanthetum altissimae</i> Dihorou 1970	38AC01	unpubl. (Šilc)
<i>Bryonio dioicae-Sambucetum nigrae</i> Poldini et Vidali 1995	38AC02	unpubl. (Čarni)
<i>Lamio orvalae-Sambucetum nigrae</i> Poldini ex Poldini & Vidali 1995	38AC03	unpubl. (Čarni)
Združba na nivoju zveze		
Other community of the alliance		
<i>Sambucus nigra</i> -[ <i>Arctio-Sambucion nigrae</i> ]	38AX01A	11
<b><i>Prunetalia spinosae</i> Tx. 1952</b>	38B	6
Grmišča in zastorna vegetacija kot sukcesijski stadij ali kot rob listopadnih gozdov na območju mešanih gozdov Evrope		
Scrub and mantel vegetation seral or marginal to broadleaved forests of nemoral zone of Europe		
<b><i>Berberidion vulgaris</i> Br.-Bl. ex Tx. 1952</b>	38BA	
Submediteranska in južno-zmerna termofilna grmiščna vegetacija južne in srednje Evrope		
Submediterranean and south-temperate thermophilous scrub vegetation of Southern and Central Europe		
<i>Ligustro-Prunetum</i> R. Tx. 1952		
<i>Omphalodo vernaе-Coryletum avellanae</i> Čarni 1997	38BA01	21
<i>Galantho nivalis-Coryletum avellanae</i> Poldini 1980	38BA02	13
<i>Fragulo-Prunetum mahaleb</i> Poldini 1980	38BA03	19
<i>Fraxino-Cornetum hungariace</i> Čarni 1998	38BA04	12
<i>Clematido-Rubetum ulmifolii</i> Poldini 1980	38BA05	9
<i>Rubo ulmifolii-Ligustretum</i> Poldini 1989	38BA06	2
<i>Fragulo rupestris-Cotinetum coggygriae</i> Poldini & Vidali 2002	38BA07	12
(incl. <i>Cotinus coggygria</i> comm.)	38BA08	11
<i>Ostryo-Cornetum sanguineae</i> Čarni 1997	38BA09	10
<i>Brachypodio rupestris-Ostryetum carpiniifoliae</i> Čarni 1997	38BA10	13
<i>Hippophao-Berberidetum</i> Moor 1958	38BA11	unpubl. (Čarni)
<i>Prunus spinosa</i> comm.	38BA12	7
<b><i>Carpino-Prunion spinosae</i> Weber 1974</b>	38BB	
Mezofilne meje in grmišča na mezotrofnih, z bazami bogatih tleh v severnem zmernem pasu Evrope		
Mesophilous hedges and scrub of mesotrophic, base-rich soils in the northern temperate zone of Europe		
<i>Carpino-Prunetum</i> R. Tx. 1952	38BB01	20
<b><i>Pruno-Rubion radulae</i> Weber 1974</b>	38BC	
Združbe robid na nevtralnih in z bazami bogatih tleh zahodne in srednje Evrope		
Bramble communities on neutral and base-rich soils in Western and Central Europe		
<i>Rubo-Coryletum</i> Oberd. 1957	38BC01	16
<b><i>Sambucetalia racemosae</i> Oberd. ex Doing 1962</b>	38C	
Bezgova in vrbova sukcesijska grmišča na s hranili bogatih sprsteninastih tleh na gozdnih čistinah (posekah) v srednji Evropi		
Seral elder and willow scrub of nutrient-rich mull soils of forest clearings fo Central Europe		
<b><i>Sambuco-Salicion capreae</i> Tx. et Neumann ex Oberd. 1957</b>	38CA	
Bezgova in vrbova sukcesijska grmišča na s hranili bogatih sprsteninastih tleh na gozdnih čistinah (posekah) v srednji Evropi		

Seral elder and willow scrub of nutrient-rich mull soils of forest clearings fo Central Europe			
<i>Rubetum idaei</i> Gams 1927	38BC01	12	
<i>Sambucetum racemosae</i> Oberd. 1973	38BC02	2	
Združba na nivoju razreda			
Other community of the class			
<i>Cornus sanguinae</i> - [ <i>Rhamno-Prunetea</i> ]	38XX01	10	
<b><i>Carpino-Fagetea Passarge in Passarge &amp; Hofmann 1968</i></b>	39		
Mezofilni listopadni in mešani gozdovi na evtrofnih tleh v zmernem pasu Evrope, Anatolije, Kavkaza, Urala in južne Sibirije			
Mesic deciduous and mixed forests on eutrophic soils of temperate Europe, Anatolia, Caucasus, Urals and southern Siberia	39A	2	
<b><i>Fagetalia sylvaticae</i> Walas 1933</b>			
Bukovi gozdovi na s hranili bogatih tleh Evrope			
Beach forests of nutrient-rich soils of Europe	39AB		
<b><i>Aremonio-Fagion Török et al. ex Marinček et al. 1993</i></b>			
Bukovi in mešani bukovo-jelovi gozdovi v Ilirskem območju in zahodnih Dinaridih			
Beech and mixed beech-fir forests of the Illyrian region and western Dinarides	39AB01	224	
<i>Hacquetio-Fagetum</i> Ž. Košir ex Horvat et al. 1974			
(incl. <i>Hedero-Fagetum</i> Ž. Košir 1994)			
<i>Vicio oroboidi-Fagetum</i> (Horvat 1938) Pócs & Borhidi in Borhidi 1960	39AB02	72	
<i>Polysticho setiferi-Fagetum</i> Zupancič et al. 2001	39AB03	16	
(syn. <i>Festuco drymeiae-Fagetum</i> Magic 1968 sensu Cimpešek 1988)			
<i>Ornithogalo pyrenaici-Fagetum</i> Marinček et al. 1990	39AB04	92	
<i>Lamio orvalae-Fagetum</i> (Horvat 1938) Borhidi 1963	39AB05	239	
<i>Arunco-Fagetum</i> Ž. Košir ex Horvat et al. 1974	39AB06	45	
<i>Isopyro-Fagetum</i> Ž. Košir ex Horvat et al. 1974	39AB07	53	
<i>Cardamini savensi-Fagetum</i> Ž. Košir ex Willner 2002	39AB08	139	
<i>Omphalodo-Fagetum</i> (Tregubov 1957) Marinček et al. 1993	39AB09	529	
<i>Polysticho lonchitis-Fagetum</i> (Horvat 1938) Marinček in Poldini et Nardini 1993	39AB10	58	
<i>Anemone trifoliae-Fagetum</i> Tregubov 1962	39AB11	129	
<i>Stellario glochidispermae-Fagetum</i> (Zupancič 1969) Marinček et al. 1993	39AB12	3	
<i>Ranunculo plataniifolii-Fagetum</i> Marinček et al. 1993	39AB13	257	
<i>Aconito paniculati-Fagetum</i> (Zupancič 1969) Marinček et al. 1993	39AB14	2	
<i>Homogyno sylvestris-Fagetum</i> Marinček et al. 1993	39AB15	403	
<i>Ostryo-Fagetum</i> M. Wraber ex Trinajstić 1972	39AB16	103	
<i>Seslerio autumnalis-Fagetum</i> (Horvat 1950) M. Wraber ex Borhidi 1963	39AB17	236	
<i>Rhododendro hirsuti-Fagetum</i> Accetto ex Dakskobler 1998	39AB18	163	
<i>Allio victorialis-Fagetum</i> Tomažič ex Accetto 2002 nom. inval.	39AB19	23	
<i>Tanacetum clusii-Fagetum</i> Accetto 2002 nom. inval.	39AB20	1	
<i>Carici pendulae-Fagetum</i> Ž. Košir 2007 nom. nud.	39AB21	unpubl. (Ž. Košir 2007)	
<i>Rusco hypoglossi-Fagetum</i> Ž. Košir 2007 nom. nud.	39AB22	unpubl. (Ž. Košir 2007)	

<i>Aconito lycoctoni-Fagetum</i> Accetto 1999 nom. nud.	39AB23	unpubl. (Accetto 1999)
<i>Astrantio majoris-Fagetum</i> Accetto 1999 nom. nud.	39AB24	unpubl. (Accetto 1999)
<i>Hemerocallido lilio-asphodelo-Ostryetum</i> Poldini 1982	39AB25	unpubl. (Daksobler & Čušin 2003)
<i>Festuco drymeiae-Abietetum</i> Vukelić & Baričević 2007	39AB26	unpubl. (Daksobler & Marinšek 2009)
<i>Festuco-Abietetum</i> Ž. Košir 2010 nom. inval.	39AB27	unpubl. (Ž. Košir 2010)
<i>Clematido-Abietetum</i> Ž. Košir 2010 nom. inval.	39AB28	unpubl. (Ž. Košir 2010)
<i>Sorbo ariae-Abietetum</i> Ž. Košir 2010 nom. inval.	39AB29	unpubl. (Ž. Košir 2010)
<i>Homogyno sylvestris-Abietetum</i> Ž. Košir 2010 nom. inval.	39AB30	unpubl. (Ž. Košir 2010)
<i>Lycopodio-Abietetum</i> Ž. Košir 2010 nom. inval.	39AB31	unpubl. (Ž. Košir 2010)
<b>Quercu-Carpinetalia Moor 1976</b>	39B	
Hrastovo-gabrovi gozdovi na globokih, s hranili bogatih tleh Evrope		
Oak-hornbeam woods on deep nutrient-rich soils of Europe		
<b>Erythronio-Carpinion (Horvat 1958) Marinček in Wallnöfer et al. 1993</b>	39BB	
(incl. <i>Fraxino pannonicae-Carpinion</i> betuli. Accetto 2006)		
Termofilni ilirski in severno italijanski hrastovo-gabrovi gozdovi		
Thermophilous Illyrian and northern Italian oak-hornbeam woods		
<i>Pseudostellario-Carpinetum betuli</i> Accetto 1973	39BB01	27
<i>Carici albae-Tiliatum cordatae</i> Müller & Görs 1958	39BB02	2
<i>Asperulo odoratae-Carpinetum</i> M. Wraber 1969	39BB03	12
<i>Helleboro nigri-Carpinetum</i> Marinček in Wallnöfer et al. 1993	39BB04	15
<i>Carici umbrosae-Quercetum petraeae</i> Poldini in Marinček 1994	39BB05	26
<i>Carici albae-Carpinetum betuli</i> Čušin 2002	39BB06	67
<i>Vaccinio myrtilli-Carpinetum</i> (M. Wraber 1969) Marinček 1994	39BB07	74
<i>Abio albae-Carpinetum betuli</i> Marinček 1994	39BB08	48
<i>Pruno padi-Carpinetum betuli</i> (Marinček & Zupančič 1982) Marinček 1994	39BB09	14
<i>Seslerio autumnalis-Carpinetum betuli</i> Zupančič 1997 nom. nud.	39BB10	1
<i>Ornithogalo pyrenaici-Carpinetum betuli</i> Marinček et al. in Marinček 1994	39BB11	116
<i>Asaro-Carpinetum betuli</i> Lausi 1964	39BB12	20
<i>Epimedio-Carpinetum</i> (Horvat 1938) Borhidi 1963	39BB13	unpubl. (Marinček)
<i>Fraxino pannonicae-Carpinetum betuli</i> Soó & Borhidi 1962	39BB14	unpubl. (Accetto 2006)
<b>Aceretalia pseudoplatani Moor 1976</b>	39C	
Zmerni in submediteranski javorjevi gozdovi na meliščih v zmernem pasu Evrope		
Temperate and submediterranean maple scree forests of temperate Europe		
<b>Tilio-Acerion Klika 1955</b>	39CA	
Submontanski javorjevo lipovi gozdovi na strmih pobočjih z milo in vlažno mezklimo v zahodni in srednji Evropi (v Sloveniji tudi v montanskem in altimontanskem pasu)		
Submontane maple-lime forests on steep slopes with a mild and humid mesoclimate of Western and Central Europe		
<i>Corydalido cavae-Aceretum pseudoplatani</i> Moor 1938	39CA01	2
<i>Hacquetio-Fraxinetum</i> Marinček in Wallnöfer et al. 1993	39CA02	84
<i>Arunco-Aceretum pseudoplatani</i> Moor 1952	39CA03	10

<i>Ulmus-Aceretum</i> Berger 1922	39CA04	36
<i>Lamio orvalae-Aceretum</i> P. Košir & Marinček 1999	39CA05	48
<i>Omphalodo vernae-Aceretum</i> P. Košir & Marinček 1999	39CA06	30
<i>Dentario polyphyllae-Aceretum</i> P. Košir & Marinček 1999	39CA07	90
<i>Saxifrago petraeae-Tilietum</i> Dakskobler 1999	39CA08	111
<i>Corydalis ochroleuca-Aceretum</i> Accetto 1991	39CA09	35
<i>Dryopteris affinis-Aceretum</i> P. Košir 2005	39CA10	43
<i>Tilio cordatae-Aceretum pseudoplatani</i> Ž. Košir 1954 (syn. <i>Ostrya-Tilietum</i> Ž. Košir 1954)	39CA11	20
<i>Paeonio officinalis-Tilietum platyphylli</i> P. Košir & Surina 2005	39CA12	19
<i>Veronico sublobatae-Fraxinetum</i> Dakskobler 2006 nom. inval.	39CA13	7
<i>Veratro nigri-Fraxinetum excelsioris</i> Dakskobler 2007	39CA14	196
<i>Ornithogalo pyrenaici-Fraxinetum</i> Čušin & Dakskobler ex Dakskobler 2007	39CA15	25
<i>Lamio orvalae-Fraxinetum excelsioris</i> Ž. Košir 2009 nom. prov.	39CA16	15
<i>Cardamino enneaphylli-Aceretum</i> Ž. Košir 2009 nom. prov.	39CA17	13
<b>Quercetea pubescentis Doing-Kraft ex Scamoni &amp; Passarge 1959</b>	40	
Toploljubni hrastovi in iglasti gozdovi v polsuhih območjih južne in vzhodne Evrope in Anatolije		
Thermophilous oak and conifer woodlands of semi-dry regions in Southern and Eastern Europe and Anatolia		
<b>Fraxino orni-Cotinetalia Jakus 1961</b>	40A	
Toplojubne zastorne družbe, psevdomakija in šibljak, ki tvorijo rob grmičastih hrastovih gozdov v submediteranski regiji jugovzhodne Evrope		
Thermophilous mantle, pseudomaquis and šibljak fringing oak forests of submediterranean regions of south-eastern Europe		
<b>Rhamno-Paliurion Trinajstić (1978) 1996</b>	40AA	
Submediteranski šibljak na vzhodni jadranski obali Balkanskega polotoka		
Submediterranean šibljak of the eastern Adriatic coasts of the Balkan Peninsula		
<i>Rhamno intermediae-Paliuretum</i> (Horvatić 1963) Trinajstić 1995	40AA01	unpubl. (Čarni & Šilc)
<b>Quercetalia pubescenti-petraeae Klika 1933</b>	40B	
Evropski conalni kserotermofilni submediteranski hrastovi in kraškogabrovi gozdovi južne Evrope in subkontinentalni in reliktni iglasti gozdovi v Sredozemlju		
European zonal xero-thermophilous submediterranean oak and hornbeam forests of southern Europe and subcontinental and relic fir-pine forests of the Mediterranean		
<b>Fraxino orni-Ostryion carpinifoliae Tomažič 1940</b> (syn. <i>Carpinion orientalis</i> Horvat 1958)	40BA	8
Objadranski in južno Balkanski termofilni hrastovi in gozdovi črnega gabra na apnencu		
Amphiadriatic and southern Balcanic thermophilous oak hop hornbeam forests on calcareous substrates		
<i>Quercus-Ostryetum carpinifoliae</i> Horvat 1938	40BA01	53
<i>Seslerio autumnalis-Ostryetum</i> Horvat & Horvatić ex Horvat et al. 1974	40BA02	80
<i>Aristolochio luteae-Quercetum pubescentis</i> (Horvat 1959) Poldini 2008	40BA03	107
(syn. <i>Ostryo-Quercetum pubescentis</i> (Horvat 1959) Trinajstić 1977)		
<i>Bromo erecti-Quercetum</i> Zupančič 1997 nom. inval.	40BA04	2
<i>Seslerio autumnalis-Quercetum pubescentis</i> Zupančič 1999	40BA05	35

<i>Amelanchiero-Ostryetum</i> Poldini (1978) 1982	40BA06	29
<i>Cytisantho-Ostryetum</i> M. Wraber 1961	40BA07	17
<i>Quercu pubescentis-Carpinetum orientalis</i> Horvatić 1939	40BA08	10
<i>Corydalis ochroleuca-Ostryetum carpinifoliae</i> Zupancič 1997 nom. inval.	40BA09	1
<i>Erico-Ostryetum</i> Horvat 1959	40BA10	unpubl. (Čarni)
<i>Seslerio albicantis-Ostryetum</i> Lausi et al. corr. Poldini & Vidali 1995	40BA11	50
<i>Rhododendro hirsuti-Ostryetum carpinifoliae</i> Franz 2002 nom. inval.	40BA12	2
<i>Fraxino orni-Ostryetum carpinifoliae</i> Aichinger 1933	40BA13	3
<i>Sileno glareosae-Ostryetum carpinifoliae</i> Franz 2002 nom. prov.	40BA14	unpubl. (Franz 2002)
<i>Seslerio autumnalis-Pinetum nigrae</i> Zupancič & Žagar 2008	40BA15	17
<b><i>Quercion pubescenti-petraeae</i> Br.-Bl. 1932 nom. mut.</b>	40BC	
Srednjeevropski toploljubni hrastovi gozdovi na apnencu		
Central European calciphilous thermophilous oak forests		
<i>Serratulo tinctoriae-Quercetum petraeae</i> Ht. ex Zupancič & Žagar in Zupancič et al. 2009	40BC01	19
(syn. <i>Lathyro nigrae-Quercetum petraeae</i> Horvat (1938) 1958)		
<i>Molinio litoralis-Quercetum pubescentis</i> Šugar et al. 1981	40BC02	14
<i>Seslerio autumnalis-Quercetum petraeae</i> Poldini (1964) 1982	40BC03	35
<i>Potentillo albae-Quercetum pubescentis</i> A.O. Horvat 1973	40BC04	1
<i>Asplenio adianti-nigri-Quercetum petraeae</i> Ž. Košir ex Cimperšek 2008	40BC05	13
<i>Hacquetio-Quercetum cerris</i> Marinček & Šilc 1999	40BC06	8
<b><i>Quercetea roboris</i> Br.-Bl. ex Oberd. 1957</b>	41	
Kisloljubni hrastovi, hrastovo-brezovi in bukovi gozdovi na s hranili siromašnih tleh v zahodni, srednji in jugovzhodni Evropi		
Acidophilous oak, oak-birch and beech forests on nutrient-poor soils of Western, Central and southeastern Europe		
<b><i>Luzulo-Fagetalia</i> Scamoni &amp; Passarge 1959</b>	41A	
Kisloljubni bukovi gozdovi na s hranili siromašnih tleh v zahodni in srednji Evropi		
Acidophilous beech forests on nutrient-poor soils of Western and Central Europe		
<b><i>Luzulo-Fagion</i> Lohmeyer et Tx. in Tx. 1954</b>	41AA	
Kisloljubni bukovi gozdovi Evrope		
Acidophilous beech forests of Europe		
<i>Castaneo-Fagetum sylvaticae</i> Marinček & Zupancič (1979) 1995	41AA01	101
<i>Luzulo-Fagetum sylvaticae</i> Meusel 1937	41AA01	209
<i>Blechno-Fagetum sylvaticae</i> (Tüxen & Oberd. 1958) Rivas-Martínez 1962	41AA01	87
<i>Hieracio rotundati-Fagetum</i> Ž. Košir 1994	41AA01	15
	41B	
<b><i>Quercetalia roboris</i> Tx. in Barner 1931</b>		
Kisloljubni hrastovi, hrastovo-brezovi in borovi gozdovi na s hranili siromašnih tleh Evrope		
Acidophilous oak, oak-birch and pine forests on nutrient-poor soils of Europe		
<b><i>Castaneo-Quercion petraeae</i> Soó 1964</b>	41BA	
Kisloljubni submediteranski kostanjevo-hrastovi gozdovi Balkana in jugovzhodne Evrope		
Acidophilous submediterranean chestnut-oak forests of the Balkans and south-eastern Europe		

- Quercus-Castanetum* Horvat 1938  
**Genisto germanicae-Quercion Neuhäusel et Neuhäuslová-Novotná 1967**  
 Kislojubni suhi hrastovi in hrastovo-brezovi gozdovi v srednji Evropi  
 Acidophilous dry oak and oak-birch forests of Central Europe  
*Leucobryo-Quercetum* (Marinček 1973) Marinček & Zupančič 1995  
*Calluno-Quercetum* (Marinček 1973) Marinček & Zupančič 1995  
*Pteridio-Betuletum* Trinajstić & Šugar ex Rauš & Matić 1994  
*Melampyro vulgati-Quercetum petraeae* Puncer & Zupančič 1979  
*Molinio-Quercetum petraeae* Šugar 1972  
*Thelyptero limbosperae-Quercetum roboris* Ž. Košir 1994 nom. nud.  
*Deschampsio flexuosae-Quercetum petraeae* Firbas 1928
- |        |    |                         |
|--------|----|-------------------------|
| 41BA01 |    | unpubl. (Čarni)         |
| 41BB   |    |                         |
| 41BB01 | 15 |                         |
| 41BB02 | 15 |                         |
| 41BB03 | 31 |                         |
| 41BB04 | 38 |                         |
| 41BB05 | 8  |                         |
| 41BB06 |    | unpubl. (Ž. Košir 1994) |
| 41BB07 |    | unpubl. (Ž. Košir 1994) |

## VEGETACIJA MONTANSKIH RESAV IN GOZDOV IGLAVCEV

### Vegetation of montane heathlands and coniferous forests

#### **Erico-Pinetea Horvat 1959**

Reliktni montanski borovi gozdovi in sorodna grmišča na apnencu in ultramafičnih substratih na Balkanu, v Alpah, na Karpatih in Krimu  
 Relict pine forests and related scrub on calcareous and ultramafic substrates of the Balkans, Alps, Carpathians and Crimea

#### **Erico-Pinetalia Horvat 1959**

Reliktni montanski borovi gozdovi in grmišča na apnencu na Balkanu, Apeninih, v Alpah in na Karpatih  
 Montane calcareous relict pine forests of the Balkans, Apennines, Alps and Carpathians

#### **Erico-Pinion sylvestris Br.-Bl. in Br.-Bl. et al. 1936 nom. invers. propos.**

Reliktni gozdovi rdečega (in v Sloveniji tudi črnega) bora na apnencu v Alpah in Centralnem Masivu (tudi v severnem delu Dinaridov)  
 Relict forests of *Pinus sylvestris* on calcareous substrates of the Alps and Massif Central

*Molinio litoralis-Pinetum sylvestris* Schmid ex Etter 1947 nom. invers. propos.

*Brachypodio-Pinetum sylvestris* Zupančič & Žagar 1997

*Fraxino ornii-Pinetum nigrae* Martin-Bosse 1967

*Alno incanae-Pinetum sylvestris* Poldini 1984

*Carici sempervirentis-Pinetum nigrae* Accetto (1996) 1999

*Daphno alpinae-Pinetum nigrae* Accetto 1999

*Genisto januensis-Pinetum sylvestris* Tomažič 1940

*Primulo carniolicae-Pinetum nigrae* Accetto 2008

#### **Rhododendro hirsuti-Ericetalia carnea Grabherr et al. 1993**

Subalpinske in alpinske prtilikave resave in skrivljena drevesa na kamnitih apnenčastih tleh, skalovju, lapijih (karren) in balvanih v Alpah, na Apeninih in v Dinaridih  
 Subalpine and alpine dwarf heath and krummholz on rocky calcareous soils, outcrops, lapies (karren) and boulders of the Alps, Apennines and the Dinarides

#### **Ericion carnea Rübhel ex Grabherr et al. 1993**

Subalpinske in alpinske prtilikave resave in skrivljena drevesa na kamnitih apnenčastih tleh, skalovju, lapijih (karren) in balvanih v Alpah, na Apeninih in v Dinaridih  
 Subalpine and alpine dwarf heath and krummholz on rocky calcareous soils, outcrops, lapies (karren) and boulders of the Alps, Apennines and northern Dinarides

<i>Rhododendretum hirsuti</i> Lüdi 1921	42BA01	9
<i>Pulsatillo vernalis-Dryadatum octopetalae</i> Dakskobler et al. 2008	42BA02	14
<i>Rhododendro hirsuti-Juniperetum sibiricae</i> Horvat 1962	42BA03	unpubl. (Surina)
<b><i>Betulo carpaticae-Alnetea viridis Rejmánek in Huml et al. 1979</i></b>	43	
Subalpínska jelševa in vrbova grmišča in skrivljena drevesa, bogata z zelišči, v subalpínskem pasu v Alpah in na Balkanu		
Subalpine herb-rich alder and willow scrub and krummholz of the subalpine belt of the Alps and the Balkans	43A	
<b><i>Alnetalia viridis Rübél ex Huml et al. 1979</i></b>		
Subalpínska jelševa in vrbova grmišča in skrivljena drevesa, bogata z zelišči, v subalpínskem pasu v Alpah in na Balkanu		
Subalpine herb-rich alder and willow scrub and krummholz of the subalpine belt of the Alps and the Balkans	43AB	
<b><i>Alnion viridis Schnyder 1930</i></b>		
Subalpínska grmišča zelene jelše na rodovitnih tleh v Alpah in na Balkanu	43AB01	6
Subalpine green alder scrub on fertile soils of the Alps and Balkans	43AB02	11
<i>Alnetum viridis</i> Br.-Bl. 1918	43AB03	unpubl. (Surina)
<i>Salicetum waldsteinianae</i> Beger 1922	43AB04	unpubl. (Dakskobler)
<i>Salicetum appendiculatae</i> Horvat et al. 1974		
<i>Aceri-Salicetum appendiculatae</i> Oberdorfer 1957		
<b><i>Vaccinio-Piceetea</i> Br.-Bl. in Br.-Bl. et al. 1939</b>	44	
Holarktični iglasti gozdovi na kisljih tleh borealne cone in na višjih nadmorskih višinah orobioma mešanih gozdov		
Holarctic coniferous forests on acidic soils of boreal zone and high-altitudes of nemoral orobiomes	44A	
<b><i>Piceetalia excelsae Pawłowski in Pawłowski et al. 1928</i></b>		
Evrazijski boreo-montanski smrekovi, jelovi gozdovi		
Eurasian boreo-montane spruce forests	44AA	3
<b><i>Picetion excelsae Pawłowski et al. 1928</i></b>		
Evropski boreomontanski smrekovi in borovi gozdovi na s hranili revnih rastiščih		
European boreo-montane spruce and pine forests of nutrient-poor habitats	44AA01	18
<i>Polysticho setiferi-Abietetum</i> Ž. Košir 1994	44AA02	42
<i>Prenantho purpureae-Piceetum</i> Zupančič 1999	44AA03	119
<i>Rhytidadelpho lorei-Piceetum</i> (M. Wraber 1953) Zupančič 1999	44AA04	66
<i>Sphagno-Piceetum</i> Kuoch 1954	44AA05	55
<i>Avenello flexuosae-Piceetum</i> M. Wraber ex Hadač in Hadač et al. 1969	44AA06	78
<i>Bazzanio-Abietetum</i> M. Wraber 1958	44AA07	126
<i>Galio rotundifolii-Abietetum</i> M. Wraber 1959	44AA08	31
<i>Luzulo sylvaticae-Piceetum</i> M. Wraber 1963	44AA09	90
<i>Mastigobryo-Piceetum</i> (Schmidt & Gaisberg 1936) Br.-Bl. & Sissingh in Br.-Bl. et al. 1939	44AA10	7
<i>Hieracio rotundati-Abietetum</i> Marinček 1995 nom. inval.	44AA11	10
<i>Paraleucobryo longifoliae-Abietetum</i> Belec 2009 nom. ined.	44AA12	3
<i>Dryopterido affinis-Abietetum</i> Ž. Košir 1994 nom. inval.	44AA13	unpubl. (Ž. Košir 1994)

<b>Abieti-Piceion (Br.-Bl. in Br.-Bl. et al. 1939) Soó 1964</b>	44AB	
Mezofilni jelovi in smrekovi gozdovi na rjavih gozdnih tleh v gorovjih srednje in jugozahodne Evrope (v Sloveniji tudi na bolj plitvih tleh)		
Mesophilous fir forests on brown forest soils of the Central and southwestern European mountains		
<i>Aposertido-Piceetum</i> Zupancič 1999	44AB01	32
<i>Asplenio-Piceetum</i> Kuoch 1954	44AB02	6
<i>Erico-Piceetum</i> Schweingruber 1972	44AB03	1
<i>Hacquetio-Piceetum</i> Zupancič (1980) 1999	44AB04	19
<i>Laburno alpini-Piceetum</i> Zupancič 1999	44AB05	24
<i>Lonicero caeruleae-Piceetum</i> Zupancič 1976	44AB06	45
<i>Petasiti-Piceetum</i> Zupancič 1999	44AB07	4
<i>Rhamno fallaci-Piceetum</i> Zupancič 1999	44AB08	13
<i>Ribeso alpini-Piceetum</i> Zupancič & Accetto 1994	44AB09	22
<i>Stellario montanae-Piceetum</i> Zupancič (1980) 1999	44AB10	19
<i>Rhodothamno-Laricetum</i> Willner et Zukrigl 1999	44AB11	140
<i>Asplenio viridae-Abietetum</i> Ž. Košir 1972 nom. inval.	44AB12	unpubl. (Ž. Košir 1994)
<i>Sorbo ariae-Abietetum</i> Košir 2000 nom. nud.	44AB13	unpubl. (Ž. Košir 2000)
<b>Calamagrostio arundinaceae-Abietion Horvat 1962 nom. invers. propos.</b>	44AC	
Igljasti gozdovi z podrastjo visokih zelišč na apnenčastih in dolomitnih balvanih v montanskem pasu zahodnega Balkana		
Coniferous forests with tall-herb undergrowth on limestone and dolomite boulder screes in montane to subalpine belt in western Balkans		
<i>Calamagrostio-Abietetum</i> Horvat (1950) 1962	44AC01	20
<i>Campanulo justinianae-Piceetum abietis</i> Accetto 2006	44AC02	17
<i>Neckero-Abietetum</i> Tregubov 1962	44AC03	16
<b>Chysanthemo rotundifolii-Piceion (Krajina 1933) Brezina &amp; Hadač in Hadač 1962</b>	44AD	
Z zelišči bogati mezofilni smrekovi gozdovi v srednji in severni Evropi		
Herb-rich mesophilous spruce forests of Central and North European mountains		
<i>Adenostylo glabrae-Piceetum</i> M. Wraber ex Zukrigl 1973	44AD01	51
(syn. <i>Homogyne sylvestris-Piceetum</i> Exner ex Poldini & Bressan 2007)		
<i>Seslerio albicantis-Piceetum</i> Egger 1952	44AD02	1
<b>Pinetalia sylvestris Oberd. 1957</b>	44B	
Celinski in borealni borovi gozdovi na s hranili siromašnih in hidromorfnih peščenih tleh		
Continental and boreal pine forests of nutrient-poor and hydromorphic, sandy soils		
<b>Pinion (Libbert 1933) Oberd. 1957</b>	44BA	
(syn. <i>Dicrano-Pinion</i> (Libbert 1933) Matuszkiewicz 1962)		
Borovi in brinovi gozdovi na kislh peščenih tleh		
European pine and juniper woodlands communities of acidic sandy soils		
<i>Galio rotundifolii-Pinetum</i> Zupancič & Čarni ex Čarni et al. 1992	44BA01	29
<i>Vaccinio myrtilli-Pinetum</i> Kobenza 1930	44BA02	79



<b>Roso pendulinae-Pinetea mugo Theurillat in Theurillat et al. 1995</b>	45	
Subalpinske združbe skrivljenih dreves v montanskem in subalpinskem pasu mešanih gozdov v gorovjih Evrope		
Subalpine krummholz of the montane to subalpine belts of the nemoral mountain ranges of Europe		
<b>Junipero-Pinetalia mugo Boşcaiu 1971</b>	45A	
Subalpinske združbe rušja in skrivljenih dreves v gorovjih v subalpinskem pasu mešanih gozdov v gorovjih Evrope		
Subalpine pine krummholz of mountains of the subalpine belt of mountain ranges of Europe		
<b>Pino mugo-Ericion Leibundgut 1948</b>	45AB	
(syn. <i>Erico-Pinetum mugo</i> Leibundgut 1948 nom. inv. propos.)		
Združbe skrivljenih dreves (krummholz) na apnencu v Alpah, na Karpatih in na severnem Balkanu		
Calcareous krummholz of the Alps, Carpathians and Balkans		
<i>Rhododendro hirsuti-Pinetum prostratae</i> Zöttl 1951	45AB01	162
(syn. <i>Rhodothamno-Rhododendretum hirsuti</i> (Aichinger 1933) Br.-Bl. & Sissingh in Br.-Bl. et al. 1939, <i>Rhodothamno-Pinetum mugo</i> Zupančič & Žagar 1980)		
<i>Hyperico grisebachii-Pinetum mugo</i> Horvat ex T. Wraber et al. in Zupančič et al. 2004	45AB02	20
<i>Rhododendro hirsuti-Pinetum mugo</i> T. Wraber in Zupančič et al. 2004 nom. nud.	45AB03	2
<i>Amelanchiero-Pinetum mugo</i> Minghetti in Pedrotti 1994	45AB04	unpubl. (Daxskobler 2004)
<b>Molinio-Betuletea pubescentis Passarge et G. Hofmann 1968</b>	46	
Aconalni gozdovi in grmišča na mezotrofnih barjih		
Azonal forest and shrubby mesotrophic mires		
<b>Molinio-Betuletalia pubescentis Passarge et G. Hofmann 1968</b>	46A	
Kisloljubni gozdovi in grmišča na mezotrofnih barjih		
Acidophilous forest and shrub communities of mesotrophic mires		
<b>Betulon pubescentis Lohmeyer et Tx. in Tx. 1955.</b>	46AA	
Kisloljubni gozdovi in grmišča na mokrih rastiščih na mezotrofnih barjih		
Acidophilous forest and shrub communities of wet sites in mesotrophic mires		
<i>Sphagno nemorei-Betuletum pubescentis</i> (Libbert 1933) Passarge 1968	46AA01	16
<i>Pino sylvestris-Betuletum pubescentis</i> Ellenberg & Klötzli 1972	46AA02	16
<i>Betulo-Quercetum roboris</i> Martinčič 1987 nom. nud.	46AA03	10
<i>Sphagno palustri-Betuletum pubescentis</i> Martinčič 1987 nom. nud.	46AA04	5
<i>Vaccinio uliginosi-Betuletum pubescentis</i> Libbert 1932	46AA05	26
<i>Betula pubescens-Picea abies</i> comm.	46AA06	8

## SREDOZEMSKA VEGETACIJA

### Vegetation of the mediterranean

#### SREDOZEMSKA GOZDNA IN GRMIŠČNA VEGETACIJA

##### Vegetation of mediterranean forests and shrublands

##### ***Quercetea ilicis* Br.-Bl. ex A. et O. Bolòs 1950**

Sredozemska makija, sredozemski borovi in hrastovi gozdovi in sorodna sklerofilna grmišča  
Mediterranean maquis, mediterranean pine and oak forests and associated sclerophyllous scrub

47

##### ***Quercetalia ilicis* Br.-Bl. ex Molinier 1934**

Vednozeleni, večinoma mezo- in supramediterranski hrastovi in borovi gozdovi ter reliktni lovorovi gozdovi v Sredozemlju  
Evergreen, mainly meso- to supramediterranean oak and pine woodlands and relict laurel forests of the Mediterranean

47A

##### ***Quercion ilicis* Br.-Bl. ex Molinier 1934**

Vednozeleni in listopadni gozdovi hrasta prnarja na apnencu v zahodnem Sredozemlju  
Evergreen and semideciduous calciphilous kermes oak forests of the Western Mediterranean

47AA

47AA01 2

*Fraxino ornii-Quercetum ilicis* Horvatić (1956) 1958  
(uporabljeno v Sloveniji: *Ostryo-Quercetum ilicis* Trinajstić (1965) 1974)

## ACONALNI GOZDOVI IN GRMIŠČA

### Azonal forests and scrub

##### ***Salicetea purpureae* Moor 1958**

Vrbova grmišča in gozdovi ob nižinskih in gorskih rekah od zmernega do arktičnega pasu Evrope in Grenlandije  
Willow scrub and woodland of margins of lowland and mountain rivers of temperate to arctic zones of Europe and in Greenland

48 2

48A

##### ***Salicetalia purpureae* Moor 1958**

Vrbova grmišča in gozdovi ob nižinskih in gorskih rekah od zmernega do arktičnega pasu Evrope in Grenlandije  
Willow scrub and woodland of margins of lowland and mountain rivers of temperate to arctic zones of Europe and in Greenland

48AA

##### ***Salicion eleagno-daphnoidis* (Moor 1958) Grass 1993**

Vrbova grmišča na bregovih potokov v montskem in subalpinskem pasu v Alpah in Karpatih  
Willow scrub of stream banks of the montane to subalpine belts of the Alps and Carpathians

##### ***Salici-Myricaritetum* Moor 1958**

##### ***Salicetum incano-purpureae* Sillinger 1933**

##### ***Salici incanae-Hippophaetum* Br.-Bl. in Volk 1939**

##### ***Salicion albae* Soó 1951**

Vrbova grmišča in gozdovi od nižine do submontanskega pasu na rečnih naplavinah v zmernem pasu Evrope  
Willow scrub and woodlands of lowland to sub-montane river alluvia of temperate Europe

48AA01 7

48AA02 81

48AA03 unpubl. (Šilc)

48AB

<i>Salicetum albae</i> Issler 1926	48AB01	99
<b>Salicion triandrae T. Müller &amp; Görs 1958</b>	48AC	
Vrbova grmišča na najnižjem delu rečnih bregov		
Willow scrub of river banks below levées		
<i>Salicetum triandrae</i> Malcuit ex Noirfalise in Lebrun et al. 1955	48AC01	36
Združbi na nivoju razreda		
Other communities of the class		
<i>Salix purpurea</i> -[ <i>Salicetea purpureae</i> ]	48XX01	13
<i>Salix triandra</i> -[ <i>Salicetea purpureae</i> ]	48XX02	3
<b>Franguletea Doing 1962 nom. conserv. propos.</b>	49	
Vrbov grez in združbe visokih grmišč zahodne in subatlantske srednje Evrope		
Willow carrs and tall-hedge communities of Western and sub-atlantic Central Europe		
<b>Salicetalia auritae Doing 1962 nom. conserv. propos.</b>	49A	
Vrbov grez in združbe visokih grmišč zahodne in subatlantske srednje Evrope		
Willow carrs and tall-hedge communities of Western and sub-atlantic Central Europe		
<b>Salicion cinereae T. Müller &amp; Görs ex Passarge 1961</b>	49AA	
Vrbov grez in združbe visokih grmišč zahodne in subatlantske srednje Evrope		
Willow carr communities of Western Europe and sub-atlantic Central Europe	49AA01	28
<i>Salicetum cinereae</i> Zólyomi 1931	49AA02	1
<i>Frangulo-Salicetum auritae</i> R. Tx. 1937		
<b>Populetea albae Br.-Bl. 1962</b>	50	
Obvodni galerijski gozdovi v evrosibirjski in mediteranski regiji		
Riparian gallery forests of the Eurosiberian and Mediterranean regions		
<b>Fraxinetalia Scamoni et Passarge 1959</b>	50A	
Obvodni gozdovi na poplavnih ravninah na s hranili bogatih aluvialnih tleh v zmernem in borealnem pasu Evrope		
Floodplain riparian forests on nutrient-rich alluvial soils of temperate and boreal Europe		
<b>Alnion incanae Pawłowski in Pawłowski et al. 1928</b>	50AA	
Jelševo-jesenovi in hrastovi obvodni gozdovi na s hranili bogatih aluvialnih tleh v srednji in zahodni Evropi		
Alder-ash and oak riparian floodplain forests on nutrient-rich alluvial soils in Central and Western Europe		
<i>Alnetum incanae</i> Lüdi 1921	50AA01	unpubl. (Šilc)
<i>Lamio orvalae-Alnetum incanae</i> Daksakobler 2010	50AA02	67
<i>Lamio orvalae-Salicetum eleagni</i> Daksakobler et al. ex Daksakobler 2007	50AA03	94
<i>Stellario-Alnetum glutinosae</i> Lohm. 1956	50AA04	12
<i>Piceo abietis-Quercetum roboris</i> (M. Wraber 1969) Marinček 1994	50AA05	10
<i>Carici remotae-Fraxinetum</i> W. Koch 1926 ex Faber 1936	50AA06	unpubl. (Šilc)
<b>Alno-Quercion roboris Horvat 1950</b>	50AB	
Jelševo-hrastovi obvodni gozdovi na s hranili bogatih aluvialnih tleh v zmernem pasu Balkanskega polotoka		

Alder oak riparian floodplain forests on nutrient rich alluvial soil of temperate regions of Balkan Peninsula

<i>Pruno padi-Fraxinetum angustifoliae</i> Čarni et al. 2008 nom. nud.	50AA03	unpubl. (Čarni et al. 2008)
<i>Fraxino-Populetum</i> Jurko 1958	50AA04	98
<i>Fraxino-Ulmctum effusae</i> Slavnić 1952	50AA08	unpubl. (Čarni et al. 2008)
<i>Carici brizoidis-Alnetum glutinosae</i> Horvat 1938	50AB01	7
<i>Leucojo-Fraxinetum angustifoliae</i> Glavač 1959	50AB02	4
<i>Pseudostellario-Quercetum roboris</i> Accetto 1973	50AB03	17
<i>Genisto elatae-Quercetum roboris</i> Horvat 1938	50AB04	unpubl. (Čarni et al. 2008)
<i>Lonicero caprifolii-Quercetum roboris</i> (Rauš 1979) Marinček 1994	50AB06	unpubl. (Marinček 1994)
<i>Aconito variegati-Quercetum roboris</i> Accetto 1999 nom. nud.	50AB07	1
<i>Epimedio-Quercetum roboris</i> Accetto 1999 nom. nud.	50AB08	1

***Alnetea glutinosae* Br.-Bl. et Tx. 1943**

Evropski jelšev grez

European alder carr forests

***Alnetalia glutinosae* R. Tx. 1937**

Evropski jelšev grez

European alder carr forests

***Alnion glutinosae* Malcuit 1929**

Evropski redno poplavljen jelšev grez

European regularly flooded alder carr forests

*Carici elongatae-Alnetum glutinosae* W. Koch 1926

*Alnetum glutinosae* s. lat.

(incl. *Carici randalpiniae-Alnetum* Martinčić 2007 nom. inval.)

50AA03	unpubl. (Čarni et al. 2008)
50AA04	98
50AA08	unpubl. (Čarni et al. 2008)
50AB01	7
50AB02	4
50AB03	17
50AB04	unpubl. (Čarni et al. 2008)
50AB06	unpubl. (Marinček 1994)
50AB07	1
50AB08	1
51	
51A	1
51AA	
51AA01	63
51AA01	12