








# Unveiling unique endemic associations: A contribution to the knowledge of chasmophytic vegetation on the Sorrento Peninsula and Picentini Mountains

Dario La Montagna<sup>1</sup> , Emile Ammann<sup>1</sup>, Francesco Buttarazzi<sup>1</sup>,  
Vito Emanuele Cambria<sup>1</sup> , Lorenzo Caucci<sup>1</sup> , Elisa De Luca<sup>1</sup>,  
Michele De Sanctis<sup>1</sup> , Sara Frasca<sup>2</sup> , Fabio Attorre<sup>1</sup>  & Giuliano Fanelli<sup>1</sup> 

**Key words:** chasmophytic vegetation, Mediterranean, phytogeography, rock vegetation, Southern Italy, syntaxonomy.

**Ključne besede:** hazmofitska vegetacija, sredozemski, fitogeografija, naskalna vegetacija, južna Italija, sintaksonomija.

## Abstract

Sorrento Peninsula and the Picentini Mountains are rich in local endemics and have been well studied taxonomically, but their vegetation, particularly cliff plant assemblages, remains poorly known. This paper presents phytosociological insights on cliff-dwelling communities in these areas. We conducted 28 relevés (8 previously published) and used multivariate analyses to classify them. The bioclimatic context was analyzed using Rivas-Martínez indexes and compared with other Central Mediterranean rock vegetation. We identified three clusters classified into one association and two sub-associations: *Globulario neapolitanae-Loniceretum stabianae typicum*; *Globulario neapolitanae-Loniceretum stabianae globularietosum neapolitanae* subass. nova; and *Diantho virginei-Seselietum polyphylli* ass. nova. This vegetation is referred to a new alliance, *Lonicerion stabianae* all. nova, characterized by an intermediate Mediterranean, temperate, and weakly continental climate. The endemic cliff vegetation in these areas suggests a distinct phytogeographical sector within the Italian Peninsula.

## Izveček

Polotok Sorrento in gorovje Picentini imata bogato endemično floro, ki je bila taksonomsko tudi dobro preučena, njuna vegetacija, predvsem vegetacija klifov, pa je slabo poznana. V članku predstavljamo fitocenološki pogled na rastlinske združbe klifov s teh dveh območij. Naredili smo 28 vegetacijskih popisov (8 je bilo že objavljenih) in jih klasificirali z multivariatnimi metodami. Bioklimatske značilnosti smo analizirali z indeksi po Rivas-Martínezu in primerjali z naskalno vegetacijo srednjega Sredozemlja. Ugotovili smo tri klastre in jih uvrstili v eno asociacijo in dve subasociaciji: *Globulario neapolitanae-Loniceretum stabianae typicum*; *Globulario neapolitanae-Loniceretum stabianae globularietosum neapolitanae* subass. nova; in *Diantho virginei-Seselietum polyphylli* ass. nova. To vegetacijo uvrščamo v novo zvezo *Lonicerion stabianae* all. nova, ki jo označuje vmesna sredozemska, zmerna in slabo kontinentalna klima. Endemična vegetacija klifov v teh območjih nakazuje poseben fitogeografski sektor na italijanskem polotoku.

Corresponding author:

Dario La Montagna

E-mail:

dario.lamontagna@uniroma1.it

Received: 20. 3. 2024

Accepted: 15. 7. 2024



<sup>1</sup> Department of Environmental Biology, Sapienza University of Rome, Rome, Italy

<sup>2</sup> Department of Biology, University of Rome Tor Vergata, Rome, Italy

## Introduction

Chasmophytes are plant species that grow on rocky walls, often characterised by specific adaptations to thrive in extreme environments with limited soil and unique climatic conditions. Moreover, the rocks create conservative habitats that promote the evolution and survival of paleoendemics (Snogerup, 1971; Antonsson, 2012). Therefore, it is not surprising that a significant percentage of Mediterranean endemism is concentrated in chasmophytic vegetation, particularly those in proximity to the sea (Thompson, 2020). Iconic examples of this chasmophytic flora include *Primula palinuri* Petagna, *Eokochia saxicola* (Guss.) Freitag et G.Kadereit, and various species of the *Brassica* and *Centaurea* genera (Pignatti et al., 2017). This notable phytogeographic interest has sparked numerous phytosociological studies (Brullo & Marcenò, 1997; Biondi et al., 2000; Corbetta et al., 2000; Terzi & D'Amico, 2008; Wagensommer, 2017; Di Pietro & Wagensommer, 2008), recently synthesised for the central Mediterranean by Terzi et al. (2018). This review has highlighted the existence of several geographically localised alliances attributable to three orders: *Asplenietalia glandulosi* for the Tyrrhenian coasts, including Liguria, Sicily, and Sardinia; *Centaureo-Campanuletalia* (including *Moltkietalia petreae*) along the Adriatic coasts; and *Onosmetalia frutescentis* in the Eastern Mediterranean.

In Italy, one of the most significant centres of endemic chasmophytes is in the Sorrento Peninsula, western Campania, where especially in the short mountain ranges of Monti Lattari and Monti Picentini, numerous taxa with a very restricted range, some punctiform and generally rare, can be found. Examples include *Lonicera stabiana*, *Globularia cordifolia* subsp. *neapolitana*, *Santolina neapolitana*, *Galium lucidum* subsp. *venustum*, *Centaurea tenorei*, and *Seseli polyphyllum*. Although these species were extensively studied by different botanists (Tenore, 1823; Pasquale, 1875; Lacaita, 1922; Schwarz, 1938; Moraldo et al., 1985; Natali, 1998; Del Guacchio et al., 2020), they are often subjects of taxonomic controversies, partially arising from a limited knowledge of the local populations of these species. Overall, the Sorrento Peninsula remains relatively understudied from a vegetation and ecological standpoint, with some notable exceptions (Guadagno, 1916; Salerno et al., 2007; Fanelli et al., 2020).

In the Sorrento Peninsula, two zones of chasmophytic vegetation can be distinguished: one closer to the sea, where intense anthropogenic impacts have made their presence sporadic, and the other in the mountainous zone, housing the majority of endemics. The focus of this study is the latter vegetation zone.

This study expands on a previous investigation that identified an association dominated by *Lonicera stabiana*, an exceedingly rare stenoendemic species (Salerno et al., 2007). Although the previous work was focused on the description of the associations (Fanelli et al., 2020), it allowed for some initial speculations on the mountainous chasmophytic vegetation of the Sorrento region. This follow-up study aims to 1) review the chasmophytic associations of the Sorrento Peninsula's mountainous area, particularly the rare association *Globulario neapolitanae-Loniceretum stabiana*, and 2) to contextualise these associations at the level of order and alliance within the chasmophytic vegetation of the central Mediterranean.

## Materials and methods

### Study area

The investigated area encompasses two mountainous ranges, one in the Gulf of Naples and the second one in the inland area between Salerno and Avellino provinces (Figure 1). The Gulf of Naples extends over 195 kilometres, spanning from Mount Procida to “Punta Campanella”. Towards the south, there is the Sorrento Peninsula, a modest mountain range jutting out into the sea, which reaches its highest point at Mount Sant'Angelo a Tre Pizzi (1444 m) and only one more notable peak exceeding 1000 meters, i.e. Mount Faito (1131 m).

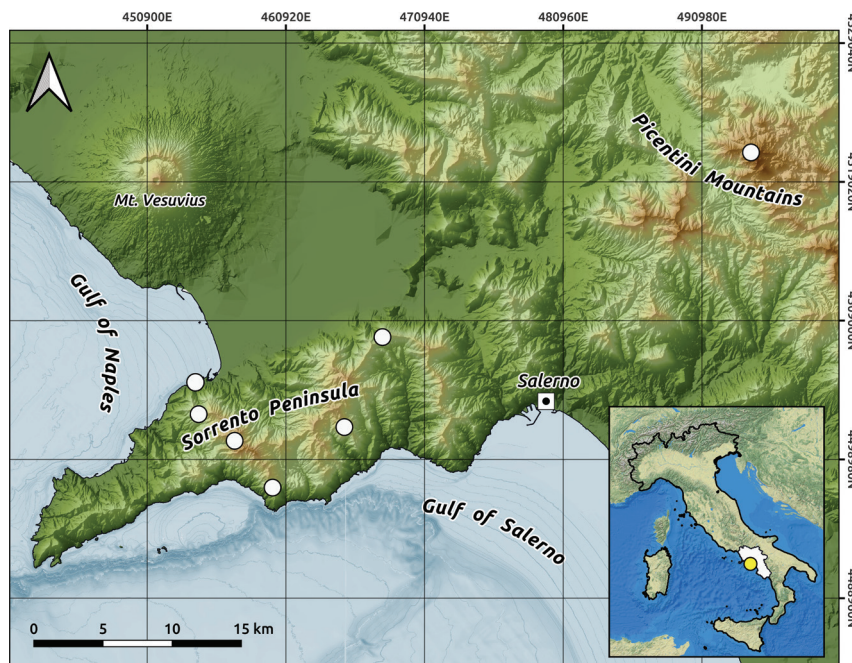
The geology of this mountainous region is dominated by dolomitic steep slopes and cliffs. The geological complexity of the area results from the Apennine orogenesis, followed by an extensional phase that led to the formation of volcanoes along the Tyrrhenian coast. These geological phases are evident in the Sorrento Peninsula, marked by an anti-Apennine thrust, and the volcanic complex of Vesuvius and Campi Flegrei (Casciello et al., 2006).

The Picentini Mountains, located eastward from the Sorrento Peninsula, exhibit a diverse geological and stratigraphic composition. Primarily consisting of folded and faulted sedimentary rocks like limestones and marls, these mountains reflect their origin in a marine environment. The Terminio-Accellica unit is of particular interest as presenting dolomitic limestones and one of the highest peaks of the area (Terminio Mountain, 1806 m a.s.l.; Pappone & Ferranti, 1995). Volcanic activities from the Campanian Volcanic Arc has also left traces of tuffs and lavas, adding one more layer to the region's geological structure (Pescatore et al., 2022).

The whole area can be referred to the Mediterranean macrobioclimate, except for the areas at higher altitudes, such as Mt. Faito and Mt. San Michele in the Sorrento Peninsula, and the whole complex of the Picentini moun-

tains, featured by a temperate thermotype and an upper humid ombrottype climate. The continentality index shows these altitudes as weak semicontinental (Pesaresi et al., 2017).

The Picentini Mountains and Sorrento Peninsula have experienced significant anthropogenic impacts stemming from centuries of deforestation, agricultural practices and other human activities that have remarkably shaped the landscape and increasingly exposed the natural and semi-natural ecosystems to soil erosion and degradation in local ecosystems. In more recent times, urbanisation, unregulated tourism and infrastructure development have exacerbated habitat fragmentation and loss of biodiversity (Cancellieri & Caneva, 2007; Assennato et al., 2022).



**Figure 1:** Map of the study area. White points indicate the places where the relevés have been conducted.

**Slika 1:** Zemljevid preučevanega območja. Bele točke predstavljajo lokacije vegetacijskih popisov.

## Phytosociological survey and data processing

Over two field campaigns in the spring and autumn of 2022, twenty phytosociological relevés were carried out in the Lattari Mountains area, surveying both the Sorrento and Amalfi coasts, as well as the peak of Mount Termino in the Picentini Mountains. Additionally, we added eight relevés from the previous work by Fanelli et al. (2020). The relevés were carried out following the Braun-Blanquet method (Westhoff & van der Maarel, 1980) using the modified Braun-Blanquet scale of abundance (Barkman et al. 1964). The taxonomical nomenclature follows Bartolucci et al. (2018).

The area of relevés is on average from 1 to 5 m<sup>2</sup>, occasionally with much larger relevés to 50 m<sup>2</sup>. Since this could represent potentially a bias, we have carried out a supplementary analysis excluding relevés with area larger than 10 m<sup>2</sup>.

Different types of multivariate analysis methods were employed to process the vegetation data. An ordination analysis through cluster analysis was performed to categorise the relevés into distinct groups. Euclidean distance was used as a dissimilarity measure, and the Unweighted Pair Group Method with Arithmetic Mean (UPGMA) method was employed for clustering. Before selecting the Euclidean distance, we conducted several preliminary tri-

als, finding this measure to be the most effective for distinguishing clusters. The silhouette test and cophenetic distance were used respectively to estimate the optimal number of clusters and as measures of the goodness of the cluster analysis (Kassambara, 2017).

After obtaining the cluster division of the relevés, we proceeded with an Indicator Species Analysis (ISA) (De Cáceres et al., 2010), which revealed the association between species patterns and the selected group combinations. The number of permutations used was 4999.

A Non-Metric Multidimensional Scaling (NMDS) was carried out to visualise the identified groups in a two-dimensional space. Two field-collected environmental variables (Elevation and Slope) and five bioclimatic variables calculated for the Mediterranean region based on Rivas-Martínez et al. (2011) (unpublished data) were overlaid to potentially explain the ordination of the relevés (Table 1). The same distance measure used for cluster analysis was applied to NMDS, with 1000 random starts and a seed set to “123” for analysis repeatability. The “envfit” function with 999 permutations was employed for this purpose. To distinguish the classes identified through multivariate analysis and to provide a statistical rather than merely descriptive value, we conducted Kruskal-Wallis tests between the groups and for each variable, represented using boxplots. All the analyses in this paper were computed with R software (R Core Team, 2021).

**Table 1:** Environmental and bioclimatic variables used for the ordination analyses and to differentiate the different groups.  
**Tabela 1:** Okoljske in bioklimatske spremenljivke, uporabljene v ordinacijski analizi in za ločevanje različnih skupin.

Variable	Description
Elevation	Vertical distance from the sea level
Slope	Vertical change in the elevation determined over a given horizontal distance, expressed in degrees
Tp	Annual Positive Temperature – sum of monthly average temperatures in months where higher than 0 °C
Ic	Continental index
Itc	Compensated thermal index
Io	Umbrothermic index
TpIc	Annual Positive Temperature and Continentiality Index ratio



**Figure 2:** Dendrogram retrieved from the cluster analysis together with species abundances. The three groups are clearly separated by different indicator species.

**Slika 2:** Dendrogram klasterne analize z abudancami vrst. Tri skupine so jasno ločene z različnimi indikatorskimi vrstami.

Finally, we compared our findings with the chasmophytic vegetation of the Mediterranean through a synoptic table, incorporating our relevés with others from the literature and highlighting the different syntaxa. We included vegetation from the Italian Peninsula and Sicily, as well as some associations from Croatia (Trinajstić, 1987; Brullo & Marcenò, 1997; Biondi et al., 2000; Corbetta et al., 2000; Di Pietro & Wagensommer, 2008; Terzi & D’Amico, 2008). The vegetation from the Eastern Mediterranean, Provence, and the Sardo-Corsican region, floristically distinct from the Sorrento Peninsula, was not considered. The orders *Asplenietalia glandulosi*, *Centaureo-Campanuletalia*, and *Onosmetalia frutescentis* were included. We also included the order *Potentilletalia caulescentis* due to the relatively high altitudes of our relevés. In structuring the table we followed Terzi et al. (2018) and Biondi et al. (2000), the latter only for *Potentilletalia caulescentis*.

To further characterise the syntaxa retrieved, we overlapped our relevés on the maps of bioclimatic indexes according to Rivas-Martínez et al. (2011) calculated by Pesaresi et al. (2017) for the entire Italian territory to compare with our ordination results. We considered ombrotype, thermotype, continentality and bioclimate variants.

## Results

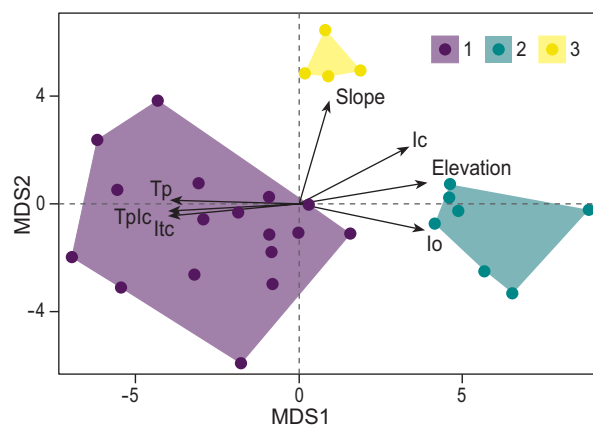
The silhouette test (Suppl. material 1) identified three well-differentiated clusters in the dendrogram (Figure 2 and Table 2). Furthermore, a correlation test between the original distance matrix and the cophenetic distance of the dendrogram, with a value of 0.803, indicates the validity of the ordering (Suppl. material 1). To exclude potential biases to the uneven area of the relevés, a parallel analysis on relevés not larger than 10 m<sup>2</sup> returned exactly the same three clusters (Suppl. Material 1).

The relevé clusters (1, 2, 3), subjected to the analysis of indicator species, correspond with the dominance of *Lonicera stabiana*, *Globularia cordifolia* subsp. *neapolitana* and *Seseli polyphyllum*, for cluster 1, 2 and 3, respectively. For the ISA, *Lonicera stabiana* and *Globularia cordifolia* subsp. *neapolitana* represent the unique indicator species for clusters 1 and 2, while cluster 3 identifies several differential species (Suppl. material 1). NMDS clearly distinguishes the 3 clusters (Figure 3), with a stress value of 0.15.

The biplot of the environmental and bioclimatic variables clearly distinguishes the three clusters. On the first axis, cluster 1 (*Lonicera stabiana* dominant) and cluster 2 (*Globularia cordifolia* subsp. *neapolitana* dominant) are separated according to *Io*, *Itc*, *Tp* and *TpIc*. Cluster 2 and 3 are separated from cluster 1 on the positive side of

*Ic* index. Among all these variables, *Tp*, *Itc*, *Io*, and *TpIc* are significant according to the envfit output. The range of the variables in the three different clusters, with the corresponding Kruskal-Wallis test result, is presented in the boxplots of Figure 4. This figure shows in detail the main differences between identified clusters. In particular cluster 1 (*Globulario-Loniceretum typicum*) and cluster 2 (*Globulario-Loniceretum globularietosum neapolitanae*) are clearly and significantly separated from the cluster 3 (*Diantho-Seselietum*), with the latter found mainly in areas at low elevation, with higher temperatures and lower precipitations than the other two clusters.

According to the synoptic table (Suppl. material 2), a group of species distinguishes the three clusters of vegetation in the Sorrento Peninsula from all others, including *Bromopsis caprina*, *Galium lucidum* subsp. *venustum*, *Centaurea tenorei* and *Santolina neapolitana*, while the species of the Tyrrhenian alliances *Dianthion rupicolae* and *Campanulenion fragilis* are completely absent. Apart from these species, there is a number of differential species belonging for instance, to *Sedo-Scleranthetea*, etc. but we did not analyse such species because in the table derived from literature are considered only true character species and not differential. At the order level, the situation is not entirely clear, but it is evident that the species of *Asplenietalia glandulosi* are completely missing, and there is instead a small number of species of *Centaureo-Campanuletalia* (*Cytisus spinescens*, *Sesleria juncifolia*).



**Figure 3:** NMDS ordination analysis depicting separation of the three different groups and clearly separated with the environmental and bioclimatic variables. *Ic*=Continental index; *Io*=Ombrothermic index; *Itc*=Compensated thermal index; *Tp*=Annual Positive Temperature; *TpIc*=*Tp* & *Ic* ratio.

**Slika 3:** NMDS ordinacija prikazuje ločitev treh različnih skupin, ki so jasno ločene z okoljskimi in bioklimatskimi spremenljivkami. *Ic*=indeks kontinentalnosti; *Io*=ombrotermični indeks; *Itc*=kompenzirani termični indeks; *Tp*=letne pozitivne temperature; *TpIc*=razmerje *Tp* in *Ic*.

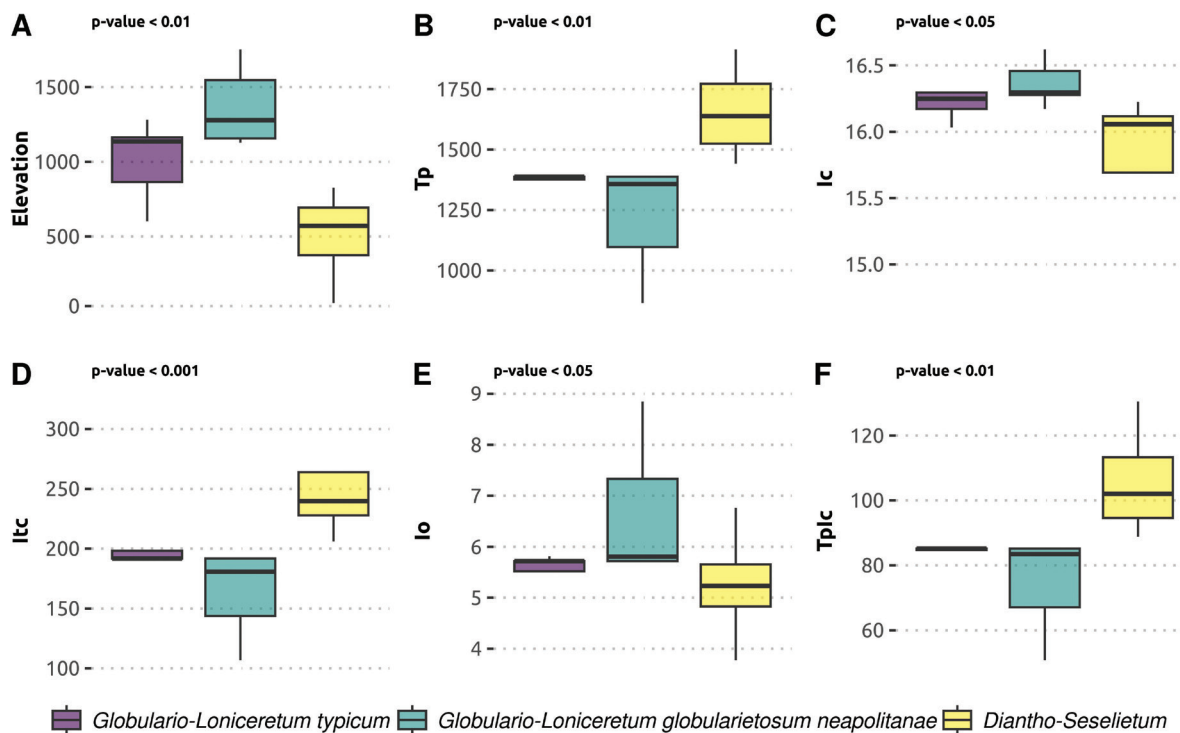
**Table 2:** Phytosociological table of the relevés.

**Tabela 2:** Fitocenološka tabela vegetacijskih popisov.

Relevé n.	1	2	3	4	5	6	7	8	9	10	11
Relevé area (m <sup>2</sup> )	5,0	1,0	8,0	3,0	3,0	1,0	4,0	2,5	1,5	2,0	2,5
Altitude (m a.s.l.)	1163	1132	1153	1166	1170	1281	651	861	861	861	889
Exposure	W-SW	SW	SE	E-SE	SW	W	W-SW	E	E	E	E
Slope (°)	90	80	90	90	90	90	80	85	90	90	90
Cover herb layer (%)	50	70	40	90	80	40	80	60	50	35	70
<b>Char. <i>Globulario neapolitanae-Loniceretum stabianae typicum</i> Fanelli et al. 2020</b>											
<i>Lonicera stabiana</i>	2B	2B	2A	4	3	2B	3	3	3	2A	2A
<b>Char. <i>Globulario neapolitanae-Loniceretum stabianae globularietosum neapolitanae subass. nova</i></b>											
<i>Globularia cordifolia</i> subsp. <i>neapolitana</i>	.	.	.	.	.	.	.	.	.	.	.
<b>Char. <i>Diantho virginei-Seselietum polyphylli</i> ass. nova</b>											
<i>Seseli polyphyllum</i>	.	.	+	.	2A	.	+	1	.	.	.
<i>Dianthus virgineus</i>	.	.	.	.	.	.	+	.	.	.	.
<i>Bromopsis erecta</i>	.	.	.	.	.	.	.	.	.	.	.
<i>Stachys recta</i>	.	.	.	.	.	.	.	.	.	.	.
<i>Micromeria graeca</i> subsp. <i>graeca</i>	.	.	.	.	.	.	.	.	.	.	.
<b>Char. <i>Lonicerion stabianae</i> all. nova</b>											
<i>Bromopsis caprina</i>	.	.	.	.	.	.	.	+	+	.	.
<i>Galium lucidum</i> subsp. <i>venustum</i>	+	.	.	.	+	.	+	.	.	+	.
<i>Centaurea tenorei</i>	.	+	.	.	.	.	.	+	1	1	+
<i>Santolina neapolitana</i>	.	.	+	.	.	.	.	.	.	.	.
<b><i>Centaureo-Campanuletalia</i> Trinajstić 1980</b>											
<i>Cytisus spinescens</i>	.	.	.	.	+	.	.	+	.	.	.
<i>Sesleria juncifolia</i>	+	2B	.	.	.	.	.	.	.	1	2A
<b><i>Asplenietea trichomanis</i> Br.-Bl. in Meier et Br.-Bl. 1934) Oberd. 1977</b>											
<i>Sedum dasyphyllum</i>	.	.	.	.	+	.	.	.	.	.	.
<i>Arabis collina</i>	.	+	.	.	+	+	.	.	.	.	.
<i>Euphorbia spinosa</i>	1	.	.	.	.	.	.	.	2A	.	.
<i>Petrosedum ochroleucum</i>	.	.	.	.	.	.	.	.	.	.	.
<i>Centranthus ruber</i>	.	.	.	.	.	.	.	.	.	.	.
<b>Companions</b>											
<i>Campanula fragilis</i> subsp. <i>fragilis</i>	.	.	+	.	.	.	.	+	1	.	+
<i>Helianthemum nummularium</i> subsp. <i>obscurum</i>	.	+	.	.	.	.	.	.	.	+	.
<i>Leontodon crispus</i>	.	.	.	.	.	+	.	+	+	.	+
<i>Petrosedum rupestre</i>	.	+	.	.	+	.	+	.	.	.	.
<i>Emerus major</i> subsp. <i>emeroides</i>	.	.	.	.	.	.	3	.	.	.	.
<i>Lomelosia crenata</i>	.	.	.	.	+	.	.	.	.	.	.
<i>Edraianthus graminifolius</i>	.	+	.	+	.	.	.	.	.	.	.
<i>Satureja montana</i>	.	.	.	.	.	1	.	.	.	+	1
<i>Brassica villosa</i>	.	.	.	1	2A	.	.	+	.	.	.
<i>Silene multicaulis</i>	.	.	.	.	.	.	.	1	+	.	.
<i>Cynanchica aristata</i> subsp. <i>scabra</i>	.	.	.	.	.	.	.	.	.	.	.
<i>Selaginella denticulata</i>	.	.	.	.	.	.	.	.	+	.	.
<i>Petrorhagia saxifraga</i>	.	.	.	.	+	.	.	.	.	.	.
<i>Viola cassinensis</i> subsp. <i>pseudogracilis</i>	.	.	.	.	.	+	.	.	.	.	.
<i>Brachypodium retusum</i>	.	.	.	.	.	.	.	.	.	.	.
<i>Carex caryophyllea</i>	.	.	.	.	+	.	.	.	.	.	.
<i>Anthyllis montana</i> subsp. <i>jacquinii</i>	.	.	.	.	.	.	.	.	.	.	.
<i>Carex kitaibeliana</i>	.	.	.	.	.	.	.	.	.	.	.
<i>Reichardia picroides</i>	.	.	.	.	.	.	.	.	.	.	.
<i>Centaurea deusta</i>	2B	.	.	.	.	.	.	.	.	.	.
<i>Anthyllis vulneraria</i> subsp. <i>rubriflora</i>	.	.	.	.	.	.	.	.	.	.	.

12	13	14	15	16	*17	18	19	20	21	22	23	*24	25	26	27	*28	
1,0	1,0	1,0	6,0	20,0	15,0	2,0	3,0	1,0	2,0	1,0	0,5	0,5	4,0	5,0	50,0	10,0	
877	602	610	642	1160	1157	1163	1153	1170	1278	1342	1752	1750	649	50	668	826	
NE	SE	N	W	SW	SW	W-SW	SE	SW	W	W	SW	W-SW	W-SW	W	N	SE	
90	80	85	90	90	90	80	90	90	80	60	90	70	70	90	90	90	
70	60	30	15	35	10	80	60	30	20	80	50	80	50	30	20	35	
																	Freq.
3	2A	1	+	2A	1	.	.	.	.	.	.	.	.	.	.	.	61
.	.	.	1	+	+	4	3	3	2B	3	2A	3	.	.	.	.	36
+	+	.	.	.	.	.	.	+	.	+	.	.	3	2B	2A	2A	43
.	.	.	.	.	.	.	.	.	.	.	.	.	+	.	r	+	14
.	.	.	.	.	.	.	.	.	.	.	.	.	1	.	+	+	11
.	.	.	.	.	.	.	.	.	.	.	.	.	.	.	+	+	7
.	.	+	.	.	.	.	.	.	.	.	.	.	+	.	.	+	11
+	+	.	.	.	+	.	1	.	.	.	.	.	+	.	.	.	25
+	.	+	.	+	.	1	1	.	+	.	.	.	+	2A	+	.	46
+	.	.	.	.	.	.	.	.	.	.	.	.	.	.	.	.	21
.	.	.	+	1	.	.	+	.	.	.	.	.	.	.	.	.	14
.	+	.	.	.	.	.	+	.	.	.	.	.	.	.	.	.	14
.	.	.	2M	1	.	2A	.	.	+	+	.	2B	.	.	.	.	36
.	.	.	.	.	.	.	.	.	.	.	.	.	+	.	.	.	7
.	.	.	.	.	.	.	.	+	.	.	.	.	+	.	.	.	18
3	.	.	.	.	.	.	.	.	.	.	.	.	.	.	.	+	14
.	.	.	.	.	.	.	.	.	.	.	.	.	.	.	.	+	4
.	.	.	.	.	.	.	.	.	.	.	.	.	.	+	.	.	4
.	.	+	+	.	1	.	.	.	.	.	+	.	.	1	.	.	32
.	.	.	.	.	.	.	.	1	.	+	2B	+	.	.	.	+	25
.	.	+	+	.	.	.	.	.	.	.	.	.	.	.	.	.	21
.	.	.	.	.	.	+	.	.	+	.	.	.	+	.	.	.	21
1	1	+	.	.	.	+	.	.	.	.	.	.	.	.	.	.	18
.	.	.	+	.	.	.	.	+	+	+	.	.	.	.	.	.	18
.	.	.	.	+	.	.	.	.	+	.	.	.	.	.	.	.	14
.	.	.	.	.	.	.	.	.	.	.	.	.	.	.	.	.	11
.	.	.	.	.	.	.	.	.	.	.	.	.	.	.	.	.	11
.	.	.	.	.	.	.	.	.	.	.	.	+	.	.	.	.	11
.	.	.	+	.	+	.	.	.	.	.	.	.	.	.	.	.	7
+	.	.	.	.	.	.	.	.	.	.	.	.	.	.	.	.	7
.	.	+	.	.	.	.	.	.	.	.	.	.	.	.	.	.	7
.	.	.	.	.	.	.	.	.	1	.	.	.	.	.	.	.	7
.	+	1	.	.	.	.	.	.	.	.	.	.	.	.	.	.	7
.	.	.	.	.	.	.	.	.	+	.	.	.	.	.	.	.	7
.	.	.	.	.	.	.	.	.	.	.	1	+	.	.	.	.	7
.	.	.	.	.	.	.	.	.	.	.	2B	1	.	.	.	.	7
.	.	.	.	.	.	.	.	.	.	.	.	.	+	.	.	+	7
.	.	.	.	.	.	.	.	.	.	.	.	.	.	.	.	.	4
1	.	.	.	.	.	.	.	.	.	.	.	.	.	.	.	.	4

Relevé n.	1	2	3	4	5	6	7	8	9	10	11
<i>Cerastium tomentosum</i>	.	.	.	.	.	.	.	.	+	.	.
<i>Allium tenuiflorum</i>	.	.	.	.	.	.	.	.	+	.	.
<i>Thymelaea tartonraira</i>	.	.	.	.	.	.	.	.	.	.	.
<i>Salvia rosmarinus</i>	.	.	.	.	.	.	.	.	.	.	.
<i>Thapsia meoides</i>	.	.	.	.	.	.	.	.	.	.	.
<i>Centaurea cineraria</i>	.	.	.	.	.	.	.	.	.	.	.
<i>Quercus ilex</i>	.	.	.	.	.	.	.	.	.	.	.
<i>Clematis vitalba</i>	.	.	.	.	.	.	.	.	.	.	.
<i>Micromeria juliana</i>	.	.	.	.	.	.	.	.	.	.	.
<i>Coronilla valentina</i>	.	.	.	.	.	.	.	.	.	.	.
<i>Cribmum maritimum</i>	.	.	.	.	.	.	.	.	.	.	.
<i>Sixalix atropurpurea</i>	.	.	.	.	.	.	.	.	.	.	.
<i>Plantago lanceolata</i>	.	.	.	.	.	.	.	.	.	.	.
<i>Crupina vulgaris</i>	.	.	.	.	.	.	.	.	.	.	.
<i>Avena barbata</i>	.	.	.	.	.	.	.	.	.	.	.
<i>Allium subhirsutum</i>	.	.	.	.	.	.	.	.	.	.	.
<i>Onobrychis alba</i> subsp. <i>alba</i>	.	.	.	.	.	.	.	.	.	.	.
<i>Helianthemum oelandicum</i> subsp. <i>incanum</i>	.	.	.	.	.	.	.	.	.	.	.
<i>Carex macrolepis</i>	.	.	.	.	.	.	.	.	.	.	.
<i>Siler montanum</i> subsp. <i>garganicum</i>	.	.	.	.	.	.	.	.	.	.	.
<i>Saxifraga marginata</i>	.	.	.	.	.	.	.	.	.	.	.
<i>Saxifraga callosa</i> subsp. <i>callosa</i>	.	.	.	.	.	.	.	.	.	.	.



**Figure 4:** Boxplots depicting the significant differences between the three syntaxa based on the environmental and bioclimatic variables. On top left there are the *p-values*. A Elevation; B Annual Positive Temperature; C Continentality index; D Compensated thermal index; E Ombrothermic index; F Tp and Ic ratio.

**Slika 4:** Škatle z okvirji prikazujejo statistično značilne razlike med tremi sintaksami na osnovi okoljskih in bioklimatskih spremenljivk. Levo zgoraj so prikazane *p-vrednosti*. A Nadmorska višina; B letne pozitivne temperature; C indeks kontinentalnosti; D kompenzirani termični indeks; E ombrotermični indeks; F TpIc=razmerje Tp in Ic.





*Sesleria juncifolia* and *Edraianthus graminifolius* might be present with specific forms different from those in the Central Apennines (Fanelli et al., 2020). A study by Surina et al. (2014) has shown that populations of *Edraianthus graminifolius* from the Central Apennines are genetically distinct from those in Southern Italy. All these species allow for delineating a distinct alliance, *Lonicerion stabianae*, endemic to the Sorrento Peninsula and with a small exclave in the Picentini Mountains, where *Globularia cordifolia* subsp. *neapolitana* is present. These species represent true character species and are as such indicated in the synoptic table. We refrained from indicating differential species because a rigorous assessment of such species requires revision of the chasmophytic vegetation of the central Mediterranean, which is outside the aim of this paper, although a number of differential species are probably present, distinguishing the chasmophytic vegetation of the Sorrento Peninsula and Picentini from other chasmophytic vegetation of the Central Mediterranean but which are otherwise shared with dry grasslands.

A possible alternative hypothesis to the description of a new alliance is that the vegetation described in this pa-

per falls within the *Dianthion rupicolae*, but this remains implausible for ecological, floristic, and phytogeographic reasons. As evident from the synoptic table, species from *Dianthion rupicolae* are virtually non-existent in the relevés of *Lonicerion stabianae*. If the alliances were synonymous, a substantial presence of *Dianthion rupicolae* species would be expected, given the geographical proximity to areas associated with this alliance. Indeed, ecologically, *Lonicerion stabianae* is distinguished through two features: it develops at relatively high altitudes (about 1000 m) with a temperate and weakly continental climate and growth on dolomitic substrates (Fanelli et al., 2020). *Dianthion rupicolae* develops in a thermo- to meso-mediterranean climate, with much more maritime conditions, and generally on non-dolomitic substrates (Terzi et al., 2018). The bioclimatic analysis shows that the alliance *Lonicerion stabianae* is characterised by a weakly continental climate and a predominantly temperate thermotype, which ecologically isolates this alliance within xerophytic cliff vegetation (Terzi et al., 2018). In this context, *Diantho virginei-Seselietum polyphylli* occupies a somewhat intermediate position with *Dianthion*

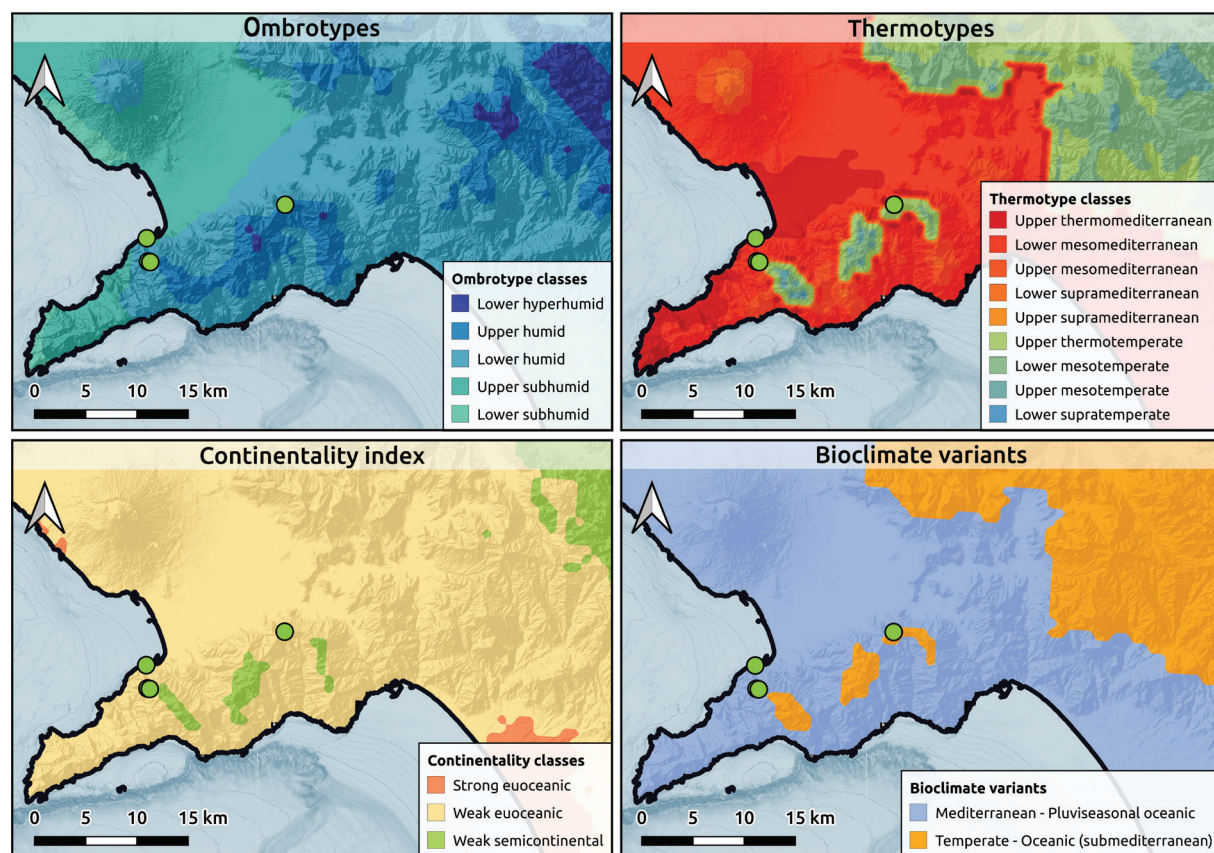


Figure 5: Bioclimatic maps from Pesaresi et al. (2017) for *Diantho virginei-Seselietum polyphylli* ass. nova.

Slika 5: Bioklimatski zemljevidi iz Pesaresi et al. (2017) za *Diantho virginei-Seselietum polyphylli* ass. nova.

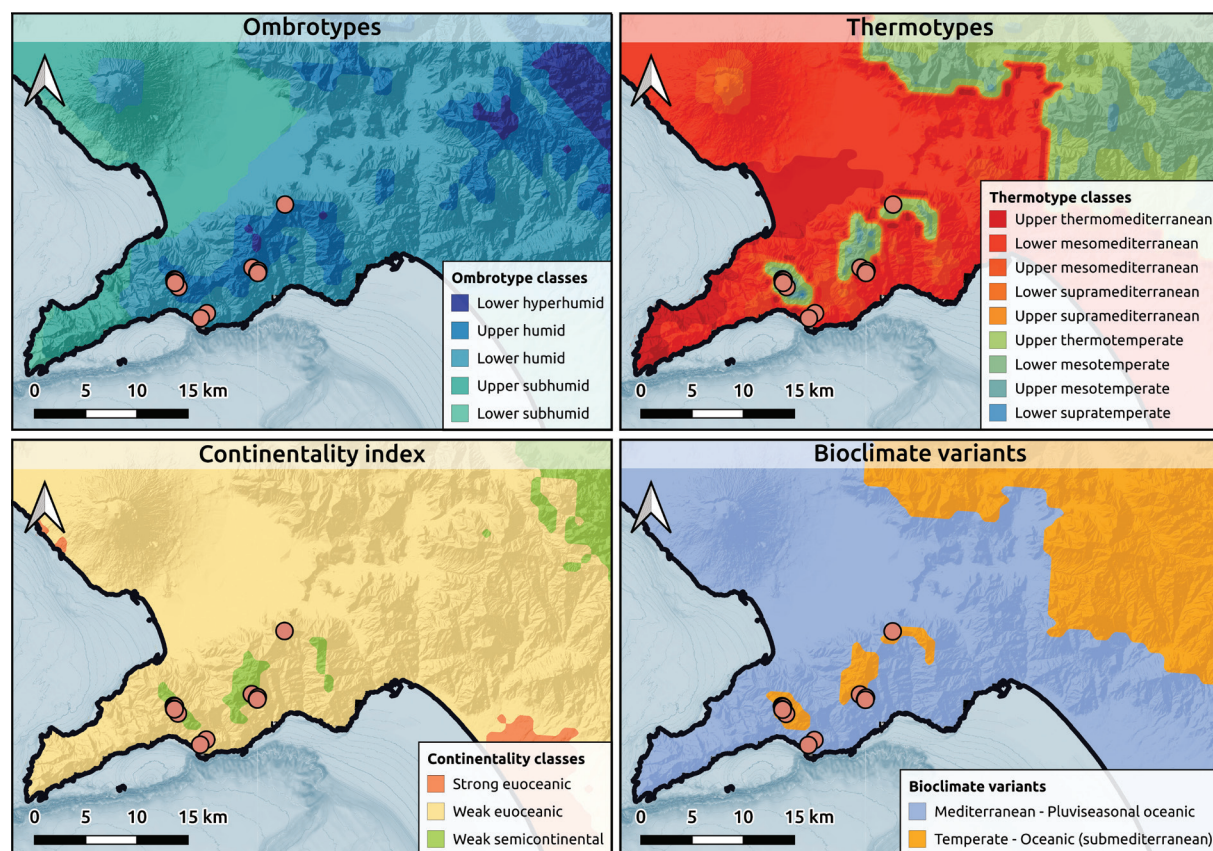


Figure 6: Bioclimatic maps from Pesaresi et al. (2017) for *Globulario neapolitanae-Lonicereturum stabianae typicum*.

Slika 6: Bioklimatski zemljevidi iz Pesaresi et al. (2017) za *Globulario neapolitanae-Lonicereturum stabianae typicum*.

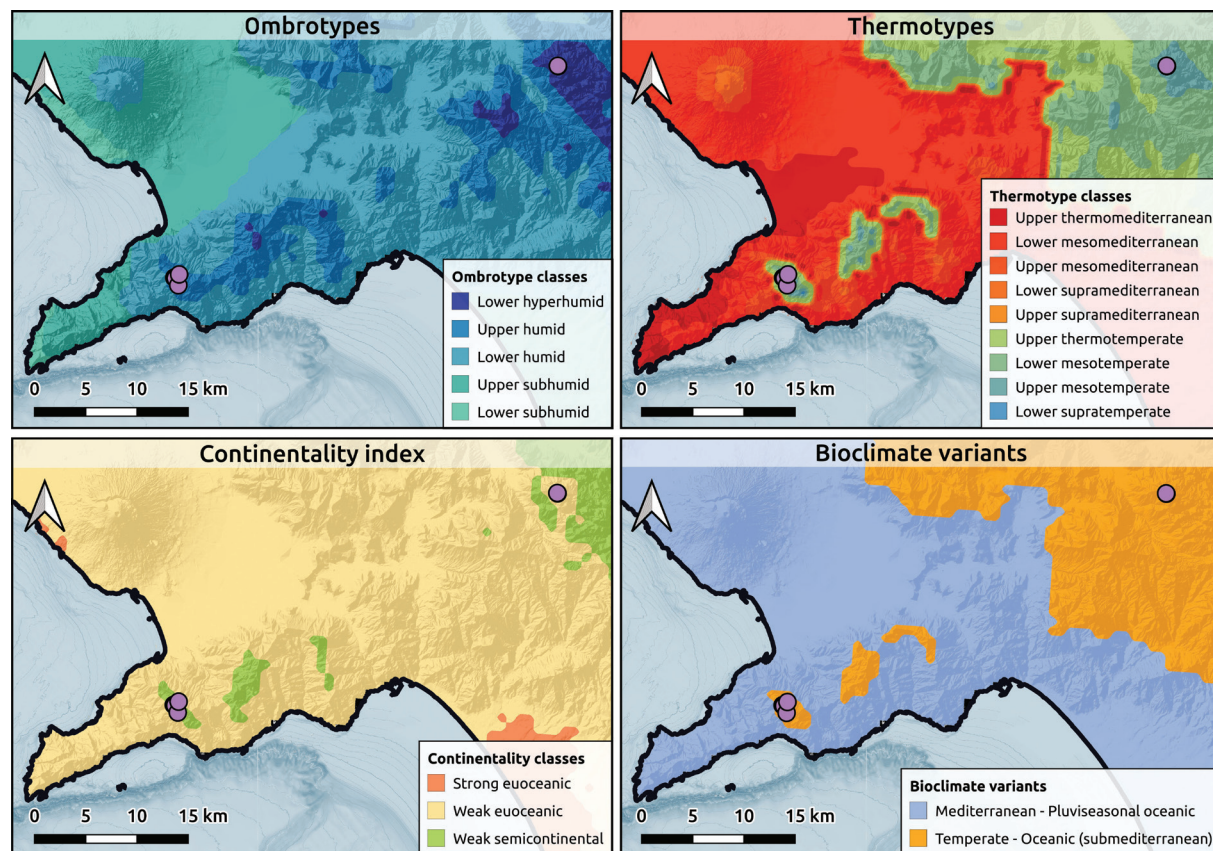
*rupicolae*. In fact, *Seseli polyphyllum* occurs sometimes with low frequencies in a few associations of *Dianthion rupicolae*.

The synoptic table does not reveal any affinity with *Asplenietalia glandulosi* at the order level, while a moderate affinity with the Adriatic *Centaureo-Campanuletalia* appears. Species from *Asplenietalia glandulosi* are absent, but two species of *Centaureo-Campanuletalia*, in particular *Cytisus spinescens* and *Sesleria juncifolia*, are present. This is somewhat surprising, since *Asplenietalia glandulosi* is the order of central Mediterranean chasmophytic vegetation, whereas *Centaureo-Campanuletalia* is fundamentally distributed in the Adriatic.

Only a few species of *Centaureo-Campanuletalia* were encountered in our surveys, but this could be explained by the very marginal position of the Sorrento Peninsula for the main area of *Centaureo-Campanuletalia*. This is not surprising since there is a strong disjunction between the Sorrento Peninsula and the main area of *Centaureo-Campanuletalia* in the Adria. In summary, the affinities of

the mountainous zone of the Sorrento Peninsula seem to be eastern, while the lower zones have a distinctly more western character.

Our results are based on the analysis of the synoptic table and bioclimatic characterisation. A numerical analysis of cliff vegetation in the central Mediterranean could further support these findings, as such analyses are now relatively easy thanks to the integration of large databases (Chytrý et al., 2016). However, this type of analysis has already been conducted by Terzi et al. (2018), and adding relevés from the Sorrento Peninsula would likely be redundant. Moreover, the scope of our study is to describe the vegetation of the Sorrento Peninsula and align it within the framework of known vegetation as presented in the literature. This approach follows the standard method in phytosociology, which begins with a detailed description of the vegetation at the local scale and, only after a substantial amount of data has been collected, proceeds to numerical analysis and revision (e.g., Bonari et al., 2020).



**Figure 7:** Bioclimatic maps from Pesaresi et al. (2017) for *Globulario neapolitanae-Loniceretum stabianaeglobularietosum neapolitanae* subass. nova. **Slika 7:** Bioklimatski zemljevidi iz Pesaresi et al. (2017) za *Globulario neapolitanae-Loniceretum stabianaeglobularietosum neapolitanae* subass. nova.

In conclusion, we propose the following syntaxonomical scheme:

*Globulario neapolitanae-Loniceretum stabianaeglobularietosum neapolitanae* subass. nova hoc loco (Holotypus n. 24)

*Globulario neapolitanae-Loniceretum stabianaetypicum* Fanelli et al. 2020

*Diantho virginei-Seselietum polyphylli* ass. nova hoc loco (Holotypus n. 28) Notes:

*Lonicerion stabianaee* all. nova hoc loco (Holotypus *Globulario neapolitanae-Loniceretum stabianaee*).

*Centaureo-Campanuletalia* Trinajstić 1980

*Asplenietea trichomanis* Br.-Bl. in Meier et Br.-Bl. 1934) Oberd. 1977

## Conclusion

The Sorrento Peninsula represents a significant centre of endemism, which Italian botanists have somewhat overlooked from a biogeographic perspective, with a few exceptions (Guadagno, 1916; Salerno et al., 2007). Our proposal to describe an alliance for this restricted bioge-

graphic sector, aimed at integrating renewed ecological and phytogeographic foundations, successfully increasing the number of relevés for *Globulario neapolitanae-Loniceretum stabianaee* and identifying the subassociation *globularietosum* also in the Picentini Mountains.

In the standard classification of the ecoregions of Italy (Blasi et al., 2018), the Sorrento Peninsula is not distinguished from the Cilento subsection, which has a very different floristic setting, with iconic species such as *Eo-kochia saxicola*, *Limonium remotispiculum* and *Primula palinuri*. The main distinction between the Sorrento Peninsula and Cilento is climatic, with the latter showing a mainly a thermo-mediterranean climate.

The study’s findings contributed to drawing attention to the uniqueness of this peculiar territory. The Sorrento Peninsula is an island of endemism comparable to other Italian plant diversity hotspots (e.g. the Apuan Alps, Belluno Dolomites, Aspromonte, Etna, etc.), which, despite a very limited size, hosts a considerable number of rare species.

According to our analysis, the Sorrento Peninsula should have more affinities with the Adriatic ranges than with the western Mediterranean or the Tyrrhenian do-

mains. This is relatively not surprising when considering the climate of the Sorrento Peninsula. Unlike neighbouring regions, the highest tops of Sorrento Peninsula is more exposed to the winter currents of cold air coming from the Balkan spots, as only partially shielded by the Picentini Mountains (Capozzi et al., 2023). This is reflected in the weakly continental bioclimate classification of the higher altitudes of the Lattari and Picentini Mountains (Pesaresi et al., 2017). Conversely, in summer, the very close maritime currents, especially in the lower zones, ensure a milder climate enabling the plants to flourish. A more detailed study of the lower cliff zone would be interesting, although made difficult by the extensive urbanisation of the area.

### Data availability

All the relevés presented in this paper will be available on the EVA database and/or by request to the corresponding author.








### Author contributions

DLM and GF conceived the research. DLM, MDS, LC, EA, FB, EDL, SF and GF collected the data. DLM, LC, and GF analysed the data. FA and GF supervised the work. All authors contributed to the writing of the manuscript with a final review by DLM, VEC, MDS, FA and GF. All authors contributed to the article and approved the submitted version.

## Acknowledgements

We would like to thank Carlo Fratarcangeli for the help in processing the data.

### ORCID iDs

Dario La Montagna  <https://orcid.org/0000-0002-7124-493X>  
 Vito Emanuele Cambria  <https://orcid.org/0009-0003-0481-6368>  
 Lorenzo Caucci  <https://orcid.org/0009-0000-9211-3587>  
 Michele De Sanctis  <https://orcid.org/0000-0002-7280-6199>  
 Sara Frasca  <https://orcid.org/0009-0007-8164-640X>  
 Fabio Attorre  <https://orcid.org/0000-0002-7744-2195>  
 Giuliano Fanelli  <https://orcid.org/0000-0002-3143-1212>

## References

Antonsson, H. (2012). Plant species composition and diversity in cliff and mountain ecosystems. Ph.D. thesis, University of Gothenburg, Gothenburg, SE. Available from: <https://gupea.ub.gu.se/handle/2077/30092>

Assennato, F., Smiraglia, D., Cavalli, A., Congedo, L., Giuliani, C., Riitano, N., Strollo, A., & Munafo, M. (2022). The Impact of Urbanization on Land: A Biophysical-Based Assessment of Ecosystem Services Loss Supported by Remote Sensed Indicators. *Land*, 11(2), 236. <https://doi.org/10.3390/land11020236>

Barkman, J.J., Doing, H., & Segal, S. (1964). Kritische Bemerkungen und Vorschläge zur quantitativen Vegetationsanalyse. *Acta Botanica Neerlandica*, 13, 394–419.

Bartolucci, F., Peruzzi, L., Galasso, G., Albano, A., Alessandrini, A., Ardenghi, N.M.G., Astuti, G., Bacchetta, G., Ballelli, S., Banfi, E., Barberis, G., Bernardo, L., Bouvet, D., Bovio, M., Cecchi, L., Di Pietro, R., Domina, G., Fascetti, S., Fenu, G., Festi, F., Foggi, B., Gallo, L., Gottschlich, G., Gubellini, L., Iamonic, D., Iberite, M., Jiménez-Mejías, P., Lattanzi, E., Marchetti, D., Martinetto, E., Masin, R.R., Medagli, P., Passalacqua, N.G., Peccenini, S., Pennesi, R., Pierini, B., Poldini, L., Prosser, F., Raimondo, F.M., Roma-Marzio, F., Rosati, L., Santangelo, A., Scoppola, A., Scortegagna, S., Selvaggi, A., Selvi, F., Soldano, A., Stinca, A., Wagensommer, R.P., Wilhelm, T., & Conti, F. (2018). An updated checklist of the vascular flora native to Italy. *Plant Biosystems*, 152(2), 179–303. <https://doi.org/10.1080/11263504.2017.1419996>

Biondi, E., Casavecchia, S., & Zuccarello, V. (2000). The *Potentilletalia caulescentis* Br.-Bl. in Br.-Bl. & Jenny 1926 order in Italy. *Colloques Phytosociologiques*, 27, 105–122.

Blasi, C., Capotorti, G., Copiz, R., Guida, D., Mollo, B., Smiraglia, D., & Zavattero, L. (2018). Terrestrial Ecoregions of Italy: Map and Explanatory notes. Global Map S.r.l.

Bonari, G., Fernández-González, F., Çoban, S., Monteiro-Henriques, T., Bergmeier, E., Didukh, Y.P., Xystrakis, F., Angiolini, C., Chytrý, K., Acosta, A.T.R., Agrillo, E., Costa, J.C., Danihelka, J., Hennekens, S.M., Kavgacı, A., Knollová, I., Neto, C.S., Sağlam, C., Škvorec, Ž., Tichý, L., Chytrý, M., & Ewald, J. (2021). Classification of the Mediterranean lowland to submontane pine forest vegetation. *Applied Vegetation Science*, 24, e12544 <https://doi.org/10.1111/avsc.v24.110.1111/avsc.12544>

Brullo, S., & Marcenò, C. (1979). *Dianthion rupicolae* nouvelle alliance sud-tyrrhénienne des *Asplenietalia glandulosi*. *Documents Phytosociologiques*, 4, 131–146.

Cancellieri, L., & Caneva, G. (2007). Il paesaggio vegetale della Costa d'Amalfi [The vegetation landscape of the Amalfi coast]. Ed. Gangemi, Rome, IT, 206 pp.

Cancellieri, L., Caneva, G., & Cutini, M. (2017). Phytosociology and ecology of the Mediterranean forests ecosystems in the Amalfi Coast (Monti Lattari, Italy). *Rendiconti Lincei*, 28, 651–671. <https://doi.org/10.1007/s12210-017-0635-x>

Capozzi, V., Annella, C., & Budillon, G. (2023). Classification of daily heavy precipitation patterns and associated synoptic types in the Campania Region (southern Italy). *Atmospheric Research*, 289, 106781. <https://doi.org/10.1016/j.atmosres.2023.106781>

Caputo, G., La Valva, V., Nazzaro, R., & Ricciardi, M. (1989). La flora della Penisola Sorrentina (Campania) [Flora of Sorrento Peninsula (Campania)]. *Delpinoa*, 31-32, 3–97.

Chytrý, M., Hennekens, S.M., Jiménez-Alfaro, B., Knollová, I., Dengler, J., Jansen, F., Landucci, F., Schaminée, J.H.J., Ačić, S., Agrillo, E., Ambarli, D., Angelini, P., Apostolova, I., Attorre, F., Berg, C., Bergmeier, E., Biurrun, I., Botta-Dukát, Z., Brisse, H., Campos, J.A., Carlón, L., Čarni, A., Casella, L., Csiky, J., Čuřterevska, R., Dajić Stevanović, Z., Danihelka, J., De Bie, E., de Ruffray, P., De Sanctis, M., Dickoré, W.B., Dimopoulos, P., Dubyna, D., Dziuba, T., Ejrnæs, R., Ermakov, N., Ewald, J., Fanelli, G., Fernández-González, F., FitzPatrick, Ú., Font, X., García-Mijangos, I., Gavilán, R.G., Golub, V., Guarino, R., Haveman, R., Indreica, A., Işık Gürsoy, D., Jandt, U., Janssen, J.A.M., Jiroušek, M., Kačák, Z., Kavgacı, A., Kleikamp, M., Kolomiychuk, V., Krstivojević Čuk, M., Krstonošić, D., Kuzemko, A.,

- Lenoir, J., Lysenko, T., Marcenò, C., Martynenko, V., Michalcová, D., Moeslund, J.E., Onyshchenko, V., Pedashenko, H., Pérez-Haase, A., Peterka, T., Prokhorov, V., Rašomavičius, V., Rodríguez-Rojo, M.P., Rodwell, J.S., Rogova, T., Ruprecht, E., Rūsiņa, S., Seidler, G., Šibík, J., Šilc, U., Škvorc, Z., Sopotlieva, D., Stančić, Z., Svenning, J.-C., Swacha, G., Tsiripidis, I., Turtureanu, P.D., Uğurlu, E., Uogintas, D., Valachovič, M., Vashenyak, Y., Vassilev, K., Venanzoni, R., Virtanen, R., Weekes, L., Willner, W., Wohlgemuth, T., & Yamalov, S. (2016). European Vegetation Archive (EVA): an integrated database of European vegetation plots. *Applied Vegetation Science*, 19, 173–180. <https://doi.org/10.1111/avsc.12191>
- Corbetta, F., Frattaroli, A.R., Ciaschetti, G., & Pirone, G. (2000). Some aspects of the chasmophytic vegetation in the Cilento-Vallo di Diano National Park (Campania, Italy). *Acta Botanica Croatica*, 59(1), 43–53.
- De Cáceres, M., Legendre, P., & Moretti, M. (2010). Improving indicator species analysis by combining groups of sites. *Oikos*, 119(10), 1674–1684. <https://doi.org/10.1111/j.1600-0706.2010.18334.x>
- Del Guacchio, E., Innangi, M., Giacò, A., Peruzzi, L., & Caputo, P. (2020). Taxa endemic to Campania (southern Italy): nomenclatural and taxonomic notes. *Phytotaxa*, 449(3), 217–231. <https://doi.org/10.11646/phytotaxa.449.3.2>
- Di Pietro, R., & Wagensommer, R.P. (2008). Analisi fitosociologica su alcune specie rare e/o minacciate del Parco Nazionale del Gargano (Italia centro-meridionale) e considerazioni sintassonomiche sulle comunità casmofitiche della Puglia [Phytosociological analysis on some rare species and/or threatened of Gargano National Park (Southern-Central Italy) a syntaxonomical considerations on chasmophytic communities of Puglia]. *Fitosociologia*, 45(1), 177–200.
- Fanelli, G., La Montagna, D., Attorre, F., De Sanctis, M., & Masucci, P. (2022). Phytosociology and taxonomic notes on some endemic-rich associations of the Naples Gulf. *Hacquetia*, 21(1), 1–14.
- Guadagno, M. (1916). La vegetazione della Penisola Sorrentina (Parte I, II, III) [Vegetation of Sorrento Peninsula (Part I, II, III)]. *Bullettino dell'Orto Botanico di Napoli*, 5, 133–178
- Kassambara, A. (2017). *Practical guide to cluster analysis in R: Unsupervised machine learning* (Vol. 1). Sthda.
- Lacaita, C. (1922). Piante italiane critiche o rare [Critical or rare Italian plants]. *Nuovo Giornale Botanico Italiano nuova serie*, 29(1–4), 174–194.
- Moraldo, B., La Valva, V., Ricciardi, M., & Caputo, G. (1985). La Flora dei Monti Picentini (Campania) [Flora of Picentini Mountains (Campania)]. *Delpinoa*, 27–28, 59–148.
- Natali, A. (1998). Le groupe *Galium lucidum* (Rubiaceae) dans le domaine cyrno-sarde. *Candollea*, 53(2), 484–488.
- Pasquale, G.A. (1875). Su di una nuova specie di *Lonicera* [On a new species of *Lonicera*]. *Rendiconto della Regia Accademia delle Scienze fisiche e matematiche*, 14, 142–143.
- Pesaresi, S., Biondi, E., & Casavecchia, S. (2017). Bioclimates of Italy. *Journal of Maps*, 13(2), 955–960. <https://doi.org/10.1080/17445647.2017.1413017>
- Pescatore, T.S., Pinto, F., Giano, S.I., Guadagno, F.M., & Lupo, G. (2022). *Note illustrative della Carta Geologica d'Italia alla scala 1: 50.000: Foglio 449 Avellino*. CARG, Regione Campania.
- Pignatti, S., Guarino, R., & La Rosa, M. (2017). *Flora d'Italia* (Vol. 1–4). Edagricole, Milano.
- R Core Team (2021). R: A language and environment for statistical computing. R Foundation for Statistical Computing, Vienna, Austria. URL <https://www.R-project.org/>.
- Rivas-Martínez, S., Sáenz, S.R., & Penas, A. (2011). Worldwide bioclimatic classification system. *Global Geobotany*, 1, 1–634. <https://doi.org/10.5616/gg110001>
- Salerno, G., Cancellieri, L., Ceschin, S., Lucchese, F., & Caneva, G. (2007). La flora e le emergenze floristiche [Flora and floristic emergencies]. In: Caneva, Cancellieri (Eds.), *Il paesaggio vegetale della costa d'Amalfi*. Cangemi Editore, Roma.
- Schwarz, O. (1938). Die Gattung *Globularia* [The Genus *Globularia*]. *Botanische Jahrbücher für Systematik, Pflanzengeschichte und Pflanzengeographie* 69: 318–373.
- Snogerup, S. (1971). Evolutionary and plant geographical aspects of chasmophytic communities. In: Davis, Harper, Hedge, (Eds.), *Plant Life of South West Asia*. Royal Botanic Garden, Edinburgh.
- Surina, B., Schneeweiss, G.M., Glasnović, P., & Schönswetter, P. (2014). Testing the efficiency of nested barriers to dispersal in the Mediterranean high mountain plant *Edraianthus graminifolius* (Campanulaceae). *Molecular Ecology*, 23, 2861–2875. <https://doi.org/10.1111/mec.12779>
- Tenore, M. (1823). *Flora medica universale, e flore particolare della provincia di Napoli* [Universal medical flora, and particular flora of the province of Naples]. *Giornale Enciclopedico di Napoli*, Napoli.
- Terzi, M. & D'Amico, F.S. (2008). Chasmophytic vegetation of the class *Asplenietea trichomanis* in south-eastern Italy. *Acta Botanica Croatica*, 67(2), 147–174.
- Terzi, M., Jasprica, N., Caković, D., & Di Pietro, R. (2018). Revision of the central Mediterranean xerothermic cliff vegetation. *Applied Vegetation Science*, 21, 514–532. <https://doi.org/10.1111/avsc.12386>
- Thompson, J.D. (2020). *Plant evolution in the Mediterranean: insights for conservation*. Oxford University Press, USA.
- Trinajstić, I. (1987). Sintaksonomski pregled biljnih zajednica planine Biokovo [Syntaxonomic survey of the plant communities of the Mt. Biokovo]. *Acta Biokovica*, 4, 143–174.
- Wagensommer, R.P. (2017). Phytosociological investigation on the thermo-chasmophilous vegetation of the Eastern Mediterranean territories. Ph.D. thesis, University of Catania, Catania, IT. Available from: <http://hdl.handle.net/10761/3718>.

## Appendix 1

- Other syntaxa quoted in the text with authors:  
*Centaureo-Campanulenion seselietosum polyphylli* Brullo & Marcenò 1979  
*Centaureo-Campanuletum fragilis typicum* Brullo & Marcenò 1979  
*Campalunenion fragilis* Terzi et al. 2018  
*Dianthion rupicolae* S. Brullo et Marcenò 1979  
*Asplenietalia glandulosi* Br.-Bl. in Meier et Br.-Bl. 1934  
*Centaureo-Campanuletalia* Trinajstić 1987  
*Onosmetalia frutescentis* Quezel 1968  
*Potentilletalia caulescentis* Br.-Bl. in Br.-Bl. et Jenny 1926  
*Moltkietalia petraeae* Lakušić 1968