

Vranje near Sevnica: A Late Roman Settlement in the Light of Certain Pottery Finds

Timotej KNIFIC

Izvleček

Avtor predstavlja raziskovanja naselbine Ajdovski gradec nad Vranjem pri Sevnici v Sloveniji. V prvem delu podaja zgodovino raziskav najdišča, v drugem pa se posveča problematiki langobardske, zgodnjebizantinske in lokalne grobe poznoantične lončenine v Sloveniji. Na osnovi teh najdb posredno osvetljuje zgodovinsko ozadje, ki je botrovalo premenam v naselbini.

Abstract

This article presents the results of excavations at the settlement of Ajdovski gradec above Vranje near Sevnica in Slovenia. The first section discusses the history of research at this site, whilst the second section considers Lombard, Early Byzantine and local late Roman pottery in Slovenia. The historical background of the settlement is indirectly illuminated through these finds.

I.

Approximately twenty upland settlements, dated to the 5th and 6th centuries AD, have been found in Slovenia in the last 25 years. Their remains, located on naturally defensible hilltops, extend from the Vipava valley in the west to Kozjansko in the east (*Fig. 1*). The majority of these settlements are still poorly researched, known in most cases from the characteristic configurations of the land and from stray finds, whilst extensive archaeological excavation has only rarely been undertaken (Ciglencčki 1987). The most important of these sites (in terms of the extent of excavation) is that of Ajdovski gradec above Vranje near Sevnica, which has been conserved as an archaeological park (*Fig. 2*; Knific 1991, 19-23).

Ajdovski gradec is an elongated hill above the valley of the Vranje stream. The settlement is hidden behind Veliki vrh in the middle of a fertile region, and is only 4 km from the formerly navigable river Sava

(*Fig. 3*). Local people had already discovered a Roman sarcophagus, composed of two earlier stone urns, on the hill in 1811 (Suppantšitsch 1818, 130-135). As finds once again came to light as a result of the activities of treasure hunters towards the end of the 19th century, the conservator Emanuel Riedl intervened and undertook the first archaeological excavations at Ajdovski gradec from 1901 to 1905 (Riedl, Cuntz 1910). Inscriptions and many small finds were discovered, and they also partially excavated the foundations of stone-walled structures and plotted the course of the defensive wall around the settlement.

The image of Ajdovski gradec was essentially changed and supplemented only after 1970, when new excavations by the National Museum of Ljubljana began. The excavations continued with some interruptions up to 1990. They were led by the director of the Museum, Dr. Peter Petru, up to 1983, after which the excavations were led by the author (Knific 1986). Valuable cooperation was provided in the first years

The history of research and the more recent discoveries at Ajdovski gradec above Vranje near Sevnica was presented by the author at the archaeological conference on "Late Roman Upland Fortifications", held in October 1993 in Regensburg, Germany. I have extended this paper for publication in *Arheološki vestnik*, mainly in the second section which discusses certain pottery. The drawings (*Pl. 1-7*, and *Figs. 1, 3, 4, 15, 17*) were made by Dragica Knific Lunder (Institute of Archaeology, ZRC SAZU, Ljubljana), the photographs by Tomaž Lauko (National Museum, Ljubljana; *Pl. 8-12, Fig. 16*), Boris Vičič (Regional Office for the Protection of the Natural and Cultural Heritage, Ljubljana, *Figs. 5-10*), and T. Knific (*Figs. 2, 11-14*). The article was translated into English by Dr. Philip Mason (Office for the

Protection of the Natural and Cultural Heritage, Novo mesto) and proof-read by Barbara Smith-Demo (Zagreb). The material - often still unpublished - was made available to me by my colleagues Alma Baydek (Museum of the Karst Region, Postojna), Polona Bitenc, Dr. Janka Istenič, and Eva Kocuvan (all from the National Museum, Ljubljana), Dr. Slavko Ciglencčki and Dr. Jana Horvat (both from the Institute of Archaeology, ZRC SAZU, Ljubljana), Radovan Cunja (Regional Museum, Koper), Irena Mimik Prezelj (Department of Archaeology, Faculty of Arts, Ljubljana), Darja Pirkmajer (Regional Museum, Celje), Milan Sagadin (Office for the Preservation of the Natural and Cultural Heritage, Kranj) and Boris Vičič (mentioned above). I would like to thank all of them for their efforts and for access to the material.

by a team from the Institut für Vor- und Frühgeschichte in Munich under the direction of Dr. Thilo Ulbert (Petru, Ulbert 1975). The excavations were paralleled by conservation work from the very start, so that all discovered architectural remains have been preserved.

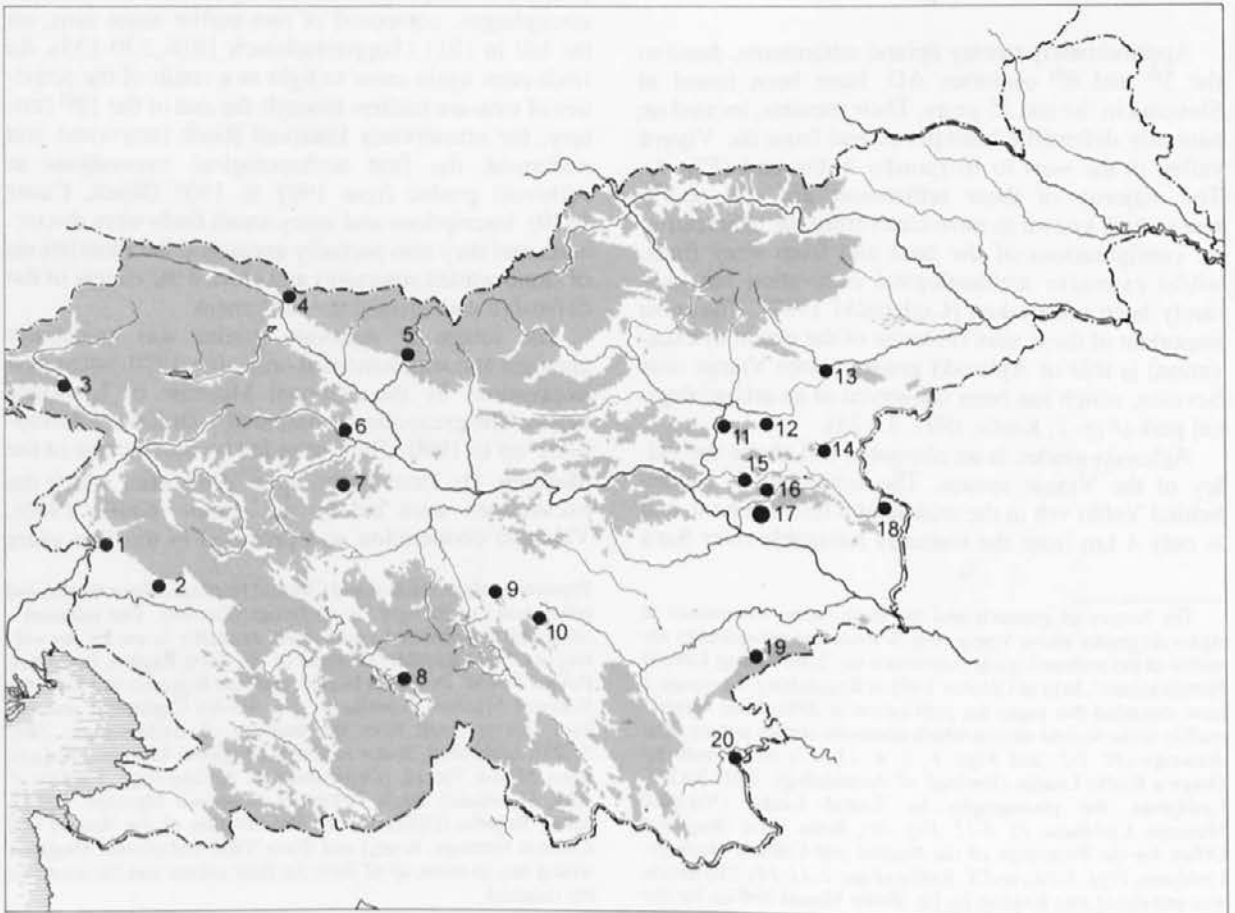
Each phase of excavation was concentrated on individual settlement units. In 1970-72, this was the ecclesiastical complex and cemetery. The ecclesiastical complex was located in the highest part of the settlement and was composed of two double-naved churches and a baptistery (Fig. 4: 1-3; Ulbert 1975). The upper church had a semicircular apse, and the lower church had a semicircular bench for the priests. A cemetery with 41 inhumation graves from 5th and 6th centuries was located on an easily accessible saddle below Ajdovski gradec (Fig. 4: 13; Bachran 1975).

Similar ecclesiastical complexes are rare in the eastern Alpine regions: the only other example in

Slovenia is that at Kučar above Podzemelj in Bela Krajina (Ciglencečki 1986). Analogies for the lower church with its free-standing priest's bench are much more numerous (Bierbrauer 1988, 46 ff.).

The next archaeological campaign - in 1974 - was concerned with the excavation of two houses. The first house (called house A), located near the upper church, was distinctive, as is shown by the arrangement of the rooms and the rich finds; it was interpreted as probably having been an episcopal residence (Fig. 4: 5; Petru 1979). The house had four rooms and was almost 18 m long and 9 m wide. Certain finds from this house were exceptional, such as a loom-weight in the shape of the goddess Luna, a bronze bowl, stamped pottery (cat. A 1, 2), small amphorae called *spatheia* (cat. D 1, 3, 4), a marble mortar and a silver pin, but domestic artifacts were quantitatively dominant, particularly simple vessels (cat. C 2) mainly in the form of pots and bowls (Knific 1979, 732 ff.).

Fig. 1: Map of (partially excavated and published) upland settlements of the 5th and 6th centuries in Slovenia: 1 - Sv. Katarina above Nova Gorica (Svoljšak 1990), 2 - Sv. Pavel above Vrtovin (Svoljšak 1985), 3 - Tonovcov grad near Kobarid (Ciglencečki 1994), 4 - Ajdna above Potoki (Leben, Valič 1978; Sagadin 1987), 5 - Sv. Jakob above Preddvor (Valič 1990), 6 - Trnje near Škofja Loka (Ciglencečki 1987, 89), 7 - Gora sv. Lovrenca above Polhov Gradec (Petru 1967 a; Slabe 1980), 8 - Križna gora near Lož (Urleb 1974, 63-65, 69-71, app. 1; Ciglencečki 1987, 82), 9 - Limberk above Velika Račna (Ciglencečki 1985, 261-263), 10 - Korinjski hrib above Veliki Korinj (Ciglencečki 1985), 11 - Vipota above Pečovnik (Ciglencečki, Pirkmajer 1987; Ciglencečki 1993), 12 - Rifnik near Šentjur (Bolta 1981), 13 - Gradišče at Zbelovska gora (Ciglencečki 1992, 81-85), 14 - Tinje above Loka near Žusem (Ciglencečki 1982; Ciglencečki 1984, 315, 326), 15 - Vranja peč near Lipni dol (Ciglencečki 1992, 53-55), 16 - Gradec above Prapretno (Ciglencečki 1981; Ciglencečki 1984), 17 - Ajdovski gradec above Vranje near Sevnica (Petru, Ulbert 1975; Knific 1979; Petru 1979; Ulbert 1979), 18 - Svete gore above Bistrica ob Sotli (Korošec, Korošec 1978; Korošec 1978), 19 - Zidani Gaber at Gorjanci (Petru 1967, Ciglencečki 1987a), 20 - Kučar above Podzemelj (Ciglencečki 1986).



The second house (B), with a single room and an entrance windbreak, was built on the western slope (Fig. 4: 7; Ulbert 1979). The house contained wealthy finds, most of which had been excavated in 1901-1905 (Riedl, Cuntz 1910, 3 ff., T. 2; Knific 1979, 743 ff.).

The 1977-78 excavations concentrated on the water cistern (Fig. 4: 4). This reservoir was still visible a hundred years ago (Rutar 1891, 208): "There is a square well, 5 x 4 m, in the hillfort, in which there is always water that does not dry up even in the worst drought. This well might be very deep, but it is half filled with rubble." When rediscovered in 1974, it was completely filled with stone. When the debris had been removed to a depth of 2.5 m, water appeared amongst the stones. A 15th or 16th century hoard was found just above its surface by the northern wall: an iron sword, 123 cm long, with a pottery vessel beside it. Well-preserved sections of the wooden roof construction and elements of worked wood from the surface above the cistern were found in the water amongst the stones (Fig. 5; Knific 1991, 19-23, 103-104): beams and shingles as well as planks. The analyzed wood samples are dominated by common oak and related species, and often fir. A trough, hollowed from a single piece of oak, lay amongst them (Fig. 6). It was 1.5 m long with a drainage hole in the bottom.

Worked stone, two altars and fragments of mortuary architecture, also lay amongst the smaller stones

and wood. One shows four deceased individuals, the second a scribe, and the third was part of an inscription (Petru 1980). The stone monuments had been brought to Ajdovski gradec from some Roman cemetery in the valley and were used in construction (Šašel 1975).

The remains of the wooden platform above the cistern lay right at the bottom of the cistern (Fig. 7): a cover with its opening, a ladder (the rungs hazel, the side pieces birch), the wooden plank enclosure of the well opening, and a piece of roof ridge capping, made from half a thin tree trunk (Fig. 8). Many wedges of birch were also found, as well as a pulley wheel of birch, bucket bases of yew, alder and fir, a bucket hoop of juniper, and a wooden distaff and horn spindle-whorl (Knific 1991, 22-23).

The dimensions of the water cistern were 5.40 x 4.00 m and it was cut 6 m deep into the bedrock. The cistern had 60 cm thick walls. They were built of stone and hard mortar mixed with crushed tile. The walls were smoothed and polished on the inner surface and were water-proof. The cistern was damaged by fire at some point, as were the other buildings in settlement. The original surface was scraped during its reconstruction and replastered and polished.

The cistern had a capacity of 100,000 litres of water. Rainwater was collected in it from the surrounding shingle-covered roofs. A wooden platform of thick planks, cut from half a tree trunk, stood above the

Fig. 2: Ajdovski gradec above Vranje near Sevnica, a fortified upland settlement, conserved as an archaeological park.



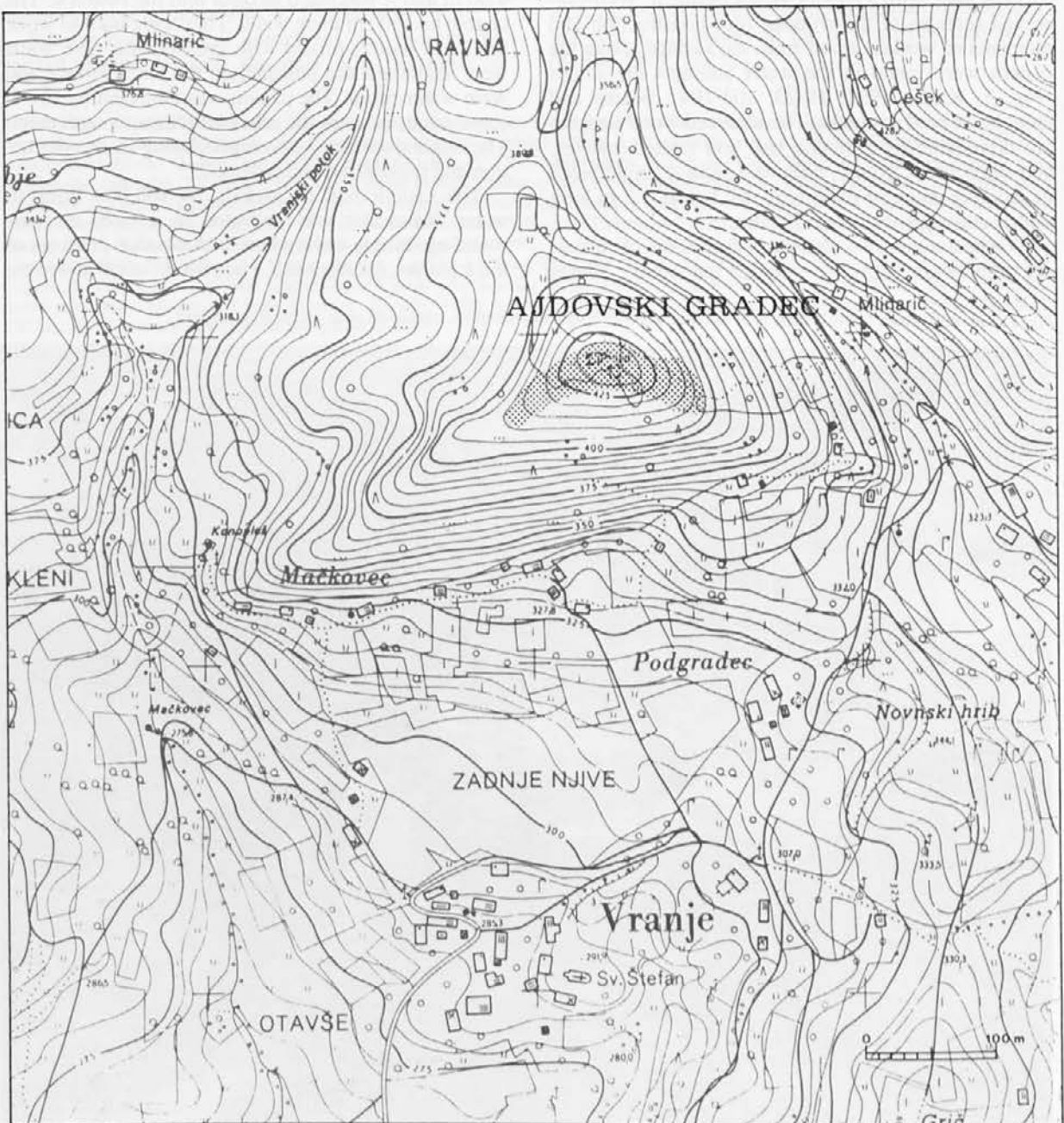
cistern. There was a ca. 1 x 0.5 m opening with a cover between the planking. A wooden trough stood on the platform. The walls above the platform were narrower and covered by a four-planned roof. The roof beams were grooved longitudinally for the attachment of shingles, which were cut diagonally at one end for this purpose.

The water cistern was located on the edge of the settlement, as a part of the defensive wall. Therefore, the construction above the cistern has been interpreted as a defensive tower, the floor levels of which were accessible by ladder. Support for such an interpretation would come from two Slovenian sites. The first is Korinjski hrib above Veliki Korinj, where apart from a

church, five defensive towers were excavated, one of which had a water cistern at its base (Ciglencečki 1985, 256, Fig. 4). The other site is Sv. Pavel above Vrtovin in the Vipava valley: a high water tower still stands below the prominent settlement (Osmuk 1982). As can be seen in the cases of Ajdna above Potoki (Leben, Valič 1978, 539) and Rifnik near Šentjur (Bolta 1981, 9), water cisterns were the second most important component of 5th-6th century upland settlements after churches.

The third component was dwelling structures. These were the main subject of our excavations in 1980-82: two houses next to the four-roomed house A (suggested episcopal residence) were excavated at this

Fig. 3: The position of Ajdovski gradec above Vranje near Sevnica (Map 1:5000).



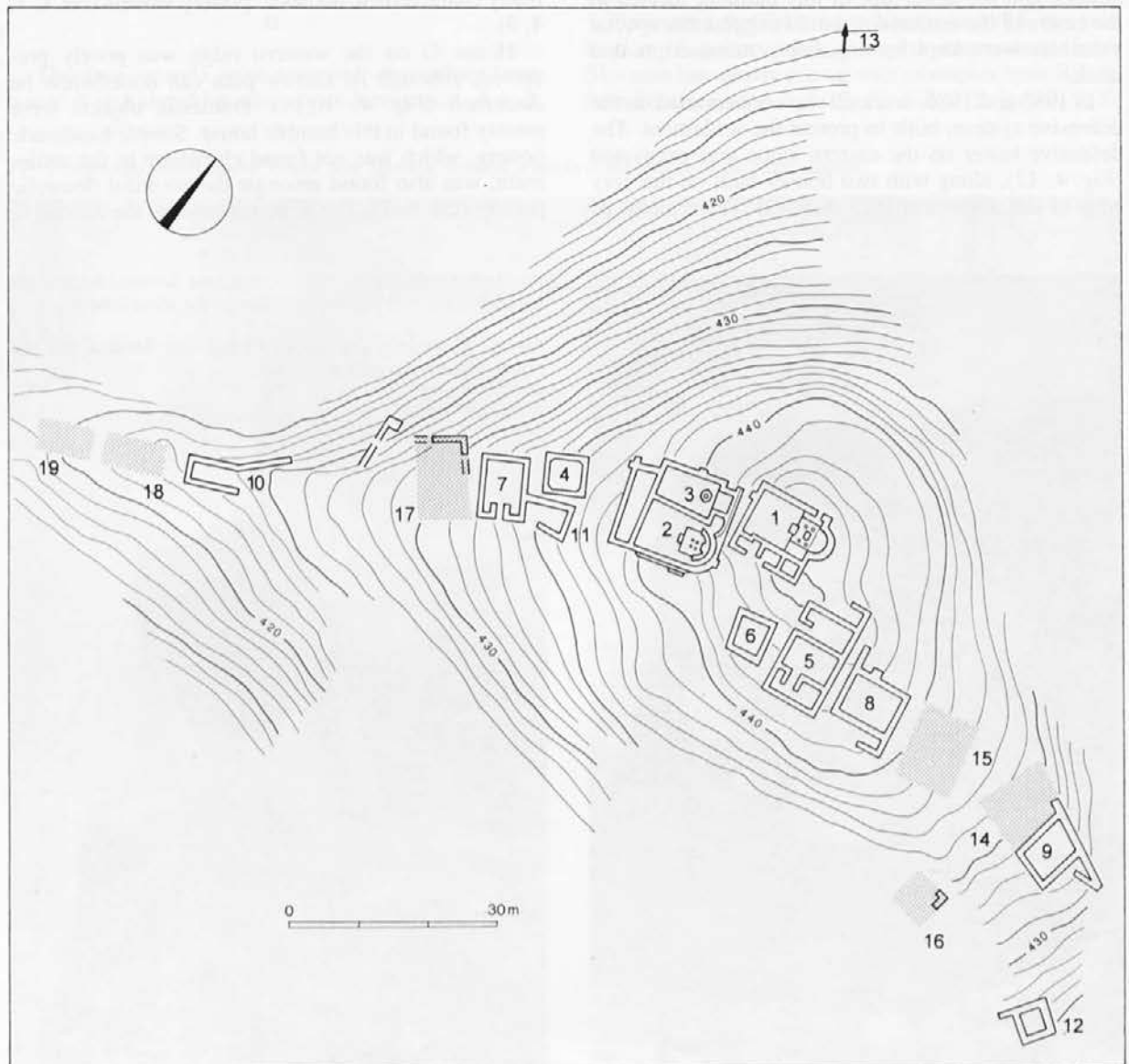
time. A stone-built house C stood to the east of it with a regular plan and a central room, measuring almost 10 x 8.5 m. (Fig. 4: 8). A courtyard on the northern side and a small annex on the south were also part of this house. The remains of a wall in the centre of the central room and different floor levels suggest that the room was probably divided (Fig. 9). A paving probably covered only the half nearest to house A, the other half being floored with beaten earth. A stone quern was found here *in situ*. The house was built parallel to and only half a metre from house A.

Excavation proved that this had not been the first building at this location. The stone-built structure was exactly superimposed on the plan of an earlier wooden house. The outline of the earlier building was recorded by wooden posts driven deep into the ground. The oval pit in the centre used for storage could also have been

a part of the earlier house (Fig. 9), whilst the two other later pits were probably created by digging for sand to be used during the construction of the new house. The pits were filled with finds, mostly pottery from the end of the 4th century and the first decades of the 5th century.

A large quantity of animal bones were scattered throughout all the houses. As was determined by Dr. Joachim Boessneck, 97.5% were from domestic animals. The majority were the bones of small ruminants, i.e. sheep and goats, pig bones were the next most common, and cattle bones were third. In reality, considering the weight of cattle, mainly beef was consumed. The diet was enriched with chickens and pigeons. The most common wild animals were deer, followed by wild pig. The list is rounded off by roe deer, rabbit and beaver. Many river fish were eaten,

Fig. 4: Ajdovski gradec above Vranje near Sevnica, the plan of the settlement: 1 - the upper church; 2 - the lower church; 3 - the baptistry; 4 - the water cistern; 5 - a house, the putative episcopal residence (A); 6 - the building with central heating (D); 7, 8, 9 - houses (B, C, E); 10 - a house (G) and the rampart; 11 - a dwelling extension (F); 12 - a defensive tower; 13 - the cemetery; 14-19 - unexcavated structures.



particular carp species, but also wall-eye or barbel, a fish similar to bleak (*Leuciscus virgo*), and even a type of salmon over a metre in length.

A rectangular building with a single room (house D; 6 x 7 m) was different from all other houses (Fig. 4: 6). It was placed in such a manner that it formed a small square in the centre of the settlement together with the upper church and house A (Fig. 10). Its small size, the scarcity of finds and a central heating system differentiated it from the other houses. The house was built of stone with a floor of lime mortar. Channels for central heating, covered with stone slabs, ran under the floor. The frequent renovation of the heating system shows that they were not very competent in this technology: the channels leaked before they were completed, the furnace opening was rebuilt twice, and the right-angled channels were later connected with diagonal channels. These efforts to service the central heating system shows that they definitely required a warm room without smoke and soot. This together with the absence of the usual finds characteristic of dwelling houses, and the small size of this building located in the centre of the settlement, would suggest that special valuables were kept here, possibly manuscripts and cloth.

In 1985 and 1986, research was concentrated on the defensive system, built to protect the settlement. The defensive tower on the eastern slope was excavated (Fig. 4: 12), along with two houses built on the very edge of the settlement (Fig. 4: 9,10). The remains of

the tower were exceptional in terms of the solidity and thickness of the walls that protected a rectangular room less than 4 m²; the outer wall was 1 m thick (Fig. 11).

House E on the eastern slope, whose northern wall was attached to the line of the defensive rampart, had three rooms (Fig. 4: 9). An irregularly rectangular room and a triangular extension to the external wall of the settlement, to which the house was generally adapted, were excavated (Fig. 12). Apart from finds of a domestic nature, many tools were also found - an awl, a knife, whetstones, and saws - hence this house may have belonged to a craftsman. A deer antler, the raw material for the production of spindle-whorls and combs, was found amongst the tools. One such spindle-whorl, produced with a lathe, fell into the water cistern along with a wooden distaff, whilst horn combs were found throughout the settlement.

The original house B was later enlarged with an annex, which was excavated in 1985-1986 and designated house F (Fig. 4: 11,5). It contained a quern and many characteristic domestic pottery vessels (cat. C 1, 4, 5).

House G on the western ridge was poorly preserved, although its narrow plan can nonetheless be discerned (Fig. 4: 10,14). Domestic objects were mainly found in this humble house. Simple handmade pottery, which was not found elsewhere in the settlement, was also found amongst the plentiful domestic pottery (cat. 6, 7). The structure adjoins the defensive



Fig. 5: Ajdovski gradec above Vranje near Sevnica, the wooden remains of the roof and well platform in the water cistern.

Fig. 6: Ajdovski gradec above Vranje near Sevnica, the oak trough in the water cistern.



wall of the settlement, which has step-like foundations here because the steep nature of the terrain.

The defensive wall continues from this house along the northern slope, where it can be traced through the configuration of the land, although more extensive research has not yet been undertaken. The last excavation, which took place in 1990 to the west of the upper church, did not yield the expected results in this respect. Many other areas requiring excavation remain. Such a project is planned to begin after the publication of a new study about Ajdovski gradec, currently being prepared. This project would include the continued excavation of the craftsman's house E (Fig. 4: 14), the large house in the middle of the eastern slope (Fig. 4: 15), the already partially excavated defensive tower nearby (Fig. 4: 16), and the defensive wall and structures between house B and house G on the western slope (Fig. 4: 17). Other buildings far along the western ridge can be seen from their outlines (Fig. 4: 18,19).

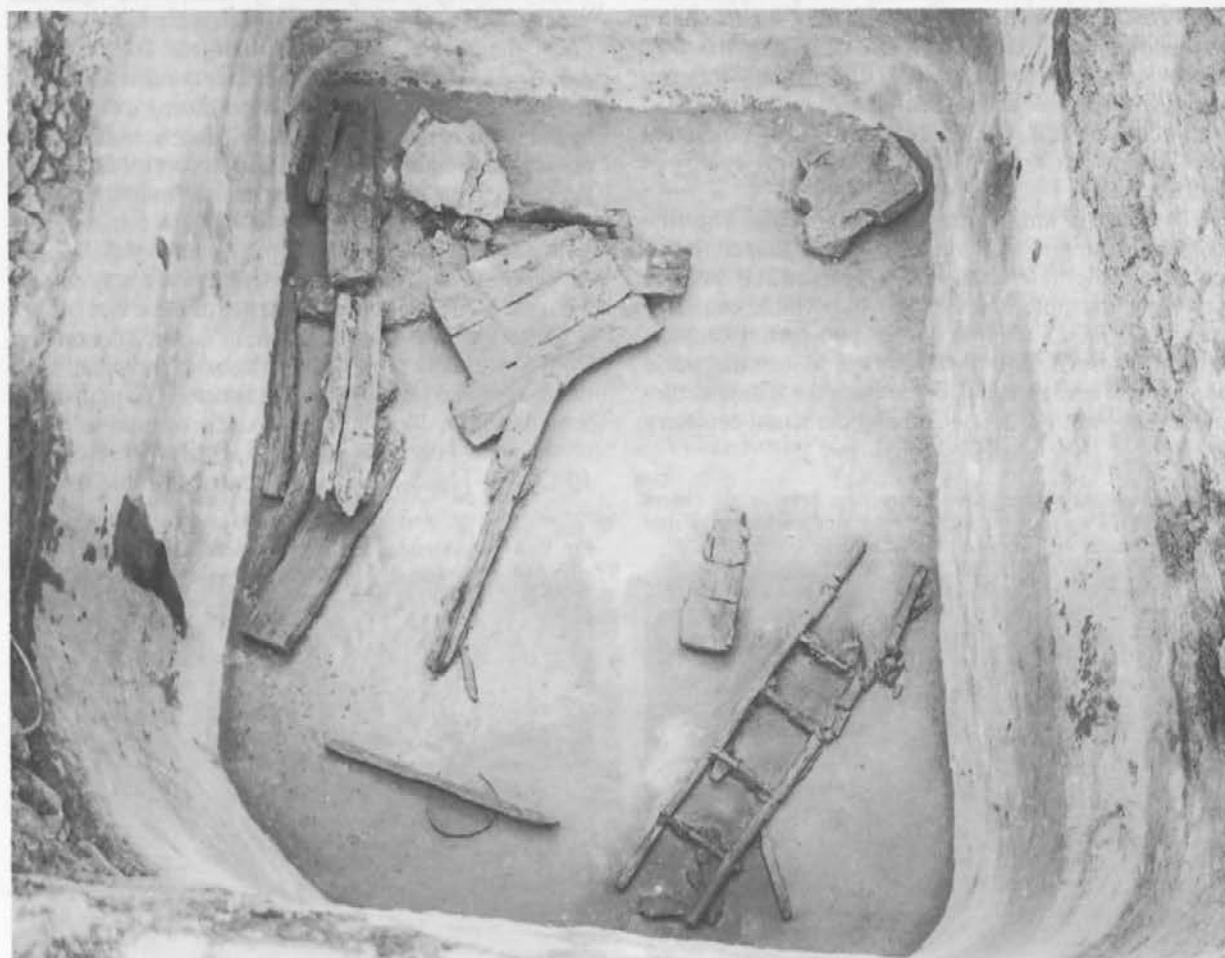
II.

The two vessels with stamped decoration from house A at Ajdovski gradec above Vranje (cat. A 1, 2;

Pl. 1: 1,2; 8: 1,2) were not the first examples of such pottery to be discovered in Slovenia (Fig. 15). A fragment from Vratolom near Zidani Gaber at Gorjanci was found in 1887 (cat. A 5; Pl. 1: 6; 9: 4), whilst only a little later, part of a beaker was found in the large Migration Period cemetery at Kranj (cat. A 14; Pl. 2: 8; 9: 11). The latter has been published several times (Schmid 1939, 8, Fig. 15; Ložar 1939, 185, T. 18: 12; Werner 1962, T. 18: 2; Simoni 1977-1978, 223 ff., T. 3: 6; Stare 1980, 80, T. 125: 13). The fragment found during the excavation of the Early Slavic cemetery near the parish church in Kranj in 1953 remained unnoticed (cat. A 7; Pl. 2: 9), unlike the beaker from grave 86 at Rifnik near Šentjur (cat. A 7; Pl. 2: 1; 8: 4), which immediately attracted much attention (Bolta 1970-1971, 135, Fig. 8). At this point comprehensive studies of the stamped pottery from western Pannonia (Werner 1962, 54 ff.) and Italy (Hessen 1968) had been published. An analysis of the pottery finds from the territory of now former Yugoslavia was also undertaken shortly afterwards (Simoni 1977-1978, 214 ff.).

Following the finds from Vranje in 1974, the collection of pottery with stamped impressions from Slovenia has slowly grown with examples from Rifnik near Šentjur (cat. A 6, 8-13; Pl. 1: 7; 2: 2-7; 8: 3; 9: 5-

Fig. 7: Ajdovski gradec above Vranje near Sevnica, wooden artifacts at the bottom of the water cistern.



10 a-f), and Ajdovski gradec above Vranje (cat. A 3, 4; *Pl. 1*: 3-5; 9: 1-3), whilst there are also two new fragments from settlement strata in Kranj, i.e. the Late Roman *civitas Carnium* (cat. A 16, 17; *Pl. 2*: 10,11; 9: 12,13).

The pottery with stamped decoration from Slovenian sites is divided into jugs, flasks and beakers. The jug from Ajdovski gradec above Vranje probably - on the grounds of analogies from Kápolnásnyék, Testona and Carpianello (Werner 1962, 55 ff., T. 17: 1; 19: 5; Hessen 1968, 22 ff., Fig. 2, T. 1: 12; 3: 87) - had a spout for pouring liquid (cat. A 1; *Pl. 1*: 1; 8: 1). The jug, which is markedly spherical in shape, has a noticeably thickened base rather than a flat one, so that even if the vessel were to tip, it would always return to its original position because of the weighted base. As the full vessel was undoubtedly too heavy for its ribbon handle, which could easily break off, the spherical form was ideally suited for pouring liquids, since the vessel need only be slightly tilted on the edge of a shelf to pour liquid into a beaker below (Knific 1979, 742).

Two vessels have been identified as flasks. The first is a typical purse-shaped flask with an everted rim from Ajdovski gradec above Vranje (cat. A 2; *Pl. 1*: 2; 8: 2); it is of high quality production and together with the jug represents a luxurious drinking set. The second flask, which was partially reconstructed from numerous fragments found scattered through the occupation layer at Rifnik above Šentjur, has a simple appearance and oval form, made of clay with fine inclusions of crushed pottery (cat. A 13; *Pl. 2*: 7; 9: 10 a-f). Considering its reconstructed dimensions, the rim sherd from Rifnik above Šentjur may also have been part of a flask (cat. A 9; *Pl. 2*: 3; 9: 6), as this fragment is related to the Vranje flask in terms of the quality of workmanship.

Two beaker variants appear in Slovenia. The first contains examples that imitate the purse-shaped flasks, but are smaller (Hessen 1968, 29; variant A): the only complete example comes from the Rifnik cemetery (cat. A 7; *Pl. 2*: 1; 8: 4), whilst two partial beakers, which are sufficiently well-preserved for the purse shape to be recognizable, come from the Rifnik settlement (cat. A 8; *Pl. 2*: 2; 9: 5) and the Kranj cemetery

(cat. A 14; *Pl. 2*: 8; 9: 11). Analogies for these can be found in beakers from the sites of Velké Pavlovce and Cividale-Gallo; this pottery is characteristic of the Lombard Pannonian period (Werner 1962, 55, T. 18: 4; 19: 9; Bierbrauer 1990, 80, Fig. 14: 1,2). The other variant is represented by a beaker from the Rifnik settlement, with a poorly marked rim of the neck, where the diameter of the beaker is smallest (cat. A 6; *Pl. 2*: 7; 8: 3); it can be compared with the beaker from Calvisano in Italy (Hessen 1968, 29; T. 26: 86; variant B). The decorated fields - of horizontal bands and hanging triangles - are filled with the impressions of hatched stamps of various shapes: crosses, rectangles, rhomboids, circles and palmettes. The most frequent combinations are rectangles with rhomboids and crosses with rhomboids, whilst circles and palmettes appear only twice (*Pl. 3* and 4). Stamp-decorated pottery in western Pannonia and Italy is usually considered to be related to the Lombards, as is pottery with a burnished lattice or hatched decoration (Werner 1962, 58 ff.; Hessen 1968, 26).

The first fragments of this pottery found in Slovenia (*Fig. 15*) were discovered in 1941-1943 in the excavated settlement strata at Rifnik (cat. B 5, 9; *Pl. 3*: 5; 10: 5), although only the bowl fragments from Kranj attracted great attention (cat. B 10; *Pl. 4*: 2; 8: 6). New fragments were discovered at Rifnik during later archaeological excavations (cat. B 6-8; *Pl. 3*: 6-8; 10: 6-8), and they were joined by finds from Ajdovski gradec above Vranje (cat. B 1, 2; *Pl. 3*: 1,2; 10: 1,2), and Tinje above Loka near Žusem (cat. B 3, 4; *Pl. 3*: 3,4; 8: 5). Fragments of a bowl decorated in such a manner have recently been found during excavations in the town centre of Kranj near Kieselstein Castle, a point from which it was possible to control the crossing of the river Sava. This was important to the *civitas Carnium*, as is indirectly indicated by the cemeteries at Lajh (Stare 1980) and near the church of St Martin (Sagadin 1988), which were located directly across from each other on opposite banks of the river.

Pottery with burnished lattice or hatched decoration from Slovenia is represented by bowls and small handled jugs. The bowls were biconical in shape, wheel-turned, with a dark, burnished surface and decoration on the widest part (cat. B 4, 9-11; *Pl. 3*: 4; 4: 1-6; 8: 6; 10: 3-4, 9-11). Similar bowls, but with more marked

Fig. 8: Ajdovski gradec above Vranje near Sevnica, the cistern cover with an opening for taking water and a segment of roof ridge capping at the bottom of the water cistern.



Fig. 9: Ajdovski gradec above Vranje near Sevnica, house C.



profilation and ringed bases, from Lombard graves at Baumgarten, Poysdorf and Hohenau in Lower Austria and from the Germanic grave at Podbaba near Prague, were already included into a specific group of pottery, which is dated to the early 6th century (Werner 1962, 58-59, T. 22: 1-3,5). When several similar vessels were found in a pottery kiln at Ternitz near Neunkirchen in Lower Austria, this pottery type was the subject of specific study (Friesinger, Kerchler 1981). These vessels apparently spread in the first third of the 6th century, after the Lombards moved in 505 AD across the Danube from Rugiland to Feld (according to Paul the Deacon), in the district of Tulln, where such pottery was native to the Roman population; it also appeared later in local variants north of the Danube as well (Friesinger, Kerchler 1981, 262-263). The examples from Tinje above Loka (cat. B 4; *Pl.* 3: 4; 10: 3) and Kranj (cat. B 10, 11; *Pl.* 4: 2-6; 8: 6; 10: 9-11) are stylistically most similar to the examples from Erperesdorf and Nikitsch in Austria, although the latter lack hatched decoration (Friesinger, Kerchler 1981, 262, Fig. 44: 3,4). Vessels with burnished decoration from Slovenia are dated to the Lombard Pannonian phase, and the two biconical vessels from Kranj (cat. B 10, 11; *Pl.* 4: 2-6; 8: 6; 10: 9-11) can be understood as the westernmost examples of this group. The rim of a small vessel, possibly a beaker, from Ajdovski gradec above Vranje (cat. B 2; *Pl.* 3: 2; 10: 2) is probably also from this period. In contrast, the small handled jug from Tinje above Loka (cat. B 3; *Pl.* 3: 3; 8: 5) has an Italian analogy from the site of Vestone (Hessen 1968, 28-29, T. 23: 84).

However, in an analysis of pottery with burnished decoration, it is necessary to take into account the fact that pottery decorated in this manner, and particularly the single-handled jugs, was widespread as early as the 4th and 5th centuries (Friesinger, Kerchler 1981, 235 ff.). A fragment from Rifnik (cat. B 5; *Pl.* 3: 5; 10: 5) might have belonged to such an "old" jug. A fragment of a bowl from house C at Ajdovski gradec above Vranje (cat. B 1; *Pl.* 3: 1; 10: 1) is dated to the end of the 4th and the first decades of the 5th centuries; according to the excavator Boris Vičič, it was found in the earlier refuse pit, and thus it need not be connected with the Lombards. This problem is still largely unre-

solved with regard to the Slovenian material, as is also shown by a one-handled jug with burnished decoration (*Fig. 16*) found in the cemetery of Roman *Nevidunum* (Drnovo), where the latest finds extend only to the first decades of the 5th century (Petru, Petru 1987, 48, 80, T. 50: 7; cf. Ciglencčki 1993a, 509, T. 3: 3).

Pottery connected with the Lombards is scarce in comparison with the abundant local or domestic pottery. Such proportions are apparent at Ajdovski gradec above Vranje and at the other upland settlements in Slovenia. Local pottery has been considered to a certain extent in the presentation of fortified elevated settlements, such as Ajdovski gradec above Vranje (Knific 1979), Rifnik near Šentjur (Bolta 1980), Korinjski hrib above Veliki Korinj (Ciglencčki 1985), Vipota near Celje (Ciglencčki, Pirkmajer 1987) and especially in connection with the discoveries at Gradec near Prapretno (Ciglencčki 1981, 423-427) and Tinje above Loka near Žusem (Ciglencčki 1984).

Although certain differences are noticeable among the domestic pottery from different sites, it is nonetheless easy to recognize, similar and characteristic. Pots and bowls with everted rims are the most common forms. The coarse, mottled surface is frequently undecorated (examples from Ajdovski gradec above Vranje: cat. C 1, 2, *Pl.* 5: 1,2; 11: 1,2). The main decorative elements are small horizontal grooves and wavy lines (examples from Ajdovski gradec above Vranje: cat. C 3, 4; *Pl.* 5: 3,4; 11: 3,4). The dimensions of the vessels are extremely variable: the largest example is 27.5 cm high, whilst the smallest, a beaker, barely reaches 4.7 cm (cat. C 5; *Pl.* 5: 5; 11: 5). Hand-thrown products, such as the pots from house G (cat. C 6, 7; *Pl.* 5: 6,7; 11: 6,7), are rare.

Apart from pottery connected with the Lombards, and the predominant local, domestic pottery, excavation of the houses at Ajdovski gradec above Vranje also produced small early Byzantine amphorae, the so-called *spatheia* (cat. D 1-8; *Pl.* 6: 1-9; 7: 1; 12: 1,2). The first *spatheion* was found in 1901-1905, north of the upper church (Riedl, Cuntz 1910, 12, Fig. 20). They have also been found at other upland settlements in Slovenia (*Fig. 15*), such as Križna gora near Lož (cat. D 12, 14, 15; *Pl.* 7: 5,7,8), Korinjski hrib above Veliki Korinj (cat. D 9, 10; *Pl.* 7: 2,3), Rifnik above

Fig. 10: Ajdovski gradec above Vranje near Sevnica, the house with heating channels (D).



Fig. 11: Ajdovski gradec above Vranje near Sevnica, the defensive tower on the eastern slope.



Šentjur (cat. D 11, 13; *Pl.* 7: 4; 6: 6; 12: 4), and recently in Koper, where an almost complete *spatheion* has been excavated (cat. D 17; *Pl.* 7: 10; 12: 5), whilst the excavator Radovan Cunja has stated that another six rims and ten bases of small amphorae were found in the occupation layers. One rim fragment, which probably belongs to such an amphora, was found in the settlement strata at *Carnium* (cat. D 16; *Pl.* 7: 9).

A comprehensive analysis of *spatheia* has been given by Michael Mackensen in the publication of material from the Byzantine castellum at Sadovec in Bulgaria; he classified these amphorae to the Benghazi Late Roman 8a/Keay XXVI/Scorpan XVI S type (Mackensen 1992, 245 ff.). Its characteristics include a slender body, hard firing, brick red to brownish colour, frequently with a yellowish surface. They may have two handles or none. The rim diameter is 5.5 cm-7.5 cm, the greatest diameter is 10 cm-12 cm, the height is 40-45 cm, whilst the lower end is 3-4 cm long. They originated in the eastern Mediterranean and were in use in the 6th and the first half of the 7th centuries, which is particularly true of Early Byzantine utilization of them in castella and fortified elevated settlements (Mackensen 1992, 247, 251).

These characteristics are also valid for the examples from Slovenia, with the exception of the example from Koper (cat. B 17; *Pl.* 7: 10; 12: 5), which has a more slender body, is light brown, with a rim diameter of 6.4 cm, a body diameter of 8.4 cm, a height of 43.2 cm, a 7 cm long conical base and a capacity of 0.7 litres. The remainder have the following dimensions: rims from 6.7 cm to 7.65 cm, diameters from 11.5 to 11.9 cm, heights from 40.5 cm to 44.8 cm, and capacities from 1.6 to 1.9 litres. As the individual small amphorae discovered in the settlement strata of sites in Slovenia were almost always only preserved in fragments, it is clear that *spatheia* were in fact utilized into the very latest period of the fortified elevated settlements, thus to the end of the 6th century, when these settlements were abandoned one after the other. This was possibly not relevant at *Carnium* (Kranj), and was definitely not the case at *Justinopolis* (Koper), where settlement continued.

Fig. 12: Ajdovski gradec above Vranje near Sevnica, a house (E) with a triangular extension.



The elevated fortified settlement at Ajdovski gradec above Vranje with its strictly planned layout, in which a central position was accorded to an ecclesiastical complex, would indicate that its inhabitants were spiritually influenced by Christianity. The small finds mostly belong to the Late Roman world, in which the Romanized natives in this and other related settlements attempted to lead an independent existence, removed from the large towns and main roads. The pottery with stamped decoration and with burnished hatched decoration refers indirectly to the political authority that the Lombards, then newly arrived in Pannonia and later the conquerors of Italy, exercised over the country, whilst the *spatheia* on the other hand indicate the continued existence of at least trade links with the Early Byzantine Mediterranean world.

CATALOGUE

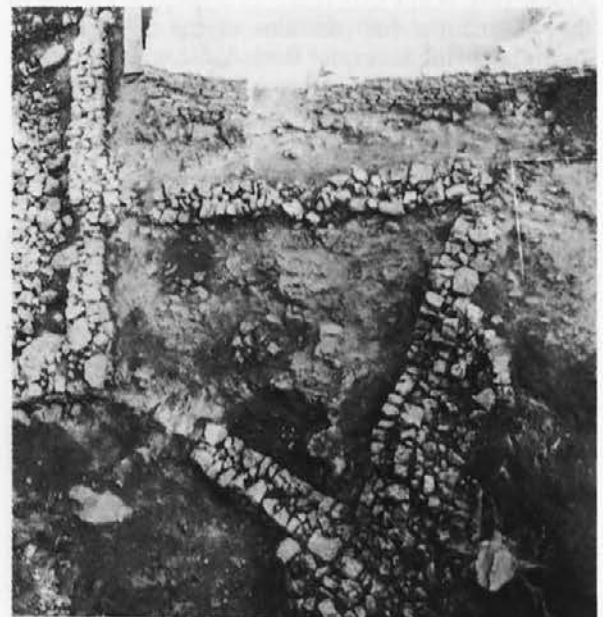
(Abbreviations: D. or d. = diameter, h. = height, inv. no. = inventory number)

A. Pottery with Stamped Impressions

1. Jug: *Pl.* 1: 1; 8: 1. Site: Ajdovski gradec above Vranje near Sevnica, house A, room I; excavated in 1974. Well-cleaned clay, fired brick red (individual fragments of the jug were fired a grey colour). The surface of the spherical jug is burnished. A black slip or coating remains in several places. The jug is decorated with hatched stamp impressions in five bands (from top to bottom): 1. rectangles; 2. and 3. small rhomboids; 4. large rhomboids; 5. small rhomboids. The decorated zone is interrupted by the base of the handle, which was not found. There is a horizontal channel above the decorated zone and a rib below the rim. The rim is everted, thickened and cut straight. D. rim: 10.4 cm; d. jug: 20.1 cm; h.: 18.1 cm. Narodni muzej, Ljubljana (NMLj), inv. no. R 11706. Lit.: Knific 1979, 753, Fig. 49.

2. Flask: *Pl.* 1: 2; 8: 2. Site: Ajdovski gradec above Vranje near Sevnica, house A, room II; excavated 1974. Refined clay, fired yellow-brown. The exterior is burnished and covered with a transparent coating. The purse-shaped flask is decorated with

Fig. 13: Ajdovski gradec above Vranje near Sevnica, dwelling extension (house F).



stamped impressions in four bands (from top to bottom): 1. crosses; 2. and 3. small hatched rhomboids; 4. hatched rectangles; below this zone, there are nine pendant triangles, made up of deeply impressed rhomboids. There is a horizontal rib above the decorative zone. The rim is everted and the edge is not preserved. Preserved d. rim 7.7 cm; d. base 7.2 cm; h.: 16.1 cm. NM Lj, inv. no. R 11705. Lit.: Knific 1979, 734-735, Fig. 48.

3. Two fragments of a beaker: *Pl. 1: 3,4; 9: 1,2*. Site: Ajdovski gradec above Vranje near Sevnica, on the terrace north of the upper church; excavated 1990. Clay mixed with fine-grained sand; fired dark grey. The surface is burnished, but rough. The beaker was decorated with a band of hatched rectangles and at least three bands of hatched rhomboids. Dimensions of the fragments: 3.4 x 2.2 cm and 2.7 x 2.5 cm. NM Lj, temp. no. 90/136. Lit.: unpublished.

4. Rim sherd of a beaker: *Pl. 1: 5; 9: 3*. Site: Ajdovski gradec above Vranje near Sevnica, house C; excavated 1981. Refined clay, fired brown. The surface is burnished. A band of stamped hatched rectangles, with at least one band of hatched rhomboids below, circled the neck. Dimensions of the fragment: 5.1 x 2.25 cm. NM Lj, inv. no. R 11992. Lit.: unpublished.

5. Part of the body of a vessel: *Pl. 1: 6; 9: 4*. Site: Vratolom near Zidani Gaber in Gorjanci; excavated 1887. Refined clay, fired red-brown. The surface is burnished. Two sherds are preserved. Stamped decoration in five bands: 1. crosses; 2.-4. hatched rhomboids; 5. crosses. Dimensions: 7.0 x 5.35 cm. NM Lj, inv. no. R 2750. Lit.: Petru 1967, 436, T. 1: 1, 2.

6. Beaker: *Pl. 1: 7; 8: 3*. Site: Rifnik near Šentjur, house 3; excavated 1976. Refined clay, fired light brown. The surface of the purse-shaped beaker is burnished. The stamped decoration circles the shoulder of the beaker in three bands: 1. hatched circles; 2. and 3. hatched palmettes. D. rim (reconstructed): 4.5 cm; d. beaker: 8.65 cm; d. base: 5.1 cm; h.: 7.4 cm. PM Ce, inv. no. 593. Lit.: Bolta 1981, 22, T. 22: 51; 34: 14.

7. Beaker: *Pl. 2: 1; 8: 4*. Site: Rifnik near Šentjur, grave 86; excavated 1967. Refined clay; fired gray-black. The surface is burnished with remains of a shiny dark coating on the neck. The purse-shaped beaker is decorated with two rows of stamped hatched circles and ten pendant triangles, composed of stamped hatched rhomboids. The rim is everted. D. rim: 8.0 cm; d. beaker: 10.9 cm; d. base: 6.4 cm; h.: 10.9 cm. Pokrajinski muzej (Regional Museum), Celje (PM Ce), inv. no. 401. Lit.: Bolta 1981, 36, T. 15: 12; 34: 18.

8. Part of the rim and body of a beaker: *Pl. 2: 2; 9: 5*. Site: Rifnik near Šentjur, in front of the entrance to house 3; excavated 1985. Refined clay, exterior grey with traces of a dark coating, interior brown-grey, core fired light brown. The surface is burnished and decorated with seven bands of deeply stamped rhomboids. The rim is everted. Dimensions: 8.1 x 6.6 cm. PM Ce, inv. no. 1574. Lit.: Pirkmajer 1986, 284, Fig. 59.

9. Part of a flask rim (?): *Pl. 2: 3; 9: 6*. Site: Rifnik near Šentjur, near the prehistoric houses; excavated 1985. Refined clay, grog tempered; fired yellow-brown to dark grey. The surface is burnished. The stamped decoration consists of a band of hatched rectangles with a band of hatched rhomboids below it. A horizontal rib above the decorated zone. Everted rim. Dimensions: 4.5 x 4.4 cm. PM Ce, inv. no. 1573. Lit.: unpublished.

10. Part of the body of a vessel: *Pl. 2: 4; 9: 7*. Site: Rifnik near Šentjur, near the prehistoric houses; excavated 1985. Refined clay, grog tempered, fired grey. Surface burnished. The stamped decoration consists of a row of hatched rectangles and two bands of hatched rhomboids. Dimensions: 3.55 x 3.2 cm. PM Ce, inv. no. 1570. Lit.: unpublished.

11. Part of the body of a vessel: *Pl. 2: 5; 9: 8*. Site: Rifnik near Šentjur, near the prehistoric houses; excavated 1985. Refined clay, surface grey, core grey to brown. Surface burnished. The stamped decoration consists of a band of hatched rectangles and three bands of worn hatched (?) rhomboids. Dimensions: 3.4 x 2.95 cm. PM Ce, inv. no. 1571. Lit.: unpublished.

12. Part of the body of a vessel: *Pl. 2: 6; 9: 9*. Site: Rifnik near Šentjur, near the prehistoric houses; excavated 1985. Refined clay, fired grey. Surface burnished. The stamped decoration consists of a section of a pendant triangle composed of hatched rhomboids. Dimensions: 3.25 x 3.25 cm. PM Ce, inv. no. 1572. Lit.: unpublished.

13. Fragment of a flask: *Pl. 2: 7; 9: 10 a-f*. Site: Rifnik near Šentjur, between houses 3 and 4; excavated 1977. Refined clay, grog tempered; exterior dark grey, interior light brown. The exterior surface is divided by two horizontal ribs with the stamped decoration in the zone between them: two upper bands of crosses, below which are pendant triangles of hatched rhomboids. D. (reconstructed) flask: 14.3 cm; d. base 8.0 cm. PM Ce, inv. no. 766-769, 988, 1059. Lit.: Bolta 1981, 22, T. 23: 1-7.

14. Part of a beaker: *Pl. 2: 8; 9: 11*. Site: Lajh at Kranj, cemetery, excavated 1901. Refined clay, fired dark grey. Surface burnished. A fragment of the body with the transition to the neck and to the base of the beaker preserved. It was decorated with a band of hatched rectangles and with pendant triangles, composed of stamped hatched rhomboids. Dimensions of the largest fragment: 7.1 x 4.6 cm. NM Lj, inv. no. R 3727. Lit.: Schmid 1939, 8, Fig. 15.

15. Fragment of a vessel: *Pl. 2: 9*. Site: Kranj parish church, south side; excavated 1953. Description and drawing after documentation in the NM Lj. Refined clay; fired a reddish colour. The vessel was decorated with three horizontal grooves and a band of hatched rectangles above and below them. Dimensions: 4.0 x 3.0 cm. The fragment, which should be in the Gorenjski muzej in Kranj (GM Kr), is missing. Lit.: Gabrovec 1966, 250, T. 7: 22.

16. Fragment of a vessel: *Pl. 2: 10; 9: 12*. Site: Kieselstein Castle in Kranj, between trench 3 and 4; excavated 1989. Refined clay; surface fired black, core red. Decorated with stamped hatched rectangles. Dimensions: 2.4 x 2.3 cm. Temp. location: Zavod za varstvo naravne in kulturne dediščine (Office for the Protection of the Natural and Cultural Heritage), Kranj (ZVNKD Kr). Lit.: unpublished.

17. Fragment of a vessel: *Pl. 2: 11; 9: 13*. Site: Kieselstein Castle in Kranj, between trench 3 and 4; excavated 1989. Refined clay; surface fired black, core grey. Surface burnished. Three visible bands of stamped decoration: 1. and 2. hatched palmettes; 3. hatched circles. Dimensions: 3.75 x 2.25 cm. Temp. location: ZVNKD Kr. Lit.: unpublished.

B. Pottery with Burnished Lattice Pattern Decoration

1. Vessel rim: *Pl. 3: 1; 10: 1*. Site: Ajdovski gradec above Vranje near Sevnica, house C; excavated 1980-82. Refined clay; brown grey fracture. Exterior burnished a shiny black and decorated with burnished diagonal lines. Dimensions of the sherd: 3.95 x 3.25 cm; theoretical d. rim: 11.9 cm. NM Lj, inv. no. R 11875. Lit.: unpublished.

2. Beaker rim (?): *Pl. 3: 2; 10: 2*. Site: Ajdovski gradec above Vranje near Sevnica, house C; excavated 1981. Refined clay; dark grey fracture. Exterior and interior burnished to a glossy black. The beaker was decorated with a lattice pattern of burnished diagonal lines. Dimensions: 2.7 x 2.6 cm. NM Lj, inv. no. R 11991. Lit.: unpublished.

3. Small jug: *Pl. 3: 3; 8: 5*. Site: Tinje above Loka near Žusem, excavated 1980-81. Refined clay; fired grey to black. Surface burnished and covered with a shiny coating. There is a

Fig. 14: Ajdovski gradec above Vranje near Sevnica, a house (G) and the rampart on the western slope.



lattice pattern of diagonal burnished lines on the shoulder of the one-handed jug. There is a wide band of dark burnishing below it, from which narrow vertical burnished bands set at regular intervals extend to the base. D. everted rim: 4.25 cm; d. jug: 7.55 cm; d. base: 5.2 cm; h.: 10.9 cm. PM Ce, inv. no. 1581. Lit.: Ciglenečki 1984, 326, Fig. 7: 78.

4. Bowl rim: *Pl. 3: 4; 10: 3*. Site: Tinje above Loka near Žusem, house C; excavated 1980. Refined clay; fired grey. Exterior burnished dark grey; bowl shoulder decorated with a lattice pattern of burnished diagonal lines. Dimensions of the fragment: 6.1 x 4.55 cm. Everted rim. Temp. location: Inštitut za arheologijo, Znanstveno raziskovalnega centra SAZU (Institute of Archaeology, Scientific Research Centre, Slovenian Academy of Arts and Sciences), Ljubljana (IzA ZRC SAZU Lj). Lit.: Ciglenečki 1984, 326, Fig. 7: 77.

5. Part of a jug (?): *Pl. 3: 5; 10: 5*. Site: Rifnik near Šentjur; Schmid's excavations 1941-1943. Refined clay; fired grey. Exterior burnished, dark grey and decorated with a lattice pattern of burnished diagonal lines. Two horizontal grooves below it. Preserved h.: 11.2 cm. PM Ce, inv. no. 1241. Lit.: Bolta 1981, 29, T. 18: 12.

6. Fragment of a vessel: *Pl. 3: 6; 10: 6*. Site: Rifnik near Šentjur, prehistoric house 6; excavated 1957. Refined clay; fired grey. Exterior burnished, dark grey and decorated with a lattice pattern of burnished diagonal lines. Two horizontal grooves below it. Dimensions of the sherd: 5.3 x 5.2 cm. PM Ce, inv. no. 2665. Lit.: Bolta 1981, 28, T. 27: 32.

7. Vessel sherd: *Pl. 3: 7; 10: 7*. Site: Rifnik near Šentjur, between houses 3 and 4; excavated 1977. Refined clay; fired grey. Surface burnished. The vessel was decorated with three horizontal grooves and a lattice pattern of burnished diagonal

lines. Dimensions of the sherd: 3.3 x 3.2 cm. PM Ce, inv. no. 1053. Lit.: Bolta 1981, 23, T. 23: 72.

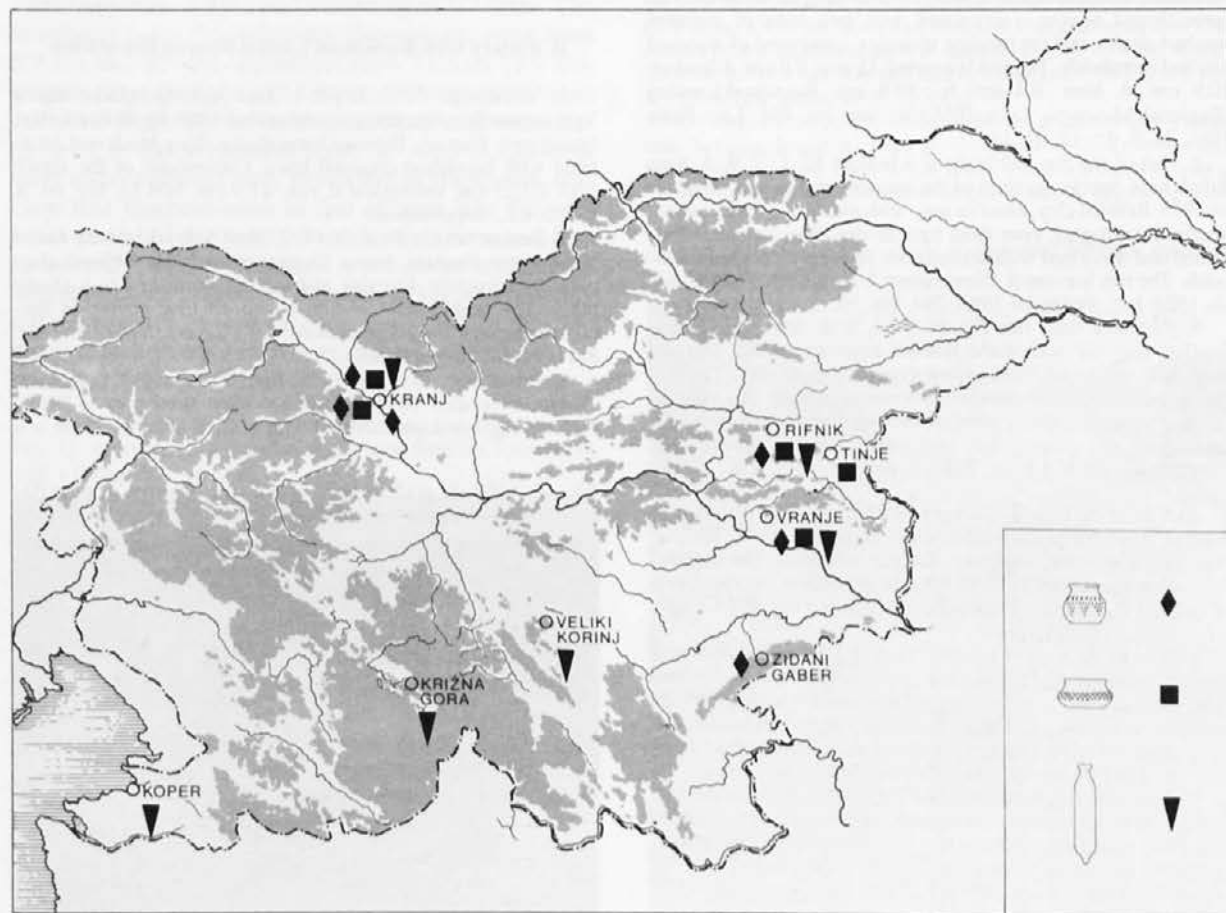
8. Fragment of a vessel: *Pl. 3: 8; 10: 8*. Site: Rifnik near Šentjur, prehistoric house 6; excavated 1957. Refined clay; fired grey. Exterior burnished and decorated with a lattice pattern of burnished diagonal lines. Sherd dimensions: 3.8 x 2.9 cm. PM Ce, inv. no. 2664. Lit.: Bolta 1981, 28; T. 27: 23.

9. Part of a vessel: *Pl. 4: 1; 10: 4*. Site: Rifnik near [entjur, Schmid's house 6; excavated 1941-43. Refined clay; light brown fracture. Surface burnished, dark grey, exterior shiny. It is decorated with two horizontal grooves and an incised lattice pattern of diagonal lines. D. (reconstructed) vessel: 12.0 cm; h. fragment: 10.3 cm. PM Ce, inv. no. 1149. Lit.: Bolta 1981, 29, T. 27: 73; 34: 13.

10. Fragments of a bowl: *Pl. 4: 2; 8: 6*. Site: Town Hall in Kranj; excavated 1965. Refined clay; core fired grey. Surface burnished, black. The bowl shoulder is decorated with a lattice pattern of burnished diagonal lines. (A. Valič assigned the fragments to a single bowl in the first publication, and to two bowls in the second). The vessel has been reconstructed (as are the dimensions, apart from the height); D. everted rim: 19.6 cm; d. bowl: 21.2 cm; d. base: 11.8 cm; h.: 9.4 cm. Lit.: Valič 1967; Valič 1970-1971.

11. Fragments of a bowl: *Pl. 3: 3-6; 10: 9-11*. Site: Kieselstein Castle in Kranj, between trench 3 and 4; excavated 1989. Refined clay; core fired grey. Surface burnished, black. The shoulder of the bowl was decorated with a lattice pattern of burnished diagonal lines. A band of a similar decoration extends vertically from the shoulder to the everted rim. D. (reconstructed) rim: 16.0 cm; d. bowl: 22.0 cm; dimensions of the largest fragment: 7.6 x 6.55 cm. Lit.: unpublished.

Fig. 15: A map of Slovenian sites with pottery with stamped impressions (catalogue A), pottery with burnished lattice pattern decoration (B) and small amphorae (D).



C. Local Pottery

1. Pot: *Pl. 5: 1; 11: 1*. Site: Ajdovski gradec above Vranje near Sevnica, house F; excavated 1985. The clay is densely tempered with sand and fired grey to brown. The surface is rough and mottled. Asymmetrical. The rim is everted. D. reconstructed rim: 18.5 cm; d. pot: 22.8 cm; d. base: 13.5 cm; h.: 21.2 cm. NM Lj, temp. inv. no. 85/6. Lit.: unpublished.

2. Bowl: *Pl. 5: 2; 11: 2*. Site: Ajdovski gradec above Vranje near Sevnica, house A, room II; excavated 1974. Clay tempered with fine grained sand. The rough surface is grey-brown, the fracture grey. The rim is everted. D. rim: 15.1 cm; d. bowl: 13.1 cm; d. base: 7.9 cm; h.: 6.8 cm. NM Lj, inv. no. R 11723. Lit.: Knific 1979, 736, Fig. 66.

3. Pot: *Pl. 5: 3; 11: 3*. Site: Ajdovski gradec above Vranje near Sevnica, house G; excavated 1985 and 1986. Clay tempered with sand; fired black to light brown. The surface is rough and mottled, and the exterior has fine horizontal grooving. Three wavy lines decorate the shoulder. The rim is everted. D. rim: 23.5 cm; d. pot: 25.3 cm; d. base: 14.9 cm; h.: 27.5 cm. NM Lj, inv. no. R 14643. Lit.: unpublished.

4. Bowl: *Pl. 5: 4; 11: 4*. Site: Ajdovski gradec above Vranje near Sevnica, house F; excavated 1985. Clay tempered with sand; fired brown. The surface is rough, partly mottled, with horizontal grooving and a single wavy line on the exterior. The rim is everted. D. rim: 17.6 cm; d. bowl: 17.4 cm; d. base: 13.1 cm; h.: 7.8 cm. NM Lj, temp. inv. no. 85/15. Lit.: unpublished.

5. Beaker: *Pl. 5: 5; 11: 5*. Site: Ajdovski gradec above Vranje near Sevnica, house F; excavated 1985. Clay tempered with sand; fired brown. Rough surface. D. rim: 5.1 cm; d. beaker: 6.2 cm; d. base: 3.9 cm; h.: 4.7 cm. NM Lj, temp. no. 85/23. Lit.: unpublished.

6. Pot: *Pl. 5: 6; 11: 6*. Site: Ajdovski gradec above Vranje near Sevnica, house G; excavated 1984. Clay tempered with sand, surface rough and mottled, dark grey to light brown. The spherical pot was hand-thrown. The rim is everted and the base hemispherical. D. rim: 11.9 cm; d. pot: 14.9 cm; d. base: 10.1 cm; h.: 12.5 cm. NM Lj, inv. no. R 14502. Lit.: unpublished.

7. Pot: *Pl. 5: 7; 11: 7*. Site: Ajdovski gradec above Vranje near Sevnica, house G; excavated 1986. Clay tempered with sand, surface rough and mottled, dark grey to light brown. The cylindrical pot was hand-thrown. The rim is everted. D. rim: 15.8 cm; d. pot: 14.4 cm; d. base: 10.5 cm; h.: 19.7 cm. NM Lj, inv. no. R 14641. Lit.: unpublished.

D. Small Amphorae (*Spatheia*)

1. Amphora: *Pl. 6: 1; 12: 1*. Site: Ajdovski gradec above Vranje near Sevnica, house A, room II; excavated 1974. Refined clay, fired grey. The surface is smoothed, the rim collared, the base conical. D. rim: 6.8 cm; d. amphora: 11.9 cm; h.: 44.8 cm. NM Lj, inv. no. R 11709. Lit.: Knific 1979, 735, Fig. 52.

2. Amphora fragments: *Pl. 6: 2-4*. Site: Ajdovski gradec above Vranje near Sevnica, between the upper church and house D; excavated 1980. Refined clay, exterior yellow-grey, interior fired brick red. Handle, shoulder with handle attachment, and part of the body. Dimensions of the largest fragment: 6.75 x 3.9 cm. NM Lj, inv. no. R 15694. Lit.: unpublished.

3. Amphora: *Pl. 6: 5*. Site: Ajdovski gradec above Vranje near Sevnica, house A, room II; excavated 1974. Refined clay, fired grey. The surface is smoothed, the base conical; the rim and part of the neck are missing. D.: 11.5 cm; preserved h.: 40.7 cm. NM Lj, inv. no. R 11711. Lit.: Knific 1979, 735, Fig. 54.

4. Amphora: *Pl. 6: 6; 12: 2*. Site: Ajdovski gradec above Vranje near Sevnica, house B; excavated 1974. Refined clay; fired yellow-grey, core brick red. The surface is smoothed, collared rim, two handles, conical base. D. rim: 7.6 cm; d. amphora: 11.9 cm; h.: 42.8 cm. NM Lj, inv. no. R 11819. Lit.: Knific 1979, 746, Fig. 159.

5. Amphora rim: *Pl. 6: 7*. Site: Ajdovski gradec above Vranje near Sevnica, between house A and house D; excavated 1980. Refined clay; fired grey. The rim was collared, the handle bases are visible. Dimensions: 4.9 x 3.9 cm. NM Lj, inv. no. R 15745. Lit.: unpublished.

Fig. 16: Drnovo near Krško, a jug with a handle and burnished decoration (NM Lj, inv. no. R 1237).

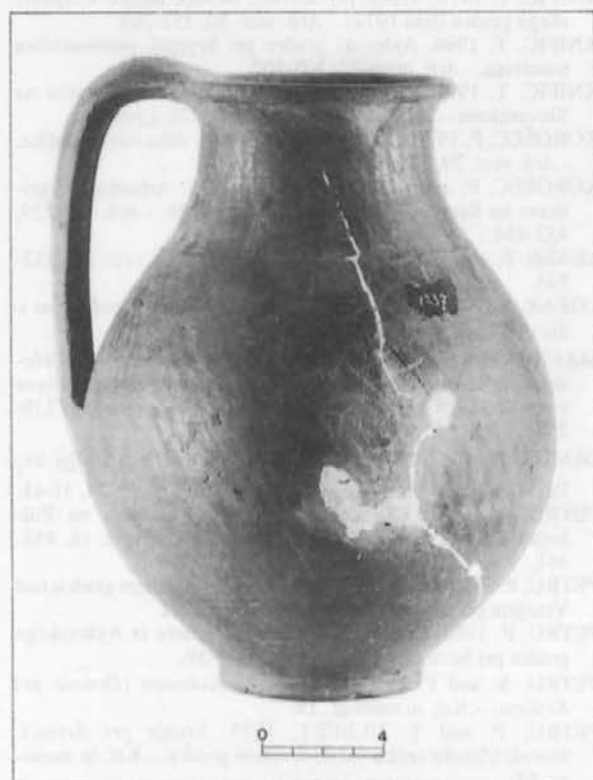
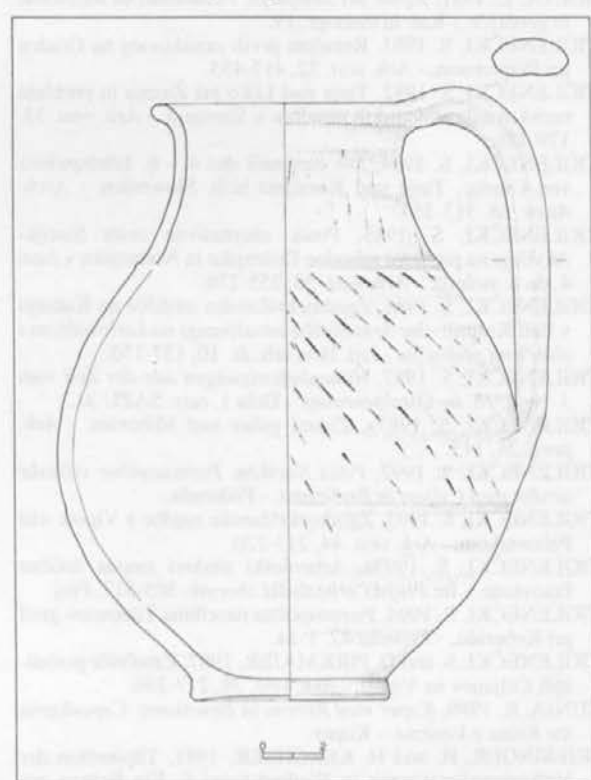


Fig. 17: Drnovo near Krško, a drawing of the handled jug with burnished decoration (NM Lj, inv. no. R 1237).



6. Amphora fragments: *Pl.* 6: 8. Site: Ajdovski gradec above Vranje near Sevnica, house C; excavation 1980-82. Refined clay; fired reddish yellow. The surface is smoothed; part of the body and base of the amphora are preserved. Height of the largest sherd: 7.8 cm. NM Lj, inv. no. R 12010. Lit.: unpublished.

7. Amphora fragment: *Pl.* 6: 9. Site: Ajdovski gradec above Vranje near Sevnica, house A, room I; excavated 1974. Refined clay; fired yellow-grey. The surface is smoothed; the shoulder and part of the amphora body are preserved. D.: 10.5 cm; preserved h.: 17.8 cm. NM Lj, inv. no. R 11710. Lit.: Knific 1979, 735, Fig. 53.

8. Amphora: *Pl.* 7: 1; 12: 3. Site: Ajdovski gradec above Vranje near Sevnica, house G; excavated 1986. Refined clay; surface yellow-grey, interior fired brick red. The surface is smoothed, collared rim, both handles are missing, the base is conical; the amphora is slightly flattened. D. rim: 7.3 cm; d. amphora: 11.6 cm; h.: 41.0 cm. NM Lj, inv. no. R 14648. Lit.: unpublished.

9. Amphora rim: *Pl.* 7: 2. Site: Korinjski hrib above Veliki Korinj; excavation 1982-83. Fired grey-red. D. rim: 7.0 cm; h. sherd: 5.6 cm. Temp. location: IZA ZRC SAZU, Ljubljana. Lit.: Ciglenečki 1985, 260, T. 5: 66.

10. Amphora base: *Pl.* 7: 3. Site: Korinjski hrib above Veliki Korinj; excavation 1982-83. Fired grey red. H.: 5.7 cm. Temp. location: IZA ZRC SAZU, Ljubljana. Lit.: Ciglenečki 1985, 260, T. 5: 67.

11. Amphora rim: *Pl.* 7: 4. Site: Rifnik near Šentjur, between the church and the water cistern; excavated 1977. Fired brick red. H.: 3.3 cm. PM Ce, inv. no. 1056. Lit.: Bolta 1981, 21, T. 21: 90.

12. Fragments of an amphora: *Pl.* 7: 5. Site: Križna gora near

Lož, settlement, trench 1; excavated 1962. Refined clay; fired grey. The surface is smoothed, the rim is collared, the handles are merely indicated. D. rim: 6.5 cm; h. of the largest fragment: 22.1 cm. Notranjski muzej (Museum of Inner Carniola), Postojna (NM Po), inv. no. 1410 R. Lit.: Urleb 1974, 69, T. 40: 10.

13. Amphora: *Pl.* 7: 6; 12: 4. Site: Rifnik near Šentjur, house 3; excavated 1976. Refined clay; fired brown-grey. The surface is smoothed, collared rim, two handles (one missing, reconstructed), conical base. D. rim: 7.65 cm; d. amphora: 11.5 cm; h.: 40.5 cm. PM Ce, inv. no. 637. Lit.: Bolta 1981, 22, T. 22: 46; 34: 2.

14. Amphora rim: *Pl.* 7: 7. Site: Križna gora near Lož, settlement, trench 1; excavated 1961. Refined clay, fired grey. Surface smoothed, collared rim, one handle preserved. D. rim: 6.7 cm; preserved h.: 7.9 cm; NM Po, inv. no. 1150 R. Lit.: Urleb 1974, 70, T. 40: 13.

15. Amphora fragment: *Pl.* 7: 8. Site: Križna gora near Lož, settlement, trench 1; excavated 1962. Refined clay; fired light brown. Surface smoothed. The lower part of one handle and part of the body are preserved. Dimensions: 6.0 x 4.9 cm. NM Po, inv. no. 1410 R. Lit.: Urleb 1974, 69, T. 40: 10.

16. Amphora rim: *Pl.* 7: 9. Site: Grad Kieselstein in Kranj, trench 4; excavated 1989. Refined clay; fired brick red. Collared rim. Preserved d.: 7.3 cm; h.: 3.6 cm. Temp. location: ZVNKD Kr. Lit.: unpublished.

17. Amphora: *Pl.* 7: 10; 12: 5. Site: Koper, Kapucinski vrt; excavation 1986-87. Refined clay, tempered with fine sand; fired light brown. Surface smoothed, but rough, collared rim, two handles (one missing, reconstructed), base conical. D. rim: 6.4 cm; h.: 43.2 cm. Pokrajinski muzej (Regional Museum), Koper. Lit.: Cunja 1989, 28, no. 20.

BACHRAN, W. 1975, Das Gräberfeld. - In: Petru P. and T. Ulbert, *Vranje pri Sevnici*. - Kat. in monogr. 12, 99-115.

BIERBRAUER, V. 1987, *In villino-Ibligo in Friaul I. Die römische Siedlung und das spätantik-frühmittelalterliche Castrum*. - Münch. Beitr. z. Vor- u. Frühgesch. 33.

BOLTA, L. 1970-1971, Poznoantično grobišče na Rifniku pri Šentjurju. - *Arh. vest.* 21-22, 127-140.

BOLTA, L. 1981, *Rifnik pri Šentjurju. Poznoantična naselbina in grobišče*. - Kat. in monogr. 19.

CIGLENEČKI, S. 1981, Rezultati prvih raziskovanj na Gradcu pri Prapretnem. - *Arh. vest.* 32, 417-453.

CIGLENEČKI, S. 1982, Tinje nad Loko pri Žusmu in problem raziskovanja slovanskih naselbin v Sloveniji. - *Arh. vest.* 33, 179-188.

CIGLENEČKI, S. 1984, Die Keramik des 4. - 6. Jahrhunderts von Gradec, Tinje und Korinjski hrib, Slowenien. - *Arch. Austr.* 68, 313-350.

CIGLENEČKI, S. 1985, Potek alternativne ceste Siscija-Akvileja na prostoru zahodne Dolenjske in Notranjske v času 4. do 6. stoletja. - *Arh. vest.* 36, 255-276.

CIGLENEČKI, S. 1986, Zgodnjekrščansko središče na Kučarju v Beli Krajini. - In: *Arheološka istraživanja na karlovačkom i sisačkom području*. - Izd. Hrv. arh. dr. 10, 137-150.

CIGLENEČKI, S. 1987, Höhenbefestigungen aus der Zeit vom 3. bis 6. Jh. im Ostalpenraum. - *Dela I. razr.* SAZU 31.

CIGLENEČKI, S. 1987a, Zidani gaber nad Mihovim. - *Arh. preg.* 28, 143.

CIGLENEČKI, S. 1992, *Pólis Norikón. Poznoantične višinske urdne med Celjem in Brežicami*. - Podsreda.

CIGLENEČKI, S. 1993, Zgodnjekrščanske najdbe z Vipote nad Pečovnikom. - *Arh. vest.* 44, 213-220.

CIGLENEČKI, S. 1993a, Arheološki sledovi zatona antične Petovione. - In: *Ptujski arheološki zbornik*, 505-517, Ptuj.

CIGLENEČKI, S. 1994, Poznoantična naselbina Tonovecov grad pri Kobaridu. - *Kronika* 42, 1-14.

CIGLENEČKI, S. and D. PIRKMAJER, 1987, Zatočišče poslednjih Celjanov na Vipoti. - *Arh. vest.* 38, 217-236.

CUNJA, R. 1989, *Koper med Rimom in Benetkami. Capodistria tra Roma e Venezia*. - Koper.

FRIESINGER, H. and H. KERCHLER, 1981, Töpferöfen der Völkerwanderungszeit in Niederösterreich. Ein Beitrag zur

völkerwanderungszeitlichen Keramik (2. Hälfte 4.-6. Jahrhundert) in Niederösterreich, Oberösterreich und dem Burgenland. - *Arch. Austr.* 65, 193-266.

GABROVEC, S. 1966, Latensko obdobje na Gorenjskem. - *Arh. vest.* 17, 243-262.

HESSEN, O. 1968, *Die langobardische Keramik aus Italien*. - Wiesbaden.

KNIFIC, T. 1979, Vranje pri Sevnici. Drobne najdbe z Ajdovskega gradca (leto 1974). - *Arh. vest.* 30, 732-763.

KNIFIC, T. 1986, Ajdovski gradec pri Sevnici, poznoantična naselbina. - *Arh. preg.* 27, 105-107.

KNIFIC, T. 1991, Arheologija o prvih stoletjih krščanstva na Slovenskem. - In: *Pismo brez pisave*, 11-32, Ljubljana.

KOROŠEC, P. 1978, Svete Gore nad Sotlo v času zatona antike. - *Arh. vest.* 29, 519-528.

KOROŠEC, P. and J. KOROŠEC Jr., 1978, Arheološke raziskave na Svetih Gorah ob Sotli v letu 1974. - *Arh. vest.* 29, 432-454.

LEBEN, F. and A. VALIČ, 1978, Ajdna. - *Arh. vest.* 29, 532-543.

LOŽAR, R. 1939, Staroslovansko in srednjeveško lončarstvo v Sloveniji. - *Glas. Muz. dr. Slov.* 20, 180-225.

MACKENSEN, M. 1992, Amphoren und Spatheia von Golemanovo Kale. - In: S. Uenze, *Die Spätantiken Befestigungen von Sadovec*. - Münch. Beitr. z. Vor- u. Frühgesch. 43, 239-254.

OSMUK, N. 1982, Konservacija rimskega vodnega stolpa Sv. Pavel pri Vrtovinu v Vipavski dolini. - *Var. spom.* 24, 31-41.

PETRU, P. 1967a, Zgodnjekrščanska naselbina na Polhograjski gori nad Polhovim gradcem. - *Arh. vest.* 18, 453-461.

PETRU, P. 1979, Stavba A (episkopij) na Ajdovskem gradcu nad Vranjem pri Sevnici. - *Arh. vest.* 30, 726-731.

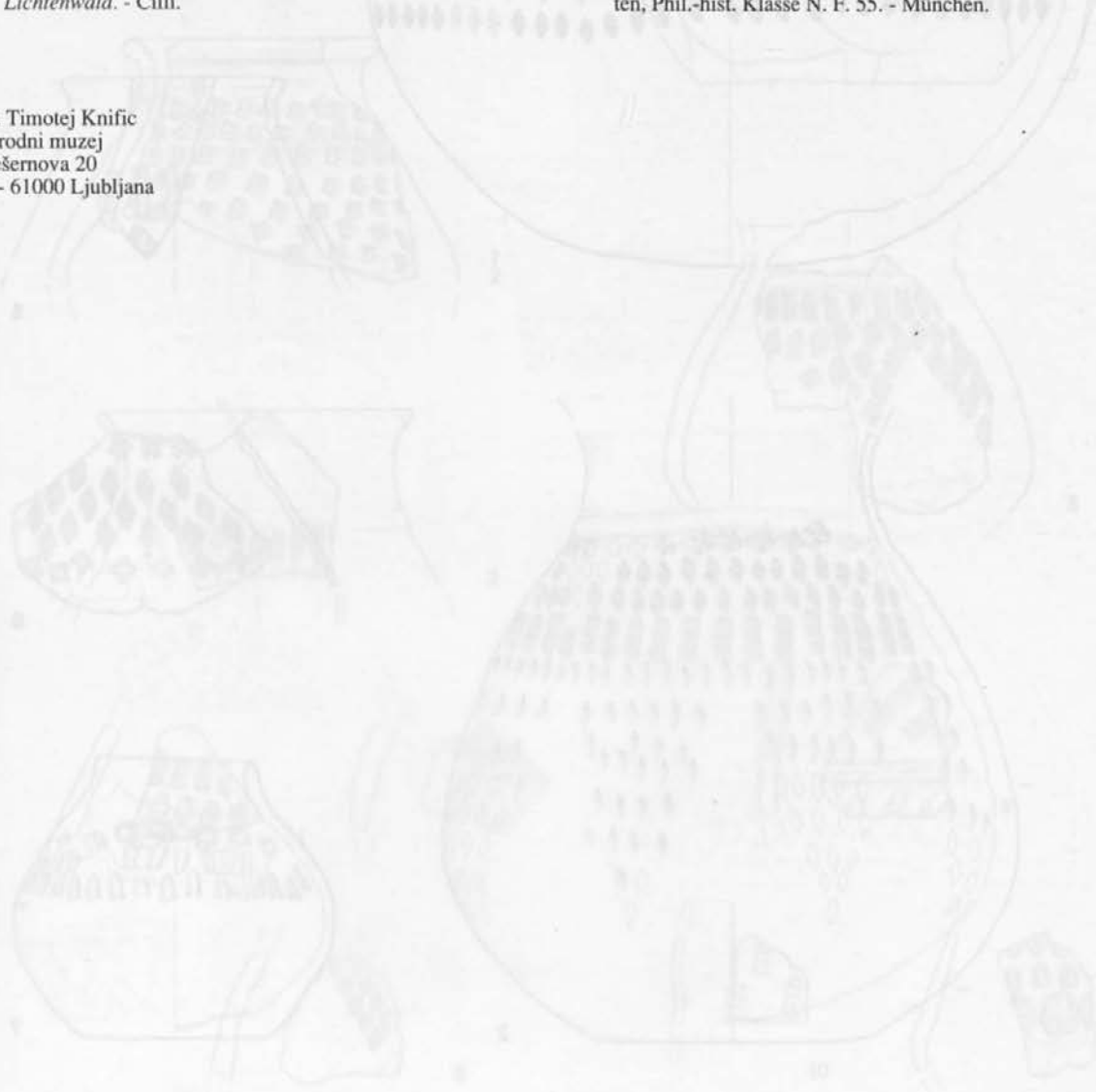
PETRU, P. 1980, Upodobitev pisarja na reliefu iz Ajdovskega gradca pri Sevnici. - *Linguistica* 20, 49-59.

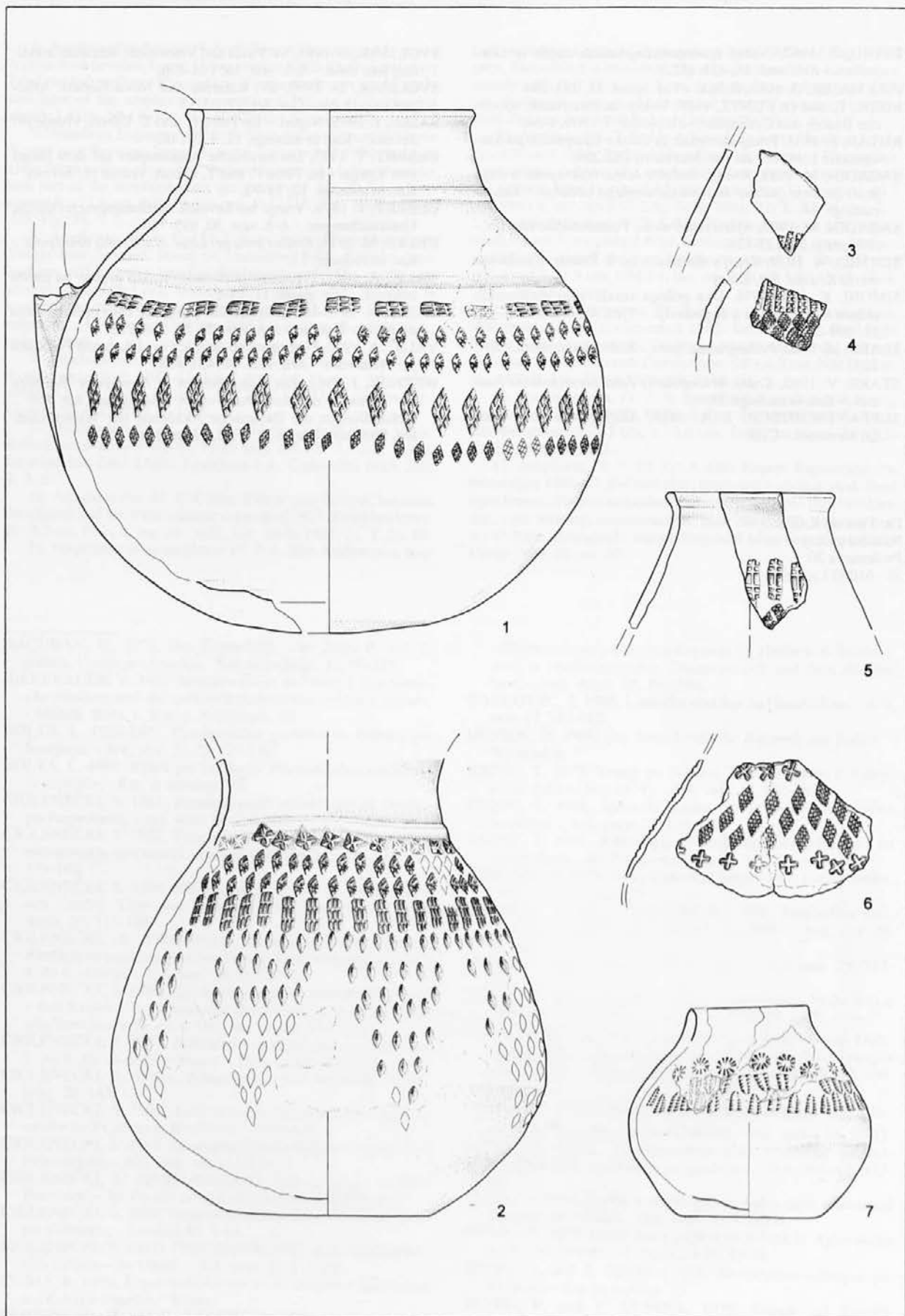
PETRU, S. and P. PETRU, 1978, *Neviodunum (Drnovo pri Krškem)*. - Kat. in monogr. 15.

PETRU, P. and T. ULBERT, 1975, *Vranje pri Sevnici. Starokrščanske cerkve na Ajdovskem gradcu*. - Kat. in monogr. 12.

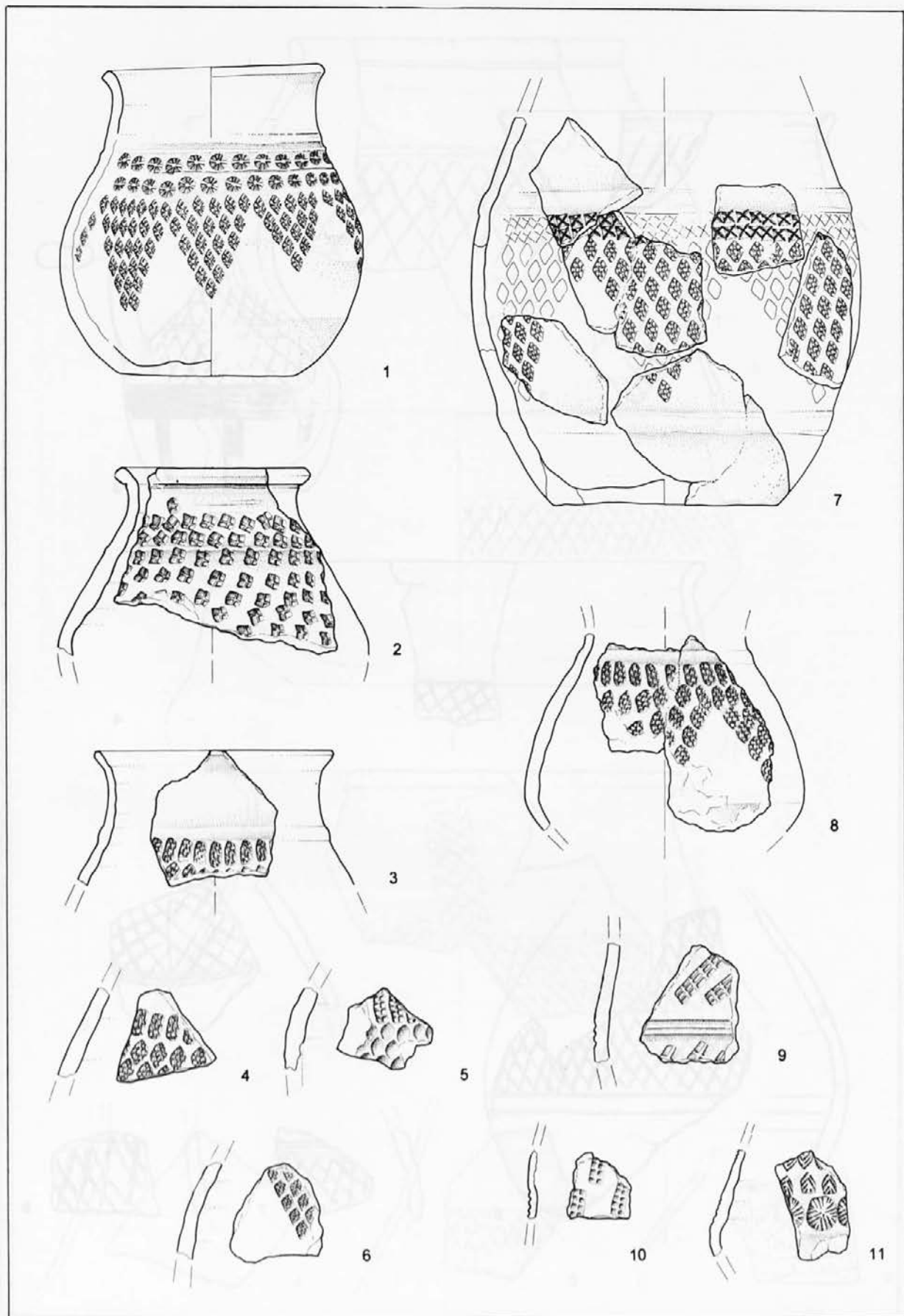
- PETRU, S. 1967, Nekaj zgodnesrednjeveških najdb iz Gorjancev. - *Arh. vest.* 18, 435-452.
- PIRKMAJER, D. 1986, Rifnik. - *Var. spom.* 28, 283-284.
- RIEDL, E. and O. CUNTZ, 1910, Uranje in Steiermark, römische Bauten und Grabmäler. - *Jb. Altkde* 3, 1909, 1-34.
- RUTAR, S. 1891, Prazgodovinske in rimske izkopanine po Slovenskem I. 1890. - In: *Let. Mat slov.*, 182-209.
- SAGADIN, M. 1988, Kranj - križišče Iskra. Nekropola iz časa preseljevanja ljudstev in staroslovanskega obdobja. - Kat. in monogr. 24.
- SAGADIN, M. 1987, Ajdna nad Potoki. Poznoantično naselje. - *Arh. preg.* 28, 123-124.
- SCHMID, W. 1939, Kranj v davnini. - In: J. Žontar, *Zgodovina mesta Kranja*, 3-8, Kranj
- SIMONI, K. 1977-1978, Dva priloga istraživanju germanskih nalaza seobe naroda u Jugoslaviji. - *Vjes. Arh. muz. Zag.* 10-11, 209-233.
- SLABE, M. 1980, *Polhograjska gora*. - Kult. in nar. spom. Slov. 103.
- STARE, V. 1980, *Kranj, nekropola iz časa preseljevanja ljudstev*. - Kat. in monogr. 18.
- SUPPANTSCHITSCH, J. A. 1818, *Ausflug von Cilli nach Lichtenwald*. - Cilli.
- SVOLJŠAK, D. 1985, Sv. Pavel nad Vrtovinom. Rezultati sondiranja leta 1966. - *Arh. vest.* 36, 195-236.
- SVOLJŠAK, D. 1990, Sv. Katarina nad Novo Gorico. Arheološka podoba. - *Gor. let.* 17, 33-55.
- ŠAŠEL, J. 1975, Napisi. - In: Petru P. and T. Ulbert, *Vranje pri Sevnici*. - Kat. in monogr. 12, 133-148.
- ULBERT, T. 1975, Die kirchliche Baukomplex auf dem Hügel von Vranje. - In: Petru P. and T. Ulbert, *Vranje pri Sevnici*. - Kat. in monogr. 12, 21-72.
- ULBERT, T. 1979, Vranje bei Sevnica. Siedlungsgeschichtliche Untersuchungen. - *Arh. vest.* 30, 695-714.
- URLEB, M. 1974, *Križna gora pri Ložu. Halštatska nekropola*. - Kat. in monogr. 11.
- VALIČ, A. 1967, Prezentacija staroslovanskih grobov na mestu odkritja. - *Var. spom.* 11, 13-17.
- VALIČ, A. 1970-1971, Keramični posodi iz časa preseljevanja narodov v Kranju. - *Arh. vest.* 21-22, 288-292.
- VALIČ, A. 1990, Poznoantično najdišče sv. Jakob nad Potočami pri Preddvoru. - *Arh. vest.* 41, 431-438.
- WERNER, J. 1962, *Die Langobarden in Pannonien. Beiträge zur Kenntnis der langobardischen Bodenfunde vor 568*. - Abhandlungen der Bayerische Akademie der Wissenschaften, Phil.-hist. Klasse N. F. 55. - München.

Dr. Timotej Knific
Narodni muzej
Prešernova 20
SI - 61000 Ljubljana

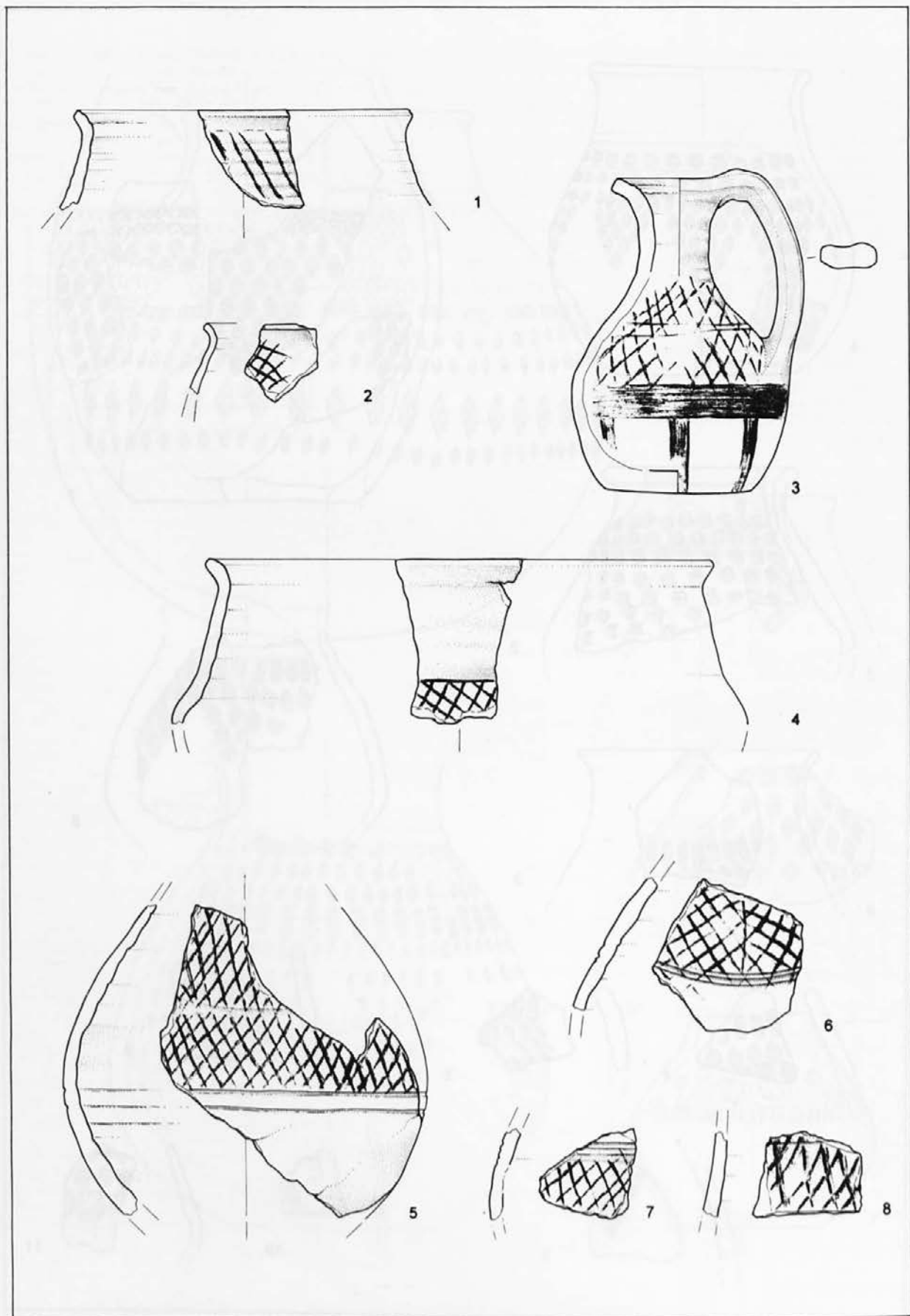




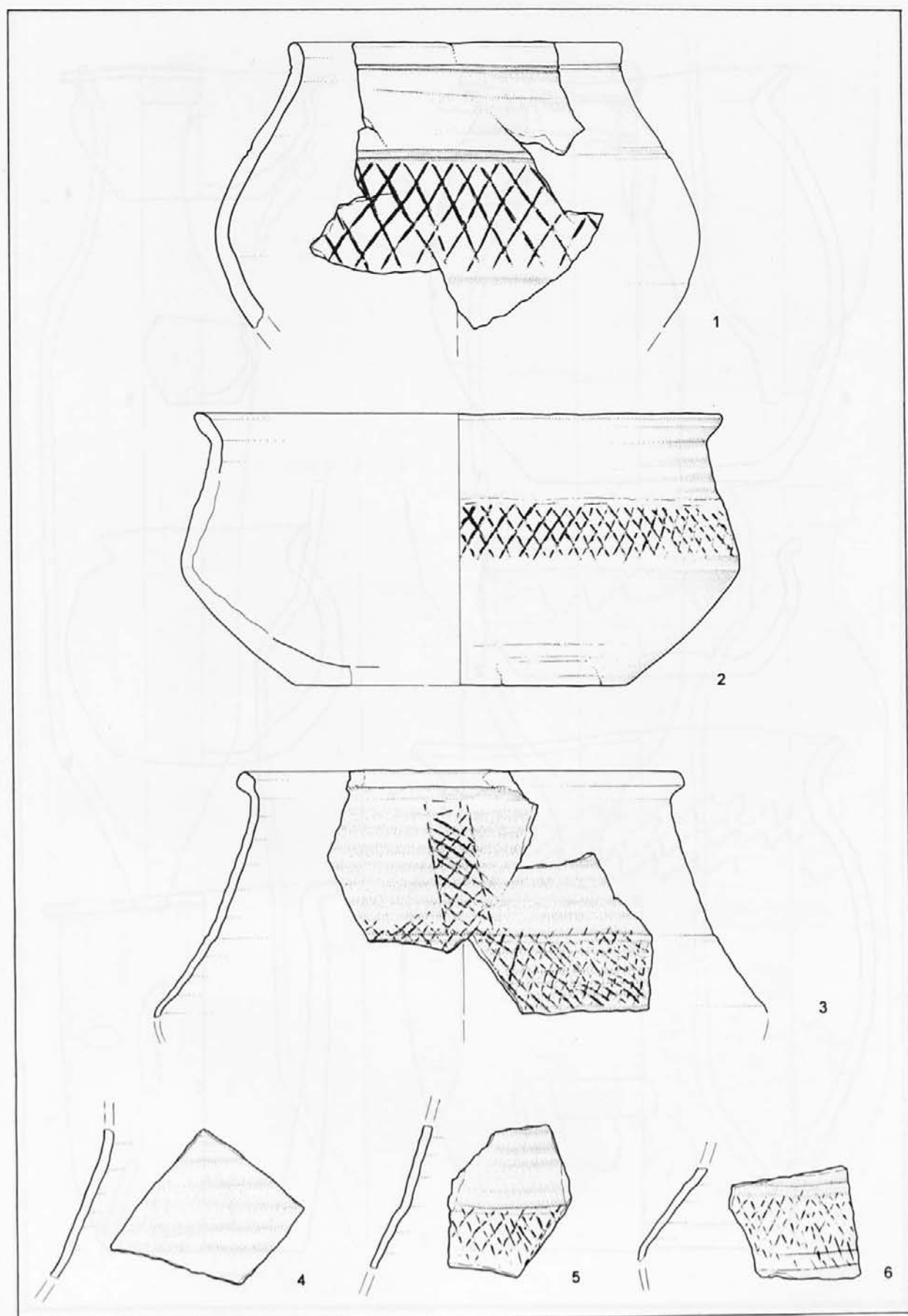
Pl. I: Ajdovski gradec above Vranje near Sevnica (1-5), Vratolom at Gorjanci (6), Rifnik near Šentjur (7). All pottery. Scale = 1:2.



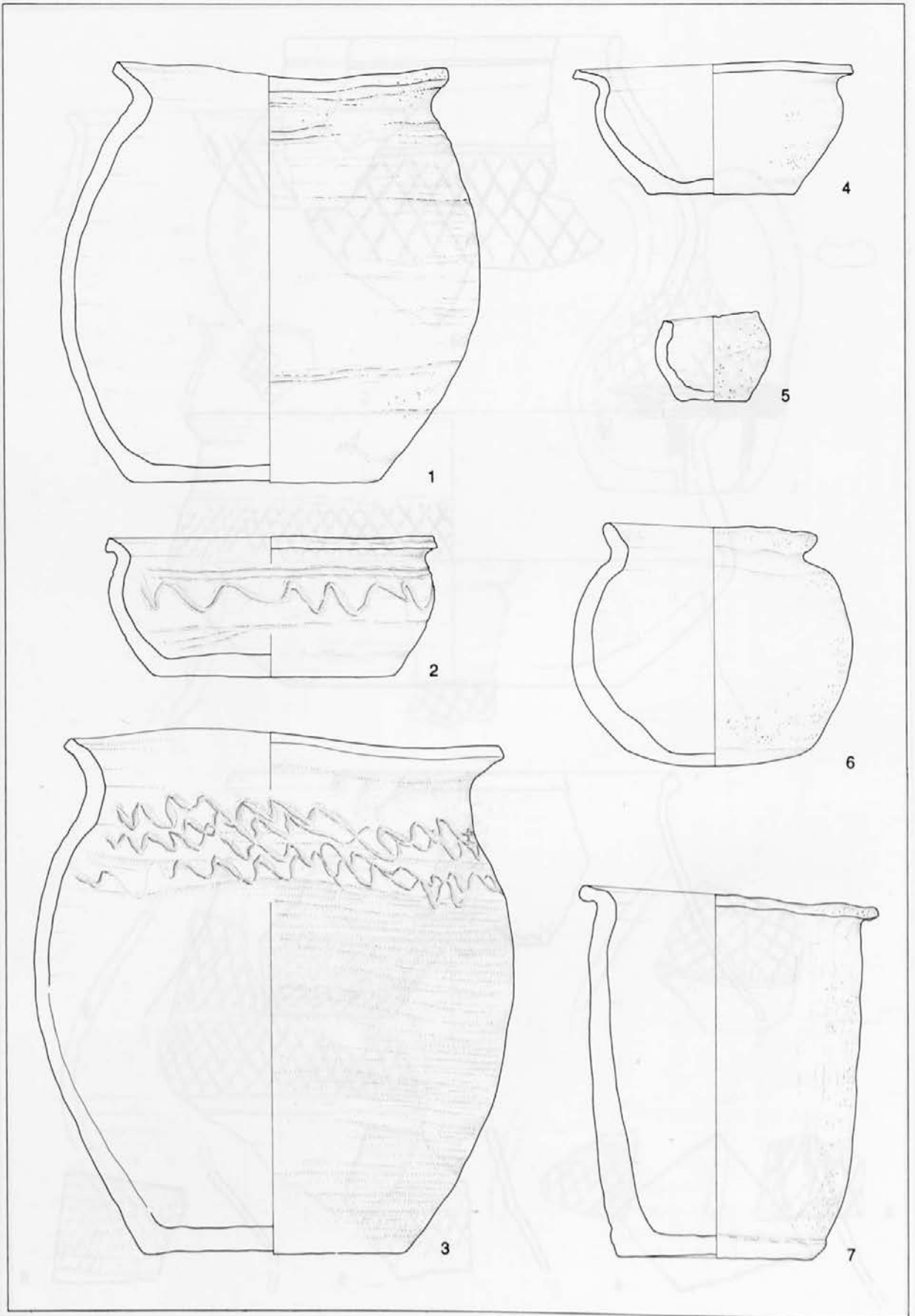
Pl. 2: Rifnik near Šentjur (1-7), Lajh at Kranj (8), the parish church in Kranj (9), Kieselstein Castle at Kranj (10, 11). All pottery. Scale = 1:2.



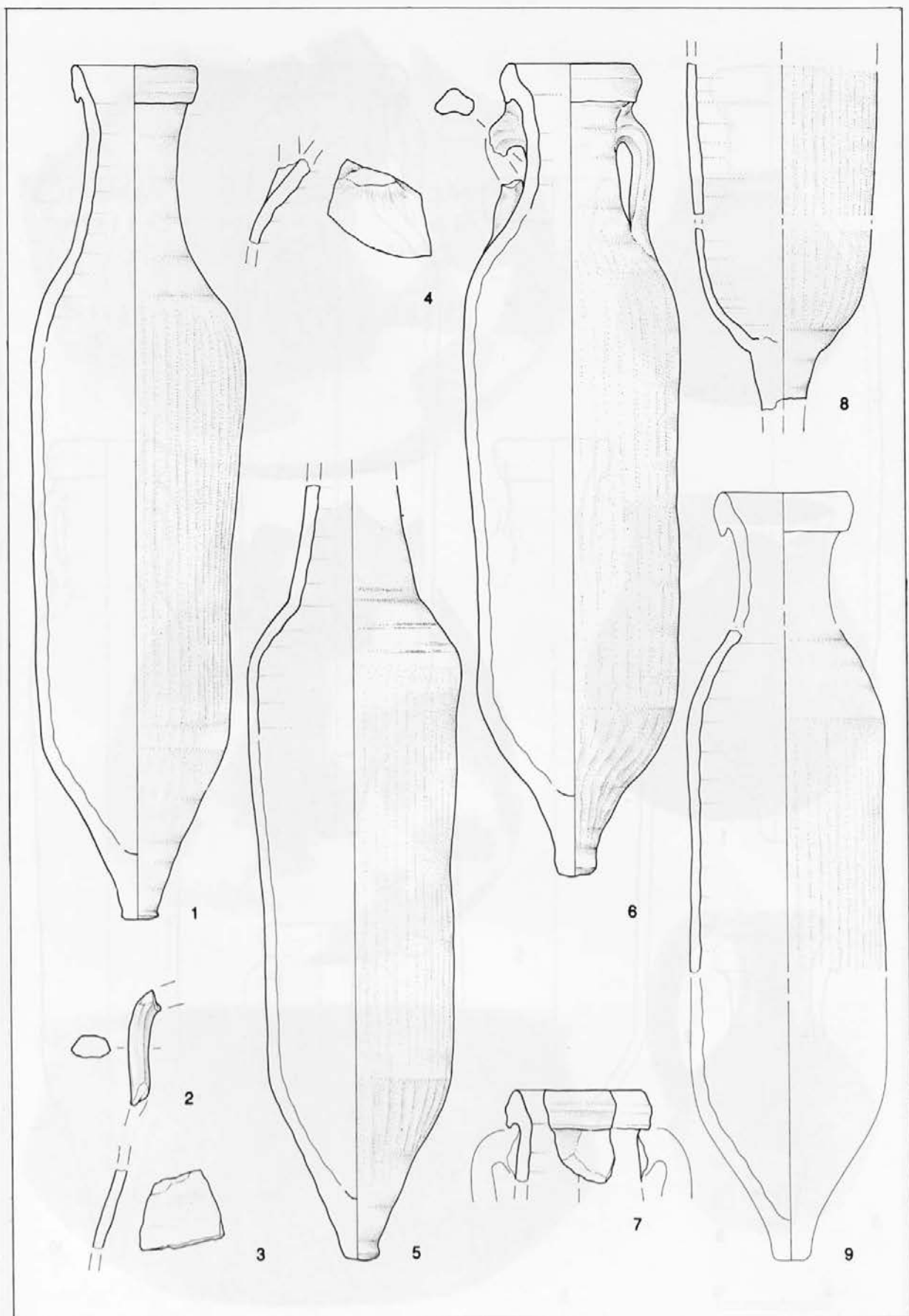
Pl. 3: Ajdovski gradec above Vranje near Sevnica (1, 2), Tinje above Loka near Žusem (3, 4), Rifnik near Šentjur (5-8). All pottery. Scale = 1:2.



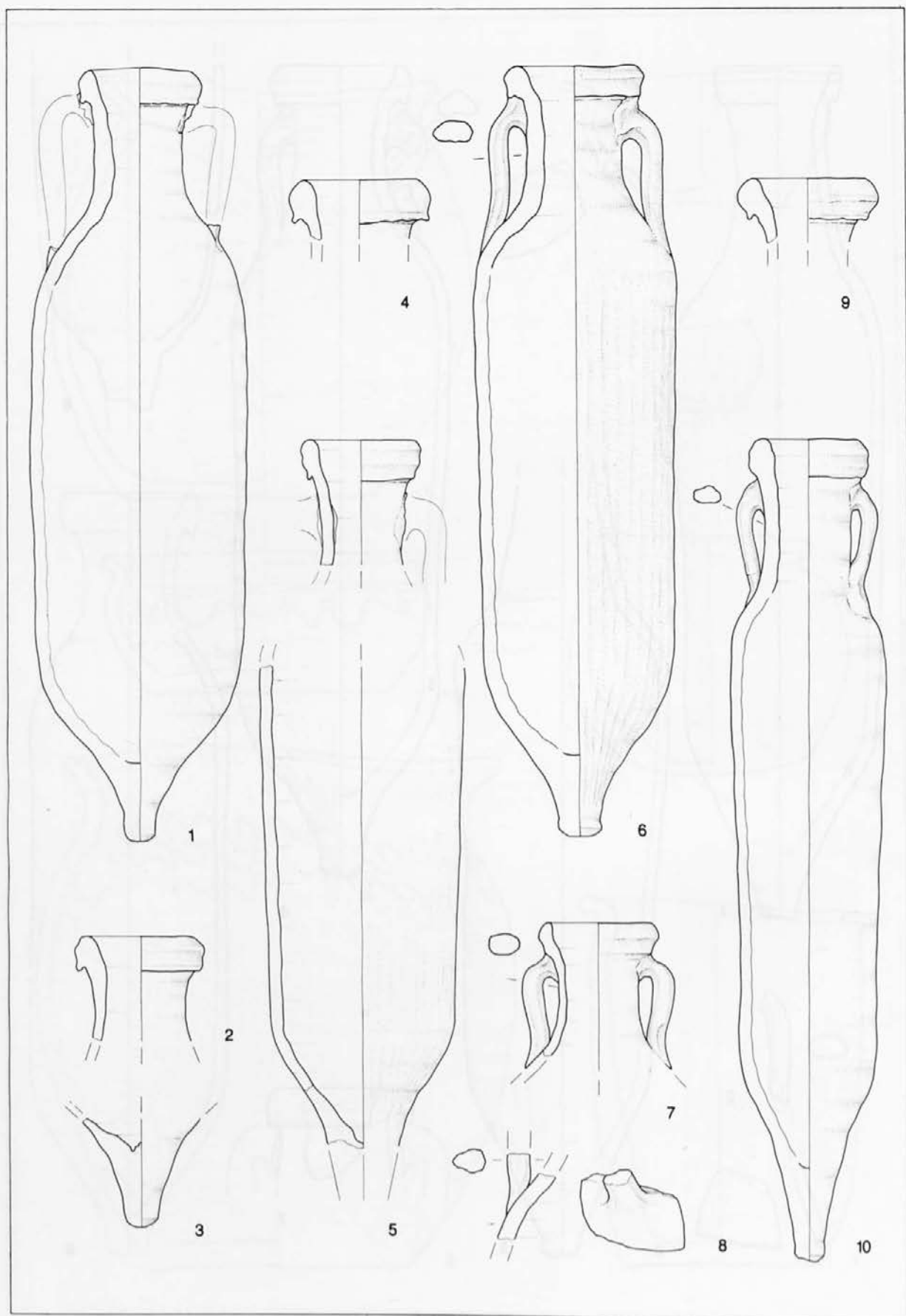
Pl. 4: Rifnik near Šentjur (1), the Town Hall in Kranj (2), Kieselstein Castle in Kranj (3-6). All pottery. Scale = 1:2.



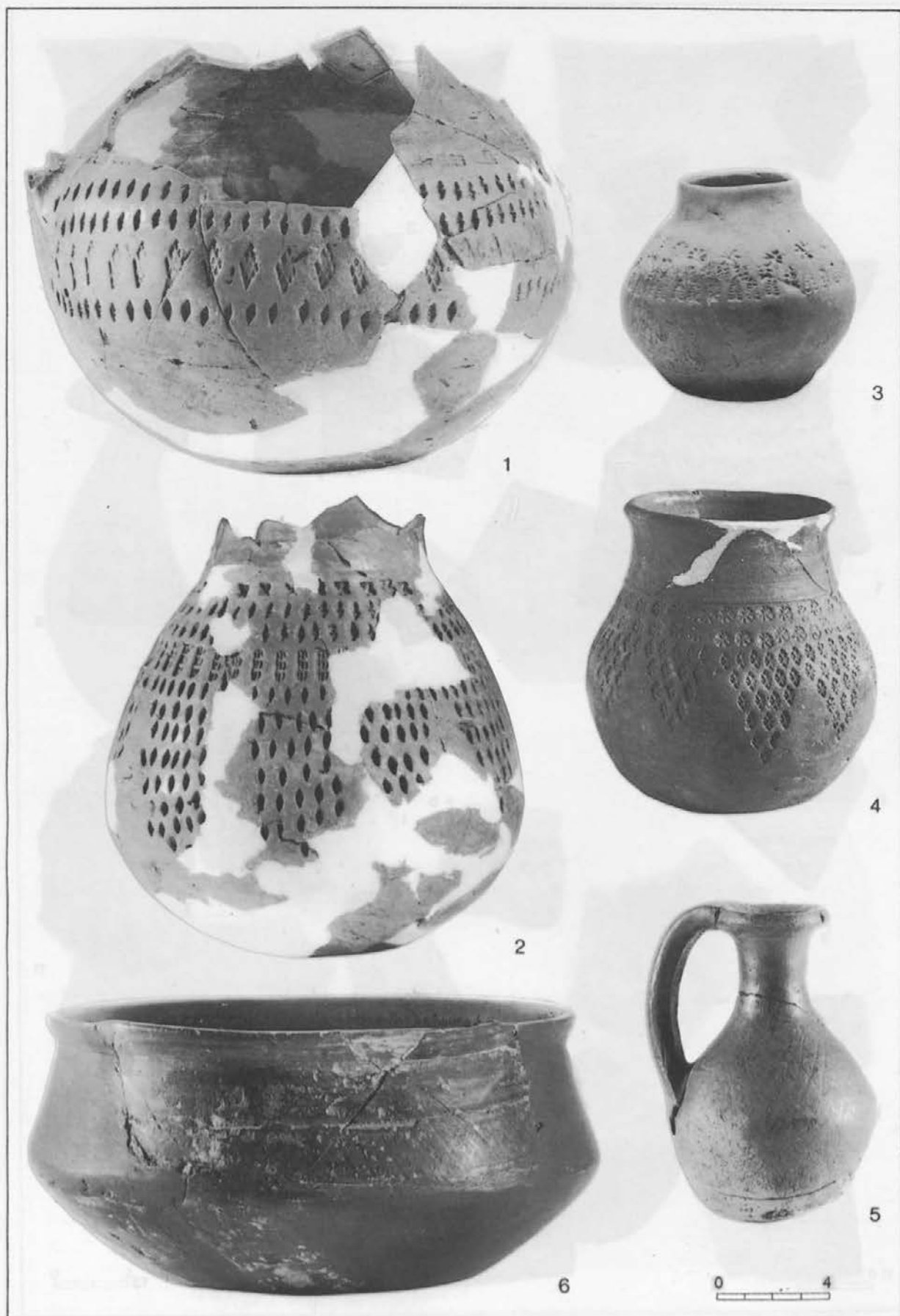
Pl. 5: Ajdovski gradec above Vranje near Sevnica (1-7). All pottery. Scale = 1:3.



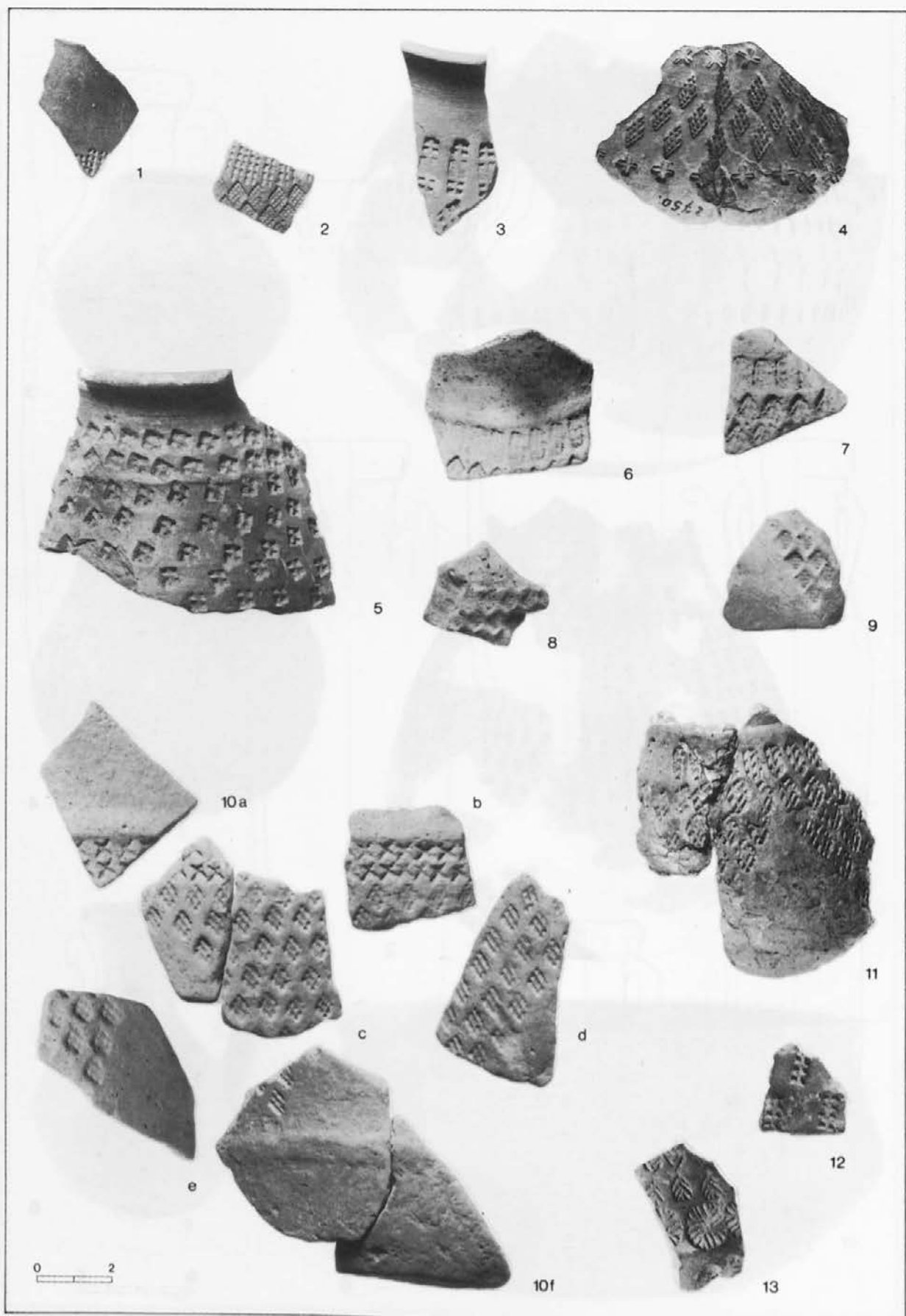
Pl. 6: Ajdovski gradec above Vranje near Sevnica (1-9). All pottery. Scale = 1:3.



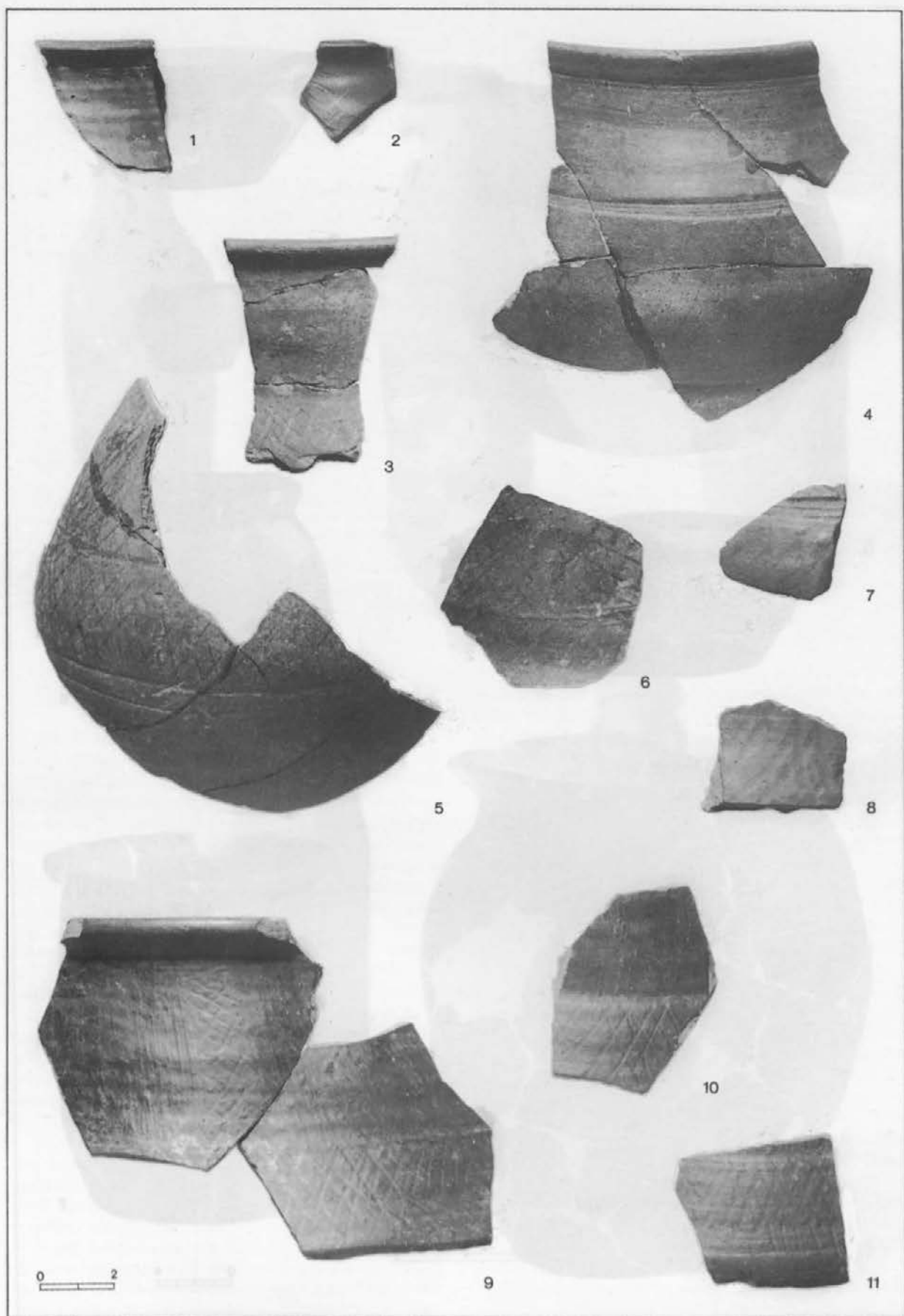
Pl. 7: Ajdovski gradec above Vranje near Sevnica (1), Korinjski hrib above Veliki Korinj (2, 3), Rifnik near Šentjur (4, 6), Križna gora near Lož (5, 7, 8), Kieselstein Castle in Kranj (9), Koper (10). All pottery. Scale = 1:3.



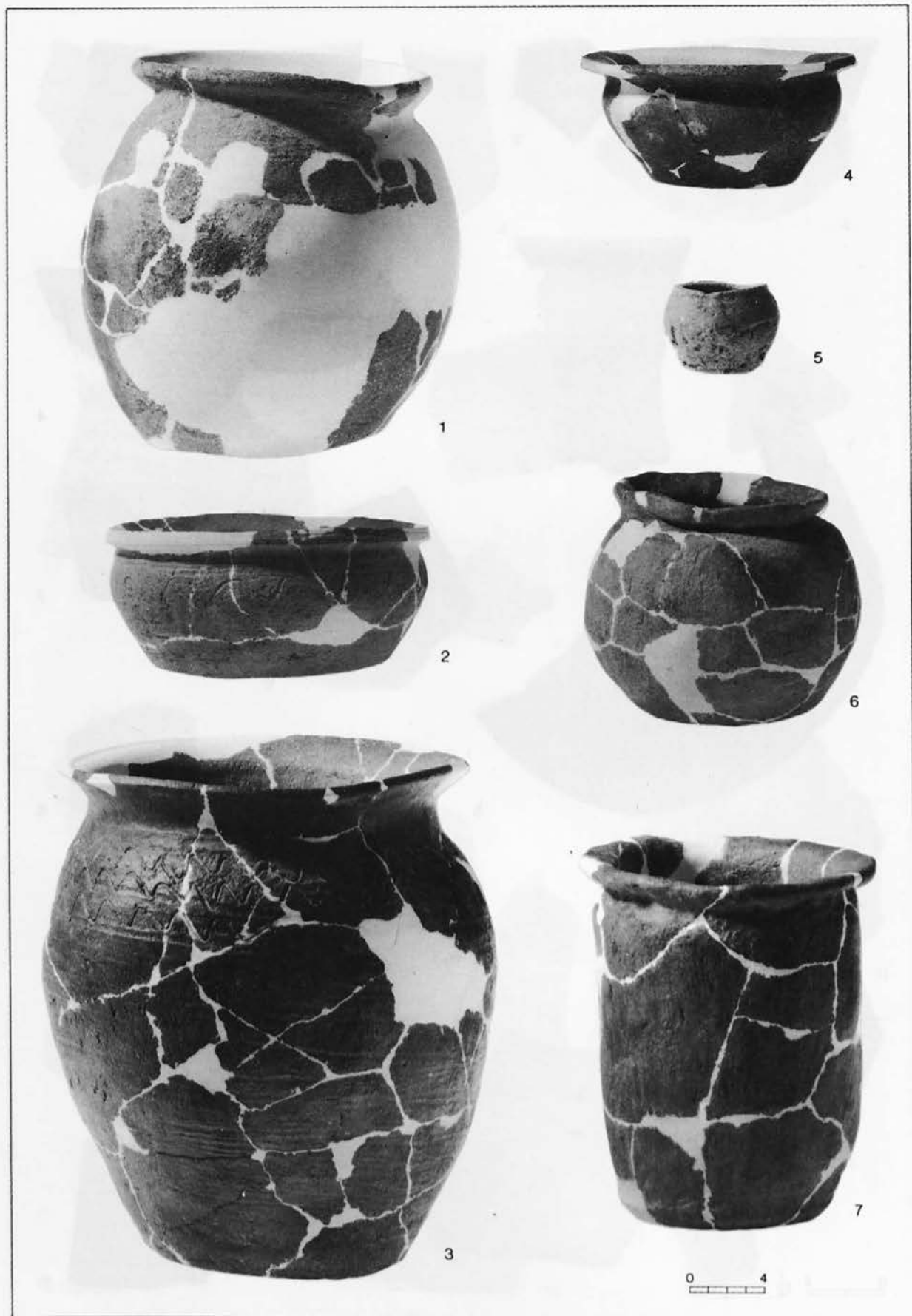
Pl. 8: Ajdovski gradec above Vranje near Sevnica (1, 2), Rifnik near Šentjur (3, 4), Tinje above Loka near Žusem (5), the Town Hall in Kranj (6). All pottery.



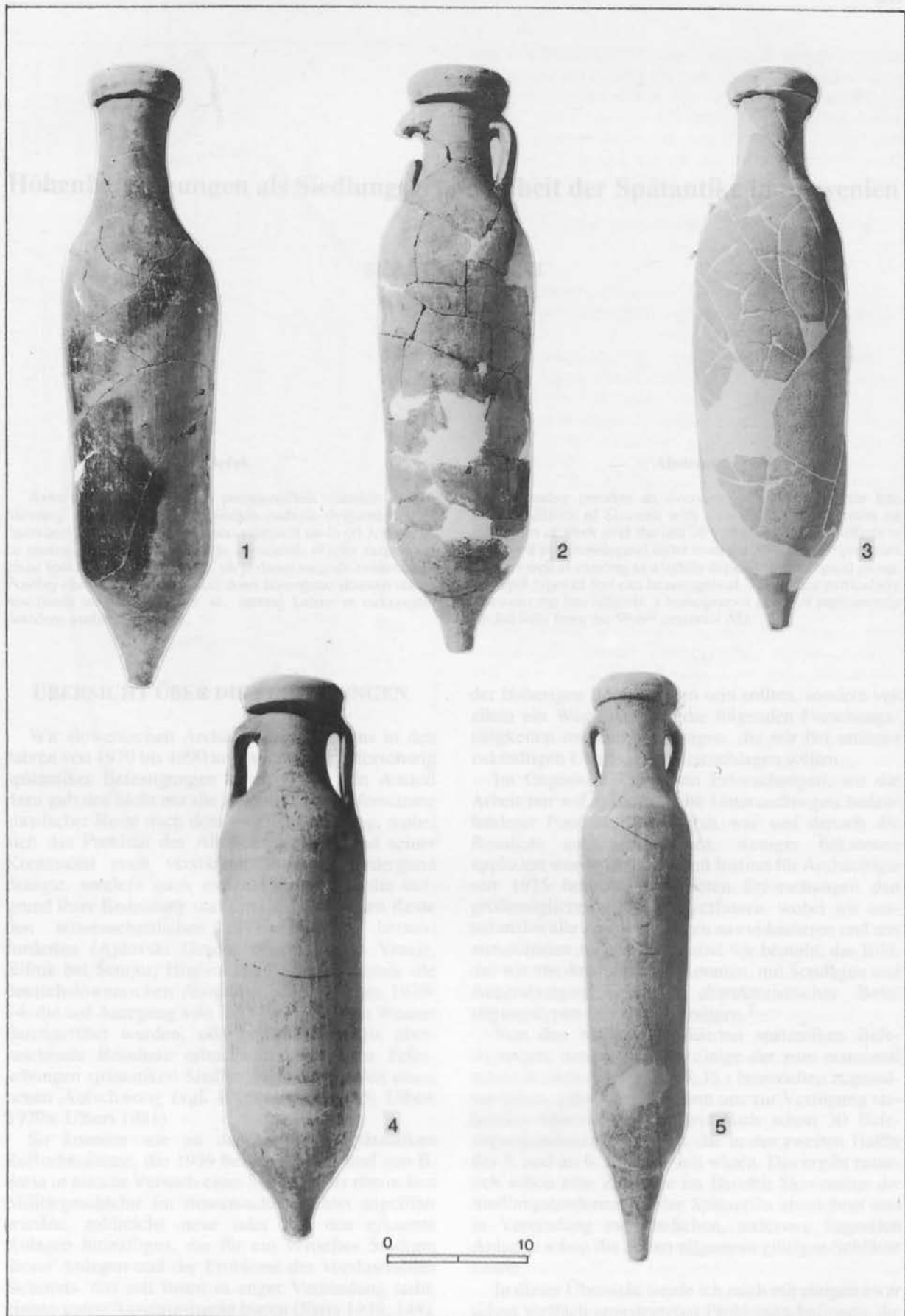
Pl. 9: Ajdovski gradec above Vranje near Sevnica (1-3), Vratolom at Gorjanci (4), Rifnik near Šentjur (5-10 a-f), Lajh at Kranj (11), Kieselstein Castle at Kranj (12, 13). All pottery.



Pl. 10: Ajdovski gradec above Vranje near Sevnica (1, 2), Tinje above Loka near Žusem (3), Rifnik near Šentjur (4-8), Kieselstein Castle at Kranj (9-11). All pottery.



Pl. 11: Ajdovski gradec above Vranje near Sevnica (1-7). All pottery.



Pl. 12: Ajdovski gradec above Vranje near Sevnica (1-3), Rifnik near Šentjur (4), Koper (5). All pottery.