

## New finds of the Jezerine-type fibulae from Poland

### Nove najdbe fibul vrste Jezerine iz Poljske

Marcin WOŹNIAK

#### Izveček

Med arheološkimi izkopavanji na najdišču Kleszewo, enem izmed grobišč przeworske kulture na območju vzhodne Mazovije na vzhodu Poljske, so bile v dveh grobovih iz konca poznega predrimskega obdobja odkrite tri fibule vrste Jezerine. Vse tri so atipične oblike s trikotnim lokom in v enem primeru z rebrom na spodnjem delu loka. Primerjave jim lahko iščemo v severovzhodni Italiji in južni Panoniji (današnji Slovenija in Hrvaška). Najdbe tovrstnih fibul na območjih severno od Karpatov lahko povežemo s stiki na dolge razdalje, domnevno v zvezi s trgovino z jantarjem.

**Ključne besede:** Poljska; Kleszewo; poznolatsko obdobje; zgodnjorimsko obdobje; przeworska kultura; rimski importi; jantarna pot; fibule vrste Jezerine

#### Abstract

Three Jezerine-type fibulae were found in two graves from the end of the Late Pre-Roman Period during archaeological excavations at the cemetery in Kleszewo in eastern Poland. These are atypical forms with triangular bows and, in one instance, a rib on the lower side of a bow. Parallels to these forms can most often be found in north-eastern Italy and southern Pannonia (modern Slovenia, Croatia). The presence of such Jezerine-type fibulae in the territory north of the Carpathians may be associated with far-reaching links, presumably with the amber trade.

**Keywords:** Poland; Kleszewo; Late La Tène Period; Early Roman Period; Przeworsk Culture; Roman imports; Amber route; Jezerine fibulae

The cemetery in Kleszewo (pow. Pułtusk, PL) in eastern Masovia (*Fig. 1*) is one of the largest and longest utilised necropolises of Late Antiquity in the territory of modern Poland. In the course of years-long excavations,<sup>1</sup> almost 550 graves of

the Przeworsk and Wielbark Cultures dating from the Phase A2 of the Late Pre-Roman to the Early Migration Periods (2<sup>nd</sup> c. BC–4<sup>th</sup>/5<sup>th</sup> c. AD) have been discovered there. Objects of foreign provenance have been recovered from many features, testifying to the relations between the local population and the outside world. Among them, three Jezerine-type fibulae (cf. Adam, Feugère 1982; Demetz 1999, 99–106) found in two Przeworsk Culture graves hold special significance. The first (*Fig. 2: 1*) was found in a grave (no. I/1961

<sup>1</sup> Text prepared as a part of the project “Kleszewo – the largest cemetery of the Przeworsk and Wielbark Cultures in Masovia and Podlachia. Monographic study of the cemetery”, financed by the National Science Centre following the Decision DEC-2013/09/N/HS3/02882.

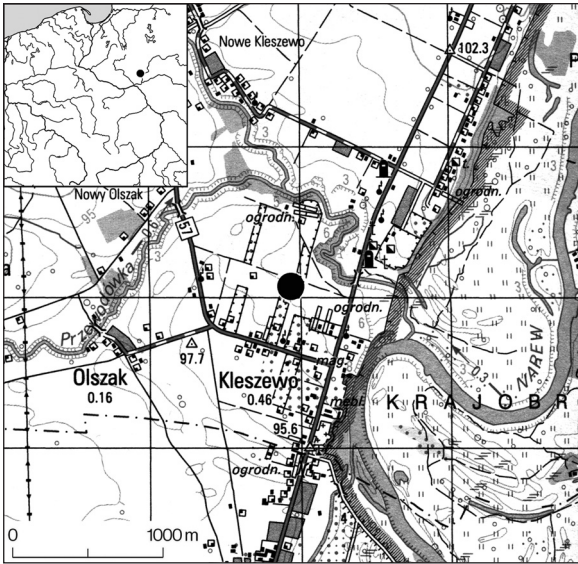


Fig. 1: Location of cemetery at Kleszewo, pow. Pułtusk (Poland).

Sl. 1: Lokacija grobišča Kleszewo, okrožje Pułtusk (Poljska).

hereinafter) discovered by accident and destroyed during gravel extraction in the area of the site.<sup>2</sup> Two more specimens (Fig. 3: 1,2) were recovered from Grave 1047 during archaeological excavation. Jezerine-type fibulae discussed were accompanied by fibulae of local origin, which indicates their relation to the regional chronology. The fibula from Grave I/1961 (Fig. 2: 2) corresponds to type

<sup>2</sup> Grave contents were reconstructed based on archival material, descriptions on the majority of artifacts and (to a lesser degree) information from literature (see Niewęglowski 1972, 238, in which a Jezerine fibula was described as a Nauheim type). What is the most important for further considerations is the fact that both fibulae were found together inside a cremation urn (Fig. 2: 3). Other objects (Fig. 2: 4–10) can be attributed to the same assemblage if not with certainty then with a high degree of probability. It should be emphasised that all artefacts that could have constituted the contents of the grave share similar chronology.

N-a after Thomas Völling (1995, 200, Fig. 24), and the somewhat worse preserved specimen (Fig. 3: 3) from Grave 1047 probably represents type M-a (Völling 1995, 193–197, Fig. 24). In the context of the Przeworsk Culture, both these types act as the primary chronological marker for the Phase A3 of the Late Pre-Roman Period, concurrent with phase LT D2 of central European chronology of the La Tène Culture (Dąbrowska 1988, 35–36, 44–45; ead. 2008, 30–31, Fig. 8; Bochnak 2014, 21–22).

### JEZERINE-TYPE FIBULAE

Fibulae from Kleszewo were made of brass (Tab. 1).<sup>3</sup> All the exemplars have flat bows tapering towards the foot. The fibulae from Grave 1047 (Fig. 3: 1,2) have an oblong, diagonally incised rib along the middle of the bow. The fibula from Grave I/1961 (Fig. 2: 1) also has a rib on the bow, but it is smooth and placed on the lower side of the bow. None of the fibulae survived with their feet.

Jezerine-type fibulae were products of Roman provenance with origins in the traditions of Celtic craftsmanship. They are primarily recorded in Roman Empire territories extending between present-day Catalonia and the Italy (Adam, Feugère 1982, 149–150, Fig. 13; Erice Lacabe 1995, 71–75, Pl. 11: 88–92; Demetz 1999, 102–103, Maps 29–31; Baitinger, Rasbach 2018, 51, Fig. 6). They are

<sup>3</sup> The analysis of the elemental composition of fibulae were performed by using the XRF spectrometer (all specimens) and, in two cases, laser ablation-inductively coupled plasma-mass spectroscopy (LA-ICP-MS). Measurement were taken from surface/patina layer (XRF) and corrosion-free core (LA-ICP-MS) of examined objects. I would thank Mirosław Sawczak from Institute of Fluid Flow Machinery of the Polish Academy of Sciences in Gdańsk (XRF) and Barbara Wagner from Faculty of Chemistry of University of Warsaw (LA-ICP-MS) for performed of analysis.

Tab. 1: Approximate results of the analysis of chemical composition of fibulae from Kleszewo.

Tab. 1: Približni rezultati analiz kemične sestave fibul z najdišča Kleszewo.

Fibula	Method of measurement	Cu	Zn	Sn	Ag	Fe	Pb
1047.1	XRF spectrometry (surface)	86,29	8,99	0,99	0,12	0,55	2,65
	LA-ICP-MS (core)	81,67	17,25	0,48	0,01	0,12	0,44
1047.2	XRF spectrometry (surface)	89,31	5,9	1,63	0,06	1,04	1,74
	LA-ICP-MS (core)	86,65	12,04	0,43	0,01	0,07	0,77
I/1961.1	XRF spectrometry (surface)	88,01	10,23	0,85	0,01	0,65	0,1
	LA-ICP-MS (core)	lack of analysis					

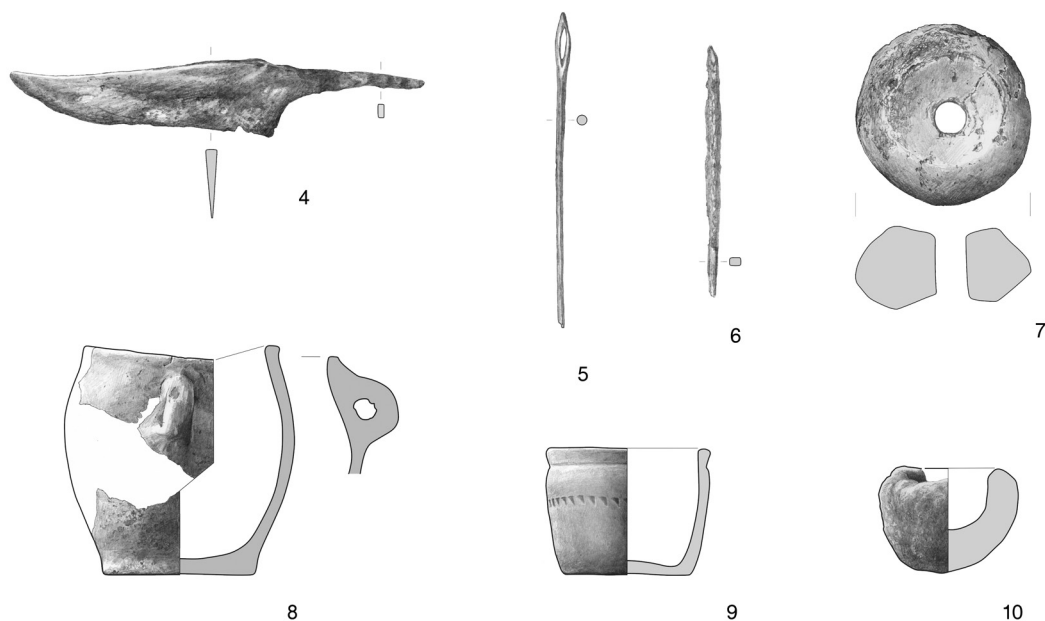
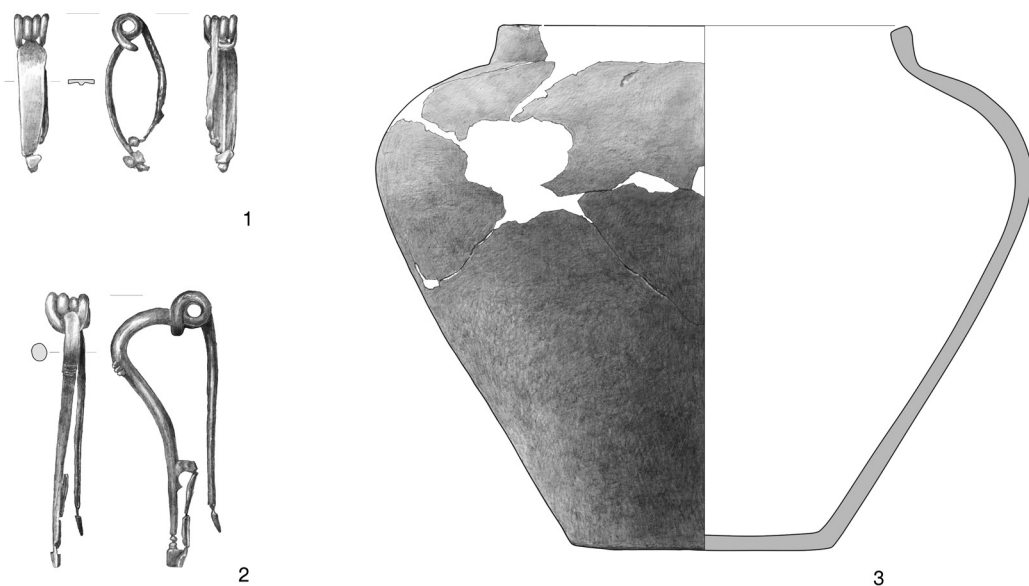


Fig. 2: Kleszewo. Inventory (1–3) and possible inventory (4–10) of Grave I/1961. 1 brass; 2,4–6 iron; 3,7–10 ceramics. Scale 1,2,4–6 = 1:2; all the rest = 1:4.

Sl. 2: Kleszewo. Grobni pridatki (1–3) in domnevni grobni pridatki (4–10) iz groba I/1961. 1 medenina; 2,4–6 železo; 3,7–10 keramika. M. 1,2,4–6 = 1:2; ostalo = 1:4.

also numerous in the eastern Alpine region and on the western side of the Balkan Peninsula, where they might also have been manufactured (Gostenčnik 2003; Glogović, Mengušić 2007; Sedlmayer 2009, 17; Petković 2010, 38, 41; Drnić 2013, 47–51; Drnić, Tonc 2014, 192–196). Several specimens were found near the oppidum in Bratislava (Čambal et al. 2015, 232, 234, Fig. 6: 22–28; 8: 5; Čambal 2017, 93–95, Fig. 5, Map 5), in the area occupied by the Púchov Culture

(Pieta 1982, 32–34; Łuczkiwicz 2012, 113), and in the regions inhabited by the Dacians (Rustoiu 1997, 51, Fig. 48; Rustoiu, Gheorghiu 2010). An exceptional concentration of Jezerine-type fibulae was recorded in the area to the north of the Carpathian Mountains, the south-eastern part of the Baltic region in particular (see below). Fibulae of this type are found extremely rarely outside the areas listed above (recently Baitinger, Rasbach 2018, Fig. 6).

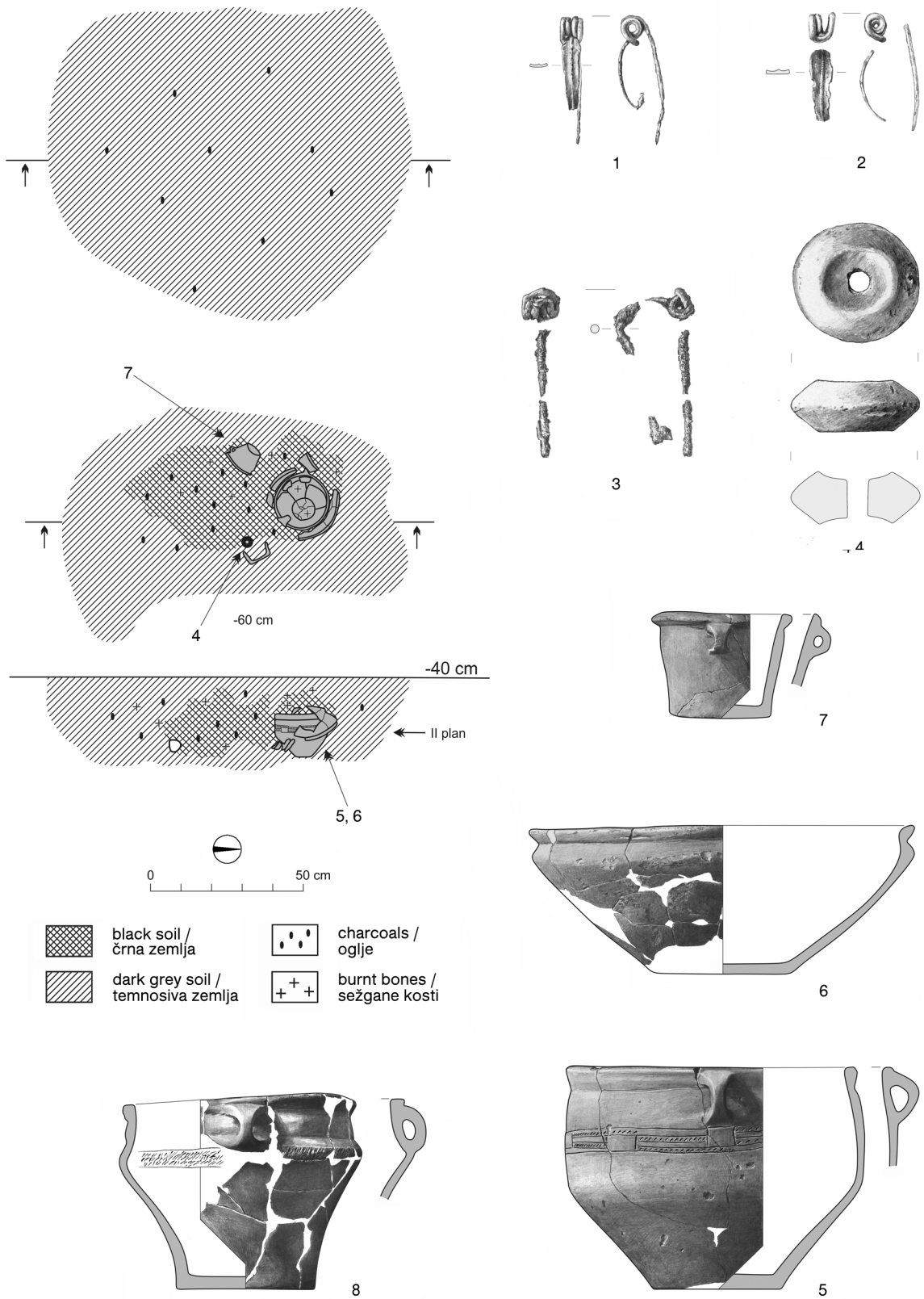


Fig. 3: Kleszewo, Grave 1047. 1,2 brass; 3 iron; 4-8 clay. Scale 1-3 = 1:2; all the rest = 1:4.  
 Sl. 3: Kleszewo, grob 1047. 1,2 medenina; 3 železo; 4-8 glina. M. 1-3 = 1:2; ostalo = 1:4.

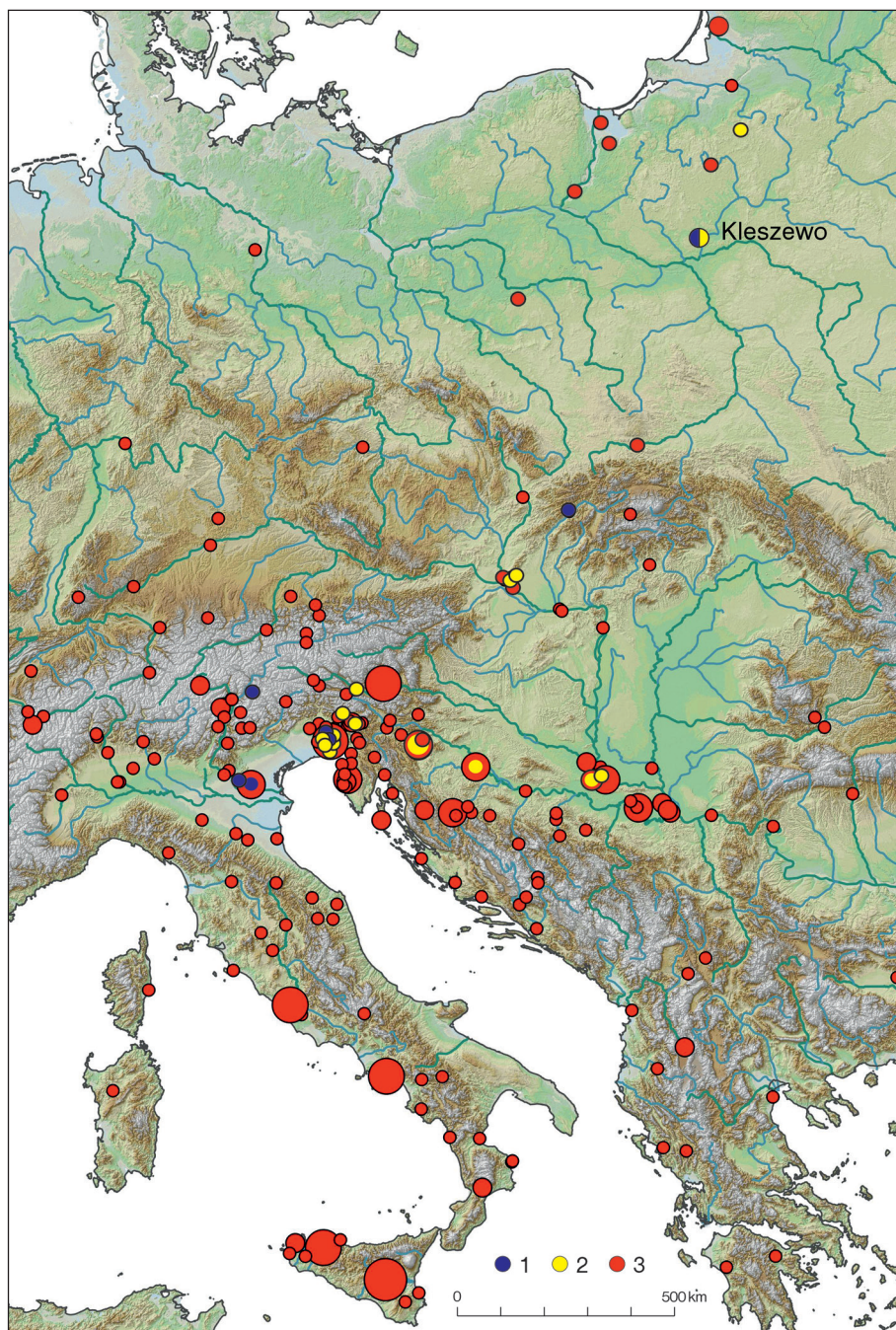


Fig. 4: Distribution of the Jezerine type fibulae. Type III (1); Type II with ribs on the lower side of the bow (2); unclassified (3).  
 Sl. 4: Razprostranjenost fibul vrste Jezerine. Fibule tipa III (1); tip II z rebri na spodnji strani loka (2); preostale fibule vrste Jezerine (3). (Adapted and supplemented after / Dopolnjeno in prirejeno po: Baitinger, Rasbach 2018)

Demetz (1999, 99–101) divided Jezerine fibulae into three types and several subtypes based on the morphology of the bow. His classification is an extension of the division proposed by Adam and Feugère (1982, 129–133). Type I comprises fibulae with smooth, rectangular bows, while Type II consists of fibulae with rectangular bows with ribs. Type III comprises fibulae with bows other than rectangular.

The specimens from Grave 1047 (Fig. 3: 1,2) from Kleszewo belong to this last type. Classification of fibula from Grave I/1961 (Fig. 2: 1) is more difficult, because the triangular shape of the bow is not so clear. Fibulae identified with Type III come from a few known sites only (Fig. 4), almost all of which are located in northern Italy. The majority of the exemplars are only partially

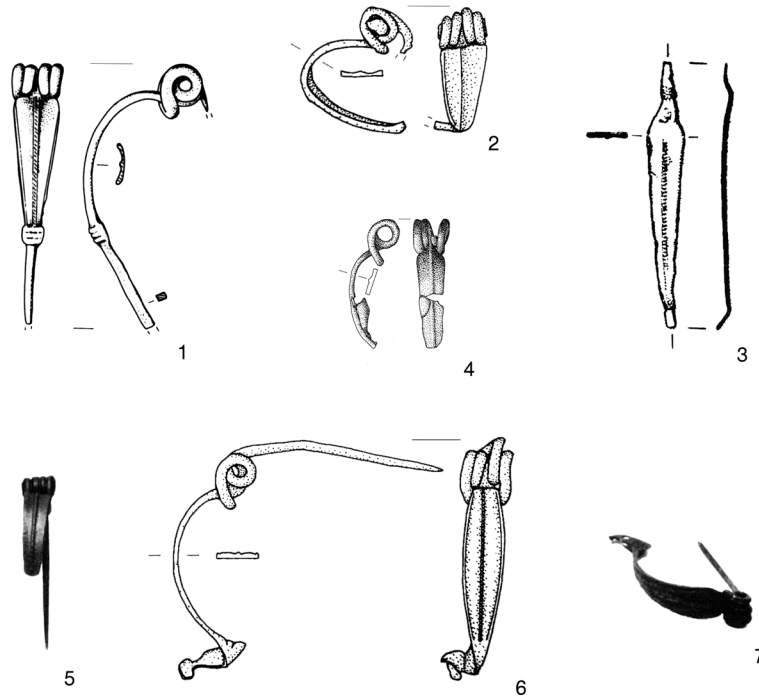


Fig. 5: Fibulae of the Jezerine III type. Scale = 1:2.

Sl. 5: Fibule tipa Jezerine III. M. = 1:2.

(After / Po: Beninger 1937 [5]; Fortunati Zuccála 1980 [7]; Leonardi, Mengotti, Panciera 1991 [3]; Meller 2002 [4]; Salzani 1990 [1]; Seidel, Lavarone 2008 [2,6])

1 – Pressana-Sant’ Agata (Verona, IT); 2 – Sevegliano (Udine, IT); 3 – Doss Zelor (Trento, IT); 4 – Este-Baratella (Padova, IT); 5 – Púchov (Púchov, SK); 6 – Strassoldo (Udine, IT); 7 – Gropello Cairoli, Grave / grob VIII (Pavia, IT)

preserved, which makes their classification more difficult. In the case in which the foot and the tin ring at the base of the bow are not present, it is very difficult to identify them unequivocally as either Jezerine III or Nauheim type. Examples of Jezerine III type fibulae with triangular bows are known from Pressana-Sant’ Agata (prov. di Verona, IT) (Fig. 5: 1; – Salzani 1990, 188, Fig. 1: 4; Salzani 2002) and Sevegliano (prov. di Udine, IT) (Fig. 5: 2; Seidel, Lavarone 2008, 102, Fig. 136). It is possible that the badly preserved specimens from Doss Zelor (prov. di Trento, IT) (Fig. 5: 3; – Leonardi, Mengotti, Panciera 1991, 201, Fig. 229: 20) and Este-Baratella (prov. di Padova, IT) (Fig. 5: 4; – Meller 2002, 58, Pl. 18: 219), also belong to this type, however, the authors of the publications presenting material from these sites identify them as Nauheim type. I know of only one fibula with a triangular bow found outside the area of northern Italy that could possibly represent type Jezerine III. It comes from a settlement of the Púchov Culture in Púchov (okres Púchov, SK) (Fig. 5: 5; – Beninger 1937, 87, Pl. 16: 147). Fibulae type Jezerine III with ellipsoidal bows come from northern Italy: Strassoldo (prov. di Udine, IT)

(Fig. 5: 6; – Seidel, Lavarone 2008, 102, Fig. 138), and, perhaps, Gropello Cairoli (prov. di Pavia, IT) Grave VIII (Fig. 5: 7; – Fortunati Zuccála 1980, 22–23, Fig. 11: 5b; Demetz 1999, 251).<sup>4</sup>

The fibulae from Grave I/1961 (Fig. 2: 1) are small in number (ca. 20 examples), and part of peculiar group of Jezerine-type fibulae consisting of specimens with a rib or ribs placed on the lower side of the bow (Fig. 6). Such items are met mainly in north-eastern Italy and southern Pannonia (Fig. 4; 6: 1–14). Apart from the fibula from Kleszewo, I know of only three specimens from outside the abovementioned regions. Two were found in the vicinity of the oppidum in Bratislava (Fig. 6: 15,16), and one more in Krukłanki (pow. Giżycko) (Fig. 8: 1) in north-eastern Poland.

Jezerine fibulae (Types I and II) production began around half of 1<sup>st</sup> century BC and been continued (in case of Type I, perhaps) in the Augustan Period. The chronology of fibulae belonging to Type III is not clear; it probably did not extend

<sup>4</sup> This fibula is sometimes identified as type Nauheim with the foot in the type of Jezerine/Gorica fibulae (Božič 2008, 136).

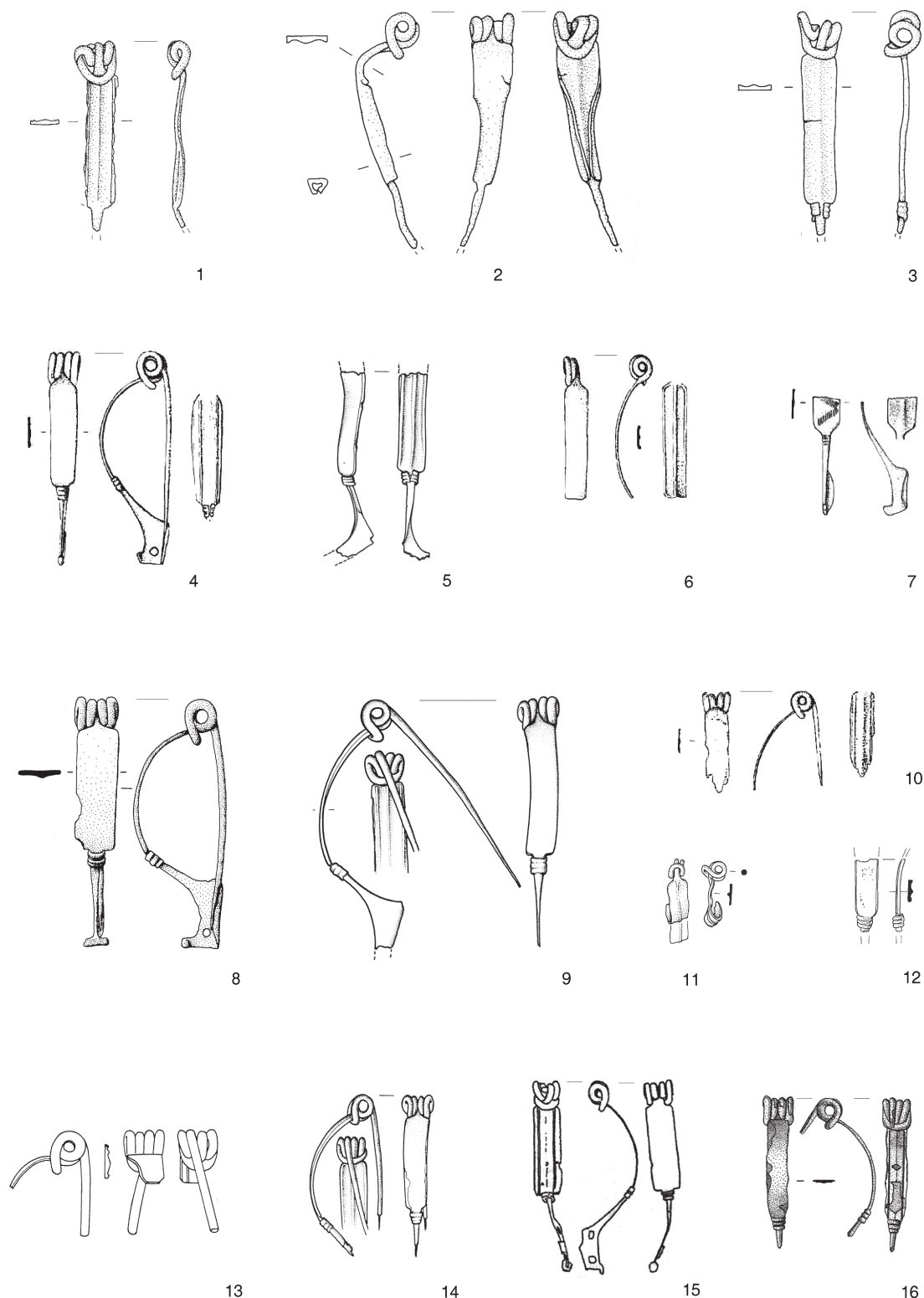


Fig. 6: Examples of fibulae Jezerine II with rib on lower side of bow. Scale = 1:2.

Sl. 6: Fibule tipa Jezerine II z rebrom na spodnji strani loka. M. = 1:2.

(After / Po: Adam, Feugère 1982 [8]; Božič 2011 [11,12]; Čambal 2017 [15,16]; Drnić 2013 [4,6,7,10]; Knez 1992 [5,9,13,14]; Seidel, Lavarone 2008 [1-3])

1 – Sevegliano (Udine, IT); 2 – Privano (Udine, IT); 3 – Tapogliano (Udine, IT); 4 – Vukovar (HR); 5, 9, 13, 14 – Novo Mesto (SLO); 6, 10 – Sisak (HR); 7 – Dalj (Osijek, HR); 8 – Idrija (SLO); 11, 12 – Tonovcov Grad (Kobarid, SLO); 15 – Bratislava-Staré Mesto (SK); 16 – Bratislava-Rača (SK)

beyond the beginning of the Common Era (Demetz 1999, 104–105). In the areas of central Europe and Balkans, Jezerine-type fibulae (all types) are usually dated to central European LT D2 phase (or concurrent phases), less frequently (mainly type II) to the beginning of the Roman Period (e.g., Pieta 1982, 34, 160, 162; Božič 2008, 144–147; Čambal, Budaj 2009, 206–207; Čambal 2017, 94).

In summary, the fibulae of the type Jezerine found in Kleszewo are probably products of the northern Italian workshops from the second half of the 1<sup>st</sup> century BC. This is indicated by the dissemination of parallel specimens and, probably, also of the alloy of which they were made. Based on the analysis of the artefacts from the territory of present-day Slovenia, it has been suggested that the technology of manufacturing brass objects had not been known to the prehistoric societies in Europe, including inhabitants of the east Alpine and west Balkan regions immediately before they were incorporated into the Roman Empire. Therefore, brass fibulae of the Jezerine type found outside the borders of the Empire are recently regarded as Roman imports from northern Italy (Istenič 2010, 142–146; Istenič 2012; Istenič, Šmit 2007; Istenič, Šmit 2014, 215–218; for the finds from modern Croatia and Slovenia see Drnić 2013, 54, 56). However, it must be emphasised here that fibulae made of copper alloys with low percentage content of zinc could have been produced from remelted Roman items also in non-Roman workshops (see Drnić 2013, 56).

#### JEZERINE FIBULAE NORTH OF THE CARPATHIANS

As mentioned above, over a dozen Jezerine-type fibulae were recorded in the regions to the north of the Carpathian Mountains, and in the south-eastern Baltic zone in particular. Some of them have already been mentioned in more or less detail (e.g., Nowakowski 2000, 212–213; Fig. 1a–d; Żórawska 2001; Juga-Szymańska 2011, 41). Unfortunately, most of them were discovered in either the 19<sup>th</sup> century or the first half of the 20<sup>th</sup> century, and were lost in the 1940s in the course of the war. Information about the latter specimens can be found in the pre-war literature or in surviving private archives of archaeologists who had had access to museum collections before they were scattered during the war, and who had documented the artefacts of interest for their own needs. Only

six specimens (including the fibulae from Kleszewo) were found during post-war excavations.<sup>5</sup>

The northernmost finds come from the vicinity of the estuary of the Neman River. A Type IIc Jezerine fibula was found in Šilutė (Šilutės apskritis, LT) (Fig. 7: 1; List no 4).<sup>6</sup> The precise location from which two other (Fig. 7: 2,3; List nos 5, 6) specimens type IIc from this region were recovered is unknown. Archival data indicate that, similar to the abovementioned exemplar, they also come from the vicinity of Šilutė (Banytė-Rowell 2015, 40–41).<sup>7</sup> Another fibula of the Jezerine type IIc was found in the area near present-day Novaâ Derevnâ, (Černâhovskij rajon, RU) (Fig. 7: 4; List no 7), on the central Pregolya River. The archaeological context of this artefact is unknown. Other material obtained at this site is clearly younger and comes from the Late Roman Period (Nowakowski 1996, 222; Jankuhn, *Archive*; cf. Hollack 1908, 37). Two<sup>8</sup> more Jezerine-type fibulae were found at the

<sup>5</sup> I would like to thank Sergej Jakimov and Svetlana Koval (Kaliningradskij oblastnoj istoriko-hudožestvennyj muzej in Kaliningrad, Russia); Heino Neumayer, Izabela Sztzer (Museum Vor- und Frühgeschichte in Berlin, Germany); Volker Hilberg (Museum für Archäologie Schloss Gottorf in Schleswig, Germany), Ülle Tamla (Tallinna Ülikooli Arheoloogiline Teaduskogu in Tallin, Estonia), Grzegorz Stasielowicz (Muzem Archeologiczno-Historyczne in Elbląg, Poland) and Anna Juga-Szymańska, Warsaw, Poland for sharing and allowing to publish the archival materials and artefacts.

<sup>6</sup> The entire (modern and former) administrative data, references to literature and/or museum collections are in the List below main text.

<sup>7</sup> These are the same fibulae as the ones placed by some researchers in the vicinity of Sovets'k (Kaliningradskaa oblast', RU; former Tilsit, Ldkr. Tilsit-Ragnit, Ostpreussen).

<sup>8</sup> The identification of another specimen from Masuria, i.e., the fibula from Grzybowo (pow. Giżycko; former Grzybowen, Kr. Lötzen), Grave 22, as the Jezerine type (e.g., Rieckhoff 1975, 97) is not very probable. This fibula is known from several brief mentions from the first quarter of the 20th century. Based on its construction (ribbony bow, narrow foot), German archaeologists connected it with the group of fibulae from the territory of former East Prussia province (i.e., the abovementioned fibulae from Šilutė and Kruklanki), which are now known as the Jezerine type (Bezenberger 1909, 472; Ebert 1926, 81), or, alternatively, they considered it an analogue of a fibula (type Almgren 2a) from Grave 19 in Grzybowo (Peiser 1919, 317; cf. Żabiński et al. 2016, 132, Fig. 17). According to Ebert (1926, 81), the presumed Jezerine-type fibula from Grave 22 was found together with a rectangular fire-flint and two rivets, which differs from the description of contents of this grave in the publication of material from the cemetery in Grzybowo by Peiser (1919, 317). According



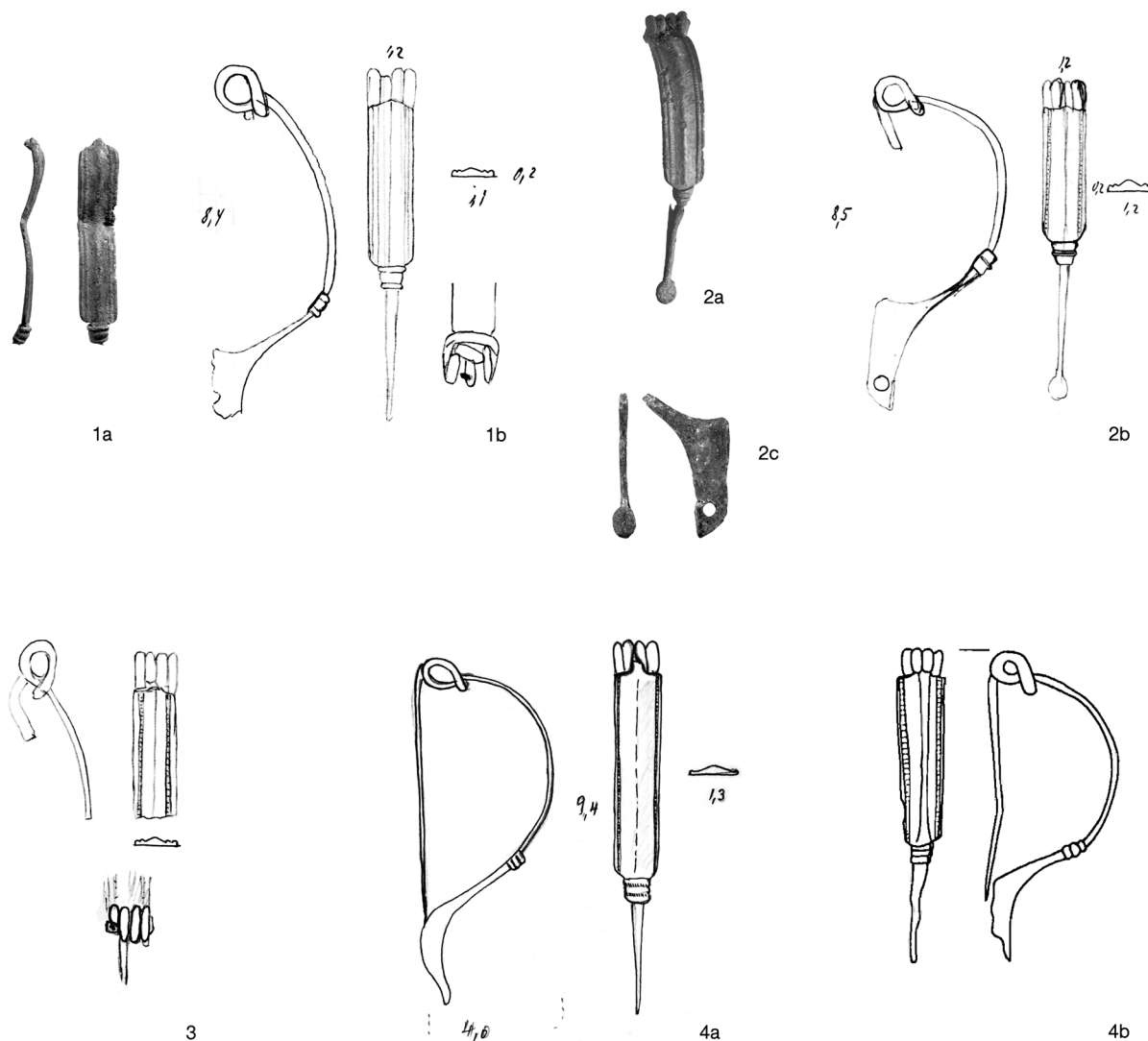


Fig. 7: Fibulae of the Jezerine type from the territories of modern Lithuania and Russia. Scale 1a,2c,4b = 1:2 (for 1b,2a,2b,3,4a the original illustrations are reduced by half).

Sl. 7: Fibule tipa Jezerine z območja današnje Litve in Rusije. M. 1a,2c,4b = 1:2 (za 1b,2a,2b,3,4a so originalne risbe, pomanjšane na polovico). (After / Po: Grenz, *Archive* [2a]; Jankuhn, *Archive* [1b,2b,3,4a]; Nowakowski 1996 [4b]).

1 – Šilutė (List: 4); 2 – vicinity of Šilutė (List: 5); 3 – vicinity of Šilutė (List: 6); 4 – Novâ Derevnâ (List: 7)

cemeteries of the Western Balts cemeteries in the Masuria in north-eastern Poland. The first speci-

to the latter, these contents correspond to Grave 19 from the same site, from which the aforementioned fibula type Almgren 2a was recovered (recently Źabiński et al. 2016, 132, Fig. 17). The state of the preservation of the fibula as described by Ebert (damaged spring and foot parts) also corresponds to the description of the exemplar from Grave 19. Therefore, it seems that both Bezenberger and Ebert when recounting a fibula resembling type Jezerine were in fact writing about the fibula type Almgren 2a from Grave 19 after Peiser. The difference in feature numbering is not possible to explain at the moment. I offer my thanks to Anna Juga-Szymańska for drawing my attention to this issue.

men is a fibula type IIA with a rib on the lower side of the bow<sup>9</sup> from Grave LVII in Krukłanki (pow. Giżycko, PL) (Fig. 8: 1; List no 8). This fibula is dated to the Phases A3–B1, with the beginning of the Roman Period being more likely (Nowakowski 2001, 65; Iwanicki, Juga-Szymańska 2007, 56). The other specimen was uncovered in Nowy Zyzdrój (pow. Mrągowo, PL), Grave 2 (Fig. 8: 2; List no 9).

<sup>9</sup> The fibula has been previously classified as type Ic, i.e., a specimen with a smooth, unadorned bow (e.g., Demetz 1999, 248). The presence of a rib is clearly indicated in the drawing of the cross-section of the bow made by Herbert Jankuhn.

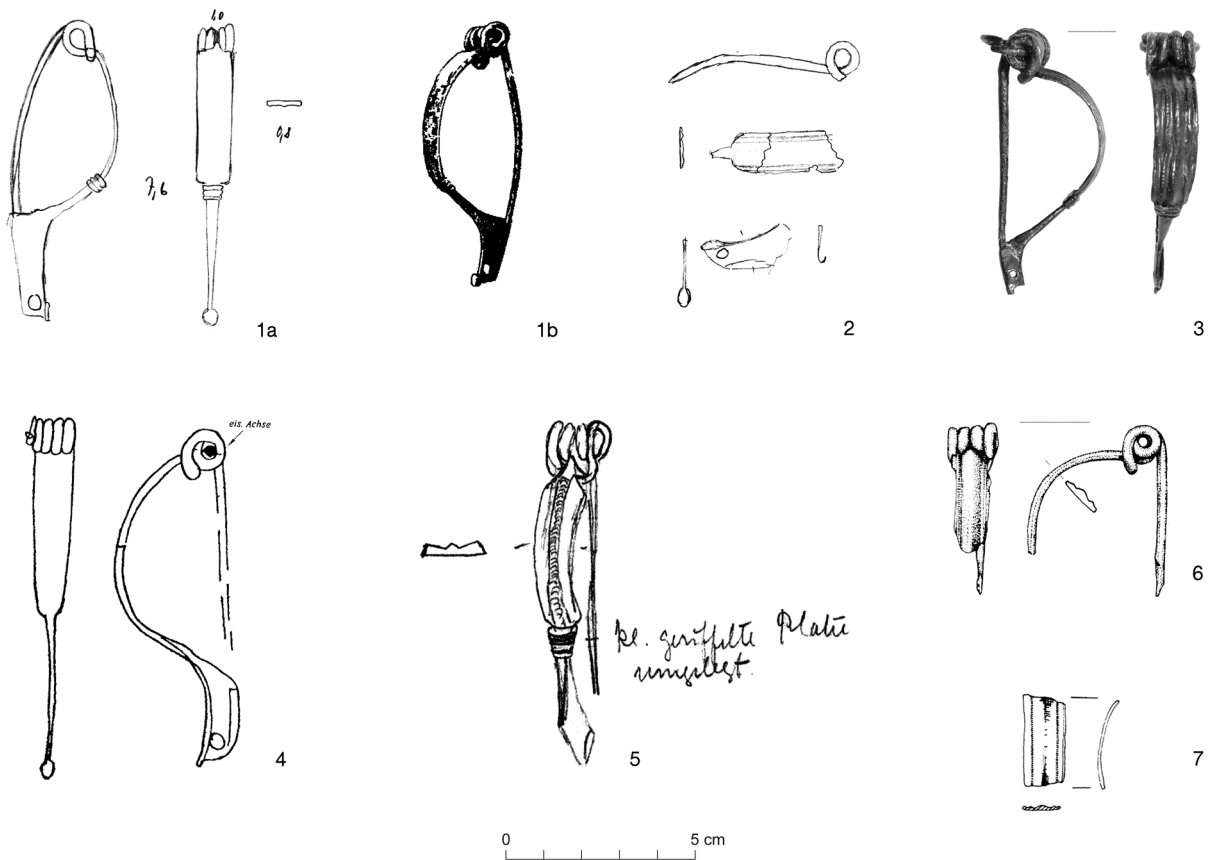


Fig. 8: Fibulae of the Jezerine type from the territories of modern Poland. Scale 1b,3,4,6,7 = 1:2 (for 1a,2,5 the original illustrations are reduced by half).

Sl. 8: Fibule vrste Jezerine z današnje Poljske. M. 1b,3,4,6,7 = 1:2 (za 1a,2,5 so originalne risbe, pomanjšane na polovico). (After / po: Grygiel, Grygiel, Stasiak [6]; Jankuhn, Archive [1a]; Poleska 2006 [7]; Schmiedehelm, Archive [2,5]; v. Stadie 1919 [1b]; Źórawska 2001 [4])

1 – Krukłanki (List: 8); 2 – Nowy Żyzdrój (List: 9); 3 – Lubieszewo (List: 10); 4 – Stary Targ (List: 11); 5 – Kałdus (List: 12); 6 – Gola (List: 13); 7 – Kraków-Pleszów (List: 13)

It corresponds to Type IIc. The scarce contents of the grave make it impossible to precisely date this artefact.

Three Jezerine-type fibulae were recorded at the sites associated with the Oksywie and Wielbark Cultures situated along the lower course of the Vistula River.<sup>10</sup> A type IIc fibula found in Grave 34a in Lubieszewo (pow. Nowy Dwór Gdański, PL) (Fig. 8: 3; List no 10), can reasonably be attributed

<sup>10</sup> In the Late Pre-Roman Period, these areas were inhabited by the population of the Oksywie Culture, and during the Roman Period by the population of the Wielbark Culture. Apart from the Jezerine-type fibulae mentioned below, the fibulae from Graves 215 and 568 from the cemetery in Grudziądz-Rządź (pow. Grudziądz, PL; formerly Ronsden, Kreis Graudenz), were incorrectly included in the same category (e.g., Dąbrowska 1988, 207; Poleska 2006, 151). These fibulae represent other forms (see Anger 1890, 45, Pl. 13: 17,18).

to the Oksywie Culture. It was accompanied by a type N iron fibula by Kostrzewski and a bronze bracelet with ball-shaped terminals (Jonakowski 1996). These objects allow for dating the assemblage to the Phase A3 of the Late Pre-Roman Period. A fibula with a smooth external surface of the bow from Grave 245 in Stary Targ (pow. Sztum, PL) (Fig. 8: 4; List no 11), is much harder to interpret. It was found in a feature containing material with varying chronology, such as fibulae type Almgren 68 and 162, and Wielbark Culture pottery from the Late Roman Period. It is stipulated that the Jezerine-type fibula might have come from the same feature as the fibula type Almgren 68, which had been destroyed by a burial from the Late Roman Period (Źórawska 2001, 65–66; Źórawska 2005, 123). This would date it to the late stage of the Phase B1. If this interpretation is correct, it would make this specimen one of the latest dating

examples of this form discovered in the territory of barbarian Europe.<sup>11</sup> However, the connection between these two fibulae may be erroneous; it is possible that they are the so-called stray finds recovered from the secondary deposit in the fill of the burial pit from the Late Roman Period. Several instances such as this one, in which artefacts from features with clearly different chronologies were apparently found within one assemblage, are known from this site (Żórawska 2005, 112).<sup>12</sup> The third Jezerine-type fibula from the lower Vistula region is a stray find from the cemetery of the Oksywie and Wielbark Cultures located at the foot of Saint Lawrence Mountain (Góra Świętego Wawrzyńca) in Kałdus (pow. Chełmno, PL) (Fig. 8: 5; List no 12). This fibula was published more than a hundred years ago; however, the brief description and lack of illustrations were the reasons that this artefact had not been previously associated with the group of fibulae discussed herein. A sketch of this fibula drawn in the 1920s by an Estonian archaeologist, M. Schmiedehelm, allows us to unequivocally classify this object as Jezerine IIa type. Unfortunately, neither the chronology nor cultural association of this artefact can be established.

Four fibulae were recorded in the area of the Przeworsk Culture. Three, presented in this paper, were found in Kleszewo. The fourth (a fibula of Type IIc) was recorded in a cemetery at Gola (pow. Jarocin, PL) (Fig. 8: 6; List no 13) in western Poland. It was found in well-furnished Grave 3 with numerous items including 12 clay vessels, an iron buckle with a long, eight-shaped frame and a rectangular ferrule, a razor, a knife, and an ornamented spearhead (Grygiel, Grygiel, Stasiak 2019, 150–158, Fig. 106–107). The object could be dated to the beginning of the Early Roman Period.

The last specimen known to me from the territory north of the Carpathian Mountains was found in a cultural layer at the settlement site in Kraków-Pleszów, site 17 (pow. Kraków, PL) (Fig. 8: 7; List no 14), inhabited by a multi-ethnic population (Celtic and Przeworsk) defined as the Tyniec Group. This artefact was preserved in a very poor condition. If the interpretation of the artefact is

correct, then the characteristic profile of the bow fragment allows for associating it with group IIc.

In summary, I know of 14 examples of Jezerine-type fibulae found in the areas to the north of the Carpathian Mountains. The majority of them were recorded in the area of the south-eastern Baltic region, between the lower course of the Vistula and the estuary of the Neman. Only 6 or 7 specimens (if we count the fibula from Stary Targ) were found in the features that could be more precisely dated based on their other contents. Four of these fibulae (Kleszewo with 3 specimens; Lubieszewo) were found in assemblages dated to the late stage of the Late Pre-Roman Period (Phase A3). The other three (Gola, Krukłanki, Stary Targ) are most often associated with the beginning of the Roman Period.

\* \* \*

The Jezerine fibulae found beyond the borders of the Empire are usually seen as an indication of relations between *Imperium Romanum* and the populations of barbarian Europe, usually but not exclusively, of an economic character (e.g., Pieta 1982, 185; Rustoiu, Gheorghiu 2010, 449; Dizdar, Tonc 2013, 66; Drnić 2013, 46–48). Some researchers suggest that the presence of these artefacts could be linked to the activities of the Roman army (e.g., Teichner, Schierl 2009, 308; Martin-Killcher 2015, 263–264).<sup>13</sup> This thesis is usually raised in context of the finds from the Danube region and the western Balkans and southern Pannonia (e.g., Adam, Feugère 1982, 151; Petkovič 2010, 36; Istenič 2015, 48–49), where at last decades of the 1<sup>st</sup> century BC and beginning of 1<sup>st</sup> century AD numerous Roman military campaigns took place (see Šašel Kos 2018, 41–44). Other possible reasons, for example, raids (e.g., Rustoiu, Gheorghiu 2010, 449), are mentioned less often. In the case of the territories north of the Carpathian Mountains, Jezerine-type fibulae are usually interpreted as

<sup>11</sup> The late stage of the Phase B1 (B1b or B1b–c) in northern Poland is dated approx. to the years 30–70 CE (recently Schuster 2010, 222–223).

<sup>12</sup> Errors and omissions might have been caused by the very fast pace of the excavation. Over 430 graves were explored in the course of 17 days (August and September of 1937).

<sup>13</sup> The Jezerine fibulae discovered in Sicily are interpreted in a similar way (Baitinger 2012, 385; Baitinger, Rasbach 2018, 51–52). It is assumed that the presence of these fibulae could be related to the movements of the troops and population at the end of the civil war (during the rule of Sextus Pompey), or the settling of veterans by Augustus. On the other hand, the high number of fibulae found there, e.g., in ancient Morgantina (prov. di Enna, IT) – about 60 specimens, and Monte Iato (prov. di Palermo, IT) – 18 specimens, may also indicate a local production of these items (Baitinger, Rasbach 2018, 52).



Fig. 9: Simmering-type coin from Sieluń (pow. Maków Maz., PL). Scale = 2:1.

Sl. 9: Novec vrste Simmerling iz Sieluńa (okrožje Maków Maz., Poljska). M. = 2:1.

(After / Po: Andrzejowski 2015)

evidence of commercial relations focused around the amber trade (Okulicz-Kozaryn, Nowakowski 1996, 167–168; Nowakowski 2013, 128).

The dissemination of these fibulae between the Alpes and the Carpathians suggests that they came to the territory of modern Poland through the Celtic centres situated on the banks of the central Danube, and then through the lands of present-day Slovakia. The clear concentration of these artefacts (almost half of all the specimens found in Slovakia) registered in the vicinity of the oppidum in Bratislava and a similar number of exemplars scattered across the vast territory of the Púchov Culture (Fig. 4) may indicate far-reaching relations between the population of the Polish lands and the Danube region through the Moravian Gate. The area of present-day Bratislava owes its exceptional position to, among others, its ideal location (at the junction of the Morava and the Danube), which enabled the control over the main transport routes in this part of Europe. Its unique importance is exhibited in, for example, local mintage, large number of imports, repositories of Roman amphorae, and stone architecture, possibly a testament to the presence of Roman artisans (e.g., Kolníková 1991; Pieta 1996, 186–190; Kysela, Olmer 2014; Musilová, Minaroviech 2016). The participation of the inhabitants of this particular area in the organisation of contacts along the so-called Amber Route may be supported by a Simmering-type coin (Fig. 9) discovered in

Sieluń on the Narew River, approx. 30 km to the north-east of Kleszewo (Andrzejowski 2015). Coins of this type were minted at the oppidum in Bratislava from the 70s to the 40s BC, or perhaps even a bit later (Kolníková 1991, 84; ead. 1996, 349; Fröhlich 2010, 6–7). The coin from Sieluń is one of only two specimens of this type found to the north of the Carpathian Mountains.<sup>14</sup> The presence of such an ‘exotic’ numismat in the area of north-eastern Masovia, at the frontier of the Przeworsk Culture settlement at that time (see Dąbrowska 2008, 80–81, Map 2; Andrzejowski 2015, 19), and along one of the branches of the Amber Route (see below), does not seem accidental. Possibility of close contacts between people Danube Region and territory of modern Poland is confirmed by a presence of mirrors of the type Zadowice (Dulęba 2018), Italic/Roman fibulae of types of Gorica and Almgren 238a acc. Demetz’s classification (Poleska 2006, 152, Fig. 20: 21) and Idrija-type (Maciałowicz 2010, 376–380, Fig. 9: 1). Apart from the latter, there are not registered<sup>15</sup> in the area of the Púchov Culture (Fig. 10).

The presence of the Jezerine-type fibulae in the territories to the north of the Carpathian Mountains has long been associated with the activities along the Amber Route. Their peculiar spread allowed even for an attempt at reconstructing one of the terminal branches of this transport route leading through Masuria and to the estuary of the Neman River (Nowakowski 2009; Skvorzov 2012, 170, 172; Chilińska-Früboes 2015, 106). These fibulae, presumably just as the majority of imports from the end of the Pre-Roman Period, came from the South thanks to the people of the Tyniec Group or through the territories that they inhabited (Poleska 2006, 153, 258; Bochnak 2014, 192). Further to the north, the connections through the settlement clusters of the Przeworsk Culture in south-central Poland (intersection of the Prosna and the upper Warta Rivers) and in Kuyavia, or activities along the Vistula via eastern Masovia are indicated the most often here (Dąbrowska 1996; 2003; Bochnak 2014, 192–193, with literature). The results of studies and archaeological discoveries in the last

<sup>14</sup> The other specimen was found in the vicinity of villages Gaški and Wierzbiczany (pow. Inowrocław, PL) in Kuyavia – information obtained from M. Rudnicki.

<sup>15</sup> The fibula found in the territory of the Púchov Culture in Žehra (okres Spišská Nová Ves, SK) and indicated in the literature as type Gorica (Pieta, Soják 2004, 172, Fig. 1: 8; Soják 2010, 102), belong to the Jezerine type.

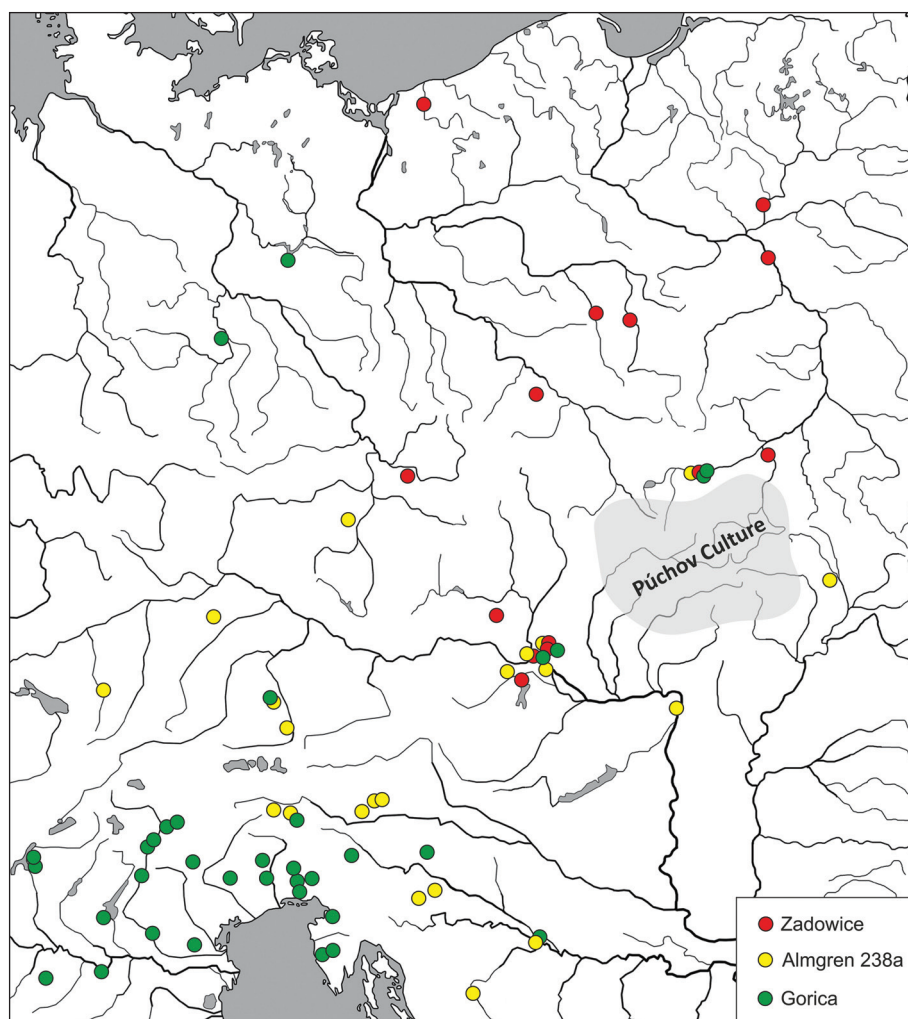


Fig. 10: Distribution of Gorica and Almgren 238a (acc. Demetz) types fibulae and Zadowice-type mirrors. Grey area: approximate territory of the Púchov Culture at the Late La Tène Period (after Pieta 2010).

Sl. 10: Razprostranjenost fibul vrste Gorica, Almgren 238a (po Demetzu) in ogledal vrste Zadowice. Sivo območje: približno območje razprostranjenosti kulture Púchov v poznolatenskem obdobju (po Pieta 2010).

(After / Po: Demetz 1999; Čambal 2017; Dulęba 2018, with modifications of author / z avtorjevimi prilagoditvami)

few years have highlighted the importance of the connections leading through central Poland.<sup>16</sup> This is not surprising in light of the unique role played by these areas during the slightly earlier (Bochnak 2014, 192; Maciałowicz 2015, 287) as well as later periods (Wielowiejski 1996). At the end of the Pre-Roman and the beginning of the Roman Periods, local types of coins based on the minting system of the Boii were minted in this area (the vicinity of Kalisz and Inowrocław), which testifies to the presence of Celtic (Boii) groups among the Germanic population of the Przeworsk Culture

(Rudnicki et al. 2009; Rudnicki 2012; Rudnicki, Dymowski 2015, 256–263). It is stipulated that these were small communities, which, together with the Germanic elite, headed the social ladder of the local settlement structures. They have also been credited as an important factor in the organisation of relations that may have been based on the amber trade. The far-reaching connections of these communities are evidenced not only in the so-called industrial imports but also in numismatic sources, for example, in addition to the local currency, coins minted in the Danube region including the second example of a Simmering-type coin in Poland were found in Kuyavia (Rudnicki, Dymowski 2015, 257 and personal information of Rudnicki). It is also possible that the influence

<sup>16</sup> E.g., see new finds of the fibulae of type Almgren 18 and Tierkopffibel Ia (Kurpiewski, Rakoczy 2015, 16, 25, Tabl. 1: 39.237; 39: 79.237; Ołędzki, Ziąbka 2017).

of Kuyavia can be linked to some of the imports recorded at the sites of the Przeworsk Culture in eastern Masovia. In the case of this region, it is still the relations with the Tynieć Group that are indicated the most frequently in the context of the contacts along the Vistula (Dąbrowska 1996; 2008, 116). This phenomenon is known as ‘the Vistula route’ or ‘the eastern branch of the Amber Road’ in Polish literature (lately Bochnak 2014, 192–193, see there for older sources). The period of the peak activity of the people of eastern Masovia associated with the far-reaching contacts mostly covered the end of the Late Pre-Roman Period (Phase A3). It is characterised primarily by the presence of relatively numerous fibulae type Almgren 18 and, to a lesser extent, also other forms of southern provenance. It was probably also through the Masovian settlements that the products from the late La Tène or

early Roman workshops found their way further north, into the amber-giving territories inhabited by the Baltic people (e.g. a fibula type Almgren 18a from Staświny (pow. Giżycko, PL) – Karczewski, Karczewska, Pluskowski 2015, 183, Tabl. IV: 1 – or the already mentioned Jezerine fibulae). The three new finds of Jezerine-type fibulae in Kleszewo, one of the eastern Masovian cemeteries of the Przeworsk Culture, fit into this picture perfectly. Their presence can perhaps be explained by the strategic location of the local settlement cluster near one of the main watercourses of Masovia: the Narew River. The river enabled easy transport between the vast areas of central-eastern and northern Poland and allowed the local population to profit from their participation in the interregional contacts.

*Translation: Kinga Brzezińska*

## LIST

The Jezerine fibulae from territories north of Carpathians

### 1. Kleszewo (Fig. 2: 1)

Pow. Pułtusk, PL;

Grave: I/1961.

Type: III?, with the rib on the lower side of bow.

Collection: Muzeum Regionalne in Pułtusk, PL; no inv. MRP/A/7.

Literature: unpublished.

### 2. Kleszewo (Fig. 3: 1)

Pow. Pułtusk, PL;

Grave: 1047.

Type: III.

Collection: Muzeum Starożytnego Hutnictwa Mazowieckiego in Pruszków, PL; no inv. MSHM/A/771.

Literature: unpublished.

### 3. Kleszewo (Fig. 3: 2)

Pow. Pułtusk, PL;

Grave: 1047.

Type: III.

Collection: Muzeum Starożytnego Hutnictwa Mazowieckiego in Pruszków, PL; no inv. MSHM/A/771.

Literature: unpublished.

### 4. Šilutė (Fig. 7: 1)

Šilutės apskritis, LT (former Heydekrug, Ldk. Heydekrug, Ostpreußen);

Type: IIc.

Collection: Kaliningradskij Oblastnoj Istoriko-Hudožestvennyj Muzej in Kaliningrad, RU; no inv. KOIHM 17019.137. Until 1945 Prussia-Museum in Königsberg, Ostpreußen; no inv. II.99.489.

Literature: Heydeck 1900, 55, note 1; Bezenberger 1909, 472–473; Ebert 1926, 81; Nowakowski 2005, 7, Fig. 1e; Jankuhn, *Archive*.

### 5. Šilutė (vicinity) (Fig. 7: 2)

Šilutės apskritis, LT (vicinity of former Heydekrug, Ldk. Heydekrug, Ostpreußen);

Type: IIc.

Collection: Museum Vor- und Frühgeschichte in Berlin, DE, Prussia-Sammlung; no inv. PrD 580. Until 1945 Prussia-Museum in Königsberg, Ostpreußen; no inv. II.83.7219a.

Literature: Heydeck 1900, 55, note 1; Bezenberger 1909, 472–473; Ebert 1926, 81; Nowakowski 2000, 213, Fig. 1c; Grenz, *Archive*; Jankuhn, *Archive*.

### 6. Šilutė (vicinity) (Fig. 7: 3)

Šilutės apskritis, LT (vicinity of former Heydekrug, Ldk. Heydekrug, Ostpreußen);

Type: IIc.

Collection: unknown, until 1945 Prussia Museum in Königsberg, Ostpreußen; no inv. II.83.7219a.

Literature: Heydeck 1900, 55, note 1; Bezenberger 1909, 472–473; Ebert 1926, 81; Nowakowski 2000, 213, Fig. 1d; id. 2005, 7, Fig. 1f; Jankuhn, *Archive*.

### 7. Novaâ Derevnâ (Fig. 7: 4)

Černâhovskij rajon, RU (former Gaitzuhnen, Kr. Insterburg, Ostpreußen);

Type: IIc.

Collection: Museum Vor- und Frühgeschichte in Berlin, DE; no inv. II.2023.

Literature: von Ledebur 1838, 3–4; Nowakowski 1995, 60, Pl. 15: 2; Nowakowski 2005, 7, Fig. 1d; Jankuhn, *Archive*.

**8. Kruklanki** (Fig. 8: 1)

Pow. Giżycko, PL (former Kruglanken, Kr. Angeburg, Ostpreußen);

Grave: LVII.

Type: IIa, with the rib on the lower side of bow.

Collection: unknown; until 1945 roku Prussia-Museum in Königsberg, Ostpreußen; no inv. V.498.9073.

Literature: Bezzenberger 1909, 472–473; von Stadie 1919, 406, Fig. 181; Nowakowski 2013, 36, Pl. 27: 3; Jankuhn, *Archive*.

**9. Nowy Zydrój** (Fig. 8: 2)

Pow. Mrągowo, PL (former Neu Sysdroy, Kr. Sensburg, Ostpreußen);

Grave: 2.

Type: IIc.

Collection: unknown; until 1945 roku Prussia-Museum in Königsberg, Ostpreußen. Literature: Juga-Szymańska 2011, 37, Fig. 3; Schmiedehelm, *Archive* 7,2.

**10. Lubieszewo** (Fig. 8: 3)

pow. Nowy Dwór Gdański, PL;

Grave: 34a.

Type: II.

Collection: Muzeum Historyczono-Archeologiczne in Elbląg, PL.

Literature: unpublished; cf. Żórawska 2001, 65; Jonakowski 1996, 172.

**11. Stary Targ** (Fig. 8: 4)

pow. Sztum, PL (former Altmark, Kr. Stuhm, Westpreußen);

Grave: 245.

Type: Ic or II, with rib/ribs on lower side of the bow.

Collection: unknown; until 1945 Heimatmuseum Marienwerder in Marienwerder, Westpreußen.

Literature: Żórawska 2001; Żórawska 2005, 123, Pl. 29/245.

**12. Kałdus** (Góra św. Wawrzyńca) (Fig. 8: 5)

Pow. Chełmno, PL (former Kaldus – Lorenzberg, Kr. Kulm, Westpreußen);

Type: IIa.

Collection: unknown; until 1945 Westpreußisches Provinzial-Museum in Danzig; no inv. V.S. 6892a (acc. Schmiedehelm nor inv. 6862).

Literature: XX. *Amtlicher Bericht über die Verwaltung der naturhistorischen, archäologischen und ethnologischen Sammlungen des Westpreussischen Provinzial-Museum für das Jahr 1899*, Danzig, 1900, 43; Blume 1915, 133; Kostrzewski 1919, 79. Schmiedehelm, *Archive* 7.25.44.12.

**13. Gola** (Fig. 8: 6)

Pow. Jarocin, PL;

Grave: 3.

Type: IIc.

Collection: Muzeum Archeologiczne i Etnograficzne in Łódź, PL.

Literature: Grygiel, Grygiel, Stasiak 2019, 151, Fig. 107: 13.

**14. Kraków-Pleszów** (Fig. 8: 7)

Pow. Kraków, PL;

Type: IIc.

Collection: Muzeum Archeologiczne in Kraków, PL

Literature: Poleska 2006, 151, Fig. 20: 19.

ADAM, A. M., M. FEUGÈRE 1982, Un aspect del l'arc alpin oriental et en Dalmatie au I<sup>er</sup> s.av. J.-C.: les fibules du type dit "de Jezerine". – *Aquileia Nostra* 53, 129–188.

ANDRZEJOWSKI, J. 2015, Celtycka moneta z Sielunia nad Narwią. – In: B. Kontny (ed.), *Ubi tribus faucibus fluente Vistulae fluminis ebibuntur. Jerzy Okulicz-Kozaryn in memoriam*, Światowit Supplement Series B: Barbaricum 11, 13–24.

ANGER, S. 1890, *Gräberfeld zu Rondsén im Kreise Graudenz*. – *Abhandlungen zur Landeskunde der Provinz Westpreussen* 1.

BAITINGER, H. 2012, Fibeln vom Mittelaltèreschema auf Sizilien und Kalabrien. – *Jahrbuch des Römisch-Germanischen Zentralmuseum Mainz* 59, 365–389.

BAITINGER, H., G. RASBACH 2018, Lockruf des Geldes – "Keltische" Söldner auf Sizilien?. – *Antike Welt* 3, 47–53.

BANYTÉ-ROWELL, R. 2015, Seeking the beginning of the Early Roman Iron Age in the Memelkultur area: steps in the dark. – In: B. Kontny (ed.), *Ubi tribus faucibus fluente Vistulae fluminis ebibuntur. Jerzy Okulicz-Kozaryn in memoriam*, Światowit Supplement Series B: Barbaricum 11, 37–50, Warszawa.

BENINGER, E. 1937, *Der germanischen Bodenfunde in der Slowakei*. – Anstalt für sudetendeutsche Heimatforschung, Vorgeschiede Abteilung 8.

BEZZENBERGER, A. 1909, Die Zeitstellung der Zangenfibeln und anderen Fibeln. – *Sitzungsberichte der Altertumsgesellschaft Prussia* 22 (1900–1904), 470–480.

BLUME, E. 1915, *Die germanische Stämme und die Kulturen zwischen Oder und Passarge zur römischen Kaiserzeit*. Teil 2: Katalog. – Mannus-Bibliothek 14.

BOCHNAK, T. 2014, *Importy celtyckie w kulturze przeworskiej i oksywskiej na ziemiach polskich w młodszym okresie przedrzymskim. Zróznicowanie – drogi napływu – kontekst kulturowy*. – Rzeszów.

BOŽIČ, D. 2008, *Late La Tène-Roman cemetery in Novo mesto. Ljubljanska cesta and Okrajno glavarstvo. Studies on fibulae and on the relative chronology of the Late La Tène period / Poznolatensko-rimsko grobišče v Novem mestu. Ljubljanska cesta in Okrajno glavarstvo. Študije o fibulah in o relativni kronologiji pozne latenske dobe*. – Katalogi in monografije 39.

BOŽIČ, D. 2011, Prazgodovinske najdbe s Tonovcovega gradu in železnodobna kulturna mesta v Posočju / Prehistoric finds from Tonovcov grad and Iron Age cult places in the Posočje area. – In: Z. Modrijan, T. Milavec, *Poznoantična utrjena naselbina Tonovcov grad pri Kobaridu / Late Antique fortified settlement Tonovcov grad near Kobarid*, Opera Instituti Archaeologici Sloveniae 24, 239–377.

- CHILIŃSKA-FRÜBOES, A. 2015, Rzymska fibula z d. Kirpehnen. – In: B. Kontny (ed.), *Ubi tribus faucibus fluente Vistulae fluminis ebibuntur. Jerzy Okulicz-Kozaryn in memoriam*, Światowit Supplement Series B: Barbaricum 11, 99–113.
- ČAMBAL, R. 2017, Spony z neskorej doby laténskej z územia juhozápadného Slovenska s dôrazom na zázemie bratislavského oppida. – In: E. Droberjar, B. Komoróczy (eds.), *Římské a germánské spony ve střední Evropě (Archeologie barbarů 2012)*, Spisy Archeologického ústavu AV ČR 53, 87–106.
- ČAMBAL, R., M. BUDAJ 2009, Keltské tetradrachmy z Pezinka a Bratislavy – Rače. – *Zborník Slovenského Národného Múzea* 103, *Archeológia* 19, 197–214.
- ČAMBAL et al. 2015 = R. Čambal, I. Bazovský, M. Budaj, B. Kovár 2015, Boische Besiedlung im Oppidum von Bratislava und seinem Hinterland. – In: M. Karwowski, V. Salač, S. Sievers (eds.), *Boier zwischen Realität und Fiktion. Akten des internationalen Kolloquiums in Český Krumlov vom 14.–16.11.2013*, Kolloquien zur Vor- und Frühgeschichte 21, 226–242.
- DĄBROWSKA, T. 1988, *Wczesne fazy kultury przeworskiej: chronologia – zasięg – powiązania*. – Warszawa.
- DĄBROWSKA, T. 1996, Frühe Stufen der Przeworsk-Kultur. Bemerkungen zu den Kontakten mit Südeuropa. – In: Z. Woźniak (ed.), *Kontakte längs der Bersteinstraße (zwischen Caput Adriae und der Ostseegebieten) in der Zeit um Christi Geburt. Materialien des Symposiums – Kraków 26.–29. April 1995*, 128–142, Kraków.
- DĄBROWSKA, T. 2003, Jeszcze raz o najwcześniejszych wpływach rzymskich na ziemiach polskich. – In: A. Bursche, R. Ciołek (eds.), *Antyk i barbarzyńcy. Księga dedykowana Profesorowi Jerzemu Kolendo w siedemdziesiątą rocznicę urodzin*, 153–160, Warszawa.
- DĄBROWSKA, T. 2008, *Młodszy okres przedrzymski na Mazowszu i zachodnim Podlasiu*. – Materiały Starożytne i Wczesnośredniowieczne 7.
- DEMETS, S. 1999, *Fibeln der spätlatène- und frühen römischen Kaiserzeit in den Alpenländer*. – Frühgeschichtliche und Provinzialrömische Archäologie 4.
- DIZDAR, M., A. TONC 2013, Finds of fibulae from 1<sup>st</sup> century BC in Croatia: Trade and exchange between Eastern Alps, the Danube and the northern Adriatic area before and during Roman conquest. – In: G. Grabherr, B. Kainrath, T. Schierl (eds.), *Brooches and other elements of dress as a source for reconstructing interregional movement and group boundaries from the Punic Wars to the decline of the Western Roman Empire. Proceedings of the International Conference from 27<sup>th</sup>–29<sup>th</sup> April 2011 in Innsbruck*, IKARUS. Innsbrucker Klassisch-Archäologische Universitätsschriften 8, 50–75.
- DRNIĆ, I. 2013, Fibule tipa Jezerine s prostora jugoistočne Panonije / Fibulae of the Jezerine-type from south-western Pannonia. – *Prilozi Instituta za arheologiju u Zagrebu* 30, 45–68.
- DRNIĆ, I., A. TONC 2014, Krasnolatenske i ranocarske fibule s japodskog prostora / Late La Tène and Early Imperial Fibulae from the Iapodian Territory. – *Prilozi Instituta za arheologiju u Zagrebu* 31, 181–214.
- DULĘBA, P. 2018, A mirror handle found in Kurzątkowice (pow. Oława/PL) – a contribution to the study of interregional contacts in Lower Silesia in the 1<sup>st</sup> century BC. – *Archäologisches Korrespondenzblatt* 48/1, 71–82.
- EBERT, M. 1926, *Truso. Vortrag, gehalten anlässlich der 2. Jahresversammlung der Königsberger Gelehrten Gesellschaft am 10. Januar 1926*. – Schriften der Königsberger Gelehrten Gesellschaft 3/1.
- ERICE LACABE, R. 1995, *Las fibulas del nordeste de la Península Ibérica: siglos I a.e. al IV d.e.* – Zaragoza.
- FORTUNATI ZUCCÀLA, M. 1980, Gropello Cairoli (Pavia) – La necropoli romana. – *Notizie degli scavi di antichità* 33 (1979), 5–88.
- FRÖHLICH, J. 2010, Unikálny keltský statér s nápisom DEVI[L]. K spoločensko-hospodárskej organizácii stredodunajských Kelto. – *Numismatický zborník* 25, 3–22.
- GLOGOVIĆ, D., M. MENĐUŠIĆ 2007, Osvrt na fibule tipa Jezerine u Hrvatskoj povodom novih nalaza iz Dragišića / A Look at the Jezerine-type Fibulae in Croatia in View of New Finds from Dragišić. – *Prilozi Instituta za arheologiju u Zagrebu* 24, 145–152.
- GOSTENČNIK, K. 2003, Fibelproduktion in augusteischer Zeit in Kärnten (Ö). – *Instrumentum* 17, 1, 16.
- GRYGIEL, M., R. GRYGIEL, W. STASIAK 2019, *Gola pod Jaraczewem w pradziejach*. – Łódź.
- HEYDECK, J. 1900, Ein Gräberfeld aus der la Tène-Periode bei Taubendorf, Kreis Neidenburg. – *Sitzungsberichte der Altertumsgesellschaft Prussia* 21 (1896–1900), 52–57.
- HOLLACK, E. 1908, *Erläuterungen zur vorgeschichtlichen Übersichtskarte von Ostpreußen*. – Glogau, Berlin.
- ISTENIĆ, J. 2010, Late La Tène scabbards with non-ferrous openwork plates / Poznatolatske nožnice s predrtim okrasnim okovom iz bakrove zlitine ali srebra. – *Arheološki vestnik* 61, 121–164.
- ISTENIĆ, J. 2015, Traces of Octavian's military activities at Gradišče in Cerkno and Vrh gradu near Pečine / Sledovi Oktavijanovega vojaškega delovanja na Gradišču v Cerknem in Vrh gradu pri Pečinah. – In: J. Istenić, B. Laharnar, J. Horvat (eds.), *Evidence of the Roman army in Slovenia / Sledovi rimske vojske na Slovenskem*, Katalogi in monografije 41, 43–49.
- ISTENIĆ, J., Ž. ŠMIT 2007, The beginning of the use of brass in Europe with particular reference to the south-eastern Alpine region. – In: S. La Niece, D. R. Hook, P. T. Craddock (eds.), *Metals and mines. Studies in archeometallurgy. Selected papers from conference Metallurgy: A Touchstone for Cross-cultural Interactions held at the British Museum 28–30 April 2005 to celebrate the career of Paul Craddock during his 40 years at British Museum*, 140–147, London.
- ISTENIĆ, J., Ž. ŠMIT 2014, Celts and Romans: a contribution to research into cultural interactions. – In: E. Peternick, M. Bartelheim (eds.), *Under the Volcano. Proceedings of the International Symposium on the Metallurgy of the European Iron Age (SMEIA) held in Mannheim, Germany, 20–22 April 2010*, Forschungen zur Archäometrie und Altertumswissenschaft 5, 205–220.
- IWANICKI, P., A. JUGA-SZYMAŃSKA 2007, Horyzont 1. kultury bogaczewskiej w świetle analizy wybranych typów zabytków. – In: A. Bitner-Wróblewska (ed.), *Kultura bogaczewska w 20 lat później. Materiały z konferencji, Warszawa, 26–27 marca 2003*, Seminarium bałtyjskie 1, 41–73.



- JONAKOWSKI, M. 1996, Lubieszewo, st. 2, gm. Nowy Dwór Gdański, woj. elbląskie, AZP 15–47/14. – *Informator Archeologiczny. Badania* 30/1996, 171–173, Warszawa.
- JUGA-SZYMAŃSKA, A. 2011, Die Fibel aus Lattenwalde. Die Fibeln A. 67–68 aus dem westbaltischen Kulturkreis. – *Archeologia Litwana* 12, 36–47.
- KARCZEWSKI, M., M. KARCZEWSKA, A. PLUSKOWSKI 2015, Grodzisko Święta Góra w Staświnach w Krainie Wielkich Jezior Mazurskich. Dzieje zasiedlenia przed i po podboju krzyżackim. – In: S. Wadył, M. Karczewski, M. Hoffmann (eds.), *Materiały do Archeologii Warmii i Mazur* 1, 175–193.
- KNEZ, T. 1992, *Novo mesto 2. Keltsko-rimsko grobišče Beletov vrt / Keltisch-römisches Gräberfeld Beletov vrt.* – Carniola Archaeologica 2.
- KOLNIKOVÁ, E. 1991, *Bratislavské keltské mince.* – Bratislava.
- KOLNIKOVÁ, E. 1996, (rec.) R. Göbl, Die Hexadrachmenprägung der Gross-Boier; Wien 1994. – *Slovenská archológia* 44/2, 347–350.
- KOSTRZEWSKI, J. 1919, *Die ostgermanische Kultur de Spätlatènezeit 2: Material.* – Mannus-Bibliothek 19.
- KURPIEWSKI, A., J. RAKOCZY 2015, *Materiały kultury przeworskiej z Perkowa na Kujawach.* – Toruń.
- KYSELA, J., F. OLMER 2014, The Roman amphorae discovered in the excavation of the Bratislava Castel – a preliminary study. – In: M. Musilová, P. Barta, A. Herucová (eds.), *Bratislavský hrad. Dejiny, výskum a obnova*, 163–188, Bratislava.
- v. LEDEBUR, L. 1838, *Das Königliche Museum vaterländischer Alterthümer im Schlosse Monbijou zu Berlin.* – Berlin.
- LEONARDI, P., C. MENGOTTI, D. PANCIERA 1991, Scavi nei prati di proprietà dei sigg. Corradini sotto il cancello presso l'alveare (Scavo 8, 1949). – In: P. Leonardi, *La Val di Fiemme nel Trentino. Dalla preistoria all'alto Medioevo*, 199–202, Calliano (Trento).
- ŁUCZKIEWICZ, P. 2012, Fragen zu Handelsrouten und Fernkontakten im ostgermanischen Raum AM Ende der vorrömischen Eisenzeit. – In: C. Tappert, Ch. Later, J. Fries-Knoblach, P. Ramls, P. Trebsche, S. Wefers, J. Wiethold (eds.), *Wege und Transport. Beiträge zur Sitzung der AG Eisenzeit während der 80. Verbandstagung des West- und Süddeutschen Verbandes für Altertumsforschung e.V. in Nürnberg 2010*, Beiträge zur Ur- und Frühgeschichte Mitteleuropas 69, 111–130.
- MACIAŁOWICZ, A. 2010, Interesujący zespół grobowy z nowych badań na cmentarzysko przeworskiej w Gołębiewie, pow. Nidzica (d. Taubendorf, Kr. Neidenburg). – In: A. Urbaniak et al. (eds.), *TERRA BARBARICA. Studia ofiarowane Magdalenie Mączyńskiej w 65. rocznicę urodzin*, Monumenta Archaeologica Barbarica, Series Gemina II, 368–386.
- MACIAŁOWICZ, A. 2015, Handwerk, Handel und Heirat? Neues über Kontakte der Boier mit den Germanen anhand von Fibelfunden. – In: M. Karwowski, V. Salač, S. Sievers (eds.), *Boier zwischen Realität und Fiktion. Akten des internationalen Kolloquiums in Český Krumlov vom 14.–16.11.2013*, Kolloquien zur Vor- und Frühgeschichte 21, 273–293.
- MARTIN-KILLCHER, S. 2015, Archäologischen Spuren der römischen Okkupation zwischen Alpen und Hochrhein und die städtische Besiedlung der civitas Helvetiorum im 1. Jh. v. Chr.. – In: G. A. Lehmann, R. Wiegels (eds.), *“Über die Alpen und über den Rhein...”, Beiträge zu den Anfängen zum Verlauf der römischen Expansion nach Mitteleuropa*, Abhandlungen der Akademie der Wissenschaften zu Göttingen, N. F. 37, 235–281.
- MELLER, H. 2002, *Die Fibeln aus dem Reitia-Heiligtum von Este (Ausgrabungen 1880 – 1916). Studien zu den Spätlatèneformen.* – Studien zu Vor- und Frühgeschichtlichen Heiligtümern 2, Il Santuario di Reitia a Este 1/1, Mainz am Rhein.
- MUSILOVÁ, M., J. MINAROVIECH 2016, 3D Reconstruction of Roman Buildings from the 1st century BC on the Celtic Hillfort in Bratislava. – In: W. Börner, S. Uhlirz (eds.), *Proceedings of the 20th International Conference on Cultural Heritage and New Technologies 2015 (CHNT 20, 2015)*, Vienna [https://www.chnt.at/wp-content/uploads/eBook\_CHNT20\_Musilova\_Minaroviech\_2015.pdf].
- NIEWĘGŁOWSKI, A. 1972, *Mazowsze na przełomie er: przemiany społeczno-demograficzne i gospodarcze.* – Wrocław.
- NOWAKOWSKI, W. 1995, *Od Galindai do Galinditae. Z badań nad pradziejami bałtyjskiego z Pojezierza Mazurskiego.* – Barbaricum 4.
- NOWAKOWSKI, W. 1996, Wisła – Gotlandia – Niemen. Problem różnokierunkowych kontaktów nad Bałtykiem około przełomu er. – *Studia Gothica* 1, 219–225.
- NOWAKOWSKI, W. 2000, Nowe materiały do badań nad znaleziskami importów rzymskich na dawnych ziemiach pruskich. – In: J. Kolendo, W. Nowakowski (eds.), *Antiquitates Prussiae. Studia z archeologii dawnych ziem pruskich*, 207–235, Warszawa.
- NOWAKOWSKI, W. 2001, *Masuren.* – Corpus der römischen Funde im europäischen Barbaricum. Polen 1, Warszawa.
- NOWAKOWSKI, W. 2005, Na skrzyżowaniu szlaków. Pojezierze Mrągowskie u schyłku starożytności w układzie kontaktów między Bałtykiem a Dunajem i Morzem Czarnym. – *Mrągowskie Studia Humanistyczne* 6–7 (2004/2005), 5–16.
- NOWAKOWSKI, W. 2009, Z problematyki kontaktów bałtyjsko-skandynawskich w okresie wpływów rzymskich. – *Pruthenia* 4, 43–85.
- NOWAKOWSKI, W. 2013, *Masuren in der römischen Kaiserzeit. Auswertung der Archivalien aus dem Nachlass von Herbert Jankuhn.* – Studien zur Siedlungsgeschichte und Archäologie der Ostseegebiete 12.
- OKULICZ-KOZARYN, J., W. NOWAKOWSKI 1996, In search of the Amber Routes. Traces of contacts between South-Eastern Coasts of the Baltic Sea and Celto-Illyrian and Dacian territories. – In: Z. Woźniak (ed.), *Kontakte längs der Bernsteinstraße (zwischen Caput Adriae und der Ostseegebieten) in der Zeit um Christ Geburt. Materialien des Symposiums, Kraków, 26–29. April 1995*, 157–172, Kraków.
- OLĘDZKI, M., L. ZIĄBKA 2017, Tierkopffibeln – TKF from present-day Poland. – In: E. Droberjar, B. Komoróczy (eds.), *Římské a germánské spony ve střední Evropě (Archeologie barbarů 2012)*, Spisy Archeologického ústavu AV ČR 53, 163–168.
- PEISER, F. E. 1919, Gräberfeld bei Grzybowen. – *Sitzungsberichte der Altertumsgesellschaft Prussia* 23/2 (1905–1908), 313–318.

- PETKOVIČ, S. 2010, *Rimske fibule u Srbiji od I do V veka n.e. (Römische Fibeln in Serbien von 1. bis 5. Jh. nach Chr.)* – Arheološki institut. Posebna izdanja, Knjiga 50, Beograd.
- PIETA, K. 1982, *Die Púchov – Kultur*. – *Studia Archaeologica Slovaca Instituti Archaeologici Academiae Scientiarum Slovaca* 1.
- PIETA, K. 1996, Römischer Import der Spätlatènezeit in der Slovakia (Rimskipoznolatenški uvoz na Slovaškem). – *Arheološki vestnik* 47, 183–195.
- PIETA, K. 2010, *Die keltische Besiedlung der Slowakei – jüngere Latènezeit*. – *Archaeologica Slovaca Monographiae*. Studia 12.
- PIETA, K., M. SOJÁK 2004, Kontakty Spiša z okolitými územiami vo včasnej dobe dejinnej. – In: J. Garncarski (ed.), *Okres lateński i rzymski w Karpatach polskich – materiały z konferencji*, 163–179, Krosno.
- POLESKA, P. 2006, *Celtycki mikroregion osadniczy w rejonie podkrakowskim*. – Biblioteka Muzeum Archeologicznego w Krakowie 2.
- RIECKOFF, S. 1975, Münzen und Fibeln aus dem Vicus des Kastells Hüfingen (Schwarzwald-Baar-Kreis). – *Saalburg Jahrbuch. Bericht des Saalburg Museums* 32, 5–104.
- RUDNICKI, M. 2012, Nummi Lugiorum – stary typy krakowskiego. – *Wiadomości Numizmatyczne* 56/1, 1–96.
- RUDNICKI, M., A. DYMOWSKI 2015, Niekończąca się historia – znaleziska monet antycznych z Kujaw. – *Biuletyn Numizmatyczny* 4 (380), 241–270.
- RUDNICKI et al. 2009 = M. Rudnicki, S. Miłek, L. Ziąbka, A. Kędziński 2009, Mennica celtycka pod Kaliszem. – *Wiadomości Numizmatyczne* 53/2, 103–145.
- RUSTOIU, A. 1997, *Fibulele din Dacia preromană (sec. II î.e.n. – I e.n.)*. – București.
- RUSTOIU, A., G. GHEORGHIU 2010, “General” and “Particular” in the dressing fashion and metalwork of Pre-Roman Dacia (an iron variant of the Jezerine-type brooches from Pietra-Craivii – Alba County). – In: I. Cădea (ed.), *Tracii și Vecinii Lor în Antichitate / The Thracians and Their Neighbours in Antiquity. Studia in honorem Valerii Sîbru*, 447–457, Brăila.
- SALZANI, L. 1990, Rinvenimenti archeologici nel Veronese. – *Quaderni di Archeologia del Veneto* 6, 188–190.
- SALZANI, L. 2002, Una Tomba ligule. – In: F. Occhi (ed.), *Pressana. Storia di una comunità e del suo territorio*, 22–23, Verona.
- SCHUSTER, J. 2010, *Lübsow: älterkaiserzeitliche Fürstengräber im nördlichen Mitteleuropa*. – *Bonner Beiträge zur vor- und frühgeschichtlichen Archäologie* 12.
- SEIDLMEYER, H. 2009, *Die Fibeln vom Magdalensberg. Funde der Grabungsjahre 1948–2002 und Altfunde des 19. Jahrhunderts*. – *Archäologische Forschungen zu den Grabungen auf dem Magdalensberg* 16.
- SEIDEL, S., M. LAVARONE 2008, Parte Seconda – Catalogo. – In: M. Buora, S. Seidel (eds.), *Fibule Antiche del Friuli*, Cataloghi e Monografie Archeologiche dei Civici Musei di Udine 9, 81–214.
- SKVORZOV, K. 2012, The formation of a Sambian-Natangian Culture patrimonial elite in the Roman Period in the context of the amber trade. – In: A. Bliujienė (ed.), *People at the crossroads of space and time (footmarks of societies in ancient Europe)* 2, *Archaeologia Balitca* 18, 167–191.
- SOJÁK, M. 2010, Spisz w pradziejach i okresie protohistorycznym (do przełomu er). – In: M. Homza, S. Sroka (eds.), *Historia Scepsusii* 1, 78–123, Bratislava-Kraków.
- v. STADIE, K. 1919, Das Gräberfeld bei Kruglanken, Kr. Angerburg. – *Sitzungsberichte der Altertumsgesellschaft Prussia* 23/2 (1905–1908), 395–408.
- ŠAŠEL KOS, M. 2018, Octavian's Illyrian War: ambition and strategy. – In: M. Mićević Bradač, D. Demicheli (eds.), *The Century of the Brave. Roman Conquest and Indigenous Resistance in Illyricum during the time of Augustus and His Heirs / Stoljeće hrabrih. Rimsko osvajanje i otpor starosjedilaca u Iliriku za vrijeme Augusta i njegovih nasljednika*, *Proceedings of the International Conference*, Zagreb, 22–26.9.2014, 41–57, Zagreb.
- TEICHNER, F., T. SCHIERL 2009, Zur Akkulturation des Westens der Iberischen Halbinseln am Beginn der römischen Kaiserzeit: das Beispiel des Molte da Nora (Terrugem, Portugal). – *Limes XX – Estudios sobre la Frontera, Anejos de Gladius* 13, 301–313.
- VÖLLING, T. 1995, Studien zu Fibelformen der jüngeren vorrömischen Eisenzeit und ältesten römischen Kaiserzeit. – *Bericht der Römisch-Germanischen Kommission* 75 (1994), 149–282.
- WIELOWIEJSKI, J. 1996, Der Forschungsstand über den Hauptweg der Bernsteinstrasse. – In: Z. Woźniak (ed.), *Kontakte längs der Bersteinstraße (zwischen Caput Adriae und der Ostseegebieten) in der Zeit um Christi Geburt. Materialien des Symposiums – Kraków 26.–29. April 1995*, 57–63, Kraków.
- ŻABIŃSKI et al. 2016 = G. Żabiński, A. Rzeszotarska-Nowakiewicz, T. Nowakiewicz, B. Kontny, P. Kucypera 2016, A possible Roman Period sword from Grzybowo (Grzybowen), Masuria, NE Poland. The archaeological and technological context. – *Gladius* 36, 97–140.
- ŻÓRAWSKA, A. 2001, Zapinka typu Jezerine z cmentarzyska w Starym Targu, pow. malborski. – In: J. Kolendo, A. Bursche, B. Paszkiewicz (eds.), *Nowe znaleziska importów rzymskich z ziem polskich II. Korpus znalezisk rzymskich z europejskiego Barbaricum*. *Polska*. Supl. 2, 35–38, Warszawa.
- ŻÓRAWSKA, A. 2005, Wielokulturowe cmentarzysko w Starym Targu w świetle dotychczasowych publikacji, archiwaliów i ocalałych materiałów. – *Wiadomości Archeologiczne* 57 (2004–2005), 111–176.

#### Archival sources:

- GRENZ, *Archive* = Personal files of Rudolf Grenz. Stored in Museum für Archäologie Schloss Gottorf in Schleswig, Germany.
- JANKUHN, *Archive* = Personal files of Herbert Jankuhn. Stored in Museum für Archäologie Schloss Gottorf in Schleswig, Germany.
- SCHMIEDEHELM, *Archive* = Personal files of Marta Schmiedehelm. Stored in Tallinna Ülikooli Arheoloogiline Teaduskogus in Tallin, Estonia.

## Nove najdbe fibul vrste Jezerine iz Poljske

### Povzetek

Med arheološkimi izkopavanji grobišča przeworske kulture v Kleszewu, okrožje Pułtusk (*sl. 1*), na vzhodu Poljske (vzhodna Mazovija), so bile odkrite tri fibule vrste Jezerine. Ena je ležala v grobu I/1961 (kat. št. 1; *sl. 2: 1*), drugi dve pa v grobu 1047 (kat. št. 2 in 3; *sl. 3: 1,2*). Spremljale so jih lokalne vrste fibul (*sl. 2: 2; 3: 3*), ki so datirane v stopnjo A3 poznega predrimskega obdobja, sočasno stopnji LT D2 v srednjeevropskem smislu.

Vse tri so bile izdelane iz medenine (*tab. 1*) in imajo ploski lok, ki se na prehodu proti nogi zoži. Fibuli iz gr. 1047 (*sl. 3: 1,2*) imata na sredini loka podolžno diagonalno narezano rebro. Rebro ima tudi primerek iz gr. I/1961 (*sl. 2: 1*), vendar je manj izraženo in umeščeno na spodnji del loka.

Primerka iz gr. 1047 spadata v tip III po Demetzu (1999), kamor uvrščamo fibule z nepravokotnimi loki. Tovrstne fibule so znane zgolj z nekaj najdišč, skoraj vsa so v severni Italiji (*sl. 4: znak 1; 5*). Ob dveh primerkih iz Kleszewa je bila edina tovrstna fibula na območju severno od Donave odkrita v naselbini púchovske kulture v Púchovu na Slovaškem. Fibula iz gr. I/1961 pripada majhni, svojevrstni skupini fibul vrste Jezerine z enim ali več rebri na spodnji strani loka (*sl. 4: znak 2; 6*). Tovrstne fibule se skoraj izključno pojavljajo na območju severovzhodne Italije in južne Panonije, dva primerka sta bila odkrita še v bližini bratislavskega opiduma na Slovaškem ter en v kraju Krukłanki na Poljskem.

Onkraj meja imperija odkrite fibule tipa Jezerine, izdelane iz medenine, lahko pojasnimo kot rimske importe, v primeru Slovenije in Hrvaške gre za importe iz severne Italije.

Predstavljene fibule iz Kleszewa so – glede na razprostranjenost tovrstnih fibul in surovino –, verjetno izdelki severnoitalskih delavnic iz druge polovice prvega st. pr. n. št.

Na območjih severno od Karpatov je bilo odkritih vsaj 14 fibul vrste Jezerine. Trije primerki tipa IIC so bili odkriti v bližini današnjih Šilut v Litvi (kat. št. 4–6; *sl. 7: 1–3*), en primerek tipa IIC je bil odkrit v kraju Novaâ Derevnâ v Rusiji (kat. št. 7; *sl. 7: 4*), dva primerka na grobiščih kulture Bogaczewo na severovzhodnem Poljskem: prvi, tipa IIA z rebrom na spodnjem delu loka, je iz gr. LVII v Krukłankih (kat. št. 8; *sl. 8: 1*), drugi, tipa

IIC pa iz gr. 2 v kraju Nowy Zyzdrój (kat. št. 9; *sl. 8: 2*). Trije primerki so bili odkriti na najdiščih kultur Oksywie in/ali Wielbark ob spodnjem toku reke Visle na Poljskem: prvi v grobu 34a na najdišču Lubieszewo (kat. št. 10; tip II; *sl. 8: 3*), drugi v grobu 245 na najdišču Stary Targ (kat. št. 11; tip I?; *sl. 8: 4*) in tretji na najdišču Kałdus (kat. št. 12; tip IIA; *sl. 8: 5*). Štiri fibule so bile odkrite na območju przeworske kulture na Poljskem: tri, predstavljene v uvodnem delu prispevka, na najdišču Kleszewo; ena tipa IIC izvira iz nekropole v Goli (kat. št. 13; *sl. 8: 6*), en primerek tipa IIC (kat. št. 14; *sl. 8: 7*) pa iz naselbine Kraków-Pleszów, ki jo je poseljevala multietnična populacija (Kelti in pripadniki przeworske kulture), definirana kot skupina Tyniec.

Zgolj 6 ali 7 naštetih fibul je bilo odkritih v kontekstih, ki dovoljujejo njihovo ožjo datacijo. Trije primerki iz Kleszewa in eden iz Lubieszewega so bili odkriti v zbirih, datiranih v stopnjo A3 poznega predrimskega obdobja (sočasna srednjeevropski stopnji LT D2), fibule iz Gole, Krukłankov in Starega Targa pa so datirane na začetek rimske dobe.

Fibule vrste Jezerine, odkrite na najdiščih onkraj meja rimskega imperija, so običajno interpretirane kot pokazatelj gospodarskih stikov med rimskim imperijem in prebivalci barbarika – v primeru območij severno od Karpatov v zvezi s trgovino z jantarjem. Nekateri raziskovalci so mnenja, da jih, v določenih primerih, lahko povezujemo z navzočnostjo rimske vojske.

Njihova prisotnost na ožini med Alpami in Karpati kaže, da so se na ozemlje današnje Poljske razširile iz keltskih naselbin ob srednjem Podonavju. Njihova zgoščenost v okolici bratislavskega opiduma in večje število primerkov, raztresenih na območju kulture Púchov, (*sl. 4*) morda kažeta na obstoj prometne povezave skozi Moravska vrata. Območje Bratislave namreč leži ob izlivu Morave v Donavo, na izjemni strateški lokaciji, ki je omogočala nadzor nad glavnimi trgovskimi potmi v tem delu Evrope. Njegov pomen se kaže tudi v kovanju lastnih novcev, veliki količini uvoženih izdelkov, depozitih amfor in kamniti arhitekturi, ki morda kaže na prisotnost rimskih obrtnikov. Na trgovsko udejstvovanje prebivalcev tega območja vzdolž jantarne poti opozarja najdba novca vrste

Simmering (*sl.* 9) v Sieluńu ob reki Narew, okrog 30 km severovzhodno od Kleszewa. Na obstoj tesnih stikov med Podonavjem in ozemljem današnje Poljske kažejo tudi najdbe ogledal vrste Zadowice, italskih fibul vrst Gorica, Almgren 238a po Demetzu in Idrija, ki se, razen slednjih, ne pojavljajo na območju kulture Púchov (*sl.* 10).

Najdbe fibul vrste Jezerine na območjih severno od Karpatov so v preteklosti povezovali z jantarno potjo. Sledenje njihovemu postopnemu širjenju nam omogoča rekonstrukcijo poteka enega izmed končnih odsekov te poti, ki je skozi današnjo Mazurijo vodil do izliva reke Nemen. Kot večina uvoženih izdelkov iz predrimskega obdobja so na to območje prišle z juga, s posredovanjem pripadnikov kulturne skupine Tyniec. Prek naselbin przeworske kulture so se nato širile proti severu v Kujavijo (Kuyavia, severni del osrednje Poljske) in proti vzhodni Mazoviji.

Študije in nova arheološka odkritja so na novo osvetlili pomen trgovskih poti, ki so vodile skozi osrednjo Poljsko. Tu so med prevladujočo germansko populacijo przeworske kulture obstajale manjše keltske skupnosti, ki so bile pomemben člen v trgovini z jantarjem. Daljnosežne povezave se ne kažejo zgolj v importih, ampak tudi v novcih. Ob lokalnih kovih, ki so temeljili na denarnem sistemu Bojev, so bili na tem območju namreč odkriti tudi novci iz Podonavja – na območju Kujavije in Mazovije (v Sieluńu) sta bila odkrita novca vrste Simmerling. Predmete iz Kujavije morda lahko povežemo z nekaterimi importi z

najdišč przeworske kulture iz vzhodne Mazovije, čeprav se zdi verjetneje, da so sem prišli po Visli, s posredovanjem kulturne skupine Tyniec (fenomen, ki ga poljska literatura navaja kot viselsko pot in/ali vzhodno vejo jantarne poti). Izdelki poznolatenskih in zgodnjericimskih obrtniških delavnic so tako s posredovanjem populacij na območju Mazovije dosegli baltsko območje.

Najdbe treh fibul vrste Jezerine v Kleszewu, enem izmed grobišč przeworske kulture na območju vzhodne Mazovije, se ujemajo s predstavljenimi dejstvi. Njihovo prisotnost lahko povezujemo s strateško lokacijo bližnje naselbine v neposredni bližini reke Narew, enega glavnih mazovskih vodotokov, ki je omogočal transportne povezave med obsežnimi območji vzhodnega dela osrednje Poljske in njenim severnim delom ter posledično profite iz udeležbe v medregionalni trgovini.

*Prevod: Tina Berden*

Marcin Woźniak  
Dział Archeologii Mazowsza  
Muzeum Starożytnego Hutnictwa  
Mazowieckiego im. S. Woydy  
Plac Jana Pawła II 2  
PL-05-800, Pruszków, woj. mazowieckie  
m.wozniak@msh.m.pl  
<https://orcid.org/0000-0003-0488-8935>

*Illustrations: Fig. 2 (drawing: P. Holub). – Fig. 3 (drawing: P. Holub). – Fig. 7 (photo: Maciałowicz [1a], Szter [2c]). – Fig. 8: (photo: P. Wlizio [3]).*

*Slikovno gradivo: Sl. 2 (risba: P. Holub). – Sl. 3 (risba: P. Holub). – Sl. 7 (foto: Maciałowicz [1a], Szter [2c]). – Fig. 8 (foto: P. Wlizio [3]).*