

The Inscription in the Venetic Alphabet *Ts 5 from Kaštelir above Korte

Napis v venetskem alfabetu *Ts 5 s Kaštelirja nad Kortami

Luka REPANŠEK, Maša SACCARA, Tina ŽERJAL

Izvleček

Na odlomku ostenja amfore, ki se jo da le široko datirati med konec 3. in prvo polovico 1. st. pr. n. št., odkritem na Kaštelirju nad Kortami, so vrezane tri črke v venetskem alfabetu. Napis (*Ts 5) je ohranjen zgolj fragmentarno, predstavlja pa četrti ohranjeni predrimski napis vzhodnega dela *capitis Adriae* in ob napisu na odlomku skodele *Ts 3 iz 2.–1. st. pr. n. št. drugi venetski napis z istega najdišča.

Ključne besede: Slovenija; Kaštelir nad Kortami; amfora; 3.–1. st. pr. n. št.; venetski napis; paleografija

Abstract

A fragment of a wall of an amphora roughly datable between the end of the 3rd and first half of the 1st century BC discovered at Kaštelir above Korte bears a fragmentary inscription (*Ts 5) in the Venetic alphabet consisting of three letters. The find represents the fourth pre-Roman inscription discovered in the eastern part of *Caput Adriae* and together with the inscription on the bowl sherd *Ts 3 from the 2nd/1st century BC the second from the same site.

Key words: Slovenia; Kaštelir above Korte; amphora; 3.–1. century BC; Venetic inscription; palaeography

Kaštelir above Korte is one of the largest fortified prehistoric hilltop settlements in Slovenian Istria. It commanded the area of the Bay of Piran, and settlement remains from the Copper, Bronze, Iron, and Roman periods have been discovered there (Sakara Sučević 2008, 443; 2012, 59). In May 2025, a fragment of an amphora wall bearing a partially preserved pre-Roman inscription was found on the surface¹ of the edge of a cairn located on parcel no. 1734, cad. mun. 2629 (Fig. 1). The

same cairn also contains tegulae and other amphora fragments. It is presumed that the site represents a Roman-period structure that was later partially repurposed as a field hut. In 2014, a similar stone structure was excavated at a higher location on the settlement's summit (parcel 1504, cad. mun. 2629) (see Tomaž, Saccara 2017, 71–100). The majority of the excavated assemblage consists of tableware, kitchenware, and transport ceramics dating to the 3rd–1st century BC.

¹ During the excursion to Slovenia organized by the Department of Prehistoric Archaeology, University of Zurich, traces of writing were observed on an amphora

fragment by a student during a guided tour of the Kašler Archaeological Park led by Dr. Maša Saccara.

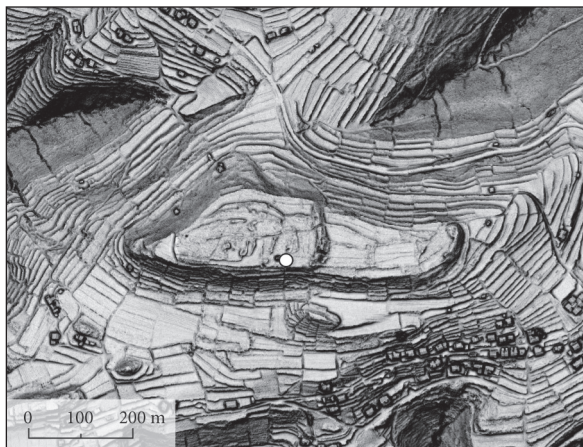


Fig. 1: Kaštelir above Korte: Findspot of the amphora sherd bearing an inscription in the Venetic alphabet.

Sl. 1: Kaštelir nad Kortami: pozicija najdbe odlomka amfore z napisom v venetskem alfabetu.

THE AMPHORA

A sherd bearing a graffito incised *post cocturam* is attributable to the neck of an amphora (Fig. 2). It exhibits macroscopic characteristics consistent with Adriatic production, typical of Greco-Italic amphorae and their successor form, Lamboglia 2, used for wine transport (Carre 1985; Pesavento Mattioli 2014). Both types were manufactured in the same workshops along the western Adriatic coast and in Cisalpine Gaul (Cipriano, Mazzochin 2017; Carre, Pesavento Mattioli 2021). The fine-grained ceramic fabric is pinkish-red in fracture and ochre on the surface, containing sparse inclusions (moderately dense fine particles, rare small and coarse grains of crushed ceramics, occasional particles of limestone, shell, and iron oxides). Such fabric is characteristic for the workshops from Picenum northwards (cf. Horvat 1997, 69: ceramic group S1; Fumolo 2008, 135). The form of the amphora types evolved gradually, making the chronological differentiation of sherds difficult. Greco-Italic amphorae appear from the end of the 4th century BC, but for the present discussion, the later variants of the late 3rd and first three quarters of the 2nd century BC are more relevant as they are more frequently found in the North Adriatic emporia (Sermin, Sevegliano, Istria). After the founding of the colony of Aquileia in 181 BC and the subjugation of the Histri in the Second Histrian War in 178/177 BC, wine trade in Istria and the northern Adriatic increased (Horvat 1997, 60–74; Starac 2006, 86–92; Fumolo 2008, 132–133; Horvat,

Bavdek 2009, 83–89). But the marked expansion of wine trade in the region becomes even more evident only with the subsequent typological successors of the Lamboglia 2 form, made from the last quarter of the 2nd to the mid-1st century BC in the same workshops (Carre, Pesavento Mattioli 2003, 271–272; Fumolo 2008; Horvat, Bavdek 2009, 83–89; Pesavento Mattioli 2014; Starac 2020; Bekljanov Zidanšek, Vojaković, Žerjal 2022).

The inscribed wine amphora sherd can be assigned only a broad chronological range, with the most probable date in the 2nd century BC, although a timeframe extending from the late 3rd century BC to the first half of the 1st century BC remains plausible.

THE INSCRIPTION (*Ts 5)

Even though none of the three preserved letter forms are diagnostically Venetic in shape, the inscription is almost certainly produced in the Venetic alphabet, given that among the inscriptions in the hinterland of Trieste Venetic inscriptions widely predominate, and coupled with the fact that another Venetic inscription (*Ts 3: *vose*), datable to the 2nd or 1st century BC, was recovered from the same archaeological site in 2010 (now published in Repanšek, Saccara 2023).

The south-western group of inscriptions in the Venetic alphabet recovered from the Eastern-Alpine region and the eastern part of *caput Adriae* (see also Repanšek 2023, 29) is composed of two clusters, chronologically spanning from the 5th/4th century until the 1st century BC: to the inner belt (i.e. the Karstic Hinterland) belong Ts 1 (Okostna jama, Škocjan): *.o..s.tiiare.i.* (Pellegrini, Prosdocimi 1967, 604–605; Lejeune 1974: 309), *Ts 2 (Parti near Stara Sušica): *steva* (for the latter reading see Repanšek 2022, 605 fn. 20, cf. Pellegrini 1981), and the yet unpublished inscription from a site near Knežak (kept at the National Museum of Slovenia, Inv. No. P31034). The north-western outlier is the newly published inscription on the rib of a silo from Štanjel (*Ts 4): *[---].a.e.* (Vinazza, Repanšek 2025). In addition to the two inscriptions from Kaštelir above Korte (*Ts 3 and *Ts 5), the littoral belt comprises two finds from Stramare/Štramar near Muggia/Milje, viz. *tulvis* (Pellegrini, Prosdocimi 1967, 605–606), and *au* (Crevatin 1997).

The newly found inscription (henceforth labelled with the siglum *Ts 5) is fragmentary and consists of a sinistroverse sequence *seu[---]*. No interpunc-

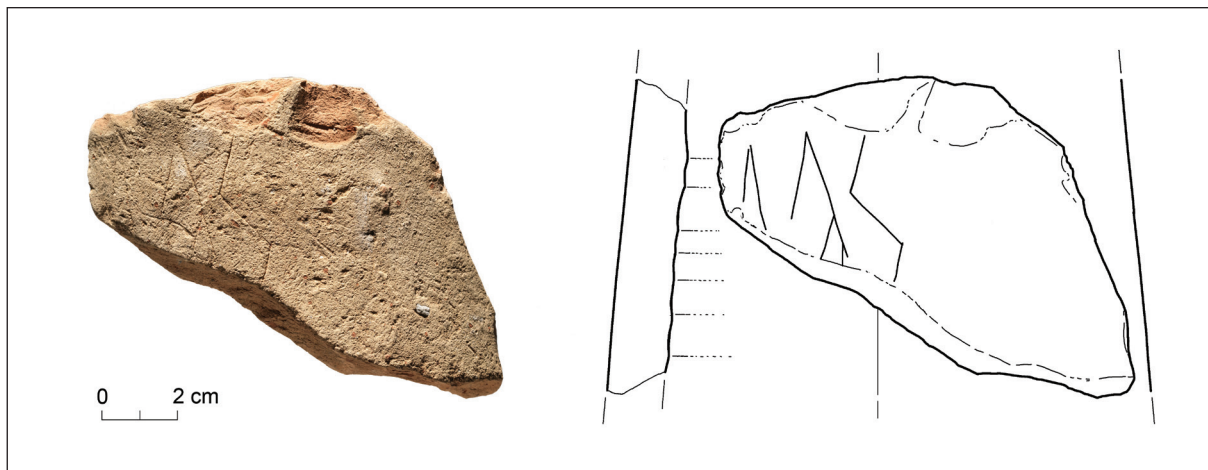


Fig. 2: Fragment of an amphora with the inscription in the Venetic.
Sl. 2: Odlomek amfore z napisom v venetskem alfabetu.

tuation has been applied to the syllable-final *u* (i.e. for expected *se.u.*), which can be paralleled with the two epigraphic finds from Stramare/Štramar (*tulvis* instead of *tu.l.vi.s.* and *au* instead of *.a.u.*). The initial sigma (*s*) is oriented against the direction of the inscription, but inverted sigmas are used commonly enough in the corpus of Venetic inscriptions that this is a trivial feature. Although the lowest articulus of the second letter form is barely visible and the spacing between the second and the third slanting hasta is noticeably smaller than the margin between the two upper hastae, the grapheme is probably to be read as an epsilon (*e*). The last preserved letter is broken off at the bottom, so it could potentially represent an upsilon (*u*) or, less likely, a digamma/wau (*v*).

If the inscription is correctly read as *seu[---]* (rather than *sev[---]*), it represents yet another instance of an inherited diphthong **eu* preserved as such in Venetic (i.e. not rounded to *ou*), as in the case of *vheugo[---]*, *feu.go*, *te.u.ta-*, and *te.u.te.r.s.* (see Lejeune 1974, 110–111; for the latest discussion of the development of Proto-Indo-European

**eu* in Venetic see Prósper 2018, 75–81). The only sequence in the extant corpus that may offer a tentative point of comparison is the female name *so.u.v.na* (Es 55 = MLV 36), if assumed that the latter reflects the younger development of **seu-* to *sou-*, but see Prósper 2018, 77 (against Lejeune 1974, 134) for an alternative etymology.

The only other extant example of an inscription in the Venetic alphabet discovered on an amphora sherd is the fragmentary sequence *manu[---]orknu.i.*, inscribed around the base of the preserved neck of an amphora discovered in San Donà di Piave and dated to the 2nd century BC (see Marinetti 1996). The fact that the attested sequence utilizes interpunctuation proves that we are undoubtedly dealing with an inscription that was produced in the context of Venetic epigraphic tradition, even though none of the purely linguistic features of the inscription are in themselves diagnostically Venetic. If, as proposed by Marinetti (*op. cit.*), the second part of the attested sequence bears a personal name in the dative, the inscription is most likely votive in character.

BEKLJANOV ZIDANŠEK, I., VOJAKOVIĆ, P., ŽERJAL, T. 2022, The Amber route between Caput Adriae and Emona basin: the ceramic evidence on inner road- and water- communications. – In: G. Lipovac Vrkljan, A. Konestra, A. Eterović (eds.), *Roman pottery and glass*

manufactures : production and trade in the Adriatic region and beyond : Proceedings of the 4th International Archaeological Colloquium (Crikvenica, 8–9 November 2017), Archaeopress Roman archaeology 94, 321–330.

- CARRE, M.-B. 1985, Les amphores de la Cisalpine et de l'Adriatique au début de l'Empire. – *Mélanges de l'École Française de Rome* 97, 207–245.
- CARRE, M.-B., S. PESAVENTO MATTIOLI 2003, Anfore e commerci nell'Adriatico. – In: F. Lenzi (ed.), *L'Archeologia dell'Adriatico dalla Preistoria al Medioevo. Atti del convegno internazionale Ravenna, 7–8–9 giugno 2001*, 268–285, Firenze.
- CARRE, M.-B., S. PESAVENTO MATTIOLI 2021, The content of amphorae from Adriatic Italy. – In: *Amphora Contents* 2021, 273–279.
- CIPRIANO, S., S. MAZZOCCHIN 2017, Western Adriatic amphorae production: the research status. – In: G., Lipovac Vrkljan, I. Radić Rossi, A. Konestra (eds.), *Adriamphorae. Amfore kao izvor za rekonstrukciju gospodarskoga razvoja jadranske regije u antici: lokalna proizvodnja. Radovi s okruglog stola, Zagreb, 21. travnja 2016*, 33–47, Zagreb.
- CREVATIN, F. 1997, Nuovo testo Venetio da Trieste. – *Incontri linguistici* 20, 231.
- FUMOLO, M. 2008, Le anfore italiche: contesti e tipologia. – In: M. Buora (ed.), *Sevegliano romana. Crocevia commerciale dai Celti ai Longobardi*, 130–151, Udine.
- HORVAT, J. 1997, *Sermin. Prazgodovinska in zgodnjerimska naselbina v severozahodni Istri / Sermin. A Prehistoric and Early Roman Settlement in Northwestern Istria*. – Opera Instituti Archaeologici Sloveniae 3. <https://doi.org/10.3986/9789610503170>
- HORVAT, J., A. BAVDEK 2009, *Okra. Vrata med Sredozemljem in Srednjo Evropo / Odra. The gateway between the Mediterranean and Central Europe*. – Opera Instituti Archaeologici Sloveniae 17. <https://doi.org/10.3986/9789612545635>
- LEJEUNE, M. 1974, *Manuel de la langue vénète*. – Heidelberg.
- MARINETTI, A. 1996, San Donà di Piave. Iscrizione venetica. Ritrovamento occasionale. – In: L. Malnati, P. Croce Da Villa, E. Di Filippo Balestrazzi (eds.), *La protostoria tra Sile e Tagliamento: antiche genti tra Veneto e Friuli: mostra archeologica, Concordia Sagittaria – Basilica paleocristiana 14 settembre – 10 novembre 1996, Pordenone – ex Convento di S. Francesco 23 novembre 1996 – 8 gennaio 1997*, 99–100, Padova.
- PELLEGRINI, G. B. 1981, Osservazioni epigrafiche (Epigrafiska ugotavljanja). – *Arheološki vestnik* 32, 311–314.
- PELLEGRINI, G. B., PROSDOCIMI, A. L. 1967, *La lingua venetica I–II*. – Padova, Firenze.
- PESAVENTO MATTIOLI, S. 2014, Le produzioni di anfore vinarie nei territori adriatici: questioni di metodo. – In: G. Lipovac Vrkljan, B. Šiljeg, I. Ožanić Roguljić, A. Konestra (eds.), *Rimske keramičarske i staklarske radionice: proizvodnja i trgovina na jadranskom prostoru*, 191–198, Zagreb, Crikvenica.
- PRÓSPER, B. M. 2018, The Venetic Inscription from Monte Manicola and Three termini publici from Padua: A Reappraisal. – *The Journal of Indo-European Studies* 46/1–2, 47–107.
- REPANŠEK, L. 2022, Posoškovenski areal v luči novejših epigrafskih najdb (Isonzian Venetic inscriptions in the light of recent finds). – *Arheološki vestnik* 73, 601–615. <https://doi.org/10.3986/AV.73.16>
- REPANŠEK, L. 2023, Tweets from the Past: Slovenian archaeology through the first written words. – In: D. Pavlovič (ed), *Tweets from the past: Slovenian archaeology through sounds, symbols and first written words*, 28–35, Ljubljana.
- REPANŠEK, L., SACCARA, M. 2023, The Venetic inscription *Ts 3 from Kaštelir above Korte (Venetski napis *Ts 3 s Kaštelirja nad Kortami). – *Arheološki vestnik* 74, 309–314. <https://doi.org/10.3986/AV.74.09>
- SAKARA SUČEVIĆ, M. 2008, Tri prazgodovinske naselbine na slovenski obali: revizija izkopenega gradiva s Sermina, Kaštelirja na Kortami in iz Pirana. – *Annales. Series historia et sociologia* 18/2, 439–454. <http://www.dlib.si/details/URN:NBN:SI:DOC-XKRJNKRJ>
- SAKARA SUČEVIĆ, M. 2012, *Prazgodovinska keramika med Miljskim zalivom in porečjem Mirne*. – PhD thesis / Doktorska disertacija, Univerza na primorskem, Koper. <https://repozitorij.upr.si/IzpisGradiva.php?lang=slv&id=2971>
- STARAC, A. 2006, Promet amforama prema nalazima u Rovinjskom podmorju. – *Histria archaeologica* 37, 85–116.
- STARAC, A. 2020, *Deposit of Amphorae in the Quarter of St. Theodore, Pula*. – *Archaeopress Roman Archaeology* 75.
- TOMAŽ, A., SACCARA, M. 2017, Arheološke raziskave na lokaciji Kaštelir nad Kortami v letu 2014. – *Studia universitatis hereditati* 5/2, 71–100.
- VINAZZA, M., REPANŠEK, L. 2025, Venetic inscription on the silo from Štanjel (Venetski napis na silosu iz Štanjela). – *Arheološki vestnik* 76, 195–200. <https://doi.org/10.3986/AV.76.07>

Venetski napis *Ts 5 s Kaštelirja nad Kortami

Prevod

Kaštelir nad Kortami je ena največjih utrjenih prazgodovinskih višinskih naselbin slovenske Istre. Gradišče je nadzorovalo Piranski zaliv, naselbinski ostanki pa segajo v bakreno, bronasto in železno dobo ter v rimsko obdobje (Sakara Sučević 2008, 443; 2012, 59). Maja 2025 je bil tam odkrit odlomek ostenja amfore s fragmentarno ohranjenim predrimskim napisom, ki je ležal na površini¹ kamnite groblje na parceli št. 1734, k. o. 2629 (*sl. 1*). Na kamniti groblji se nahajajo še tegule in kosi drugih amfor. Domnevamo, da gre za starejšo strukturo, ki je bila kasneje deloma uporabljena za poljsko hiško. Podobna kamnita struktura je bila leta 2014 izkopana višje na vrhu naselbine, na parceli št. 1504, k. o. 2629 (Tomaž, Saccara 2017, 71–100). Večina izkopanega gradiva pripada namizni, kuhinjski in transportni keramiki iz poznorepublikanskega obdobja.

AMFORA

Odlomljeni del ostenja z grafitom, vpraskanim *post cocturam*, pripada vratu amfore (*sl. 2*). Makroskopske značilnosti keramike nakazujejo na jadransko proizvodnjo, značilno za grško-italske amfore in njihove naslednice, amfore Lamboglia 2 za prevoz vina (Carre 1985; Pesavento Mattioli 2014). Oba tipa so izdelovali v istih delavnicah na zahodni obali Jadrana in v Cisalpini (Cipriano, Mazzochin 2017; Pesavento Mattioli, Carre 2021). Drobnozrnata keramika odlomka je v prelomu rozasto rdeče in na površini oker barve z redkimi primesmi (zmerno gosta fina, redka drobna in groba zrnca zdrobljene keramike, zelo redka zrnca apnenca, školjčnih lupin in železovih oksidov). Značilna je za izdelke delavnic od Picena proti severu (prim. Horvat 1997, 69; keramična skupina S1; Fumolo 2008, 135).

Oblike celih amfor tekoče prehajajo ena v drugo, kar onemogoča kronološko razlikovanje pri odlomkih. Grško-italske amfore so izdelovali

od konca 4. st. pr. n. št. Za dotično diskusijo so pomembnejše mlajše različice grško-italskih amfor iz konca 3. in prvih treh četrtin 2. st. pr. n. št., saj so pogosteje odkrite v severnojadranskih emporijih (Sermin, Sevegliano, Istra). Po dedukciji latinske kolonije Akvileja leta 181 pr. n. št. in pokoritvi Histrov v drugi histrski vojni v letih 178/177 pr. n. št. se trgovanje z vinom v Istri in na severnem Jadranu poveča (Horvat 1997, 60–74; Starac 2006, 86–92; Fumolo 2008, 132–133; Horvat, Bavdek 2009, 83–89). Pravemu razcvetu prodaje v regiji sledimo šele z naslednjo razvojno obliko amfor Lamboglia 2, ki so jih izdelovali od zadnje četrtine 2. st. pr. n. št. do sredine 1. st. pr. n. št. v istih delavnicah (Pesavento Mattioli 2000, 108–109; Carre, Pesavento Mattioli 2003b, 271–272; Fumolo 2008; Horvat, Bavdek 2009, 83–89; Pesavento Mattioli 2014; Starac 2020; Bekljanov Zidanšek, Vojaković, Žerjal 2022).

Odlomek vinske amfore z napisom zato le široko datiramo od konca 3. st. pr. n. št., verjetneje pa v 2. st. in morda prvo polovico 1. st. pr. n. št.

NAPIS (*Ts 5)

Četudi nobena od ohranjenih črk ne spada med grafeme z diagnostično vrednostjo, je napis najverjetneje v venetskem alfabetu, saj v sklopu predrimskih epigrafskih najdb širšega tržaškega zaledja glavnino zavzemajo venetski napisi. Dodatno v prid venetski provenienci izpričane sekvence govori tudi dejstvo, da je na istem arheološkem najdišču identificiran še en venetski napis (*Ts 3: *vose*), datiran v obdobje med 2. in 1. st. pr. n. št. (odkrit leta 2010, objavljen v Repanšek, Saccara 2023).

Jugozahodno skupino predrimskih napisnih najdb jugovzhodnoalpskega prostora in *capitis Adriae*, ki segajo v obdobje med 5./4. in 2./1. st. pr. n. št. (gl. Repanšek 2023, 29), tvorita dva areala. Zaledni poteka v pasu med Okostno jamo pri Škocjanu (Ts 1: *.o..s.tiiare.i.*, gl. Pellegrini, Prosdocimi 1967, 604–605, Lejeune 1974: 309), Parti pri Stari Sušici (*Ts 2: *steva*; gl. Repanšek 2022, 605 fn. 20, prim. Pellegrini 1981) in Knežakom (neobjavljeno, hrani Narodni muzej Slovenije, inv. št. P31034). Izven te jedrne skupine se na severozahodnem robu nahaja

¹ Med ekskurzijo v Slovenijo, ki jo je organiziral Odelek za prazgodovinsko arheologijo Univerze v Zürichu, so bili med vodenim ogledom Arheološkega parka Kašler pod vodstvom dr. Maše Saccara na odlomku amfore opaženi sledovi napisu.

(para)napis na fragmentu silosa s Štanjela (*Ts 4: [---].a.e.; gl. Vinazza, Repanšek 2025). Priobalni areal poleg obeh napisov s Kaštelirja nad Kortami (*Ts 3 in *Ts 5) tvorita še dva napisa iz Štarmarja pri Miljah, in sicer *tulvis* (Pellegrini, Prosdocimi 1967, 605–606) in *au* (Crevatin 1997).

Novoodkriti napis (odslej označen s siglo *Ts 5) je ohranjen fragmentarno, sestavlja pa ga zaporedje treh črk *seu*[---], ki potekajo od desne proti levi. Izglasni *u* ni interpunktuiran (tj. za pričakovano *se.u.*), a enako značilnost izkazujeta tudi obe napisni najdbi iz Štarmarja (*tulvis* namesto *tu.l.vi.s.* in *au* namesto *.a.u.*). Vzglasna sigma (*s*) je sicer orientirana v obratni smeri od tiste, v katero poteka napis, a gre za trivialno paleografsko značilnost, saj so sigme v venetskih napisih pogosto invertirane. Čeprav je najnižja kratka poševna hasta druge črke slabo vidna in je med njo ter vzporedno hasto neposredno nad njo razmik občutno manjši kot med prvo in drugo poševno zarezo, grafem najverjetneje predstavlja črko epsilon (*e*). Kar se tiče tretjega grafema, spodnji del zaradi fragmentacije ohranjenega kosa ni več viden, tako da se kot možna ponujata ipsilon (*u*) ali, manj verjetno, digama (*v*).

Če je interpretacija napisa kot zaporedje *seu*[---] (in ne *sev*[---]) pravilna, ta predstavlja še en primer

ohranitve podedovanega dvoglasnika **eu* kot *eu* v venetščini (tj. z izostankom zaokroženja v *ou*), primerljiv z zgledi kot *vheugo*[---], *feu.go*, *te.u.ta* in *te.u.te.r.s.* (gl. Lejeune 1974, 110–111; za diskusijo o razvoju praindoevropskega dvoglasnika **eu* v venetščini gl. Prósper 2018, 75–81). Edino zaporedje v korpusu venetskih napisov, s katerim bi se dalo previdno vzporejati novo epigrafsko najdbo s Kaštelirja, je žensko osebno ime *so.u.v.na* (Es 55 = MLV 36), a le pod pogojem, da slednje izkazuje mlajši prehod podedovanega **seu-* v *sou-* (glede slednjega gl. Lejeune 1974, 134, a prim. alternativno etimološko interpretacijo pri Prósper 2018, 77).

Edini drugi doslej identificirani primer napisa v venetskem alfabetu na amfori je *manu*[---]*orknu.i.*, ki je fragmentarno ohranjen na dnu odlomljenega vratu amfore iz San Donà di Piave, datirane v 2. st. pr. n. št. (gl. Marinetti 1996). Da gre tudi v tem primeru zanesljivo za venetski napis, nedvomno dokazuje delna uporaba interpunktov, četudi z vidika samih jezikovnih značilnosti napisa ni diagnostičnih znakov, da gre za venetščino. Če je pravilen sklep, da se vsaj v drugem delu sekvence ohranja osebno ime v dajalniku, kot predlaga Marinetti (*op. cit.*), je napis vsekakor votivne narave.

Luka Repanšek

Oddelek za primerjalno in splošno jezikoslovje

Filozofska fakulteta Univerze v Ljubljani

Aškerčeva 2

SI-1000 Ljubljana

luka.repansek@ff.uni-lj.si

ORCID: <https://orcid.org/0000-0001-6530-7597>

Maša Saccara

Pokrajinski muzej Koper

Kidričeva ulica 19

SI-6000 Koper

masa.saccara@pokrajinskimuzejkoper.si

Znanstveno raziskovalno središče Koper

Garibaldijeva 1

SI-6000 Koper

masa.saccara@zrs-kp.si

Tina Žerjal

Ob Ljubljani 2

1360 Vrhnika

tina.zerjal@guest.arnes.si

ORCID: <https://orcid.org/0000-0002-3612-4449>

Illustrations: Fig. 2 (photo: T. Lauko, NMS; drawing: I. Murgelj, NMS).

Slikovno gradivo: Sl. 2 (foto: T. Lauko, NMS; risba: I. Murgelj, NMS).

No new data were generated or analysed in support of this research. / Za podporo tej raziskavi niso bili pridobljeni ali analizirani nobeni novi podatki.

L. Repanšek acknowledges the financial support from the Slovenian Research and Innovation Agency, research core funding No. P6-0218.

Prispevek L. Repanška je nastal v okviru raziskovalnega programa P6-0218, ki ga financira Javna agencija za znanstveno-raziskovalno in inovacijsko dejavnost Republike Slovenije.