

ACTA GEOGRAPHICA SLOVENICA

GEOGRAFSKI
ZBORNIK



HOLOCENE CLIMATE VARIABILITY IN SLOVENIA: A REVIEW

GEOSCAPES 4

2024
64
2

**ACTA GEOGRAPHICA
SLOVENICA
GEOGRAFSKI ZBORNIK**

**HOLOCENE CLIMATE VARIABILITY
IN SLOVENIA: A REVIEW**

GEOCAPES 4

64-2

2024

ZNANSTVENORAZISKOVALNI CENTER
SLOVENSKE AKADEMIJE ZNANOSTI IN UMETNOSTI
GEOGRAFSKI INŠTITUT ANTONA MELIKA

RESEARCH CENTRE OF
THE SLOVENIAN ACADEMY OF SCIENCES AND ARTS
ANTON MELIK GEOGRAPHICAL INSTITUTE

ACTA GEOGRAPHICA SLOVENICA GEOGRAFSKI ZBORNIK

HOLOCENE CLIMATE VARIABILITY IN SLOVENIA: A REVIEW

GEOSCAPES 4

64-2
2024



Založba ZRC



LJUBLJANA
2024

ACTA GEOGRAPHICA SLOVENICA

64-2
2024

ISSN: 1581-6613

UDC: 91

2024, ZRC SAZU, Geografski inštitut Antona Melika

International editorial board/mednarodni uredniški odbor: Zoltán Bátor (Hungary), David Bole (Slovenia), Marco Bontje (the Netherlands), Mateja Breg Valjavec (Slovenia), Michael Bründl (Switzerland), Rok Ciglič (Slovenia), Špela Čonč (Slovenia), Lóránt Dénes Dávid (Hungary), Mateja Ferk (Slovenia), Matej Gabrovec (Slovenia), Matjaž Geršič (Slovenia), Maruša Goluža (Slovenia), Mauro Hrvatin (Slovenia), Ioan Ianos (Romania), Peter Jordan (Austria), Drago Kladnik (Slovenia), Blaž Komac (Slovenia), Jani Kozina (Slovenia), Matej Lipar (Slovenia), Dénes Lóczy (Hungary), Simon McCarthy (United Kingdom), Slobodan B. Marković (Serbia), Janez Nared (Slovenia), Cecilia Pasquinelli (Italy), Drago Perko (Slovenia), Florentina Popescu (Romania), Garri Raagmaa (Estonia), Ivan Radevski (North Macedonia), Marjan Ravbar (Slovenia), Aleš Smrekar (Slovenia), Vanya Stamenova (Bulgaria), Annett Steinführer (Germany), Mateja Šmid Hribar (Slovenia), Jure Tičar (Slovenia), Jernej Tiran (Slovenia), Radislav Tošić (Bosnia and Herzegovina), Mimi Urbanc (Slovenia), Matija Zorn (Slovenia), Zbigniew Zwolinski (Poland)

Editors-in-Chief/glavna urednika: Rok Ciglič, Blaž Komac (ZRC SAZU, Slovenia)

Executive editor/odgovorni urednik: Drago Perko (ZRC SAZU, Slovenia)

Chief editors/področni urednik (ZRC SAZU, Slovenia):

- *physical geography/fizična geografija:* Mateja Ferk, Matej Lipar, Matija Zorn
- *human geography/humana geografija:* Jani Kozina, Mateja Šmid Hribar, Mimi Urbanc
- *regional geography/regionalna geografija:* Matej Gabrovec, Matjaž Geršič, Mauro Hrvatin
- *regional planning/regionalno planiranje:* David Bole, Janez Nared, Maruša Goluža
- *environmental protection/varstvo okolja:* Mateja Breg Valjavec, Jernej Tiran, Aleš Smrekar

Editorial assistants/uredniška pomočnika: Špela Čonč, Jernej Tiran (ZRC SAZU, Slovenia)

Journal editorial system manager/upravnik uredniškega sistema revije: Jure Tičar (ZRC SAZU, Slovenia)

Issued by/izdajatelj: Geografski inštitut Antona Melika ZRC SAZU

Published by/založnik: Založba ZRC

Co-published by/sozaložnik: Slovenska akademija znanosti in umetnosti

Address/naslov: Geografski inštitut Antona Melika ZRC SAZU, Gosposka ulica 13, p. p. 306, SI – 1000 Ljubljana, Slovenija;
ags@zrc-sazu.si

The articles are available on-line/prispevki so dostopni na medmrežju: <http://ags.zrc-sazu.si> (ISSN: 1581–8314)

This work is licensed under the/delo je dostopno pod pogoji: Creative Commons CC BY-NC-ND 4.0

Ordering/naročanje: Založba ZRC, Novi trg 2, p. p. 306, SI – 1001 Ljubljana, Slovenija; zalozba@zrc-sazu.si

Annual subscription/letna naročnina: 20 €

Single issue/cena posamezne številke: 12 €

Cartography/kartografija: Geografski inštitut Antona Melika ZRC SAZU

Translations/prevodi: DEKS, d. o. o., Živa Malovrh

DTP/prelom: SYNCOMP, d. o. o.

Printed by/tiskarna: Birografika Bori

Print run/naklada: 250 copies/izvodov

The journal is subsidized by the Slovenian Research and Innovation Agency (B6-7326) and is issued in the framework of the Geography of Slovenia core research programme (P6-0101)/Revija izhaja s podporo Javne agencije za znanstvenoraziskovalno in inovacijsko dejavnost Republike Slovenije (B6-7326) in nastaja v okviru raziskovalnega programa Geografija Slovenije (P6-0101).

The journal is indexed also in/revija je vključena tudi v: Clarivate Web of Science (SCIE – Science Citation Index Expanded); JCR – Journal Citation Report/Science Edition), Scopus, ERIH PLUS, GEOBASE Journals, Current geographical publications, EBSCOhost, Georef, FRANCIS, SJR (SCImago Journal & Country Rank), OCLC WorldCat, Google Scholar, CrossRef, and DOAJ.

Design by/Oblikovanje: Matjaž Vipotnik

Front cover photography: Alpine landscapes contain many traces of past conditions, which are also recorded in tree rings (photograph: Matej Lipar).

Fotografija na naslovnici: Alpske pokrajine hranijo številne sledi preteklih razmer, ki so zapisane tudi v letnicah dreves (fotografija: Matej Lipar).

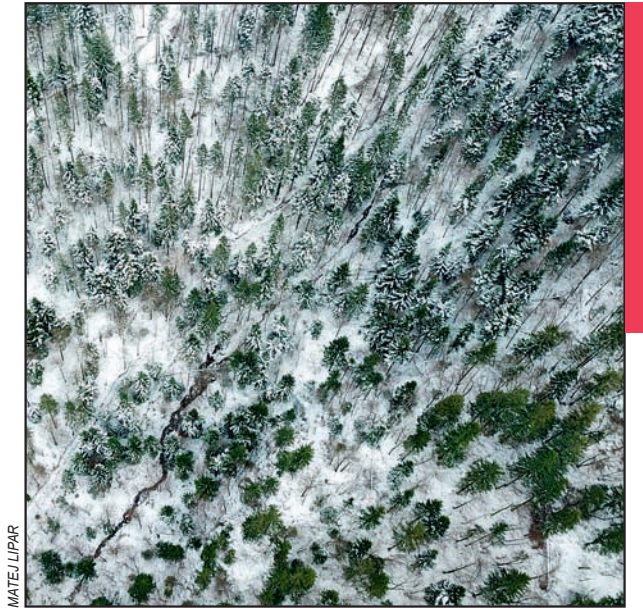
Contents

**Matej LIPAR, Sonja LOJEN, Mateja BREG VALJAVEC, Maja ANDRIČ,
Andrej ŠMUC, Tom LEVANIČ, Jure TIČAR, Matija ZORN, Mateja FERK**
Holocene climate variability in Slovenia: A review

7

HOLOCENE CLIMATE VARIABILITY IN SLOVENIA: A REVIEW

Matej Lipar, Sonja Lojen, Mateja Breg Valjavec, Maja Andrič, Andrej Šmuc,
Tom Levanič, Jure Tičar, Matija Zorn, Mateja Ferik



Forest vegetation changes are direct evidence of climatic variability.

DOI: <https://doi.org/10.3986/AGS.12798>

UDC: 551.583.7(497.4)“628.64”

Creative Commons CC BY-NC-ND 4.0

Matej Lipar¹, Sonja Lojen^{2,3}, Mateja Breg Valjavec¹, Maja Andrič⁴, Andrej Šmuc⁵, Tom Levanič⁶, Jure Tičar¹, Matija Zorn¹, Mateja Ferk¹

Holocene climate variability in Slovenia: A review

ABSTRACT: The Slovenian climate has undergone significant fluctuations, and an understanding of the past climate is necessary to improve models and recognise long-term patterns. The cryosphere environment, such as ice core samples, provides valuable palaeoclimate data. Palynology and dendroclimatology are also effective ways to study long-term changes in vegetation and reconstruct past climates using pollen and tree proxies. Sediment cores from various locations in Slovenia have been studied to understand past environmental changes. Borehole temperature profiles as well as historical records were also used to reconstruct past climate conditions. Studies have shown specific periods when climatic changes likely played a major role, but a complete timeline of the Slovenian climate throughout the Holocene has not yet been fully developed.

KEYWORDS: palaeoclimate, climate proxy, glaciers, pollen, tree-rings, sediment, speleothems, historical data

Holocenska podnebna spremenljivost v Sloveniji: pregled

POVZETEK: Podnebje v Sloveniji je doživljalo velika nihanja in razumevanje preteklega podnebja je nujno za izboljšanje modelov in prepoznavanje dolgoročnih vzorcev. Kriosferno okolje, kot so vzorci ledenih jeder, zagotavlja dragocene paleopodnebnne podatke. Tudi palinologija in dendroklimatologija sta učinkovita načina za preučevanje dolgoročnih sprememb rastja in rekonstrukcijo preteklega podnebja z uporabo analiz cvetnega prahu in drevesnih branik. Sedimentna jedra z različnih lokacij v Sloveniji so bila preučena za razumevanje preteklih okoljskih sprememb. Za rekonstrukcijo preteklih podnebnih razmer so bili uporabljeni tudi temperature v vrtinah in zgodovinski viri. Študije so pokazale določena obdobja, v katerih so podnebne spremembe najverjetneje imele pomembno vlogo, vendar celotna časovnica sprememb slovenskega podnebja v holocenu še ni popolnoma izdelana.

KLJUČNE BESEDE: paleopodnebnje, podnebni podatki, ledenik, cvetni prah, branike, sediment, siga, zgodovinski podatki

The article was submitted for publication on June 12th, 2023.

Uredništvo je prejelo prispevek 12. junija 2023.

¹ Research Centre of the Slovenian Academy of Sciences and Arts, Anton Melik Geographical Institute, Ljubljana, Slovenia

matej.lipar@zrc-sazu.si (<https://orcid.org/0000-0003-4414-0147>), mateja.breg@zrc-sazu.si (<https://orcid.org/0000-0002-7581-758X>), jure.ticar@zrc-sazu.si (<https://orcid.org/0000-0003-3567-8084>), matija.zorn@zrc-sazu.si (<https://orcid.org/0000-0002-5788-018X>), mateja.ferk@zrc-sazu.si (<https://orcid.org/0000-0003-0145-7590>)

² Jožef Stefan Institute, Department of Environmental Sciences, Ljubljana, Slovenia

³ University of Nova Gorica, School of Environmental Sciences, Nova Gorica, Slovenia
sonja.lojen@ijs.si (<https://orcid.org/0000-0001-8267-4372>)

⁴ Research Centre of the Slovenian Academy of Sciences and Arts, Institute of Archaeology, Ljubljana, Slovenia
maja.andric@zrc-sazu.si (<https://orcid.org/0000-0003-1211-7081>)

⁵ University of Ljubljana, Faculty of Natural Science and Engineering, Department of Geology, Ljubljana, Slovenia
andrej.smuc@ntf.uni-lj.si (<https://orcid.org/0000-0002-7883-4676>)

⁶ Slovenian Forestry Institute, Ljubljana, Slovenia
tom.levanic@gozdis.si (<https://orcid.org/0000-0002-0986-8311>)

1 Introduction

The climate has constantly changed during Earth's different geologic ages, and over the last two and a half million years of the Quaternary period (Gibbard and Head 2020) the climate has periodically oscillated between cold and warm episodes referred to as glacial and interglacial periods. We are currently experiencing climate variabilities of the warm interglacial period, also termed the Holocene epoch.

The modern climate is monitored by various agencies (e.g., the Global Observing System of the World Meteorological Organization, the International Telecommunication Union (ITU), and the European Earth Observation Programme as part of the Copernicus Programme), and climate variability and changes in Slovenia are monitored by the Slovenian Environment Agency. However, reliable data only span approximately 80 years, and to increase the reliability of models for major and minor climate variabilities, knowledge of climate variability in Slovenia in the past is needed. Holocene climate variabilities provide robustness of short-term climate events and are therefore essential for accurate predictions of future climate variabilities, including the environmental response to these changes. How the climate has evolved on a global scale during the Holocene is controversial due to large amounts of opposing palaeoclimate data from a variety of regions (e.g., Jiang et al. 2012; Marcott et al. 2013; Liu et al. 2014; Marsicek et al. 2018; Affolter et al. 2019); however, this also suggests that many palaeoclimate peculiarities and events occurred on a regional scale, and our understanding of recent climate variabilities should thus rely more on local evidence (Mayewski et al. 2004; Thornton et al. 2014; Wake 2015).

There are four main types of climate in Slovenia: a temperate humid climate in the west; a temperate continental climate in the central and eastern part; a mountain climate in the mountain areas of north-western, northern, and part of southern Slovenia; and a sub-Mediterranean climate in the southwest (Komac, Pavšek and Topole 2020). This climate diversity would require climate reconstructions for different climate types to produce a reliable picture of the past climate of Slovenia. Nevertheless, since the reconstructions and interpretations of climate variabilities throughout the entire Holocene for the Slovenian territory are scarce, this article summarises all of them together.

The Holocene data for Slovenia come from a variety of disciplines, spanning from cryosphere (Section 2.1) to geological analyses of clastic sediments (Section 2.2), palynology (Section 2.3), dendrochronology (Section 2.4), speleothems (Section 2.5), and historical sources (Section 2.7). This article reviews up-to-date interpretations of climate variability in Slovenia during the Holocene until the beginning of modern instrumental records based on studies of the Slovenian territory, collates climate data from various proxies, and subsequently highlights the gaps in the existing literature and promotes further research. To make the timeline and dates of events consistent, we report them in kiloyears (ka) before present (BP); very recent (and mostly historical) events in the last millennium are given in years Anno Domini (AD).

1.1 The Holocene

The Holocene epoch (11.65 ka to present; the name comes from Greek ὅλος, *holos* 'entirely' + καινός, *kainos* 'new' because preserved fossils from this epoch are of species not predating *Homo sapiens*; Gervais 1847), together with the preceding Pleistocene epoch (2.58 million years (Ma) to 11.65 ka BP; the name comes from Greek πλεῖστος, *pleistos* 'mostly' + καινός, *kainos* 'new'; Lyell 1839), is part of the Quaternary (the name comes from Latin *quaternarius* 'consisting of four parts' because it is the fourth and final subdivision of the previously proposed threefold subdivision of the geological record (Primary, Secondary and Tertiary; Desnoyers 1829; Walker et al. 2019; Head, Pillans and Zalasiewicz 2021). The Holocene was initiated by the changes in insolation due to the eccentricity of Earth's orbit, and obliquity and precession of Earth's axis, termed Milankovitch cycles (Berger 1988; Hobart et al. 2023; Watanabe et al. 2023). The additional variability of hydrological and temperature conditions during the Holocene is attributed to solar variability, volcanic aerosols, changes in air circulation, changes in the extent of continental ice, and greenhouse gas concentrations (Mayewski et al. 2004; Brayshaw, Hoskins and Black 2010; Brayshaw, Rambeau and Smith 2011). Sea surface warming started around 17–20 ka in Antarctica (Rahmstorf 2002), whilst the apparent warming in the Northern Hemisphere (Greenland) was detected 14.6 ka ago, with the delay most likely due to ocean currents (Gregoire et al. 2016). The initial warming was interrupted by the cold Younger Dryas event, which ended around 11.65 ka, marking the formal beginning of the Holocene (Walker et al. 2009; 2019).

The currently adopted formal subdivision of the Holocene, ratified by the Executive Committee of the International Union of Geological Sciences (IUGS) on June 14th, 2018, is based on the universal use of geochronology constrained by a series of geochronometric methods (Walker et al. 2019; Head, Pillans and Zalasiewicz 2021). It starts with the oldest Greenlandian (Global Stratotype Section and Point (GSSP) in the North Greenland Ice Core Project ice core 2 (NGRIP2); corresponding to the Lower/Early Holocene) dated at 11.65 ka. Climate records from the Greenland area show very rapid warming, even exceeding 10°C in a decade or two (Alley 2000). The second is the Northgrippian (GSSP in the Greenland ice core 1, NGRIP1; corresponding to the Middle Holocene), dated to 8.186 ka. The last is the Meghalayan (GSSP in a speleothem from the Mawmluh Cave, northeastern India; corresponding to the Upper/Late Holocene), with a date of 4.2 ka.

Based on climate variability, the Holocene is also characterized by a variety of »periods« of global, hemispheric, or regional extent. For example, Mayewski et al. (2004) presented six global periods of significant Rapid Climate Change (RCC) during the Holocene, driven by Earth's orbital variations, solar variability, and potentially to some extent by volcanic aerosol production, causing polar cooling, tropical aridity, and major atmospheric circulation changes during 9–8 ka, 6–5 ka, 4.2–3.8 ka, 3.5–2.5 ka, 1.2–1 ka, and 0.6–0.15 ka. »Cold« periods were also identified based on regional and/or individual data-dependent studies; for example, the Misox (8.4–7.3 ka), Frosnitz (7.2–6.8 ka), and Rotmoos (6.3–5.0 ka) oscillations identified by pollen data (Zoller 1960; Patzelt and Bortenschlager 1973; Ivy-Ochs et al. 2009). The most recent cool-climate anomaly is the so-called Little Ice Age (LIA) between the Late Middle Ages and the mid-19th century (Grove 2004; Nussbaumer et al. 2011). The LIA can be subdivided into an early (AD 1260–1380), intermediate (AD 1380–1575), and main (AD 1575–1860) phase (Nicolussi et al. 2022). Shorter colder periods within the LIA are also known; for example, the Maunder Minimum of solar activity (AD 1645–1715; Eddy 1983).

A number of »warm« periods have also been identified; for example, the Holocene Climatic Optimum (HCO), a period of high insolation and generally warmer-than-present climate between 11 and 5 ka (Renssen et al. 2009; Solomina et al. 2015). Recent warmer periods are also the Minoan Warm Period with a peak around 3.3 ka, the Roman Warm Period around 2 ka, and the Medieval Warm Period about 1 ka (Easterbrook 2016). According to the Intergovernmental Panel on Climate Change (IPCC), we are currently experiencing the first human-induced global warming (IPCC 2018).

Following the Holocene subdivisions and periods, the Holocene has also been subject to short-term climatic changes, so-called »events«. The cooling 9.3 ka climatic event was probably caused by meltwater pulses to the Atlantic Ocean (Brynjólfsson et al. 2015). The 8.2 ka event briefly interrupted the trend of global warming with sudden strong cooling, attributed to the temporary weakening or disruption of the Gulf Stream caused by the spilling of huge amounts of melted ice into the North Atlantic (Thomas et al. 2007; Matero et al. 2017). The 4.2 ka event was characterised by dry and cool climatic conditions and has been accepted as the formal boundary of Northgrippian and Meghalayan, yet its exact origin remains controversial (Bini et al. 2019; Isola et al. 2019; Ran and Chen 2019). The latest 2.8 ka cold event is thought to have been driven by a grand solar minimum, with potential impacts on atmospheric dynamics and hydrology across the globe (Park et al. 2019; Harding et al. 2020).

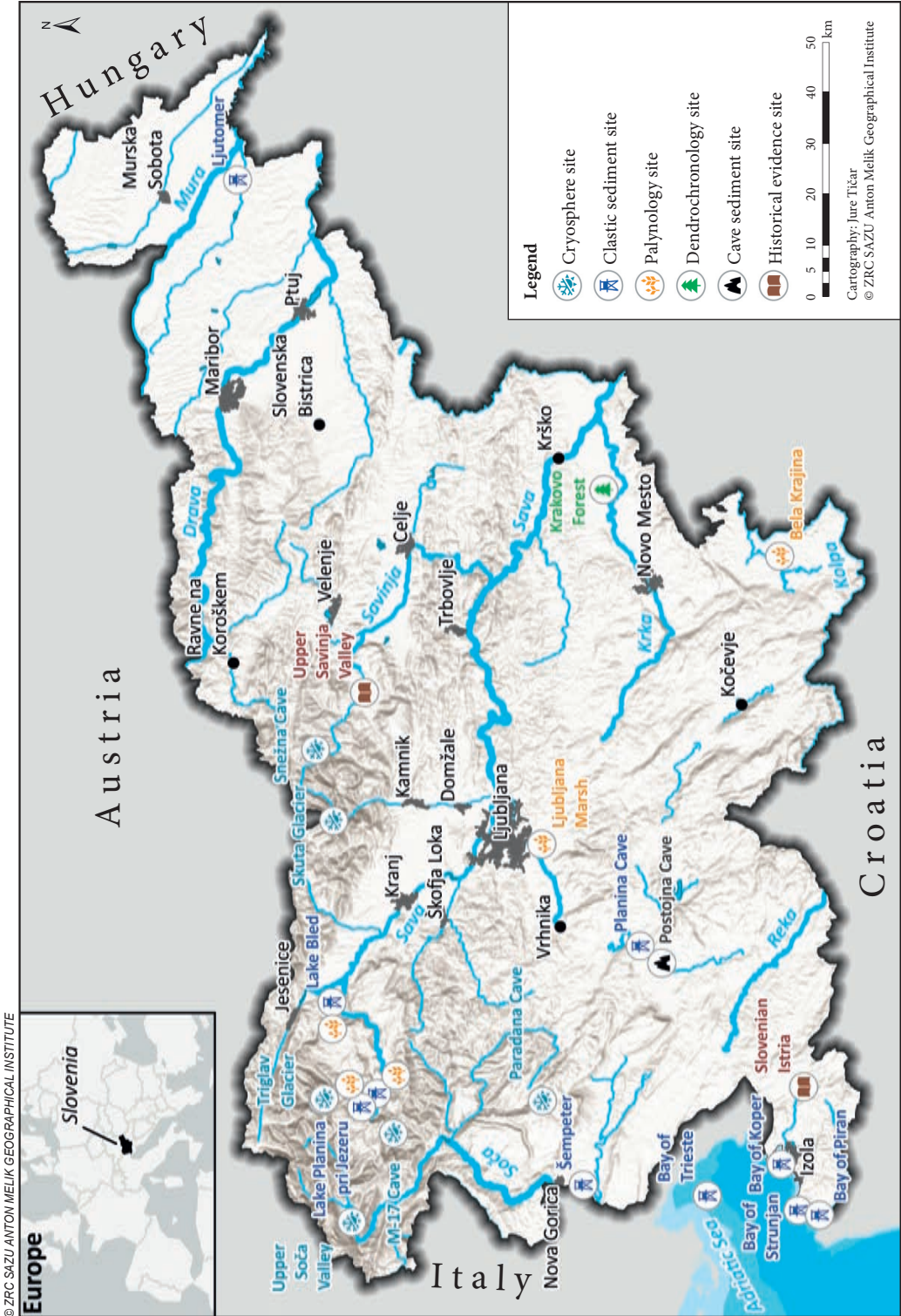
2 Records of the Holocene climate in Slovenia

Most palaeoclimate analyses rely on indirect methods based on analyses of a variety of media from geological, chemical, biological, and historical archives (Hardy 2003; IPCC 2007; Ruddiman 2014). The following subsections are divided based on the media or environments characterised by particular types of media relevant to the Slovenian territory.

2.1 Cryosphere

The cryosphere environment, including glaciers, ice sheets, sea and lake ice, and even seasonal snow cover, provides a number of possibilities to extract palaeoclimate data. Some of the most important ice cores on a global scale were drilled in the thick ice sheets of Antarctica and Greenland, where the

Figure 1: Relevant localities in Slovenia where palaeoclimate studies were done. ► p. 11



© ZRC SAZU ANTON MELIK GEOGRAPHICAL INSTITUTE

slow and continuous accumulation of ice over thousands or even millions of years provides an important interconnected palaeoclimate archive. The European Project for Ice Coring in Antarctica (EPICA), for example, has obtained a climate record for the past 740,000 years (Augustin et al. 2004), but stratigraphical sections spanning more than 2 Ma have also been found, and some are still being evaluated (Higgins et al. 2015; Kehrl et al. 2018). Reconstruction of the palaeoclimate can be based on the thickness of individual ice layers, seasonal stratigraphy and isotopic composition of ice, abundance and molecular composition of gas inclusions (CO_2 , CH_4 , and N_2O) and dust particles (Hammer 2006; Jansen et al. 2007; Lemieux-Dudon et al. 2010). For dating the uppermost layers of ice, counting annual layers is usually used, whilst for deeper (recrystallised) ice, radiometric dating of mineral and/or organic dust combined with geochemical markers and/or cosmogenic isotopes, firn densification modeling, and wiggle matching of ice core records to insolation time series are used (Lemieux-Dudon et al. 2010). Palaeoclimate modelling based on ice cores has also been done on ice cores retrieved from Alpine glaciers (e.g., Schwikowski et al. 1999), small glacierets (e.g., Grunewald and Scheithauer 2010), and ice accumulated in natural caves (e.g., May et al. 2011).

Climate change also directly affects the extent of ice sheets and glaciers. Indirectly, their occurrence in individual time periods can be inferred from the dating of moraines and formerly glaciated areas (Stroeven et al. 2006).

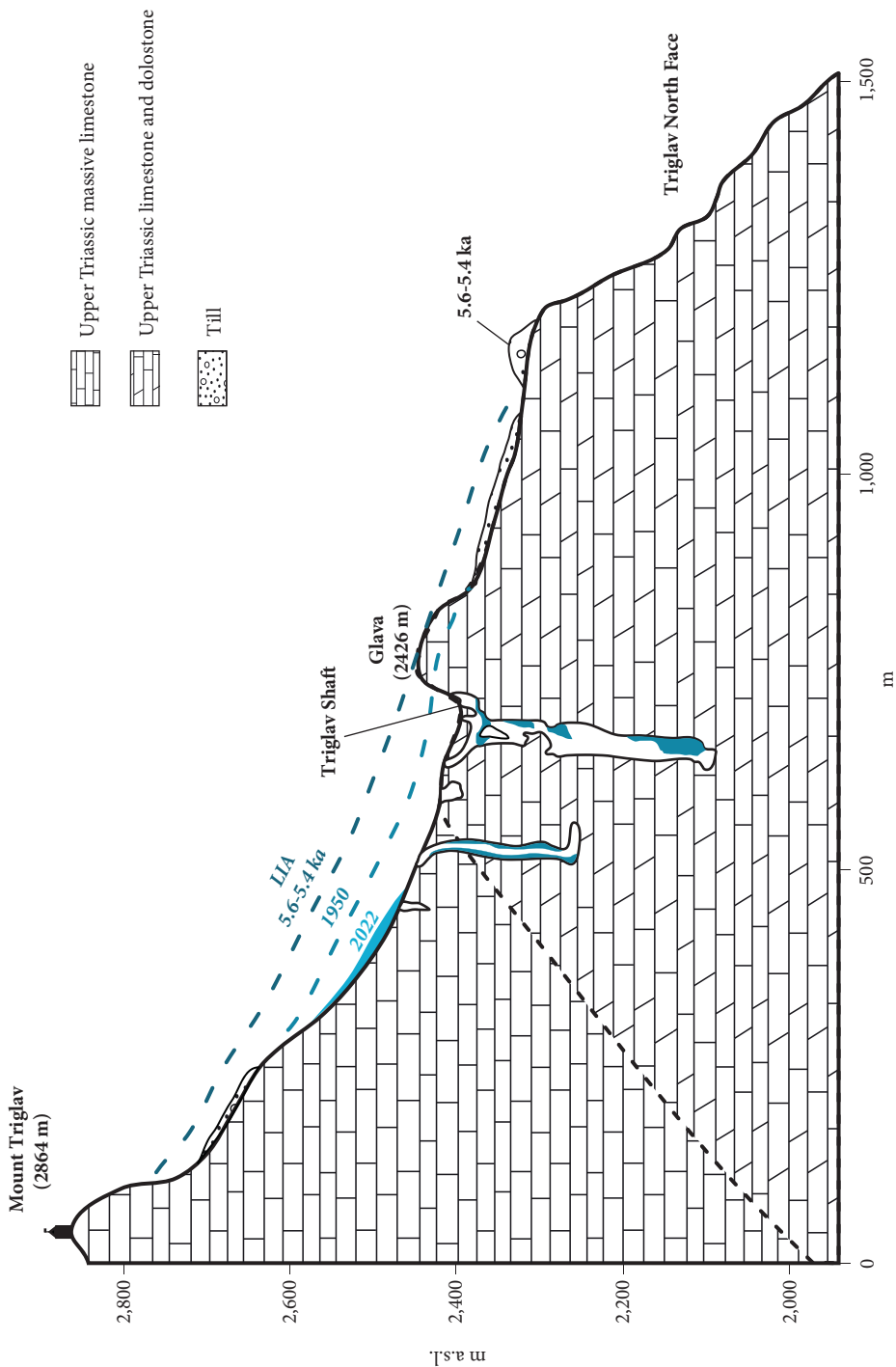
Whilst the Pleistocene glaciation played an important role in the transformation of the landscape in Slovenia (Gabrovec and Hrvatin 1998; Bavec and Verbič 2004; 2011; Ferik et al. 2015), only two remnants of glaciers persist in the present: the ice masses of the Triglav Glacier and the Skuta Glacier (Gabrovec et al. 2014; Zorn et al. 2020; 2020b; Figure 1). The Triglav Glacier is located below the peak of Mount Triglav (2,864 m) extending between 2,430 and 2,500 m in elevation and measuring around 0.7 hectares in size with a maximum thickness of around 5.5 m in 2002 (Gabrovec et al. 2013; 2014; Del Gobbo et al. 2016; Štok 2022). The Skuta Glacier is located below the peaks of Mount Skuta (2,532 m) and Mount Kranjska Rinka (2,453 m); it extends between 2,020 and 2,120 m in elevation and covers an area of about 1.5 hectares with a maximum thickness of around 7 m (Pavšek 2007; Triglav Čekada et al. 2020).

Ice core data were obtained from the remaining ice masses of the Triglav and Skuta glaciers in 2022 to provide information about the Holocene palaeoclimate, but the investigation is still ongoing. Systematic monitoring of the ice masses began shortly after the Second World War, and since the mid-1950s (Gabrovec et al. 2014) they have taken place together with systematic meteorological measurements on Mount Kredarica (2,515 m) next to the Triglav Glacier. Both data sets reflect the recent trend of climate warming (Hrvatin and Zorn 2020), but direct climate measurements are undeniably more reliable than modelling from proxies. Nevertheless, monitoring of ice masses provides valuable data on the interaction between climate and ice in recent (monitored) climate variabilities.

Archival imagery (Triglav Čekada, Zorn and Colucci 2014) of the Triglav Glacier shows its great extent and consequently indicate the presence of the LIA (i.e., colder climate conditions) in this area (Figure 2) at the end of the 19th century. Colucci and Žebre (2016) analysed the system of frontal moraine ridges of the Triglav Glacier identified by Šifrer (1963) and proposed that it was formed during the LIA; they consequently calculated the extent of the glacier to be about 44.2 hectares (compared to 0.7 hectares in 2022; Pavšek 2023) with a volume of 13.83 km^3 (compared to 2.455 m^3 ; i.e., $2.455 \times 10^{-9} \text{ km}^3$ in 2022; Pavšek 2023). The presence of the LIA glacier extent could be also expressed by the moraine ridges in the Upper Krnica Valley (Kozamernik et al. 2018), but this is also uncertain due to the absence of ages of moraine ridges. The radiocarbon (^{14}C) analysis of the organic material sourced from a non-vegetated moraine located approximately 500 m below the present-day ice mass of the Triglav Glacier (as observed in 2022) produced an age range of 5.6 to 5.4 ka, indicating the extent of the glacier at that time similar to the LIA period and possibly suggesting another period of apparent colder climate (unpublished research conducted by Karsten Grunewald and associates; Lipar et al. 2021).

Subglacial carbonate deposits collected downward from the current extent of the Triglav Glacier suggest the presence of ice mass in this area throughout the Holocene, but it is unclear whether the HCO was not so pronounced in this area that it would have caused melting of ice mass to the present extent, or whether there are other factors that were not present in the past that are accelerating melting (Lipar et al. 2021).

Figure 2: Vertical profile of the Triglav Glacier with approximate extent of the glacier around 5.6–5.4 ka, in the LIA, in 1950, and in 2022. ► p. 13



In addition to terrestrial ice masses, there are more than 260 caves in Slovenia with permanent ice masses (Cave Register 2022), which are also subject to ice mass loss as the overall climate warms (Kranjc 2009; Colucci et al. 2016; Mihevc 2021; Blatnik et al. 2023). The studies of their ice mass balance fluctuation and glaciochemistry have revealed their potential to provide palaeoenvironmental records (Mihevc 2018; Carey et al. 2019; 2020; Smith et al. 2023), but preindustrial data with dating is currently only available for the M-17 Cave located in the Tolmin Migovec massif of the Julian Alps (Racine et al. 2022). The ice mass balance of the M-17 Cave was assessed using radiocarbon dating of the organic remains embedded in ice. The developed chronostratigraphy suggests three primary phases of positive ice balance around 1.05–0.85 ka, 0.75–0.65 ka, and 0.25–0.15 ka, and a negative ice mass balance period around 0.65–0.55 ka (current ice mass loss has also been noted since its discovery in the 1980s). The overall positive ice mass balances are marked by cooler-than-average summers and wetter-than-average springs, whilst the negative mass balance indicates warmer-than-average summers and dry springs.

2.2 Clastic lacustrine and marine sediments

Marine, lake, and other continental sediments provide an important archive from which one can reconstruct past climate, biological, and geological changes and evaluate their impact on the environment. Sediment cores obtained from lake, marine, and continental un lithified sediments using a variety of coring methods (gravity and piston corers) provide a unique opportunity to obtain undisturbed successions, where all primary sedimentary structures, textures, and compositions are preserved down to the level of individual laminae. By analysing sediment cores, it is possible to observe both gradual and rapid changes in sediments, which are the result of various changes in catchments: geomorphology, physicochemical changes in water bodies, bioproduction etc. In the Holocene successions, the main driver for these changes is related to climate changes. Sediment structure and texture are used to reconstruct sedimentary processes and to identify »normal« pelagic sedimentation and event beds. Sediment mineral and chemical composition are used for provenance analyses, which in some cases have also been associated with climate changes (Bradley 1999; Last and Smol 2001; Battarbee et al. 2002a; 2002b; Lauterbach et al. 2011).

The most studied areas in Slovenia in relation to reliable ages of Holocene periods/events and palaeoclimatic interpretation are the Bay of Koper (Figure 1), where Holocene post-LGM warming marine transgression has been reconstructed, and lakes Bohinj and Bled, where the Holocene human and climate impacts on lake catchment have been investigated.

The Slovenian coastal area, located in the northernmost part of the Adriatic Sea, is the southeastern part of the larger Bay of Trieste. In this area, a complete series of shallow (up to 3 m) and deeper (up to 45 m) cores from different parts of the bay have been analysed (Ogrinc et al. 2012; Novak et al. 2020). These include three short cores in the northern and central part of the Bay of Trieste (Covelli et al. 2006; Ogrinc et al. 2007), three long cores in the Bay of Koper (Ogorelec et al. 1997), one long core in the southern part of the bay near Sečovelje (Ogorelec et al. 1981), and four short cores near the Bay of Strunjan (Novak et al. 2020). Based on lithology (mainly carbonate content), geochemistry ($\delta^{13}\text{C}$, $\delta^{15}\text{N}$, and OC/TN ratio), biota, and radiocarbon dating of sediments, the Holocene transgression in the Bay of Trieste was reconstructed (Ogorelec et al. 1981; 1997; Ogorelec, Mišič and Faganeli 2000; Covelli et al. 2006; Ogrinc et al. 2007; 2012; Mautner et al. 2018; Novak et al. 2020). The earliest evidence of the Holocene marine transgression is found in the cores from the Bay of Strunjan, dated to ~11.3 ka (Novak et al. 2020). Northward transgression progressed at a rate of between 1 and 3 km per century (Chiocci et al. 2017), and in a few hundred years most of the Bay of Trieste was already inundated by the advancing Adriatic Sea (Ogorelec et al. 1981; 1997; Ogorelec, Mišič and Faganeli 2000; Covelli et al. 2006; Ogrinc et al. 2007; 2012; Mautner et al. 2018; Novak et al. 2020). According to Ogrinc et al. (2012), this transgression pulse was followed by another pulse around 3 to 2 ka.

The oldest reliable climate reconstruction based on the lake core successions supported by dates is from Lake Bled, elevation 475 m (Andrič et al. 2009; Figure 1) and is based on geochemical parameters ($\delta^{18}\text{O}$, $\delta^{13}\text{C}$), pollen, and biota. The conclusion was that in the Oldest Dryas the larger area around the lake was influenced by a cold and dry climate, with a trend towards wetter conditions. A period of climate warming was observed at the beginning of the Late Glacial Interstadial at ca. 14.8 ka, followed by another period of warming at ca. 13.8 ka. After 12.8 ka (and throughout the Younger Dryas), the climate was colder and drier. A warmer climate marks the onset of the Late Glacial–Holocene transition.

In Lake Bohinj, elevation 526 m (Figures 1, 3), the sedimentary characteristics (provenance analysis) of the lake succession were used to reconstruct the Holocene wetter climate periods and associated increased flood activity (Andrič et al. 2020). These periods were marked by high terrigenous input at 6.1–6.0 ka, 5.7–5.55 ka, 5.0–4.6 ka, 3.9 ka, 3.7–3.55 ka, and 2.3–2.2 ka. These flood patterns match with periods of increased flooding in the wider Alpine region (Wirth et al. 2013), and the particular timing of 5.7–5.55 ka can also be correlated with the extreme floods in the Planina Cave based on the radiocarbon dating of a flowstone layer on the flood sediments (Stepišnik et al. 2012).

Small glacial Lake Planina pri Jezeru, located at an elevation of 1,430 m in the Eastern Julian Alps, has been the subject of ecological, geochemical, and palaeoenvironmental research in recent decades. Whilst geochemical studies have mainly focused on eutrophication (Muri et al. 2004; 2013; 2018; Muri, Wakeham and Rose 2006; Vreča and Muri 2006; 2010; Muri 2013) and its implications for the local ecosystems (Brancelj 2021 and references therein), the long-term changes in vegetation and sedimentary processes during the last 13,000 years were investigated using mineralogical, geochemical, and palynological methods by Caf et al. (2023). The radiocarbon method was used for dating the sediment core, and the climate change was reconstructed from sedimentological and vegetation parameters. Along with the pollen records (see Section 2.3), the warming at the beginning of the Holocene induced a transition from a wetland to a eutrophic lake surrounded by forest (*Picea*, *Larix*, *Ulmus*). Sedimentological characteristics and elemental records showed dry conditions after the Last Glacial Period with aeolian deposition of silty siliciclastic material. Between 12.45 and 12.2 ka, increased sedimentation of carbonate and decreased sedimentation of amorphous material suggests the onset of a more humid and warmer climate. Between 11.7 and 10.2 ka, rapid accumulation of amorphous organic material occurred as a result of increasing algal biomass in the lake, leading to anoxic conditions in the sediment and formation of pyrite (FeS_2). Between 10.2 and 4.5 ka, the area around the lake was heavily forested, as concluded from the high proportion of terrigenous detrital

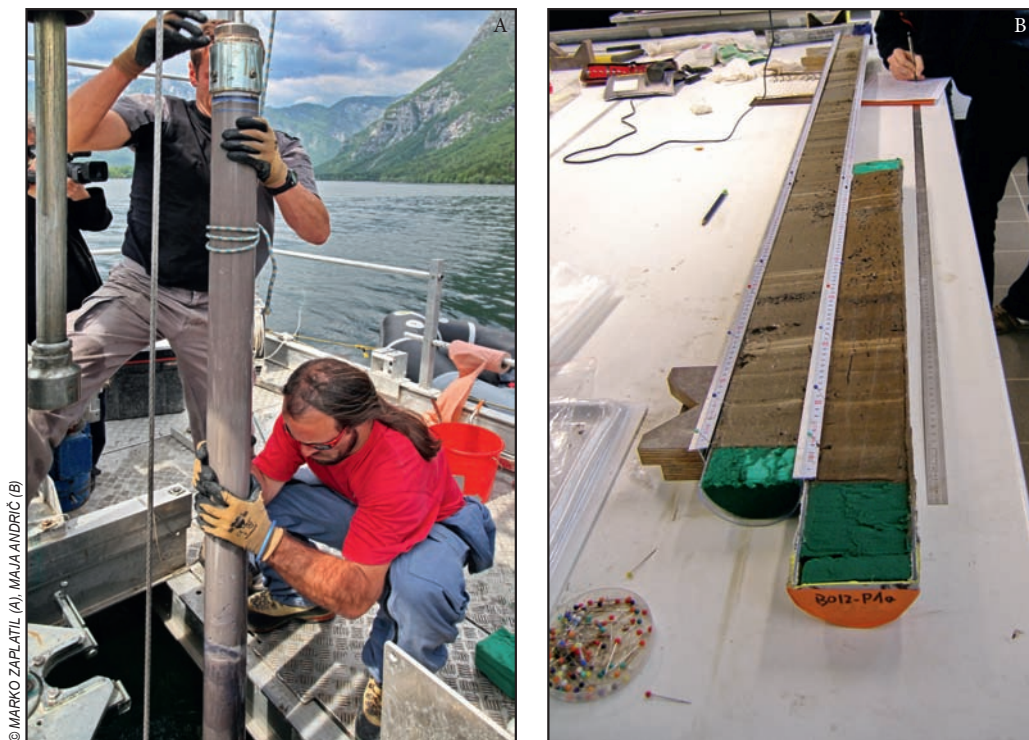


Figure 3: Sediment core from Lake Bohinj, published in Andrič et al. (2020). A: The length of the sediment core was 12 m. B: optically visible lamination of the core, indicating a change in lake hydrology as a consequence of climatic changes or events.

organic matter with a high OC/TN ratio in the sediment. Periodical pulses of increased input of detrital dolomite point toward several consecutive periods with increased precipitation, alternating with periods of droughts. The 8.2 ka event and the cooling at 5.3–4.9 ka which were recorded in the pollen profile (see Section 2.3), remained unnoticed in sedimentological and mineralogical records. The subsequent fluctuations of geochemical parameters are attributed to changing land use rather than climate change (e.g., metallurgy since Roman times, and migrations in the Late Antiquity and the Early Middle Ages), when the settlements were located at lower elevations, whilst the pastures above the lake were used only during the summer (Caf et al. 2023).

2.3 Palynology

Palynology is an established approach to the study of fossil pollen produced by former plants and deposited in lake/marsh sediments, where it can survive for thousands or even millions of years. By analysing pollen in sedimentary cores, long-term changes in vegetation can be reconstructed (Traverse 2007; Birks 2019; Chevalier et al. 2020). Plants respond to climate variability, internal vegetation dynamics (e.g., succession), and human impact on the environment. Since the vegetation has not been affected solely by climate fluctuations, pollen analyses cannot provide direct evidence of climate change. However, in combination with other palaeoclimate proxies (e.g., sedimentological, geochemical, and stable isotope characteristics of lake, ice, and marine cores, speleothems, and tree rings – see Sections 2.2, 2.4, 2.5), it is possible to better understand the impact of climate on the vegetation and reconstruct long-term climate variability.

Major climate variabilities triggered significant changes in Pleistocene and early Holocene vegetation, whereas it is often difficult to distinguish between anthropogenic and climate impacts in the middle/late Holocene because the human impact on the environment was more pronounced (Birks 1981; Bennett and Willis 2001). Also important was the resilience of vegetation, which did not respond to minor changes in temperature or precipitation. Compared to northwestern Europe, where many palaeoclimate studies have been conducted (e.g., Dansgaard et al. 1993; O'Brien et al. 1995; Bond et al. 1997; Dahl-Jensen et al. 1998; Mayewski et al. 2004; Wanner et al. 2011), in Slovenia the vegetation changes associated with the colder/wetter climate may have been less pronounced due to the warmer climate and proximity to glacial tree refugia (e.g., Willis, Rudner and Sümegei 2000; Petit et al. 2003; Willis and Vanandel 2004; Magri et al. 2006).

In Slovenia, palynological research in the 1960s focused on sediment cores from the Ljubljana Marsh, a tectonically active basin (Mencej 1990; Brenčič 2007; Bavec and Pohar 2009; Verbič and Horvat 2009), where Šerclj (1966) investigated pollen which had been deposited in colder and warmer periods of the Pleistocene and the Holocene. The results of palynological research on study sites in the Ljubljana Marsh (Šerclj 1966; Culiberg 1991; Andrič et al. 2008), Bela Krajina (Andrič 2011), the Julian Alps at Lake Bled (Andrič et al. 2009) and Lake Planina pri Jezeru (Caf et al. 2023; Figure 1) indicate that towards the end of the last Ice Age (Late Glacial ca. 15–11.7 ka), when the climate in Europe was cold and presumably dry (Peyron et al. 2005; Feurdean et al. 2008; Ivy-Ochs et al. 2008; Kerschner and Ivy-Ochs 2008), the landscape was covered by a steppe with few trees (e.g., *Pinus*, *Betula*, *Larix*, *Picea*), but during warmer periods, mesophilous deciduous trees (e.g., *Quercus*, *Tilia*, *Corylus*, *Ulmus*) spread. These climate variabilities and subsequent changes in vegetation are evident in sedimentary cores of Lake Bled (Andrič et al. 2009), where colder and drier conditions have been suggested on the basis of multi-proxy data (sediment $\delta^{18}\text{O}$, pollen, microcharcoal, and cladocera and chironomid fauna) for the Oldest Dryas (ca. 18.5–14.8 ka) and Younger Dryas (ca. 12.8–11.7 ka). Climate warming occurred during the Late Glacial Interstadial (ca. 14.8–12.8 ka) and at the beginning of the Holocene (after ca. 11.7 ka). Similar fluctuations of Late Glacial climate and vegetation have also been detected elsewhere (e.g., Vescovi et al. 2007; Feurdean et al. 2008 and references therein). During the Late Glacial Interstadial, for example, greater inter-seasonal variability and enhanced continental conditions (colder winters) compared to the present-day climate were detected in central and eastern Europe (Feurdean et al. 2014).

At the transition to the Holocene the climate became markedly warmer. The seasonality of the early Holocene was driven by high summer insolation and therefore increased summer temperatures and drier conditions, leading to an increase in wildfire activity at 40°–50° N (Kutzbach and Guetter 1986; Feurdean et al. 2014). Temperate deciduous forests (*Quercus*, *Ulmus*, *Tilia*, *Corylus*, *Fraxinus*) were widespread in all phytogeographic regions of Slovenia. The increased microcharcoal concentration found at several study sites can be linked to the increase in natural forest fires, although the possible influence of local hunter-gatherer populations cannot be completely excluded (Andrič and Willis 2003; Andrič 2007).

The late successional shade-tolerant taxa *Fagus* and *Abies* are thought to have spread throughout Europe later in the Holocene, when the climate became less seasonal (i.e., less continental) and colder/wetter due to changes in solar insolation (Tinner and Lotter 2006). Both taxa are sensitive to drought, late frosts, and frequent disturbance such as forest fires in the early Holocene (Ellenberg 1988), and in most regions of Slovenia both taxa did not spread until after ca. 8.9–8.8 ka (Andrič and Willis 2003; Andrič 2007). In the Julian Alps at Lake Planina pri Jezeru, the 8.2 ka event is expressed as a short cold period with decreased drought stress, which is reflected in the pollen profile of the lacustrine sediment as expansion of *Abies* and *Fagus*, outcompeting the *Corylus* sp. (Caf et al. 2023).

However, the differences in vegetation development between the different regions of Slovenia were significant. At the current level of research, it is difficult to estimate whether these differences were a result of different regional climates, human impact, bedrock, or a combination of all these factors. Therefore, independent palaeoclimate research is needed to better understand changes in vegetation and the environment.

In the Ljubljana Marsh, for example, *Fagus* spread very early in the Holocene (ca. 11.4 ka), whilst *Abies* spread only after ca. 9.2 ka (Andrič et al. 2008). At the same time, the proportion of planktonic diatom taxa increased, indicating a deeper lake, which may be associated with a colder/wetter climate (9.3 and 8.2 ka events; Meese et al. 1994; Alley and Ágústsdóttir 2005). Between 6.75 and 6.0 ka, *Abies*, *Fagus*, and planktonic diatom taxa declined, which can possibly be related to a drier climate (Andrič et al. 2008). Palaeoclimate studies using other proxies need to be conducted in Slovenia to confirm these assumptions; however, a similar decline in lake levels has been noted at other study sites in Switzerland, Germany, and Croatia (Haas et al. 1998; Kalis, Merkt and Wunderlich 2003; Balbo et al. 2006). The diatom and geochemical record of the central Austrian alpine lakes suggests climate warming between 7.3 and 6.0 ka (Schmidt et al. 2006). Furthermore, the $\delta^{18}\text{O}$ records at Lake Geneva (6.35–6.0 ka; Anadón et al. 2006) and at the Ernesto Cave (*Grotta di Ernesto*, 6.8–6.0 ka; McDermott et al. 1999) suggest a warmer and drier climate. Between 6.8 and 5.7 ka a major climate reversal has also been reconstructed in Scandinavia with more meridional flow patterns and anticyclonic summer conditions, and thus a drier climate and lower lake levels (pollen-based reconstructions of temperature and precipitation; Seppä and Birks 2001). Another change in vegetation in the Ljubljana Marsh occurred after 6.0 ka, when *Fagus* and later *Abies* began to increase again, and human impact on the vegetation (forest clearance and farming) was moderate. This change in forest composition can be associated with a cold and wet period (Haas et al. 1998; Mayewski et al. 2004), elevated lake levels (Magny 2004; Magny and Haas 2004), glacier advance after 5.8 ka (Denton and Karlén 1973; Seppä and Birks 2001), ice rafting (O'Brien et al. 1995; Bond et al. 1997), and peat formation between 5.1 and 4.4 ka (Seppä and Birks 2001). Late Holocene palaeoenvironmental changes in the Ljubljana Marsh are only partly investigated due to sedimentary hiatuses caused by water erosion (flood layers at 6–5 ka and at ca. 3.7 ka; Andrič 2020) and anthropogenic activities (peat cutting; Zorn and Šmid Hribar 2012). In the following millennia, human impact on the environment increased and »masked« potential palaeoclimate signals in the sense that it was more important for vegetation development than climate fluctuations.

In Bela Krajina, *Fagus* appeared later in comparison to the Ljubljana Marsh, (ca. 8.9 ka), *Abies* was less abundant, and human impact (forest clearing and burning, which significantly affected forest composition) was much stronger. Lower proportions of *Fagus* and *Abies* in Bela Krajina were possibly a consequence of a drier regional climate and the human impact of Neolithic farming communities (forest cutting and burning; Andrič 2007). The prevailing taxon after ca. 8.9 ka was *Fagus*. Here, an earlier decline and later recovery of *Fagus* (after ca. 7.5 and 5.7 ka, respectively) was observed compared to the Ljubljana Marsh, possibly due to a drier climate and greater human impact. *Abies* did not spread until after 4.5 ka BP (4.5–2.0 ka), and a landscape similar to that of the present day formed after 1 ka when human activities had completely overridden potential palaeoclimate signals.

In the late Holocene (after 4.5 ka), the global climate became wetter and presumably colder (Wanner et al. 2011). Due to minima in solar activity, lakes south of the Alps experienced high lake levels and higher flood frequency between 4.2 and 2.4 ka (Vannière et al. 2013; Wirth et al. 2013; Sabatier et al. 2017; Rapuc et al. 2019). Some of these floods were also detected in the Ljubljana Marsh (Andrič 2020) and at Lake Bohinj (Andrič et al. 2020). At Lake Bohinj, *Fagus*-dominated forests spread after 3.3 ka, presumably due to the wetter climate, whereas *Picea* and *Abies* started to decline, together with increasing Bronze Age human impact on the environment (grazing). A major soil erosion event in the Iron Age (2.6 ka) was triggered by human impact (forest cutting, metallurgical activities, and grazing; Andrič et al. 2020), but it cannot be ruled

out that it was further strengthened by the wet climate (ca. 2.8–2.3 ka; Haas et al. 1998; Bond et al. 2001; Magny 2004; Wanner et al. 2011; Magny et al. 2012; Rach et al. 2017).

In at least the last 1–2 ka, intensive human impact on the vegetation has been the most important factor shaping vegetation in all regions of Slovenia. Therefore, short-term (minor) fluctuations of the climate (e.g., the Medieval Warm Period and the LIA) are not clearly visible on pollen diagrams. Climate change was presumably not strong enough to cause significant changes in forest composition (at the lowland study sites), and human activities have altered forest composition more than climate. In addition, sampling resolution at many study sites was not detailed enough to detect these short-term changes; high-resolution studies at high-elevation sites at the tree line might yield better results.

2.4 Dendrochronology

Dendroclimatology, a subfield of dendrochronology, focuses on finding the relationship between climate and tree growth and on climate reconstruction, once the relationship between tree-ring proxy (a surrogate for measured climate data) and climate is established (Martinelli 2004; Ruddiman 2014). Classical dendroclimatology is based on establishing the relationship between tree-ring widths and climate; however, in recent times several other tree-ring proxies for climate reconstructions based on the wealth of information stored in tree-rings have been used. These new climate proxies include tree-ring density (maximum ring density), stable isotope ratios (carbon, oxygen, and hydrogen), and various anatomical traits of tree rings and blue intensity (a surrogate for X-ray-based tree-ring density measurements), to name a few (Siegwolf et al. 2021).

There are only a few long (ca. 2 ka) tree ring-based climate reconstructions in the world with some potential to go back to 6 ka (e.g., Wilson et al. 2011). However, there are several climate reconstructions of 1 ka or more based on tree-ring widths that cover the spatiotemporal variability of the climate in the last millennia (Cook et al. 1991; 1999; 2010; 2015; 2016). Europe is relatively well covered in terms of tree ring-based climate reconstruction, with the Alpine region best represented in this respect (Büntgen et al. 2006; Nicolussi et al. 2009; Corona et al. 2010; Hafner et al. 2014).

Currently in Slovenia, several tree-ring chronologies, which are an absolute basis for any climate reconstruction, have been developed: for the European larch (*Larix decidua* Mill.), a long-lived species at the upper tree line in the Alps; the pedunculate oak (*Quercus robur* L.), another long-lived species of the floodplain forests in the Slovenian lowlands (as well as in the Pannonian lowland); and the European beech (*Fagus sylvatica* L.), Norway spruce (*Picea abies* Karst.), and silver fir (*Abies alba* Mill.), which are representatives of the vast forests below the tree line in the Alps and Dinaric Alps.

Climate reconstructions in Slovenia have been done at the upper tree line using tree-ring proxies of European larch. The relationship between larch tree-ring widths and climate was studied at seven locations in the Slovenian Alps. Analysis was performed for the period from 1900 to 2008. The response function analysis showed a significant positive response (wide tree ring) of larch to above-average temperatures in June and a significant negative response to above-average temperatures in March. A long tree-ring width chronology (Levanič 2005) with later updates (unpublished) was developed, covering the period from AD 914 to the present. However, this chronology has a gap between 1254 and 1414, and therefore only the part from the end of this gap (1415) to the present was used to reconstruct June temperatures for the last 559 years. Another climate reconstruction is based on stable carbon isotope ratios in European larch (Hafner et al. 2014). A 520-year stable carbon isotope chronology was tested against measured temperature and sunshine duration data. The stable isotope chronology correlates well with both studied parameters; however, further tests showed that the relationship between sunshine duration and a stable carbon isotope ratio provides a more reliable reconstruction than average monthly temperature. Based on this, a 520-year reconstruction of sunshine duration for the period from June to August was developed for the southwestern European Alps, with three years standing out with particularly high predicted sunshine values (2006, 1911, and 1705) and two summers with particularly low predicted sunshine values (1840 and 1913).

In the mid elevations, silver fir-beech forest thrives in Slovenia. Elevations between 700 and 1,300 m are optimal for the growth and development of silver fir-beech forest. In the context of the wider study, the climate growth relationship was analysed along a 1,000 km transect (Čater and Levanič 2019). For sites in Slovenia and neighbouring Croatia, it was confirmed that temperature in June (beech) and July (silver

fir) plays an important and positive role in the growth of beech and silver fir, but no further attempts have been made towards climate reconstruction.

At least two long chronologies with tree-ring widths and thus climatic reconstructions have been developed for low elevations in Slovenia. The first, a 349-year reconstruction, is based on the compilation of oak wood samples collected from old houses in the Dolenjska region and samples from old-growth forest in the Krakovo Forest (Sršen 2019; Figure 1). Oak chronology was tested against several climate variables and various drought indices, and it provided statistically sound results. Based on the 349-year chronology, drought reconstruction (the Palmer Drought Severity Index, PDSI) was compiled for the region of Dolenjska. A similar reconstruction for the same region and slightly longer (506 years) was constructed for the De Martonne Aridity Index (AI; Čufar et al. 2008). This reconstruction identified both above-average June precipitation and temperature as the most critical month for pedunculate oak growth in the region.

Based on dendrochronological analyses, for example, precipitation and temperature conditions in June were reconstructed for the last half millennium for southeastern Slovenia (Čufar et al. 2008). The average temperature of a very dry June was around 20°C, with average monthly rainfall around 40 mm, and the average temperature of a very wet June was around 16°C, with average monthly rainfall around 240 mm (Zwitter 2012). Dendrochronological analyses in the Slovenian Alps show two colder summer periods, around 1770 and 1820 (Levanič 2005; Zwitter 2012).

2.5 Speleothems and other cave sediments

Caves are a characteristic feature of karst landscapes and as such act as traps for clastic, chemical, and organic sediments in the local environment (e.g., Osolo 1968; Gospodarič 1988). Clastic sediments are generally allogenic and originate from the catchment, and therefore their facies reflect the water flow regime in both the cave and the catchment (Zupan Hajna et al. 2008a; 2008b; 2021; Stepišnik et al. 2012; Ferik 2016; Ferik et al. 2019). The most common authigenic chemical cave sediments generally consist of calcite, aragonite, and other carbonate precipitates in the form of speleothems or tufa. Because of the relatively stable climate conditions in caves, their growth rate and continuity are particularly important indicators for reconstructing past climate variabilities, along with their chemical and isotopic records (Ford and Williams 2007; Fairchild and Baker 2012).

Despite the abundance of karst caves in Slovenia – the national database of caves (Cave Register, Speleological Association of Slovenia) currently has 14,695 recorded – only one analysed speleothem from Slovenia is listed in the SISAL (Speleothem Isotope Synthesis and Analysis) database of speleothems with published records (Genty et al. 1998; Comas-Bru et al. 2020).

The first discrete isotope data on speleothems in several Slovenian caves (Škocjan Caves, Dimnica Cave, Divača Cave, Predjama Cave, Mačkovica Cave, and Kamnik Cave) were reported by Urbanc et al. (1985; 1987). In a stalagmite record from the Postojna Cave (Figure 1), the uppermost segment encompassing the period from about 1950 to 1995 was analysed for ^{14}C history and growth rate, which was 0.13 to 0.20 mm/a for the samples analysed (Genty et al. 1998; Vokal 1999; Genty, Baker and Vokal 2001). To establish the relationship between the stalagmite $\delta^{18}\text{O}$ and $\delta^{13}\text{C}$ values and the environmental parameters, local precipitation and drip water were analysed from 1996 to 1997; however, the sampled drip water was not associated with the stalagmite, so no direct correlation could be established (Vokal 1999; Mandić et al. 2013). The hydrogeological stable isotope study and ^{14}C modelling provided important information on the C turnover rate in soils and the mean travel time of drip water feeding the speleothem (~11 years; Vokal 1999; Mandić et al. 2013), but the carbonate precipitation appeared to be in isotopic disequilibrium, making it unsuitable for palaeoclimate interpretation. Horvatinčić, Krajcar Bronić and Obelić (2003) also analysed the C and O isotope compositions in two ^{14}C -dated stalagmites from the Postojna Cave, one recent and one roughly encompassing the last 14 ka. The fluctuations in $\delta^{13}\text{C}$ values were attributed to the changing vegetation cover over the cave. The $\delta^{18}\text{O}$ record did not reveal any anomalies that would indicate a significant change in ambient temperature; however, the temporal resolution of the isotope profile was too low to allow any plausible conclusions about the palaeoclimate.

Black layers in speleothems in the Postojna Cave were studied by Šebela et al. (2015; 2017). Remains of charred carbon were found in dripstone in the Pisani Rov passage (8.24 ka), and in the Črna Jama Cave (8.39 ka), whilst the charcoal from soil above the cave at a depth of 1 m was dated to 8.21 ka (using the ^{14}C method). These are the first findings from caves in Slovenia related to the 8.2 ka event, and they also explain

the mechanism of transport of soot formed by forest fires into the cave by winter ventilation, where it was deposited as black aerosol deposits over older speleothems. Most probably, the recorded forest fire was a natural, lightning-caused fire, although an anthropogenic origin cannot be ruled out (Šebela et al. 2015).

A palaeoclimate study has been in progress since 2009 in the Postojna Cave, in the terminal Pisani Rov passage (Domínguez-Villar et al. 2015; 2018; Lipar, Drysdale and Zhao 2019), but to date no detailed palaeoclimate interpretation of the stalagmite $\delta^{18}\text{O}$ and geochemical profile has been retrieved. Only preliminary studies based on hydrochemical and isotopic analyses of drip water, stalagmite, and precipitation have been performed (Vreča et al. 2006; Vreča, Pavšek and Kocman 2022) and confirmed that (1) the cave temperature at the end of the passage at a depth of about 37 m reflects the temperature fluctuations at the surface related to global warming with a delay of 20 to 25 years; however, because of the transfer of surface atmosphere, thermal variability depends on the duration of the oscillations, so the thermal anomalies with periods of 7 to 15 years in duration have delay times < 10 years in the passage studied (Domínguez-Villar et al. 2015); (2) at the time of collection (2009), the stalagmite was in a state of dissolution and was not growing; (3) the upper 0.6 mm of the stalagmite grew from 1984 to 2003; and (4) the $\delta^{18}\text{O}$ values of speleothem in that segment are synchronous with fluctuations of averaged $\delta^{18}\text{O}$ values of drip water and local precipitation during the same period (Domínguez-Villar et al. 2018).

2.6 Borehole temperature profiles

Studies of temperatures measured in boreholes can be used to reconstruct surface temperature. Due to the relatively low thermal diffusivity of rocks, temperature change at the surface propagates downwards and the way temperature changes along a borehole at the present time can indicate how the surface temperature has changed in the past (Cermak 1971; Bodri and Cermak 2007).

In Slovenia, temperature profiles from boreholes come mostly from the northeastern part of the country and span generally up to 300 years (Rajver, Šafanda and Shen 1998). Information about temperature changes beyond the past centuries are available from the Ljutomer borehole (drilled to a depth of 4,048 m and logged to almost 2,000 m) and the Šempeter borehole (drilled to 1,541 m and logged to 1,518 m), allowing reconstruction spanning the Holocene and the last glacial period (Rajver, Šafanda and Shen 1998; Šafanda and Rajver 2001). It shows the warming occurring after the last glacial period around 10 to 15 ka and reaching a maximum around 3 to 2 ka. The maximum could be related to the HCO-11 and 5 ka based on Renssen et al. (2009) and Solomina et al. (2015) since the amplitude and timing of the borehole values are qualitative because of the diffusive nature of heat conduction and the assumptions about the parameters used in inversion routines that blur temperature changes in the distant past (Luterbacher et al. 2012).

The shallower boreholes show a cold period around 1870–1890 (possibly related to the LIA), followed by a warming trend in the past 100 years. It is estimated that the ground surface temperature rose by 2° in the last 150 years (Rajver, Šafanda and Shen 1998; Šafanda et al. 2007).

2.7 Historical sources

Written records of climate phenomena began with the advent of developed civilizations (Zorn and Komac 2007). Some of the observations were made individually or passed down through generations. Common observations included droughts and floods, freezing of water, and vegetation cycles. They were carefully recorded, especially in terms of their effects on society. Historical sources from before advances in weather instruments can therefore be considered only as secondary information regarding climate changes in recent centuries. Well-known examples of historical sources include El Niño and written evidence of rain-fall and weather-related disasters in China, etc. (Carey 2012; Ruddiman 2014).

Studies dealing with climate in Slovenia in the pre-instrumental period are rare (Ogrin 2012), but for the 17th and 18th centuries they show that springs and summers with heavy rain were common between 1700 and 1720, and summers were warm in the mid-18th century. Winters were harsh between 1630 and 1650 and during the Maunder Minimum, 1680–1716. Sources suggest that the 17th century was »a rather varied period in terms of climate and weather« (Ogrin 2012, 96). In the first half of the 17th century and the first half of the 18th century, weather-related natural disasters were frequent, with their frequency comparable to that of the late 20th century (Ogrin 2007b).

Slovenian historiography for the early Middle Ages, more precisely until AD 536, reports a severe famine that also affected the areas of present-day western Slovenia (Bratož 2019). Summer temperatures in Europe in AD 536 decreased by 1.6 to 2.5°C compared to the previous 30-year average due to a volcanic eruption in Iceland (Sigl et al. 2015; Gibbons 2018). Similarly, the eruption of the Mount Tambora volcano in Indonesia in April 1815 led to a drop in temperature of approximately 1.5°C in 1816 in what is now Slovenia, and this was accompanied by above-average rainfall (Čeč 2017); the estimated average surface temperature anomalies of the northern hemisphere in the summers of 1816, 1817, and 1818 are -0.51, -0.44, and -0.29 K (Oppenheimer 2003). The year 1816 is also known as the »year without a summer« (Oppenheimer 2003), and the year 1817 as the »year of famine«. It was the 1816–1818 famine that contributed to the development of a new cultivar – the potato – in certain areas of present-day Slovenia (Čeč 2015; Studen 2018).

More detailed historical studies of sources for weather and climate for the territory of present-day Slovenia are still lacking for the Middle Ages. These studies are more common for sources from the 16th century onward. For the beginning of the 17th century, the weather data collated by the bishop of Ljubljana and several annals have been preserved (Zwitter 2013). From these data, it is known that precipitation around the new year in central Slovenia was not only from snowfall and that the rise of temperatures above freezing was not uncommon. Sources for this period also confirm the occasional occurrence of very cold and wet summers in a single year or several years in a row (Zwitter 2013).

The climate conditions in the second half of the 17th century and at the beginning of the 18th century (i.e., for the Maunder Minimum, when solar activity was at its lowest) can be inferred for Slovenian Istria or the coastal/southwestern part of Slovenia from sources on salt production. During this period, severe storms with hail and strong winds were statistically more frequent than in earlier or later periods (Paliska et al. 2015). Between the first half of the 17th century and the first half of the 18th century, salt production was at its lowest in the mid-17th century (Bonin 2001).

An important climate indicator is frost damage to olive trees because olive trees in southwestern Slovenia grow at their northern climate limit. In the 20th century, the average recurrent period of frosts in the olive groves was 20 years, whilst in the 18th century it was shorter (10–15 years; Ogrin 2007a). For southwestern Slovenia, the occurrence of droughts was also reconstructed using historical sources. These were more common between 1540 and 1562, in the first half of the 18th century, and between 1820 and 1848. The droughts in the first half of the 18th century sometimes coincided with plagues of locusts (Ogrin 2003).

Historical sources for the LIA in southwestern Slovenia indicate two periods with a higher frequency of colder winters: (1) between 1300 and 1570 with peaks between 1400 and 1450, and between 1475 and 1570, and (2) between 1680 and 1865 with a peak in the first half of the 18th century (Ogrin 2005). Colder winters were also present between AD 800 and 865. Winter temperatures were 0.8°C lower at the end of the 15th century, and about 0.5°C lower in the first half of the 18th century than average temperatures at the end of the 20th century (Ogrin 1994).

The LIA is characterised by localized accusations of bad weather magic among the population. Witchcraft processes in Slovenia reached a high point during the second peak of the LIA at the end of the 17th and beginning of the 18th century (Rajšp 1988; Zwitter 2012).

For northern Slovenia, more precisely in the Upper Savinja Valley, it is known from historical sources that several consecutive cold and rainy summers led to the short-term abandonment of some high-elevation farms in the last decade of the 17th century (Zwitter 2012). The highest located farms in the Slovenian Alps were probably established towards the end of the Medieval Warm Period (i.e., during the time of secondary, high-elevation settlement), many of which were later abandoned (Ogrin 2012).

Data on weather and climate conditions for the 16th and 17th centuries can be found in the *urbarium* (or rent roll). Temperature and precipitation data are less frequently documented, but there are more data on harvests of various crops and meadows, and on the impact of weather on agricultural activities (Zwitter 2016). Based on court records from the first half of the 17th century, in the case of mountain grazing there was an awareness that in the second half of August the weather could already be cold, which influenced the earlier movement of livestock from higher to lower mountain pastures. This historical fact was still present in historical records in the mid-20th century, when August 10th was considered the last day of summer or the first day of autumn in many parts of Slovenia (Zwitter 2020). Poorer weather conditions may also have led to the introduction of new crops – in the mid-19th century, due to poor cereal harvests, the production of table potatoes became a necessity (Gestrin 1969; Zwitter 2012), along with a change in harvest time (Zwitter 2015).

The Glory of the Duchy of Carniola (Valvasor 1689) also provides weather and climate data for the 17th century, but care must be taken, as some of the statements may be exaggerated to a certain extent. Among other things, it is learned that high mountains could be covered with snow periodically, which means that the highest parts of the high mountains were not covered with permanent snow and ice during this period of the LIA, even though summers were on average colder than today (Zwitter 2014).

The harsh winters can be inferred from the ice on rivers, which the resulting floods were associated with during the melting period. In the 18th and 19th centuries, there were severe winters in northeastern Slovenia (Ptuj) in the first decade of the 18th century and in the second half of that century, as well as in the first half and at the end of the 19th century (Kolar 2020).

3 Synthesis

The reconstruction of the Slovenian climate during the Holocene is still evolving, and it would be too speculative to present an overall timeline synthesis. In addition, Slovenia is climatically diverse, and the palaeoclimate cannot simply be inserted into an overall history but should be treated on a regional scale. Nevertheless, several valuable studies have already shown peculiar periods when climate variations most likely played a major role to which the environment responded, either in terms of changes of glacier extent, lake level and flood frequency, or the spread or growth discontinuity of particular plant species, or simply through a historical remark in written records.

In terms of the regional distribution of palaeoclimatic archives studied throughout Slovenia (Figure 4), the eastern and northeastern regions characterised by the most apparent continental climate have palaeoclimatic research based on historical sources such as winter weather events in the Ptuj area in the 18th to 20th century (Kolar 2020) and borehole temperature profiles (Rajver, Šafanda and Shen 1998; Šafanda and Rajver 2001). The studied regions with a temperate continental climate are southeastern and central Slovenia, which include palynological (Culiberg 1991; Andrič 2007; 2020; Andrič et al. 2008), dendrochronological (Čufar et al. 2008; Sršen 2019), borehole temperature (Šafanda et al. 2007), and hydrological studies (Andrič et al. 2008; Stepišnik et al. 2012). Mountain climates are well represented by cryosphere archives (Gabrovec et al. 2014; Colucci and Žebre 2016; Lipar et al. 2021; Racine et al. 2022), palynological and sedimentological studies (Andrič et al. 2009; 2020; Caf et al. 2023), dendrochronological research (Hafner et al. 2014), and historical sources (Zwitter 2015; 2020). Studies in regions with a sub-Mediterranean climate mostly focus on marine sediments and transgression (Ogrinc et al. 2012; Novak et al. 2020).

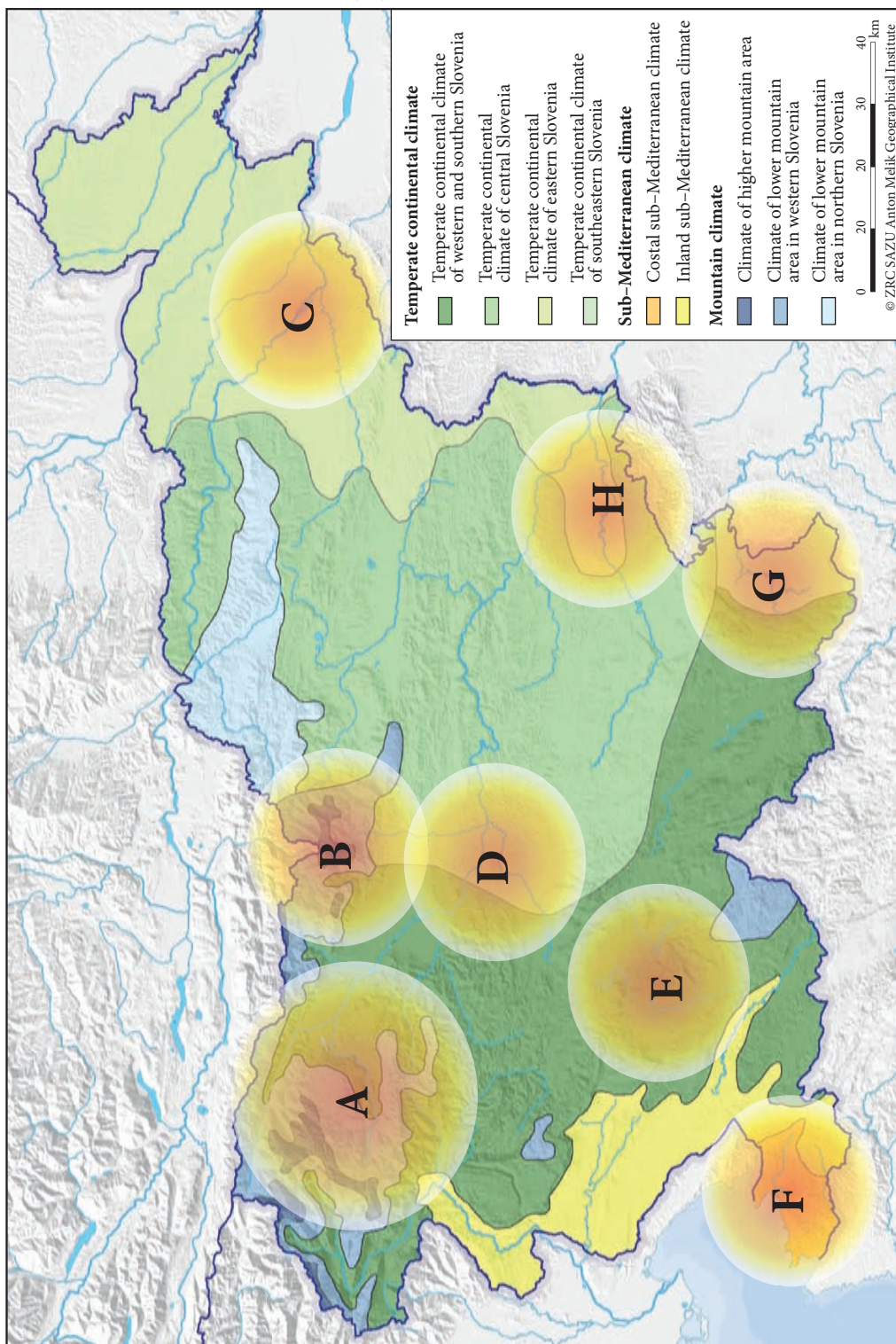
As for the period from the beginning of the Holocene to the times of modern climate monitoring, the palaeoclimate data based on archives from the Slovenian territory exist for all three subdivisions – oldest to newest, these are Greenlandian, Northgrippian and Meghalayan. The palaeoclimate from Slovenian archives of each of these subdivisions is summarised, along with the major global climatic periods/events. The summary of events is shown in Figure 5.

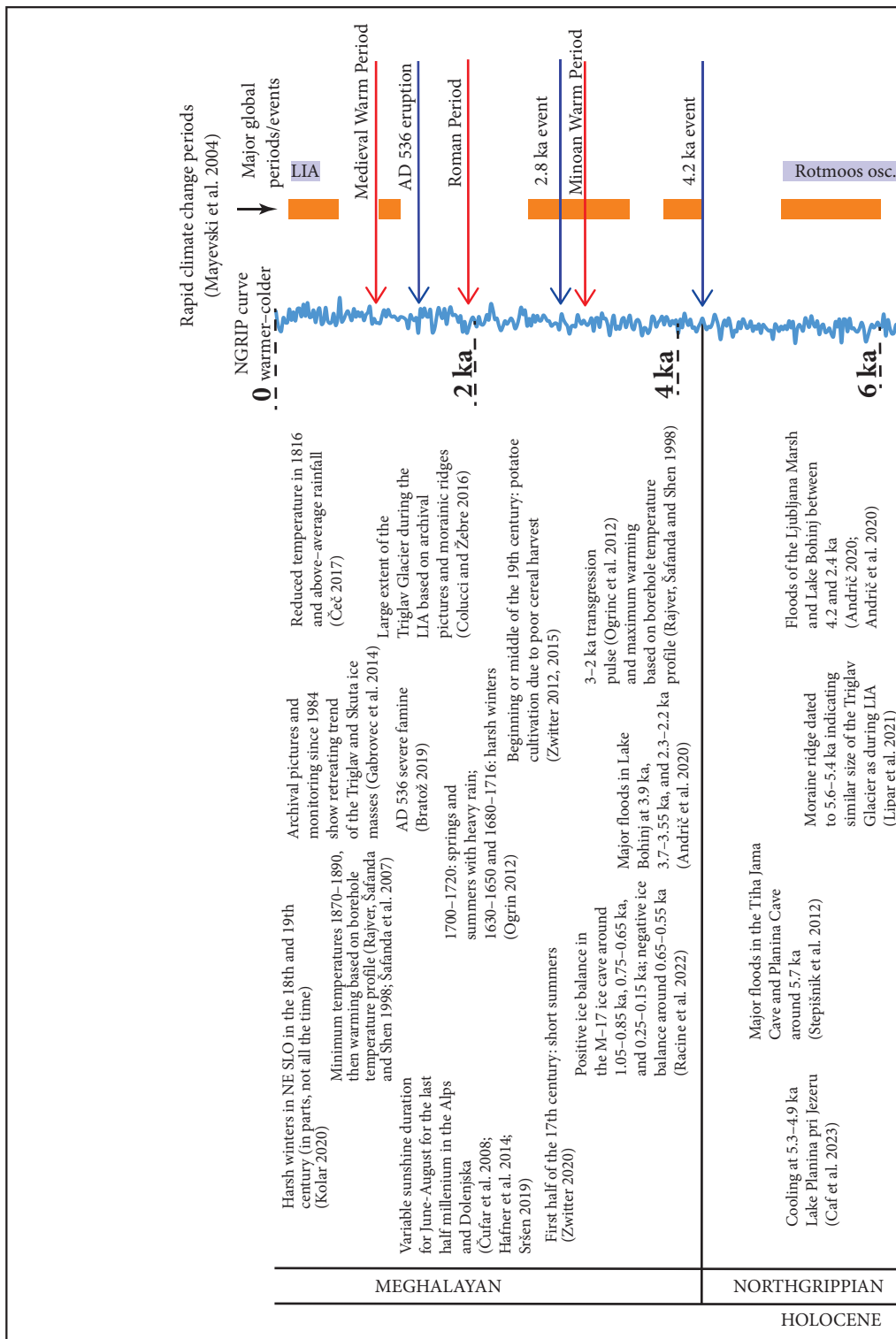
3.1 Greenlandian (11.65–8.186 ka)

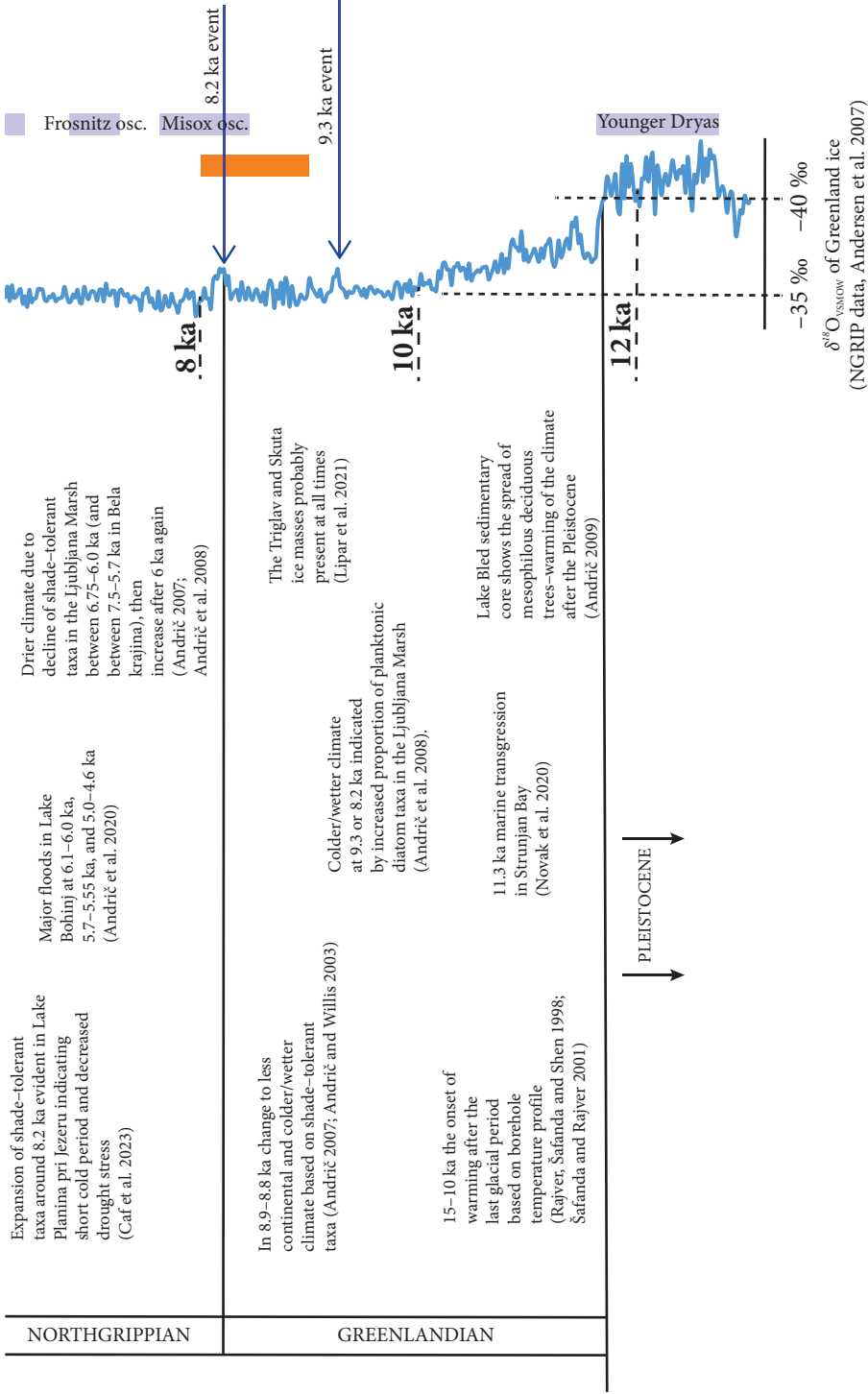
The onset of the Holocene and the associated warmer climate on a global scale compared to the last glaciation period at the end of the Pleistocene also led to the retreat of major glaciers in Slovenia (Bavec and

Figure 4: The present climate of Slovenia (Ogrin 2008) and the broad localities of major palaeoclimatic research. A: The Triglav Glacier (Gabrovec et al. 2014; Colucci and Žebre 2016; Hrvatin and Zorn 2020; Lipar et al. 2021), Lake Bohinj (Andrič et al. 2020), Lake Bled (Andrič et al. 2009), Lake Planina pri Jezeru (Caf et al. 2023), Vršič Pass (Hafner et al. 2014), the M-17 Ice Cave (Racine et al. 2022). B: The Skuta Glacier (Pavšek 2007; Triglav Čekada et al. 2020), the Dleskovec Plateau (Hafner et al. 2014), and the northeastern Slovenian Alps in general (Zwitter 2015; 2020). C: Ptuj (Kolar 2020) and the rest of northeastern Slovenia (e.g., Ljutomer; Rajver, Šafanda and Shen 1998; Šafanda and Rajver 2001). D: The Ljubljana Marsh (Culiberg 1991; Andrič et al. 2008; Andrič 2020). E: The Planina Cave (Stepišnik et al. 2012) and the Postojna Cave System (Dominguez-Villar et al. 2015; Šebela et al. 2017; Dominguez-Villar et al. 2018; Lipar, Drysdale and Zhao 2019). F: Strunjan Bay (Ogrinc et al. 2012; Novak et al. 2020). G: Bela Krajina region (Andrič 2007; 2011). H: Krakovo Forest (Sršen 2019), the wider region between Novo Mesto and Krško (Šafanda et al. 2007), and southeastern Slovenia (Čufar et al. 2008). ► p. 23

Figure 5: A summary of apparent palaeoclimatic data from the Slovenian territory, accompanied by the NGRIP curve (Andersen et al. 2007) and major climatic events (red arrows for major global periods/events – warm events; blue arrows for major global periods/events – cold events). © ZRC SAZU Anton Melik Geographical Institute ► p. 24–25







Verbič 2011), although some ice masses (e.g., the Triglav and Skuta glaciers) were still present (Lipar et al. 2021). The borehole temperature profile from Ljutomer also clearly shows a warming trend at the end of the last glacial period and the beginning of the Greenlandian. The earliest evidence of marine transgression, dated to 11.3 ka, comes from Strunjan Bay (Novak et al. 2020), and the onset of a warmer – and also more humid climate compared to the late Pleistocene is also supported by increased sedimentation of carbonate and decreased sedimentation of amorphous material in Lake Planina pri Jezeru (Caf et al. 2023) and the spread of mesophilous deciduous trees evident in the sediment core of Lake Bled (Andrič et al. 2009).

The high insolation at the beginning of the Greenlandian also aided seasonality with drier conditions and higher temperatures in summer, possibly reflected in increased microcharcoal concentrations (Andrič and Willis 2003; Andrič 2007). Toward the end of Greenlandian, the shade-tolerant taxa, which generally spread after ca. 8.9–8.8 ka (Andrič and Willis 2003; Tinner and Lotter 2006; Andrič 2007), may indicate a decline in solar insolation and consequently a less seasonal and colder/wetter climate. Notable regional differences (e.g., the spread of shade-tolerant taxa earlier in the Ljubljana Marsh than in Bela krajina) allow rare opportunities to compare the palaeoclimate on a regional scale and could indicate a drier regional climate in the temperate continental climate of southeastern Slovenia, compared to the temperate continental climate in central Slovenia.

The end of the Greenlandian and the beginning of Northgrippian are marked by the 8.2 ka event, and the very prominent expansion of shade-tolerant taxa in the Lake Planina pri Jezeru core (Caf et al. 2023) could be associated with this event, which can be characterised as a short cold period with lower drought stress. The increased proportion of planktonic diatom taxa, indicating a deeper lake possibly associated with a colder/wetter climate, was also observed in the Ljubljana Marsh (Andrič et al. 2008), although this may also be associated with the 9.3 ka event.

On the contrary, the extensive black-layered speleothems in the Črna Jama Cave are thought to be the result of massive forest fires around 8.2 ka (Šebela et al. 2017), which could indicate a drier climate at that time. This could indicate either minor regional palaeoclimatic differences in Slovenia, similar to the wider European region where this event was characterised by wet conditions in some parts and dry conditions in others (Gałka et al. 2016 and references therein), or an unclear sequence of relatively rapidly changing climatic events; for example, higher-than-average air temperatures before and after 8.2 ka in Europe (Gałka et al. 2016; Andersen et al. 2017) could also contribute to more frequent forest fires.

3.2 Northgrippian (8.186–4.2 ka)

The first apparent palaeoclimatic change after the 8.2 ka event is evident in the decline of shade-tolerant taxa recorded in the Ljubljana Marsh between 6.75 and 6.0 ka, which may be related to a drier climate; after 6 ka, the shade-tolerant taxa increased again, possibly indicating a cold and wet period (Andrič et al. 2008). In Bela Krajina, a decline in shade-tolerant taxa was recorded over a longer time interval, between 7.5 and 5.7 ka (Andrič 2007), possibly indicating a drier climate in southeastern Slovenia compared to central Slovenia, but a stronger human influence cannot be excluded. These longer periods of drier climate coexist with the HCO, which, in fact, spans from 11 to 5 ka, but, due to the variation of climatic events on a shorter timescale, the HCO period seems to be very generalised. Furthermore, temperature data from the boreholes, reaching a maximum between 3 to 2 ka, have also been considered related to the HCO (Rajver, Šafanda and Shen 1998), but the estimates of the ages do not overlap.

Nevertheless, the enhanced flood activity at 6.1–6.0 ka, 5.7–5.55 ka, and 5.0–4.6 ka indicated by terrigenous input to Lake Bohinj (Andrič et al. 2020) may be the result of decreasing insolation and the end of the HCO at around 6 ka. This could furthermore be strengthened by the advances of the Triglav Glacier (5.6–5.4 ka; Lipar et al. 2021), possibly related to the two-phased Rotmoos Oscillation between around 6.3 and 5.0 ka, when advances of small glaciers were reported in the Alps (Patzelt and Bortenschlager 1973; Ivy-Ochs et al. 2009). Cooling was also noted at 5.3 to 4.9 ka in pollen records of the Lake Planina pri Jezeru (Caf et al. 2023).

3.3 Meghalayan (4.2 ka–present)

The Meghalayan begins with the 4.2 ka event, which is almost coincident in most of the archives discussed (Sevink et al. 2011; Wanner et al. 2011), but it has not been clearly detected in proxies from the Slovenian region. Detected flooding in the Ljubljana Marsh (Andrič 2020) and Lake Bohinj (Andrič et al. 2020) may

indicate a wetter and presumably colder climate in the early Meghalayan due to minima of solar activity. At Lake Bohinj, the spread of *Fagus* after 3.3 ka also suggests a wetter climate, and increased flood activity was recorded at 3.9, 3.7–3.55, and 2.3–2.2 ka, whilst a major soil erosion event between 2.8–2.3 ka could also be related to human impact (otherwise also a wetter climate; Andrič et al. 2020).

The apparent cooling was detected during the LIA, as indicated by morainic ridges of the Triglav Glacier (Colucci and Žebre 2016). It is also possible that the very low salt production on the Slovenian coast and particularly the witchcraft trials at the end of the 17th and beginning of the 18th centuries indicate the climate of the LIA. Dendrochronological data show the variability of summer insolation in the eastern Alps during the LIA until today (Hafner et al. 2014); they show that summer insolation was variable with particularly hot summers around 1705. Based on dendrochronological data from Dolenjska region, no extreme summers (featuring either extreme dryness or wetness) were observed (Sršen 2019), but relatively wet summers were observed in the early 18th century and similarly after 1797. Summers became slightly less wet in the last decade of the 18th century. Based on historical imagery since the end of the 19th century, the melting of the two remaining ice masses in Slovenia, the Triglav and Skuta glaciers, and borehole temperature profiles indicate the onset of a warmer period after the LIA (Rajver, Šafanda and Shen 1998; Šafanda et al. 2007; Triglav Čekada et al. 2014).

4 Conclusion

Studies based on climatic indicators from the Slovenian territory have revealed a number of particular periods when climate variations played a major role, whether in the form of changes in glacier extent, lake levels and frequency of floods, or the spread or discontinuity of growth of certain plant species, or simply through historical remarks in written records. Slovenia is climatically diverse, and consequently the data show that palaeoclimate cannot simply be inserted into an overall territory but should be treated on a regional scale with correlations to transboundary palaeoclimate data from broader yet similar regional features (e.g., the southeastern Alps, the Dinaric Alps, the Pannonian Basin, and the Mediterranean region).

The following list of climatic events, nevertheless, summarises all reported changes in the Slovenian territory:

- Before the Holocene: the landscape was dominated by steppes with few trees due to a colder and dry climate. Variability in climate was observed, with warmer periods allowing the spread of mesophilous deciduous trees. A warmer global climate led to major glacial retreats. A trend towards wetter conditions was noted before the climatic warming observed at around 14.8 ka.
- 14.8 ka (Lake Bled): phase of warming. Another phase of warming occurred at around 13.8 ka. The climate became colder and drier after 12.8 ka.
- 15–10 ka: approximate time gap when the borehole temperature profile data from Ljutomer and Šempeter start showing a warming trend occurring after the last glacial period, reaching a maximum temperature around 3 to 2 ka. This maximum could be associated with the HCO.
- The onset of the Holocene: the climate became warmer, leading to widespread temperate deciduous forests in Slovenia. There were increased summer temperatures and drier conditions, leading to increased forest fires.
- 11.4–8.8 ka: varieties of trees such as *Fagus* and *Abies* began to spread, and the climate became less seasonal but colder and wetter. Different regions in Slovenia showed variability in vegetation development due to multiple factors, including regional climates and human impacts.
- 11.3 ka (Bay of Trieste): the earliest evidence of Holocene marine transgression in the cores from the Bay of Strunjan. Most of the Bay of Trieste was inundated by the Adriatic Sea within a few hundred years, marking significant marine transgressions.
- 10.2–4.5 ka (Lake Planina pri Jezeru): the area around the lake was heavily forested, marking a period of lush vegetation. Intermittent periods of increased precipitation and drought were recorded.
- 8.8–6.0 ka: there were fluctuations in vegetation and climate, with indications of drier and warmer periods. These changes were influenced by various factors, including human activities such as forest clearing and farming.
- 8.2 ka: black layers found in speleothems in the Postojna Cave and Črna Jama Cave were analysed, revealing charred carbon remains. These layers suggest that soot from forest fires was transported into the caves, marking an important climatic event.

- 6.1–2.2 ka (Lake Bohinj): several episodes of increased flood activity were noted, associated with wetter climatic conditions. Specific episodes were identified at 6.1–6.0, 5.7–5.55, 5.0–4.6, 3.9, 3.7–3.55, and 2.3–2.2 ka, reflecting patterns of increased terrigenous input due to flooding.
- 5.6–5.4 ka (Triglav Glacier): radiocarbon analysis of organic material from a moraine near the Triglav Glacier indicates that the glacier extent was similar to the LIA, suggesting a colder climate during this period.
- 4.5 ka onward: there was a more significant human impact on vegetation, and the climate became generally colder and wetter. The dominance of human activities, such as forest cutting and metallurgical activities, made it challenging to clearly distinguish the impact of climate variations based on pollen studies.
- 3 to 2 ka (Bay of Trieste): another significant marine transgression pulse was identified during this period, following the earlier Holocene transgressions.
- 1.05–0.85, 0.75–0.65, and 0.25–0.15 ka (M-17 Cave): ice in the M-17 Cave shows periods of positive ice mass balances, implying cooler and wetter conditions during these times. There was also a period of negative ice balance around 0.65–0.55 ka, indicative of warmer and drier conditions.
- AD 536: severe famine due to a volcanic eruption in Iceland that caused summer temperatures in Europe to decrease by 1.6 to 2.5°C compared to the previous 30-year average.
- AD 914 onward: a study focused on European larch in Slovenia, with a notable gap from 1254 to 1414. Climate reconstruction has been mainly utilized from 1415 onward, focusing on June temperatures. Based on oak wood samples, the De Martonne Aridity Index and the Palmer Drought Severity Index were developed for the last ~500 and 350 years, respectively.
- 1300–1570, 1680–1865: historical sources from southwestern Slovenia of periods with colder winters, notably between 1300–1570 and 1680–1865, with winter temperatures being lower than the average temperatures at the end of the 20th century.
- The LIA (Triglav Glacier): the Triglav Glacier had a more significant extent during the LIA compared to its present state, indicating colder climate conditions at that time.
- 1540–1562, first half of the 18th century, 1820–1848: southwestern Slovenia experienced more common occurrences of droughts during these periods, sometimes coinciding with locust plagues.
- 1630–1650, 1680–1716: harsh winters were recorded in these years, corresponding with the Maunder Minimum, a period of low solar activity.
- Late 17th century to early 18th century: weather-related natural disasters were frequent, and, in the second half of the 17th century, climate conditions affected agricultural practices, such as the timing of moving livestock and introducing new crops.
- 1700–1720: heavy rainfall during springs and summers was common.
- 1705, 1911, and 2006: exceptional sunshine values were noted in the southwestern European Alps, based on stable carbon isotope ratios in European larch. However, in 1770 and 1820 colder summer periods were identified in the Slovenian Alps, marking distinct climatic phases.
- 18th–19th centuries: harsh winters were recorded in northeastern Slovenia, notably in the first decade of the 18th century, the second half of the 18th century, and the beginning and end of the 19th century, influencing agricultural practices and social behaviours.
- 1815: the eruption of the Mount Tambora volcano caused temperatures in Slovenia to drop by about 1.5°C, resulting in the »year without a summer« in 1816 and the »year of famine« in 1817.
- 1870–1890: borehole temperature profiles indicate a colder period within these years, possibly relating to the LIA. Then, over the past century and a half, a warming trend has been observed, with the ground surface temperature estimated to have risen by 2°C, as indicated by more recent temperature profiles from boreholes in northeastern Slovenia.
- 1950s to present (Triglav and Skuta glaciers): the Triglav and Skuta glaciers' size and volume have significantly decreased, with current sizes much smaller compared to historical extents, reflecting recent global warming trends.

ACKNOWLEDGMENTS: This work was supported by the Slovenian Research and Innovation Agency projects J1-2478, J4-8216, J6-3141, J6-3142, J6-50213, J6-50214, and J7-1817 and by the Slovenian Research and Innovation Agency research core funding programs »Geography of Slovenia« (P6-0101), »Forest Biology, Ecology, and Technology« (P4-0107), »Archaeological Research« (P6-0064), »Geoenvironments and Geomaterials (P1-0195)«, »Cycling of Substances in the Environment, Mass Balances, Modelling of Environmental Processes, and Risk Assessment« (P1-0143), and »Infrastructure Programme« (I0-0031).

5 References

- Affolter, S., Häuselmann, A., Fleitmann, D., Edwards, R. L., Cheng, H., Leuenberger, M. 2019: Central Europe temperature constrained by speleothem fluid inclusion water isotopes over the past 14,000 years. *Science Advances* 5-6. DOI: <https://doi.org/10.1126/sciadv.aav3809>
- Alley, R. B. 2000: The Younger Dryas cold interval as viewed from central Greenland. *Quaternary Science Reviews* 19-1,5. DOI: [https://doi.org/10.1016/s0277-3791\(99\)00062-1](https://doi.org/10.1016/s0277-3791(99)00062-1)
- Alley, R., Ágústsdóttir, A. 2005: The 8k event: Cause and consequences of a major Holocene abrupt climate change. *Quaternary Science Reviews* 24-10,11. DOI: <https://doi.org/10.1016/j.quascirev.2004.12.004>
- Anadón, P., Moscariello, A., Rodríguez-Lázaro, J., Filippi, M. L. 2006: Holocene environmental changes of Lake Geneva (Lac Léman) from stable isotopes ($\delta^{13}\text{C}$, $\delta^{18}\text{O}$) and trace element records of Ostracod and Gastropod carbonates. *Journal of Paleolimnology* 35-3. DOI: <https://doi.org/10.1007/s10933-005-4009-5>
- Andersen, K. K., Bigler, M., Buchardt, S. L., Clausen, H. B., Dahl-Jensen, D., Davies, S. M., Fischer, et al. 2007: Greenland Ice Core Chronology 2005 (GICC05) and 20 year means of oxygen isotope data from ice core NGRIP. PANGAEA. DOI: <https://doi.org/10.1594/PANGAEA.586838>
- Andersen, N., Lauterbach, S., Erlenkeuser, H., Danielopol, D. L., Namiotko, T., Hüls, M., Belmecheri, S. et al. 2017: Evidence for higher-than-average air temperatures after the 8.2 ka event provided by a Central European $\delta^{18}\text{O}$ record. *Quaternary Science Reviews* 172. DOI: <https://doi.org/10.1016/j.quascirev.2017.08.001>
- Andrič, M. 2007: Holocene vegetation development in Bela krajina (Slovenia) and the impact of first farmers on the landscape. *The Holocene* 17-6. DOI: <https://doi.org/10.1177/0959683607080516>
- Andrič, M. 2011: Poznoglacialna vegetacija v okolici Blejskega jezera in Gribelj (Bela krajina): primerjava v zadnjem stadijalu poledenele in nepoledenele pokrajine. Drobci ledenodobnega okolja, Zbornik ob življenjskem jubileju Ivana Turka. Ljubljana.
- Andrič, M. 2020: Maharski prekop, Stare gmajne and Blatna Brezovica settlements and the vegetation of Ljubljansko barje (Slovenia) in the 4th millennium cal BC. *Documenta Praehistorica* 47. DOI: <https://doi.org/10.4312/dp.47.24>
- Andrič, M., Kroflič, B., Toman, M. J., Ogrinc, N., Dolenc, T., Dobnikar, M., Čermelj, B. 2008: Late Quaternary vegetation and hydrological change at Ljubljansko barje (Slovenia). *Palaeogeography, Palaeoclimatology, Palaeoecology* 270-1,2. DOI: <https://doi.org/10.1016/j.palaeo.2008.09.008>
- Andrič, M., Massaferrò, J., Eicher, U., Ammann, B., Leuenberger, M. C., Martinčič, A., Marinova, E. et al. 2009: A multi-proxy Late-glacial palaeoenvironmental record from Lake Bled, Slovenia. *Hydrobiologia* 631. DOI: <https://doi.org/10.1007/s10750-009-9806-9>
- Andrič, M., Sabatier, P., Rapuc, W., Ogrinc, N., Dolenc, M., Arnaud, F., von Grafenstein, U. et al. 2020: 6600 years of human and climate impacts on lake-catchment and vegetation in the Julian Alps (Lake Bohinj, Slovenia). *Quaternary Science Reviews* 227. DOI: <https://doi.org/10.1016/j.quascirev.2019.106043>
- Andrič, M., Willis, K. J. 2003: The phytogeographical regions of Slovenia: A consequence of natural environmental variation or prehistoric human activity? *Journal of Ecology* 91-5. DOI: <https://doi.org/10.1046/j.1365-2745.2003.00808.x>
- Augustin, L., Barbante, C., Barnes, P. R., Barnola, J. M., Bigler, M., Castellano, E., Cattani, O. et al. 2004: Eight glacial cycles from an Antarctic ice core. *Nature* 429. DOI: <https://doi.org/10.1038/nature02599>
- Balbo, A. L., Andrič, M., Rubinić, J., Moscariello, A., Miracle, P. T. 2006: Palaeoenvironmental and archaeological implications of a sediment core from Polje Čepić, Istria, Croatia. *Geologica Croatica* 59-2. DOI: <https://doi.org/10.4154/GC.2006.08>
- Battarbee, R. W., Grytnes, J. A., Thompson, R., Appleby, P. G., Catalan, J., Korhola, A., Birks, H. J. et al. 2002a: Comparing palaeolimnological and instrumental evidence of climate change for remote mountain lakes over the last 200 years. *Journal of Paleolimnology* 28-1. DOI: <https://doi.org/10.1023/a:1020384204940>
- Battarbee, R. W., Thompson, R., Catalan, J., Grytnes, J. A., Birks, H. J. B. 2002b: Climate variability and ecosystem dynamics of remote alpine and arctic lakes: the MOLAR project. *Journal of Paleolimnology* 28. DOI: <https://doi.org/10.1023/a:1020342316326>
- Bavec, M., Pohar, V. 2009: Kvartar. *Geologija Slovenije*. Ljubljana.
- Bavec, M., Verbič, T. 2004: The extent of Quaternary glaciations in Slovenia. *Developments in Quaternary Sciences* 2-1. DOI: [https://doi.org/10.1016/S1571-0866\(04\)80088-5](https://doi.org/10.1016/S1571-0866(04)80088-5)
- Bavec, M., Verbič, T. 2011: Glacial history of Slovenia. *Developments in Quaternary Sciences* 15. DOI: <https://doi.org/10.1016/b978-0-444-53447-7.00029-5>

- Bennett, K. D., Willis, K. J. 2001: Pollen. Tracking environmental change using lake sediments 3: Terrestrial, algal, and siliceous indicators. Dordrecht. DOI: https://doi.org/10.1007/0-306-47668-1_2
- Berger, A. 1988: Milankovitch theory and climate. *Reviews of Geophysics* 26-4. DOI: <https://doi.org/10.1029/RG026i004p00624>
- Bini, M., Zanchetta, G., Perşoiu, A., Cartier, R., Català, A., Cacho, I., Dean, J. R. et al. 2019: The 4.2 ka BP Event in the Mediterranean region: An overview. *Climate of the Past* 15-2. DOI: <https://doi.org/10.5194/cp-15-555-2019>
- Birks, H. J. B. 1981: The use of pollen analysis in the reconstruction of past climates: a review. *Climate and History. Studies in Past Climates and their Impact on Man*. Cambridge.
- Birks, H. J. B. 2019: Contributions of Quaternary botany to modern ecology and biogeography. *Plant Ecology & Diversity* 12-3-4. DOI: <https://doi.org/10.1080/17550874.2019.1646831>
- Blatnik, M., Obu, J., Košutnik, J., Gabrovšek, F. 2023: Use of terrestrial LiDAR scanner for monitoring of ice thickness in ice caves; Examples from Slovenia. *EuroKarst 2022, Advances in Karst Science*. Cham. DOI: https://doi.org/10.1007/978-3-031-16879-6_27
- Bodri, L., Cermak, V. 2007: Borehole climatology: A new method on how to construct climate. Amsterdam.
- Bond, G., Kromer, B., Beer, J., Muscheler, R., Evans, M. N., Showers, W., Hoffmann, S. et al. 2001: Persistent solar influence on North Atlantic climate during the Holocene. *Science* 294-5549. DOI: <https://doi.org/10.1126/science.1065680>
- Bond, G., Showers, W., Cheseby, M., Lotti, R., Almasi, P., deMenocal, P., Priore, P. et al. 1997: A pervasive millennial-scale cycle in North Atlantic Holocene and glacial climates. *Science* 278-5341. DOI: <https://doi.org/10.1126/science.278.5341.1257>
- Bonin, F. 2001: Proizvodnja soli v Piranskih solinah od 16. do druge polovice 18. stoletja. *Annales, Series Historia et Sociologia* 11-1.
- Bradley, R. S. 1999: *Paleoclimatology: Reconstructing climates of Quaternary*. San Diego.
- Brancelj, A. 2021: Shifts in zooplankton communities in high-mountain lakes induced by singular events (fish stocking, earthquakes): Evidence from a 20-year survey in Slovenia (Central Europe). *Aquatic Ecology* 55-4. DOI: <https://doi.org/10.1007/s10452-021-09858-1>
- Bratož, R. 2019: Pridelava in poraba hrane v provinci Venetia et Histria v vzhodnogotski dobi. Marušičev zbornik. Ljubljana.
- Brayshaw, D. J., Hoskins, B., Black, E. 2010: Some physical drivers of changes in the winter storm tracks over the North Atlantic and Mediterranean during the Holocene. *Philosophical Transactions of the Royal Society, Mathematical, Physical and Engineering Science* 368-1931. DOI: <https://doi.org/10.1098/rsta.2010.0180>
- Brayshaw, D. J., Rambeau, C. M. C., Smith, S. J. 2011: Changes in Mediterranean climate during the Holocene: Insights from global and regional climate modelling. *The Holocene* 21-1. DOI: <https://doi.org/10.1177/0959683610377528>
- Brenčič, M. 2007: Subsidence rate of Ljubljansko barje in Holocene. *Geologija* 50-2. DOI: <https://doi.org/10.5474/geologija.2007.031>
- Brynjólfsson, S., Schomacker, A., Ingólfsson, Ó., Keiding, J. K. 2015: Cosmogenic ³⁶Cl exposure ages reveal a 9.3 ka BP glacier advance and the Late Weichselian-Early Holocene glacial history of the Drangajökull region, northwest Iceland. *Quaternary Science Reviews* 126. DOI: <https://doi.org/10.1016/j.quascirev.2015.09.001>
- Büntgen, U., Frank, D. C., Nievergelt, D., Esper, J. 2006: Summer temperature variations in the European Alps, A.D. 755–2004. *Journal of Climate* 19-21. DOI: <https://doi.org/10.1175/jcli3917.1>
- Caf, N., Sabatier, P., Šmuc, A., Ogrinc, N., Dolenc, M., Rapuc, W., Potočnik, D. et al. 2023: Multi-proxy reconstruction of the Holocene vegetation and land use dynamics in the Julian Alps, north-west Slovenia. *Journal of Quaternary Science* 38-1. DOI: <https://doi.org/10.1002/jqs.3461>
- Carey, A. E., Smith, D. F., Welch, S. A., Zorn, M., Tičar, J., Lipar, M., Komac, B. et al. 2020: The geochemistry of ice in the Triglav Area, Slovenia. *Acta geographica Slovenica* 60-2. DOI: <https://doi.org/10.3986/AGS.7420>
- Carey, A., Zorn, M., Tičar, J., Lipar, M., Komac, B., Welch, S., Smith, D. et al. 2019: Glaciochemistry of cave ice: Paradana and Snežna caves, Slovenia. *Geosciences* 9-2. DOI: <https://doi.org/10.3390/geosciences9020094>

- Carey, M. 2012: Climate and history: A critical review of historical climatology and climate change historiography. *WIREs Climate Change* 3-3. DOI: <https://doi.org/10.1002/wcc.171>
- Cave Register: Speleological Association of Slovenia. Ljubljana, 2024.
- Cermak, V. 1971: Underground temperature and inferred climatic temperature of the past millennium. *Palaeogeography, Palaeoclimatology, Palaeoecology* 10-1. DOI: [https://doi.org/10.1016/0031-0182\(71\)90043-5](https://doi.org/10.1016/0031-0182(71)90043-5)
- Chevalier, M., Davis, B. A. S., Heiri, O., Seppä, H., Chase, B. M., Gajewski, K., Lacourse, T. et al. 2020: Pollen-based climate reconstruction techniques for late Quaternary studies. *Earth-Science Reviews* 210. DOI: <https://doi.org/10.1016/j.earscirev.2020.103384>
- Chiocci, F. L., Casalbore, D., Marra, F., Antonioli, F., Romagnoli, C. 2017: Relative sea level rise, palaeotopography and transgression velocity on the continental shelf. *Under the Sea: Archaeology and Palaeolandscapes of the Continental Shelf*. Cham. DOI: https://doi.org/10.1007/978-3-319-53160-1_3
- Colucci, R. R., Fontana, D., Forte, E., Potleca, M., Guglielmin, M. 2016: Response of ice caves to weather extremes in the southeastern Alps, Europe. *Geomorphology* 261. DOI: <https://doi.org/10.1016/j.geomorph.2016.02.017>
- Colucci, R. R., Žebre, M. 2016: Late Holocene evolution of glaciers in the southeastern Alps. *Journal of Maps* 12-sup1. DOI: <https://doi.org/10.1080/17445647.2016.1203216>
- Comas-Bru, L., Atsawawanunt, K., Harrison, S. et al. 2020. SISAL (Speleothem Isotopes Synthesis and AnaLysis Working Group) database version 2.0. University of Reading Research Data Archive. DOI: <https://doi.org/10.17864/1947.256>
- Cook, B. I., Anchukaitis, K. J., Touchan, R., Meko, D. M., Cook, E. R. 2016: Spatiotemporal drought variability in the Mediterranean over the last 900 years. *Journal of Geophysical Research: Atmospheres* 121-5. DOI: <https://doi.org/10.1002/2015jd023929>
- Cook, E. R., Anchukaitis, K. J., Buckley, B., D'Arrigo, R., Jacoby, G., Wright, W. E. 2010: Asian monsoon failure and megadrought during the last millennium. *Science* 328-5977. DOI: <https://doi.org/10.1126/science.1185188>
- Cook, E. R., Meko, D., Stahle, D. W., Cleaveland, M. K. 1999: Drought reconstructions for the continental United States. *Journal of Climate* 12-4. DOI: [https://doi.org/10.1175/1520-0442\(1999\)012<1145:DRFTCU>2.0.CO;2](https://doi.org/10.1175/1520-0442(1999)012<1145:DRFTCU>2.0.CO;2)
- Cook, E. R., Seager, R., Kushnir, Y., Briffa, K. R., Büntgen, U., Frank, D., Krusic, P. J. et al. 2015: Old World megadroughts and pluvials during the Common Era. *Science Advances* 1-10. DOI: <https://doi.org/10.1126/sciadv.1500561>
- Cook, E., Bird, T., Peterson, M., Barbetti, M., Buckley, B., D'Arrigo, R., Francey, R., Tans, P. 1991: Climatic change in Tasmania inferred from a 1089-year tree-ring chronology of Huon pine. *Science* 253-5025. DOI: <https://doi.org/10.1126/science.253.5025.1266>
- Corona, C., Guiot, J., Edouard, J. L., Chalié, F., Büntgen, U., Nola, P., Urbinati, C. 2010: Millennium-long summer temperature variations in the European Alps as reconstructed from tree rings. *Climate of the Past* 6-3. DOI: <https://doi.org/10.5194/cp-6-379-2010>
- Covelli, S., Fontolan, G., Faganeli, J., Ogrinc, N. 2006: Anthropogenic markers in the Holocene stratigraphic sequence of the Gulf of Trieste (northern Adriatic Sea). *Marine Geology* 230-1,2. DOI: <https://doi.org/10.1016/j.margeo.2006.03.013>
- Culiberg, M. 1991: Late glacial vegetation in Slovenia. Ljubljana.
- Čater, M., Levanič, T. 2019: Beech and silver fir's response along the Balkan's latitudinal gradient. *Scientific Reports* 9-1. DOI: <https://doi.org/10.1038/s41598-019-52670-z>
- Čeč, D. 2015: Družbena percepcija in pravna obravnava zločinov iz stiske: primer eksistenčne krize 1816–1818 na Slovenskem. Upor, nasilje in preživetje: slovenski in evropski primeri iz srednjega in novega veka. Koper.
- Čeč, D. 2017: Gospodarska in družbena kriza zaradi izbruha vulkana Tambora v Indoneziji aprila 1815. *Zgodovina v šoli* 25-1.
- Čufar, K., De Luis, M., Eckstein, D., Kajfež-Bogataj, L. 2008: Reconstructing dry and wet summers in SE Slovenia from oak tree-ring series. *International Journal of Biometeorology* 52-7. DOI: <https://doi.org/10.1007/s00484-008-0153-8>

- Dahl-Jensen, D., Mosegaard, K., Gundestrup, N., Clow, G. D., Johnsen, S. J., Hansen, A. W., Balling, N. 1998: Past temperatures directly from the Greenland ice sheet. *Science* 282-5387. DOI: <https://doi.org/10.1126/science.282.5387.268>
- Dansgaard, W., Johnsen, S. J., Clausen, H. B., Dahl-Jensen, D., Gundestrup, N. S., Hammer, C. U., Hvidberg, C. S. et al. 1993: Evidence for general instability of past climate from a 250-kyr ice-core record. *Nature* 364-6434. DOI: <https://doi.org/10.1038/364218a0>
- Del Gobbo, C., Colucci, R. R., Forte, E., Triglav Čekada, M., Zorn, M. 2016: The Triglav Glacier (South-Eastern Alps, Slovenia): Volume estimation, internal characterization and 2000–2013 temporal evolution by means of ground penetrating radar measurements. *Pure and Applied Geophysics* 173-8. DOI: <https://doi.org/10.1007/s00024-016-1348-2>
- Denton, G. H., Karlén, W. 1973: Holocene climatic variations – Their pattern and possible cause. *Quaternary Research* 3-2. DOI: [https://doi.org/10.1016/0033-5894\(73\)90040-9](https://doi.org/10.1016/0033-5894(73)90040-9)
- Desnoyers, J. 1829: Observations sur un ensemble de dépôts marins plus récents que les terrains tertiaires du bassin de la Seine, et pouvant constituer une formation géologique distincte. *Annales des sciences naturelles* 16.
- Domínguez-Villar, D., Lojen, S., Krklec, K., Baker, A., Fairchild, I. J. 2015: Is global warming affecting cave temperatures? Experimental and model data from a paradigmatic case study. *Climate Dynamics* 45-3,4. DOI: <https://doi.org/10.1007/s00382-014-2226-1>
- Domínguez-Villar, D., Lojen, S., Krklec, K., Kozdon, R., Edwards, R. L., Cheng, H. 2018: Ion microprobe $\delta^{18}\text{O}$ analyses to calibrate slow growth rate speleothem records with regional $\delta^{18}\text{O}$ records of precipitation. *Earth and Planetary Science Letters* 482. DOI: <https://doi.org/10.1016/j.epsl.2017.11.012>
- Easterbrook, D. J. 2016: Temperature fluctuations in Greenland and the Arctic. *Evidence-Based Climate Science*. Amsterdam. DOI: <https://doi.org/10.1016/b978-0-12-804588-6.00008-2>
- Eddy, J. A. 1983: The Maunder Minimum: A reappraisal. *Solar Physics* 89-1. DOI: <https://doi.org/10.1007/bf00211962>
- Ellenberg, H. 1988: *Vegetation ecology of Central Europe*. Cambridge.
- Fairchild, I. J., Baker, A. 2012: *Speleothem science: From process to past environments*. Oxford. DOI: <https://doi.org/10.1002/9781444361094>
- Ferk, M. 2016: Paleopoplave v porečju kraške Ljubljane. *Geografija Slovenije* 33. Ljubljana. DOI: <https://doi.org/10.3986/9789612548452>
- Ferk, M., Gabrovec, M., Komac, B., Zorn, M., Stepišnik, U. 2015: Pleistocene glaciation in Mediterranean Ferk, M., Lipar, M., Šmuc, A., Drysdale, R. N., Zhao, J. 2019: Chronology of heterogeneous deposits in the side entrance of Postojna Cave, Slovenia. *Acta geographica Slovenica* 59-1. DOI: <https://doi.org/10.3986/AGS.7059>
- Feurdean, A., Klotz, S., Brewer, S., Mosbrugger, V., Tămaș, T., Wohlfarth, B. 2008: Lateglacial climate development in NW Romania – Comparative results from three quantitative pollen-based methods. *Palaeogeography, Palaeoclimatology, Palaeoecology* 265-1,2. DOI: <https://doi.org/10.1016/j.palaeo.2008.04.024>
- Feurdean, A., Perșoiu, A., Tanțău, I., Stevens, T., Magyari, E. K., Onac, B. P., Marković, S. et al. 2014: Climate variability and associated vegetation response throughout Central and Eastern Europe (CEE) between 60 and 8 ka. *Quaternary Science Reviews* 106. DOI: <https://doi.org/10.1016/j.quascirev.2014.06.003>
- Ford, D., Williams, P. 2007: *Karst hydrogeology and geomorphology*. Chichester. DOI: <https://doi.org/10.1002/9781118684986>
- Gabrovec, M., Hrvatin, M. 1998: *Površje*. Geografski atlas Slovenije. Ljubljana.
- Gabrovec, M., Hrvatin, M., Komac, B., Ortar, J., Pavšek, M., Topole, M., Triglav Čekada, M., Zorn, M. 2014: Triglavski ledenik. *Geografija Slovenije* 30. Ljubljana. DOI: <https://doi.org/10.3986/9789610503644>
- Gabrovec, M., Ortar, J., Pavšek, M., Zorn, M., Triglav Čekada, M. 2013: The Triglav glacier between the years 1999 and 2012. *Acta geographica Slovenica* 53-2. DOI: <https://doi.org/10.3986/AGS53202>
- Gałka, M., Tanțău, I., Ersek, V., Feurdean, A. 2016: A 9000 year record of cyclic vegetation changes identified in a montane peatland deposit located in the Eastern Carpathians (Central-Eastern Europe): Autogenic succession or regional climatic influences? *Palaeogeography, Palaeoclimatology, Palaeoecology* 449. DOI: <https://doi.org/10.1016/j.palaeo.2016.02.007>
- Genty, D., Baker, A., Vokal, B. 2001: Intra- and inter-annual growth rate of modern stalagmites. *Chemical Geology* 176-1,4. DOI: [https://doi.org/10.1016/s0009-2541\(00\)00399-5](https://doi.org/10.1016/s0009-2541(00)00399-5)

- Genty, D., Vokal, B., Obelic, B., Massault, M. 1998: Bomb ^{14}C time history recorded in two modern stalagmites – importance for soil organic matter dynamics and bomb ^{14}C distribution over continents. *Earth and Planetary Science Letters* 160-3,4. DOI: [https://doi.org/10.1016/s0012-821x\(98\)00128-9](https://doi.org/10.1016/s0012-821x(98)00128-9)
- Gervais, P. 1847: Mémoires de la Section des sciences 1. Montpellier.
- Gestrin, F. 1969: Oris gospodarstva na Slovenskem v obdobju agrarne revolucije in prevlade manufakturne proizvodnje. *Kronika* 17-2.
- Gibbard, P. L., Head, M., J. 2020: The Quaternary Period. *Geologic Time Scale 2020*. Amsterdam. DOI: <https://doi.org/10.1016/B978-0-12-824360-2.00030-9>
- Gibbons, A. 2018: Why 536 was 'the worst year to be alive'. *Science*. DOI: <https://doi.org/10.1126/science.aaw0632>
- Gospodarič, R. 1988: Paleoclimatic record of cave sediments from Postojna Karst. *Annales de la Société géologique de Belgique* 111.
- Gregoire, L. J., Otto-Bliesner, B., Valdes, P. J., Ivanovic, R. 2016: Abrupt Bølling warming and ice saddle collapse contributions to the Meltwater Pulse 1a rapid sea level rise. *Geophysical Research Letters* 43-17. DOI: <https://doi.org/10.1002/2016GL070356>
- Grove, J. M. 2004: Little ice ages: Ancient and modern. London. DOI: <https://doi.org/10.4324/9780203770269>
- Grunewald, K., Scheithauer, J. 2010: Europe's southernmost glaciers: response and adaptation to climate change. *Journal of Glaciology* 56-195. DOI: <https://doi.org/10.3189/002214310791190947>
- Haas, J. N., Richoz, I., Tinner, W., Wick, L. 1998: Synchronous Holocene climatic oscillations recorded on the Swiss Plateau and at timberline in the Alps. *The Holocene* 8-3. DOI: <https://doi.org/10.1191/095968398675491173>
- Hafner, P., McCarroll, D., Robertson, I., Loader, N., Gagen, M., Young, G., Bale, R. et al. 2014: A 520 year record of summer sunshine for the eastern European Alps based on stable carbon isotopes in larch tree rings. *Climate Dynamics* 43-3. DOI: <https://doi.org/10.1007/s00382-013-1864-z>
- Hammer, C. U. 2006: Ice-core chronology. *Glacier Science and Environmental Change*. Oxford. DOI: <https://doi.org/10.1002/9780470750636.ch78>
- Harding, P., Langdon, C., Walsh, A., Biddulph, G. E., Blockley, S. P. E., Milner, A. M., Langdon, P. et al. 2020: The 2.8 BP Event: A high-resolution multiproxy perspective from Diss Mere, Norfolk, UK. EGU General Assembly. DOI: <https://doi.org/10.5194/egusphere-egu2020-11311>
- Hardy, J. T. 2003: Climate change: Causes, effects, and solutions. Chichester.
- Head, M. J., Pillans, B., Zalasiewicz, J. A. 2021: Formal ratification of subseries for the Pleistocene series of the Quaternary System. *Episodes* 44-3. DOI: <https://doi.org/10.18814/epiiugs/2020/020084>
- Higgins, J. A., Kurbatov, A. V., Spaulding, N. E., Brook, E., Introne, D. S., Chimiak, L. M., Yan, Y. et al. 2015: Atmospheric composition 1 million years ago from blue ice in the Allan Hills, Antarctica. *PNAS, Earth, Atmospheric, and Planetary Sciences* 112-22. DOI: <https://doi.org/10.1073/pnas.1420232112>
- Hobart, B., Lisiecki, L. E., Rand, D., Lee, T., Lawrence, C. E. 2023: Late Pleistocene 100-kyr glacial cycles paced by precession forcing of summer insolation. *Nature Geoscience* 16. DOI: <https://doi.org/10.1038/s41561-023-01235-x>
- Horvatinčić, N., Krajcar Bronić, I., Obelić, B. 2003: Differences in the ^{14}C age, $\delta^{13}\text{C}$ and $\delta^{18}\text{O}$ of Holocene tufa and speleothem in the Dinaric Karst. *Palaeogeography, Palaeoclimatology, Palaeoecology* 193. DOI: [https://doi.org/10.1016/S0031-0182\(03\)00224-4](https://doi.org/10.1016/S0031-0182(03)00224-4)
- Hrvatini, M., Zorn, M. 2020: Climate and hydrological changes in Slovenia's mountain regions between 1961 and 2018. *Ekonomika i ekohistorija* 16.
- IPCC 2007. *Climate Change 2007: Synthesis report*. Contribution of Working Groups I, II and III to the Fourth Assessment Report of the Intergovernmental Panel on Climate Change. Intergovernmental Panel on Climate Change. Geneva.
- IPCC 2018. *Global Warming of 1.5°C*. An IPCC Special Report on the impacts of global warming of 1.5°C above pre-industrial levels and related global greenhouse gas emission pathways, in the context of strengthening the global response to the threat of climate change, sustainable development, and efforts to eradicate poverty. Intergovernmental Panel on Climate Change. Geneva.
- Isola, I., Zanchetta, G., Drysdale, R. N., Regattieri, E., Bini, M., Bajo, P., Hellstrom, J. C. et al. 2019: The 4.2 ka event in the central Mediterranean: New data from a Corchia speleothem (Apuan Alps, central Italy). *Climate of the Past* 15-1. DOI: <https://doi.org/10.5194/cp-15-135-2019>

- Ivy-Ochs, S., Kerschner, H., Maisch, M., Christl, M., Kubik, P. W., Schlüchter, C. 2009: Latest Pleistocene and Holocene glacier variations in the European Alps. *Quaternary Science Reviews* 28-21,22. DOI: <https://doi.org/10.1016/j.quascirev.2009.03.009>
- Ivy-Ochs, S., Kerschner, H., Reuther, A., Preusser, F., Heine, K., Maisch, M., Kubik, P. W. et al. 2008: Chronology of the last glacial cycle in the European Alps. *Journal of Quaternary Science* 23-6,7. DOI: <https://doi.org/10.1002/jqs.1202>
- Jansen, E., Overpeck, J., Briffa, K. R., Duplessy, J. C., Joos, F., Masson-Delmotte, V., Olago, D. et al. 2007: Palaeoclimate. The physical science basis. *Climate Change 2007*. Cambridge.
- Jiang, D., Lang, X., Tian, Z., Wang, T. 2012: Considerable model–data mismatch in temperature over China during the Mid-Holocene: Results of PMIP simulations. *Journal of Climate* 25-12. DOI: <https://doi.org/10.1175/jcli-d-11-00231.1>
- Kalis, A. J., Merkt, J., Wunderlich, J. 2003: Environmental changes during the Holocene climatic optimum in central Europe – human impact and natural causes. *Quaternary Science Reviews* 22-1. DOI: [https://doi.org/10.1016/s0277-3791\(02\)00181-6](https://doi.org/10.1016/s0277-3791(02)00181-6)
- Kehrl, L., Conway, H., Holschuh, N., Campbell, S., Kurbatov, A. V., Spaulding, N. E. 2018: Evaluating the duration and continuity of potential climate records from the Allan Hills Blue Ice area, East Antarctica. *Geophysical Research Letters* 45-9. DOI: <https://doi.org/10.1029/2018gl077511>
- Kerschner, H., Ivy-Ochs, S. 2008: Palaeoclimate from glaciers: Examples from the Eastern Alps during the Alpine Lateglacial and early Holocene. *Global and Planetary Change* 60-1,2. DOI: <https://doi.org/10.1016/j.gloplacha.2006.07.034>
- Kolar, N. 2020: Extraordinary winter weather events in the area of Ptuj from 1700 to 1941. *Ekonomska i ekohistorija* 16.
- Komac, B., Pavšek, M., Topole, M. 2020: Climate and weather of Slovenia. The geography of Slovenia: Small but diverse. *World Regional Geography Book Series*. Cham. DOI: https://doi.org/10.1007/978-3-030-14066-3_5
- Kozamernik, E., Colucci, R. R., Stepišnik, U., Forte, E., Žebre, M. 2018: Spatial and climatic characterization of three glacial stages in the Upper Krnica Valley, SE European Alps. *Quaternary International* 470-A. DOI: <https://doi.org/10.1016/j.quaint.2017.05.047>
- Kranjc, A. 2009: Ice change in the caves of Slovenia shown by the old literature. *Data of Glaciological Studies Publication 107, 14th Glaciological Symposium*. Irkutsk.
- Kutzbach, J. E., Guetter, P. J. 1986: The influence of changing orbital parameters and surface boundary conditions on climate simulations for the past 18 000 years. *Journal of the Atmospheric Sciences* 43-16. DOI: [https://doi.org/10.1175/1520-0469\(1986\)043<1726:Tiocop>2.0.Co;2](https://doi.org/10.1175/1520-0469(1986)043<1726:Tiocop>2.0.Co;2)
- Last, W., Smol, J. P. 2001: Tracking environmental change using lake sediments. Volume 2: Physical and geochemical methods. Dordrecht. DOI: <https://doi.org/10.1007/0-306-47670-3>
- Lauterbach, S., Brauer, A., Andersen, N., Danielopol, D. L., Dulski, P., Hüls, M., Milecka, K. et al. 2011: Environmental responses to Lateglacial climatic fluctuations recorded in the sediments of pre-Alpine Lake Mondsee (northeastern Alps). *Journal of Quaternary Science* 26-3. DOI: <https://doi.org/10.1002/jqs.1448>
- Lemieux-Dudon, B., Blayo, E., Petit, J.-R., Waelbroeck, C., Svensson, A., Ritz, C., Barnola, J.-M. et al. 2010: Consistent dating for Antarctic and Greenland ice cores. *Quaternary Science Reviews* 29. DOI: <https://doi.org/10.1016/j.quascirev.2009.11.010>
- Levanič, T. 2005: Vpliv klime na debelinsko rast macesna (*Larix decidua Mill.*) na zgornji gozdni meji v JV Alpah. *Zbornik gozdarstva in lesarstva* 78.
- Lipar, M., Drysdale, R., Zhao, J. X. 2019: The preliminary results of the Holocene stalagmite palaeoenvironmental record from Postojna Cave, Slovenia. *INQUA 2019*. Dublin.
- Lipar, M., Martín-Pérez, A., Tičar, J., Pavšek, M., Gabrovec, M., Hrvatina, M., Komac, B. et al. 2021: Subglacial carbonate deposits as a potential proxy for a glacier's former presence. *Cryosphere* 15-1. DOI: <https://doi.org/10.5194/tc-15-17-2021>
- Liu, Z., Zhu, J., Rosenthal, Y., Zhang, X., Otto-Bliesner, B. L., Timmermann, A., Smith, R. S. et al. 2014: The Holocene temperature conundrum. *PNAS Environmental Sciences* 111-34. DOI: <https://doi.org/10.1073/pnas.1407229111>

- Luterbacher, J., García-Herrera, R., Acker-On, S., Allan, R., Alvarez-Castro, M.-C., Benito, G., Booth, J. et al. 2012: A review of 2000 years of paleoclimatic evidence in the Mediterranean. The Climate of the Mediterranean Region. Amsterdam. DOI: <https://doi.org/10.1016/B978-0-12-416042-2.00002-1>
- Lyell, C. 1839: *Éléments de géologie*. Paris.
- Magny, M. 2004: Holocene climate variability as reflected by mid-European lake-level fluctuations and its probable impact on prehistoric human settlements. *Quaternary International* 113-1. DOI: [https://doi.org/10.1016/s1040-6182\(03\)00080-6](https://doi.org/10.1016/s1040-6182(03)00080-6)
- Magny, M., Haas, J. N. 2004: A major widespread climatic change around 5300 cal. yr BP at the time of the Alpine Iceman. *Journal of Quaternary Science* 19-5. DOI: <https://doi.org/10.1002/jqs.850>
- Magny, M., Joannin, S., Galop, D., Vanni re, B., Haas, J. N., Bassetti, M., Bellintani, P. et al. 2012: Holocene palaeohydrological changes in the northern Mediterranean borderlands as reflected by the lake-level record of Lake Ledro, northeastern Italy. *Quaternary Research* 77-3. DOI: <https://doi.org/10.1016/j.yqres.2012.01.005>
- Magri, D., Vendramin, G. G., Comps, B., Dupanloup, I., Geburek, T., Gomory, D., Lata owa, M. et al. 2006: A new scenario for the Quaternary history of European beech populations: Palaeobotanical evidence and genetic consequences. *New Phytologist* 171-1. DOI: <https://doi.org/10.1111/j.1469-8137.2006.01740.x>
- Mandi , M., Mihevc, A., Leis, A., Lojen, S., Krajcar Broni , I. 2013: Mean residence time of drip water in Postojna Cave, Slovenia. 3rd International Conference Waters in Sensitive and Protected Areas. Zagreb.
- Marcott, S. A., Shakun, J. D., Clark, P. U., Mix, A. C. 2013: A reconstruction of regional and global temperature for the past 11,300 years. *Science* 339-6124. DOI: <https://doi.org/10.1126/science.1228026>
- Marsicek, J., Shuman, B. N., Bartlein, P. J., Shafer, S. L., Brewer, S. 2018: Reconciling divergent trends and millennial variations in Holocene temperatures. *Nature* 554-7690. DOI: <https://doi.org/10.1038/nature25464>
- Martinelli, N. 2004: Climate from dendrochronology: Latest developments and results. *Global and Planetary Change* 40-1,2. DOI: [https://doi.org/10.1016/s0921-8181\(03\)00103-6](https://doi.org/10.1016/s0921-8181(03)00103-6)
- Matero, I. S. O., Gregoire, L. J., Ivanovic, R. F., Tindall, J. C., Haywood, A. M. 2017: The 8.2 ka cooling event caused by Laurentide ice saddle collapse. *Earth and Planetary Science Letters* 473. DOI: <https://doi.org/10.1016/j.epsl.2017.06.011>
- Mautner, A.-K., Gallmetzer, I., Haselmair, A., Schnedl, S.-M., Toma ovych, A., Zuschin, M. 2018: Holocene ecosystem shifts and human-induced loss of *Arca* and *Ostrea* shell beds in the north-eastern Adriatic Sea. *Marine Pollution Bulletin* 126. DOI: <https://doi.org/10.1016/j.marpolbul.2017.10.084>
- May, B., Sp tl, C., Wagenbach, D., Dublyansky, Y., Liebl, J. 2011: First investigations of an ice core from Eisriesenwelt cave (Austria). *The Cryosphere* 5-1. DOI: <https://doi.org/10.5194/tc-5-81-2011>
- Mayewski, P. A., Rohling, E. E., Stager, J. C., Karl n, W., Maasch, K. A., Meeker, L. D., Meyerson, E. A. et al. 2004: Holocene climate variability. *Quaternary Research* 62-3. DOI: <https://doi.org/10.1016/j.yqres.2004.07.001>
- McDermott, F., Frisia, S., Huang, Y., Longinelli, A., Spiro, B., Heaton, T. H. E., Hawkesworth, C. J. et al. 1999: Holocene climate variability in Europe: Evidence from $\delta^{18}\text{O}$, textural and extension-rate variations in three speleothems. *Quaternary Science Reviews* 18-8,9. DOI: [https://doi.org/10.1016/s0277-3791\(98\)00107-3](https://doi.org/10.1016/s0277-3791(98)00107-3)
- Meese, D. A., Gow, A. J., Grootes, P., Stuiver, M., Mayewski, P. A., Zielinski, G. A., Ram, M. et al. 1994: The accumulation record from the GISP2 core as an indicator of climate change throughout the Holocene. *Science* 266-5191. DOI: <https://doi.org/10.1126/science.266.5191.1680>
- Mencej, Z. 1990: Prodni zasipi pod jezerskimi sedimenti Ljubljanskega barja. *Geologija* 31-32.
- Mihevc, A. 2018: Ice caves in Slovenia. *Ice caves*. Amsterdam. DOI: <https://doi.org/10.1016/b978-0-12-811739-2.00030-9>
- Mihevc, A. 2021: Ice in caves and its effect on thermal inversion and permafrost in the case of the Velika ledena jama v Paradani, Smrekova draga and neighbouring dolines. *Acta Carsologica* 50-2,3. DOI: <https://doi.org/10.3986/ac.v50i2-3.10495>
- Muri, G. 2013: Atmospheric deposition chemistry in a subalpine area of the Julian Alps, North-West Slovenia. *Journal of Limnology* 72-2. DOI: <https://doi.org/10.4081/jlimnol.2013.e23>
- Muri, G.,  ermelj, B., Ja imovi , R., Ravnikar, T., Šmuc, A., Tur i , J., Vre a, P. 2018: Factors that contributed to recent eutrophication of two Slovenian mountain lakes. *Journal of Paleolimnology* 59. DOI: <https://doi.org/10.1007/s10933-017-9996-5>

- Muri, G., Čermelj, B., Jačimović, R., Skaberne, D., Šmuc, A., Burnik Šturm, M., Turšič, J., Vreča, P. 2013: Consequences of anthropogenic activity for two remote alpine lakes in NW Slovenia as tracked by sediment geochemistry. *Journal of Paleolimnology* 50-4. DOI: <https://doi.org/10.1007/s10933-013-9738-2>
- Muri, G., Wakeham, S. G., Pease, T. K., Faganeli, J. 2004: Evaluation of lipid biomarkers as indicators of changes in organic matter delivery to sediments from Lake Planina, a remote mountain lake in NW Slovenia. *Organic Geochemistry* 35-10. DOI: <https://doi.org/10.1016/j.orggeochem.2004.06.004>
- Muri, G., Wakeham, S. G., Rose, N. L. 2006: Records of atmospheric delivery of pyrolysis-derived pollutants in recent mountain lake sediments of the Julian Alps (NW Slovenia). *Environmental Pollution* 139-3. DOI: <https://doi.org/10.1016/j.envpol.2005.06.002>
- Nicolussi, K., Kaufmann, M., Melvin, T. M., van der Plicht, J., Schiefeling, P., Thurner, A. 2009: A 9111 year long conifer tree-ring chronology for the European Alps: A base for environmental and climatic investigations. *The Holocene* 19-6. DOI: <https://doi.org/10.1177/0959683609336565>
- Nicolussi, K., Le Roy, M., Schlüchter, C., Stoffel, M., Wacker, L. 2022: The glacier advance at the onset of the Little Ice Age in the Alps: New evidence from Mont Miné and Morteratsch glaciers. *The Holocene* 32-7. DOI: <https://doi.org/10.1177/09596836221088247>
- Novak, A., Šmuc, A., Poglajen, S., Vrabec, M. 2020: Linking the high-resolution acoustic and sedimentary facies of a transgressed Late Quaternary alluvial plain (Gulf of Trieste, northern Adriatic). *Marine Geology* 419. DOI: <https://doi.org/10.1016/j.margeo.2019.106061>
- Nussbaumer, S. U., Steinhilber, F., Trachsel, M., Breitenmoser, P., Beer, J., Blass, A., Grosjean, M. et al. 2011: Alpine climate during the Holocene: A comparison between records of glaciers, lake sediments and solar activity. *Journal of Quaternary Science* 26-7. DOI: <https://doi.org/10.1002/jqs.1495>
- O'Brien, S. R., Mayewski, P. A., Meeker, L. D., Meese, D. A., Twickler, M. S., Whitlow, S. I. 1995: Complexity of Holocene climate as reconstructed from a Greenland ice core. *Science* 270-5244. DOI: <https://doi.org/10.1126/science.270.5244.1962>
- Ogorelec, B., Faganeli, J., Mišič, M., Čermelj, B. 1997: Reconstruction of paleoenvironment in the Bay of Koper (Gulf of Trieste, northern Adriatic). *Annales, Series Historia Naturalis* 7-1.
- Ogorelec, B., Mišič, M., Faganeli, J. 2000: Sečoveljske soline – geološki laboratorij v naravi. *Annales, Series Historia Naturalis* 10-2.
- Ogorelec, B., Mišič, M., Šercelj, A., Cimerman, F., Faganeli, J., Stegnar, P. 1981: Sediment sečoveljske soline. *Geologija* 24-2.
- Ogrin, D. 1994: Modern age climatic fluctuation in the area of the Gulf of Trieste. *Geografski zbornik* 34.
- Ogrin, D. 2003: Suha in mokra leta v submediteranski Sloveniji od 14. do srede 19. stoletja. *Annales, Series Historia Naturalis* 13-1.
- Ogrin, D. 2005: Spreminjanje podnebja v holocenu. *Geografski vestnik* 77-1.
- Ogrin, D. 2007a: Olive growing in Slovenian Istria and climatic limitations to its development. *Moravian Geographical Reports* 15-3.
- Ogrin, D. 2007b: Severe storms and their effects in sub-Mediterranean Slovenia from the 14th to the mid-19th century. *Acta geographica Slovenica* 47-1. DOI: <https://doi.org/10.3986/ags47101>
- Ogrin, D. 2008: Climate, Scale: 1 : 1,000,000. Slovenia in focus. Ljubljana.
- Ogrin, D. 2012: Climate research on Slovenian territory in pre-instrumental period: Weather and climate in the 17th century. *Geografski vestnik* 84-1.
- Ogrinc, N., Covelli, S., Ogorelec, B., Faganeli, J., Budja, M. 2012: Rekonstrukcija paleookolja Tržaškega zaliva v holocenu z uporabo geokemijskih metod. Dolgoročne spremembe okolja. Ljubljana. DOI: <https://doi.org/10.3986/9789612545925>
- Ogrinc, N., Faganeli, J., Ogorelec, B., Čermelj, B. 2007: The origin of organic matter in Holocene sediments in the Bay of Koper (Gulf of Trieste, northern Adriatic Sea). *Geologija* 50-1. DOI: <https://doi.org/10.5474/geologija.2007.014>
- Oppenheimer, C. 2003: Climatic, environmental and human consequences of the largest known historic eruption: Tambora volcano (Indonesia) 1815. *Progress in Physical Geography: Earth and Environment* 27-2. DOI: <https://doi.org/10.1191/0309133303pp379ra>
- Osole, F. 1968: Jamski sediment Notranjsko-Primorskega krasa kot posledica pleistocenskih klimatskih nihanj. Prvi kolokvij o geologiji Dinaridov. Ljubljana.

- Paliska, D., Kerma, S., Čop, R., Bonin, F. 2015: An attempt to demonstrate the influence of Maunder minimum climate on salt production and its price in the Slovenian Istria (Sečovlje salt-pans). *Annales, Series Historia Naturalis* 25-2.
- Park, J., Park, J., Yi, S., Cheul Kim, J., Lee, E., Choi, J. 2019: Abrupt Holocene climate shifts in coastal East Asia, including the 8.2 ka, 4.2 ka, and 2.8 ka BP events, and societal responses on the Korean peninsula. *Scientific Reports* 9-1. DOI: <https://doi.org/10.1038/s41598-019-47264-8>
- Patzelt, G., Bortenschlager, S. 1973: Die postglazialen Gletscher- und Klimaschwankungen in der Venedigergruppe (Hohe Tauern, Ostalpen). *Zeitschrift für Geomorphologie* 16.
- Pavšek, M. 2007: Ledenik pod Skuto kot pokazatelj podnebnih sprememb v slovenskem delu Alp. *Dela* 28. DOI: <https://doi.org/10.4312/dela.28.207-219>
- Pavšek, M. 2023: Triglavski ledenik. DEDI – digitalna enciklopedija naravne in kulturne dediščine na Slovenskem. Internet: <http://dedi.si/dediscina/449-triglavski-ledenik> (6. 2. 2024).
- Petit, R., Aguinagalde, I., de Beaulieu, J. L., Bittkau, C., Brewer, S., Cheddadi, R., Ennos, R. et al. 2003: Glacial refugia: Hotspots but not melting pots of genetic diversity. *Science* 300-5625. DOI: <https://doi.org/10.1126/science.1083264>
- Peyron, O., Bégeot, C., Brewer, S., Heiri, O., Magny, M., Millet, L., Ruffaldi, P. et al. 2005: Late-Glacial climatic changes in Eastern France (Lake Lautrey) from pollen, lake-levels, and chironomids. *Quaternary Research* 64-2. DOI: <https://doi.org/10.1016/j.yqres.2005.01.006>
- Rach, O., Engels, S., Kahmen, A., Brauer, A., Martín-Puertas, C., van Geel, B., Sachse, D. 2017: Hydrological and ecological changes in western Europe between 3200 and 2000 years BP derived from lipid biomarker δD values in lake Meerfelder Maar sediments. *Quaternary Science Reviews* 172. DOI: <https://doi.org/10.1016/j.quascirev.2017.07.019>
- Racine, T. M. E., Spötl, C., Reimer, P. J., Čarga, J. 2022: Radiocarbon constraints on periods of positive cave ice mass balance during the last Millennium, Julian Alps (NW Slovenia). *Radiocarbon* 64-2. DOI: <https://doi.org/10.1017/rdc.2022.26>
- Rahmstorf, S. 2002: Ocean circulation and climate during the past 120,000 years. *Nature* 419-6903. DOI: <https://doi.org/10.1038/nature01090>
- Rajšp, V. 1988: Čarovniški procesi na Slovenskem. *Zgodovinski časopis* 42-3.
- Rajver, D., Šafanda, J., Shen, P. Y. 1998: The climate record inverted from borehole temperatures in Slovenia. *Tectonophysics* 291. DOI: [https://doi.org/10.1016/S0040-1951\(98\)00045-6](https://doi.org/10.1016/S0040-1951(98)00045-6)
- Ran, M., Chen, L. 2019: The 4.2 ka BP climatic event and its cultural responses. *Quaternary International* 521. DOI: <https://doi.org/10.1016/j.quaint.2019.05.030>
- Rapuc, W., Sabatier, P., Arnaud, F., Palumbo, A., Develle, A.-L., Reyss, J.-L., Augustin, L. et al. 2019: Holocene-long record of flood frequency in the Southern Alps (Lake Iseo, Italy) under human and climate forcing. *Global and Planetary Change* 175. DOI: <https://doi.org/10.1016/j.gloplacha.2019.02.010>
- Renssen, H., Seppä, H., Heiri, O., Roche, D. M., Goosse, H., Fichefet, T. 2009: The spatial and temporal complexity of the Holocene thermal maximum. *Nature Geoscience* 2-6. DOI: <https://doi.org/10.1038/ngeo513>
- Ruddiman, W., 2014: *Earth's climate: Past and future*. New York.
- Sabatier, P., Wilhelm, B., Ficetola, G. F., Moiroux, F., Poulenard, J., Develle, A.-L., Bichet, A. et al. 2017: 6-kyr record of flood frequency and intensity in the western Mediterranean Alps – Interplay of solar and temperature forcing. *Quaternary Science Reviews* 170. DOI: <https://doi.org/10.1016/j.quascirev.2017.06.019>
- Schmidt, R., Kamenik, C., Tessadri, R., Koinig, K. A. 2006: Climatic changes from 12,000 to 4,000 years ago in the Austrian Central Alps tracked by sedimentological and biological proxies of a lake sediment core. *Journal of Paleolimnology* 35-3. DOI: <https://doi.org/10.1007/s10933-005-2351-2>
- Schwikowski, M., Brüttsch, S., Gäggeler, H. W., Schotterer, U. 1999: A high-resolution air chemistry record from an Alpine ice core: Fiescherhorn glacier, Swiss Alps. *Journal of Geophysical Research: Atmospheres* 104-D11. DOI: <https://doi.org/10.1029/1998jd100112>
- Seppä, H., Birks, H. J. B. 2001: July mean temperature and annual precipitation trends during the Holocene in the Fennoscandian tree-line area: Pollen-based climate reconstructions. *The Holocene* 11-5. DOI: <https://doi.org/10.1191/095968301680223486>

- Sevink, J., van Bergen, M. J., van der Plicht, J., Feiken, H., Anastasia, C., Huizinga, A. 2011: Robust date for the Bronze Age Avellino eruption (Somma-Vesuvius): 3945±10 calBP (1995±10 calBP). *Quaternary Science Reviews* 30-9,10. DOI: <https://doi.org/10.1016/j.quascirev.2011.02.001>
- Siegwolf, R. T. W., Brooks, J. R., Roden, J., Saurer, M. (eds.) 2021: Stable isotopes in tree rings: Inferring physiological, climatic and environmental responses. Cham. DOI: <https://doi.org/10.1007/978-3-030-92698-4>
- Sigl, M., Winstrup, M., McConnell, J. R., Welten, K. C., Plunkett, G., Ludlow, F., Buntgen, U. et al. 2015: Timing and climate forcing of volcanic eruptions for the past 2,500 years. *Nature* 523-7562. DOI: <https://doi.org/10.1038/nature14565>
- Smith, D. F., Lyons, W. B., Welch, S. A., Zorn, M., Tičar, J., Lipar, M., Carey, A. E. 2023: The chemistry of cave ice: Two examples from Slovenia. *Environmental and Engineering Geoscience* 29-4. DOI: <https://doi.org/10.21663/EEG-D-23-00001>
- Solomina, O. N., Bradley, R. S., Hodgson, D. A., Ivy-Ochs, S., Jomelli, V., Mackintosh, A. N., Nesje, A. et al. 2015: Holocene glacier fluctuations. *Quaternary Science Reviews* 111. DOI: <https://doi.org/10.1016/j.quascirev.2014.11.018>
- Sršen, S. 2019. Dolga rekonstrukcija klime s pomočjo drevesnih branik hrasta (*Quercus species*) na zahodnem delu Panonske nižine. Master thesis, Univerza v Ljubljani. Ljubljana.
- Stepišnik, U., Ferk, M., Gostinčar, P., Černuta, L. 2012: Holocene high floods on the Planina Polje, Classical Dinaric Karst, Slovenia. *Acta Carsologica* 41-1. DOI: <https://doi.org/10.3986/ac.v41i1.44>
- Stroeven, A. P., Harbor, J., Fabel, D., Kleman, J., Hättestrand, C., Elmore, D., Fink, D. 2006: Characteristic cosmogenic nuclide concentrations in relict surfaces of formerly glaciated regions. *Glacier Science and Environmental Change*. Oxford. DOI: <https://doi.org/10.1002/9780470750636.ch90>
- Studen, A. 2018: Lakota na Notranjskem 1865: primer okraja Lož. Lakote in pomanjkanje: slovenski primer. Ljubljana.
- Šafanda, J., Rajver, D. 2001: Signature of the last ice age in the present subsurface temperatures in the Czech Republic and Slovenia. *Global and Planetary Change* 29-3,4. DOI: [https://doi.org/10.1016/S0921-8181\(01\)00093-5](https://doi.org/10.1016/S0921-8181(01)00093-5)
- Šafanda, J., Rajver, D., Correia, A., Dědeček, P. 2007: Repeated temperature logs from Czech, Slovenian and Portuguese borehole climate observatories. *Climate of the Past* 3. DOI: <https://doi.org/10.5194/cp-3-453-2007>
- Šebela, S., Miler, M., Skobe, S., Torkar, S., Zupančič, N. 2015: Characterization of black deposits in karst caves, examples from Slovenia. *Facies* 61-6. DOI: <https://doi.org/10.1007/s10347-015-0430-z>
- Šebela, S., Zupančič, N., Miler, M., Grčman, H., Jarc S. 2017: Evidence of Holocene surface and near-surface palaeofires in karst caves and soils. *Palaeogeography, Palaeoclimatology, Palaeoecology* 485. DOI: <https://doi.org/10.1016/j.palaeo.2017.06.015>
- Šercelj, A. 1966: Pelodne analize pleistocenskih in holocenskih sedimentov Ljubljanskega barja. Ljubljana.
- Šifrer, M. 1963: Nova geomorfološka dognanja na Triglavu. *Geografski zbornik* 8.
- Štok, K. 2022: Preliminarno poročilo meritev z georadarsko metodo na Triglavskem ledeniku. Poročilo, Konstat biro. Ljubljana.
- Thomas, E. R., Wolff, E. W., Mulvaney, R., Steffensen, J. P., Johnsen, S. J., Arrowsmith, C., White, J. W. C. et al. 2007: The 8.2ka event from Greenland ice cores. *Quaternary Science Reviews* 26-1,2. DOI: <https://doi.org/10.1016/j.quascirev.2006.07.017>
- Thornton, P. K., Ericksen, P. J., Herrero, M., Challinor, A. J. 2014: Climate variability and vulnerability to climate change: A review. *Global Change Biology* 20-11. DOI: <https://doi.org/10.1111/gcb.12581>
- Tinner, W., Lotter, A. 2006: Holocene expansions of *Fagus sylvatica* and *Abies alba* in Central Europe: Where are we after eight decades of debate? *Quaternary Science Reviews* 25-5,6. DOI: <https://doi.org/10.1016/j.quascirev.2005.03.017>
- Traverse, A. 2007: Paleopalynology. Dordrecht. DOI: <https://doi.org/10.1007/978-1-4020-5610-9>
- Triglav Čekada, M., Barbo, P., Pavšek, M., Zorn, M. 2020: Changes in the Skuta Glacier (southeastern Alps) assessed using non-metric images. *Acta geographica Slovenica* 60-2. DOI: <https://doi.org/10.3986/ags.7674>
- Triglav Čekada, M., Zorn, M., Colucci, R. R. 2014: Changes in the area of the Canin (Italy) and Triglav Glaciers (Slovenia) since 1893 based on archive images and aerial laser scanning. *Geodetski vestnik* 58-2. DOI: <https://doi.org/10.15292/geodetski-vestnik.2014.02.274-313>

- Urbanc, J., Pezdič, J., Dolenc, T., Perko, S. 1985: O izotopih kisika in ogljika v jamskih vodah in sigah Slovenije. *Acta Carsologica* 8.
- Urbanc, J., Pezdič, J., Krajcar Bronić, I., Srdoč, D. 1987: Comparison of isotopic composition of different forms of calcite precipitated from fresh water. *Isotope Techniques in Water Resources Development, Proceedings of International Symposium on the Use of Isotope Techniques in Water Resources Development*. Vienna.
- Valvasor, J. W. 1689: *Die Ehre dess Hertzogthums Crain*. Ljubljana.
- Vannière, B., Magny, M., Joannin, S., Simonneau, A., Wirth, S. B., Hamann, Y., Chapron, E. et al. 2013: Orbital changes, variation in solar activity and increased anthropogenic activities: Controls on the Holocene flood frequency in the Lake Ledro area, Northern Italy. *Climate of the Past* 9-3. DOI: <https://doi.org/10.5194/cp-9-1193-2013>
- Verbič, T., Horvat A. 2009: *Geologija Ljubljanskega barja*. Ljubljana – kulturna dediščina reke. Ljubljana.
- Vescovi, E., Ravazzi, C., Arpentini, E., Finsinger, W., Pini, R., Valsecchi, V., Wick, L. et al. 2007: Interactions between climate and vegetation during the Lateglacial period as recorded by lake and mire sediment archives in Northern Italy and Southern Switzerland. *Quaternary Science Reviews* 26-11,12. DOI: <https://doi.org/10.1016/j.quascirev.2007.03.005>
- Vokal, B. 1999. The carbon transfer in karst areas – An application to the study of environmental changes and paleoclimatic reconstruction. Ph.D. thesis, Nova Gorica Polytechnic. Nova Gorica.
- Vreča, P., Krajcar Bronić, I., Horvatinčič, N., Barešič, J. 2006: Isotopic characteristics of precipitation in Slovenia and Croatia: Comparison of continental and maritime stations. *Journal of Hydrology* 330-3,4. DOI: <https://doi.org/10.1016/j.jhydrol.2006.04.005>
- Vreča, P., Muri, G. 2006: Changes in accumulation of organic matter and stable carbon and nitrogen isotopes in sediments of two Slovenian mountain lakes (Lake Ledvica and Lake Planina), induced by eutrophication changes. *Limnology and Oceanography* 51-1,2. DOI: https://doi.org/10.4319/lo.2006.51.1_part_2.0781
- Vreča, P., Muri, G. 2010: Sediment organic matter in mountain lakes of north-western Slovenia and its stable isotopic signatures: records of natural and anthropogenic impacts. *Hydrobiologia* 648. DOI: <https://doi.org/10.1007/s10750-010-0148-4>
- Vreča, P., Pavšek, A., Kocman, D. 2022: SLONIP – A Slovenian Web-Based Interactive Research Platform on water isotopes in precipitation. *Water* 14-13. DOI: <https://doi.org/10.3390/w14132127>
- Wake, B. 2015: Global versus local. *Nature Climate Change* 5-11. DOI: <https://doi.org/10.1038/nclimate2858>
- Walker, M., Gibbard, P., Head, M. J., Berkelhammer, M., Björck, S., Cheng, H., Cwynar, L. C. et al. 2019: Formal subdivision of the Holocene series/epoch: A summary. *Journal of the Geological Society of India* 93-2. DOI: <https://doi.org/10.1007/s12594-019-1141-9>
- Walker, M., Johnsen, S., Rasmussen, S. O., Popp, T., Steffensen, J.-P., Gibbard, P., Hoek, W. et al. 2009: Formal definition and dating of the GSSP (Global Stratotype Section and Point) for the base of the Holocene using the Greenland NGRIP ice core, and selected auxiliary records. *Journal of Quaternary Science* 24-1. DOI: <https://doi.org/10.1002/jqs.1227>
- Wanner, H., Solomina, O., Grosjean, M., Ritz, S. P., Jetel, M. 2011: Structure and origin of Holocene cold events. *Quaternary Science Reviews* 30-21,22. DOI: <https://doi.org/10.1016/j.quascirev.2011.07.010>
- Watanabe, Y., Abe-Ouchi, A., Saito, F., Kino, K., O'ishi, R., Ito, T., Kawamura, K., Chan, W.-L. 2023: Astronomical forcing shaped the timing of early Pleistocene glacial cycles. *Communications Earth and Environment* 4. DOI: <https://doi.org/10.1038/s43247-023-00765-x>
- Willis, K. J., Rudner, E., Sümegei, P. 2000: The full-glacial forests of Central and Southeastern Europe. *Quaternary Research* 53-2. DOI: <https://doi.org/10.1006/qres.1999.2119>
- Willis, K., van Andel, T. 2004: Trees or no trees? The environments of central and eastern Europe during the Last Glaciation. *Quaternary Science Reviews* 23-23,24. DOI: <https://doi.org/10.1016/j.quascirev.2004.06.002>
- Wilson, R., Loader, N. J., Rydval, M., Patton, H., Frith, A., Mills, C. M., Crone, A. et al. 2011: Reconstructing Holocene climate from tree rings: The potential for a long chronology from the Scottish Highlands. *The Holocene* 22-1. DOI: <https://doi.org/10.1177/0959683611405237>
- Wirth, S. B., Glur, L., Gilli, A., Anselmetti, F. S. 2013: Holocene flood frequency across the Central Alps – solar forcing and evidence for variations in North Atlantic atmospheric circulation. *Quaternary Science Reviews* 80. DOI: <https://doi.org/10.1016/j.quascirev.2013.09.002>
- Zoller, H. 1960: *Pollenanalytische Untersuchungen zur Vegetationsgeschichte der insubrischen Schweiz*. *Denkschriften Schweiz Naturforschenden Gesellschaft* 83.

- Zorn, M., Ferk, M., Lipar, M., Komac, B., Tičar, J., Hrvatina, M. 2020a: Landforms of Slovenia. The geography of Slovenia: Small but diverse. Cham. DOI: https://doi.org/10.1007/978-3-030-14066-3_3
- Zorn, M., Komac, B. 2007: Naravni procesi v svetih knjigah. Geografski vestnik 79-2.
- Zorn, M., Komac, B., Carey, A., Hrvatina, M., Ciglič, R., Lyons, B. 2020b: The disappearing cryosphere in the southeastern Alps: Introduction to special issue. Acta geographica Slovenica 60-2. DOI: <https://doi.org/10.3986/AGS.9396>
- Zorn, M., Šmid Hribar, M. 2012: A landscape altered by man as a protected area: A case study of the Ljubljana Marsh (Ljubljansko Barje). Ekonomska i ekohistorija 8.
- Zupan Hajna, N., Mihevc, A., Bosák, P., Pruner, P., Hercman, H., Horáček, I., Wagner, J. et al. 2021: Pliocene to Holocene chronostratigraphy and palaeoenvironmental records from cave sediments: Račiška pečina section (SW Slovenia). Quaternary International 605-606. DOI: <https://doi.org/10.1016/j.quaint.2021.02.035>
- Zupan Hajna, N., Mihevc, A., Pruner, P., Bosák, P. 2008a: Palaeomagnetism and Magnetostratigraphy of Karst Sediments in Slovenia. Carsologica 8. Ljubljana.
- Zupan Hajna, N., Pruner, P., Mihevc, A., Schnabl, P., Bosák, P. 2008b: Cave sediments from the Postojnska-Planinska cave system (Slovenia): Evidence of multi-phase evolution in epiphreatic zone. Acta Carsologica 37-1. DOI: <https://doi.org/10.3986/ac.v37i1.160>
- Zwitter, Ž. 2012: Podnebne spremembe na Slovenskem v zadnjem tisočletju. Geografija v šoli 21-1,2.
- Zwitter, Ž. 2013: Vremenska in klimatska zgodovina v koledarjih in podložniških dnevnikih ljubljanskega škofa Tomaža Hrena (1597–1630). Zgodovinski časopis 67-3,4.
- Zwitter, Ž. 2014: Okolje na Kranjskem v 17. stoletju po Slavi vojvodine Kranjske. Studia Valvasoriana: zbornik spremnih študij ob prvem integralnem prevodu Die Ehre Deß Hertzogthums Crain v slovenski jezik. Ljubljana.
- Zwitter, Ž. 2015: Subsistence, prosperity and abandonment of Alpine isolated farms in the dynamic 17th century environment: Case study from the Upper Savinja Valley with special emphasis on tenants' inventories. Ekonomska i ekohistorija 11.
- Zwitter, Ž. 2016: Urbarji iz 16. in 17. stoletja kot vir za okoljsko zgodovino. Urbarji na Slovenskem skozi stoletja. Ljubljana.
- Zwitter, Ž. 2020: Eine Wissensgeschichte der Wiesen und Weiden im Südosten der Alpen im 16. und im frühen 17. Jahrhundert. Mitteilungen des Instituts für Österreichische Geschichtsforschung 128-1. DOI: <https://doi.org/10.7767/miog.2020.128.1.49>

Guidelines for contributing authors in Acta geographica Slovenica

EDITORIAL POLICIES

1 Focus and scope

The *Acta geographica Slovenica* journal is issued by the ZRC SAZU Anton Melik Geographical Institute, published by the ZRC SAZU Založba ZRC, and co-published by the Slovenian Academy of Sciences and Arts.

Acta geographica Slovenica publishes original research articles from all fields of geography and related disciplines and provides a forum for discussing new aspects of theory, methods, issues, and research findings, especially in Central, Eastern, and Southeastern Europe.

Articles presenting new developments and innovative methods in geography are welcome. Submissions should address current research gaps and explore state-of-the-art issues. Research based on case studies should have the added value of transnational comparison and should be integrated into established or new theoretical and conceptual frameworks.

The target readership is researchers, policymakers, students, and others who are studying or applying geography.

The journal is indexed in the following bibliographic databases: Clarivate Web of Science (SCIE – Science Citation Index Expanded; JCR – Journal Citation Report/Science Edition), Scopus, ERIH PLUS, Directory of Open Access Journals (DOAJ), GEOBASE Journals, Current Geographical Publications, EBSCOhost, Georef, FRANCIS, SJR (SCImago Journal & Country Rank), OCLC WorldCat, Google Scholar, and CrossRef.

2 Types of articles

Unsolicited or invited original research articles and review articles are accepted. Articles and materials or sections of them should not have been previously published or be under consideration for publication elsewhere. The articles should cover subjects of current interest within the journal's scope.

3 Special issues

The journal also publishes special issues (thematic supplements). Special issues usually consist of invited articles and present a special topic, with an introduction by the (guest) editors. The introduction briefly presents the topic, summarizes the articles, and provides important implications.

4 Peer-review process

All articles are examined by the editor-in-chief. This includes fact-checking the content, spelling and grammar, writing style, and figures. Articles that appear to be plagiarized, are badly or ghost-written, have been published elsewhere, are outside the scope of the journal, or are of little interest to the readers of *Acta geographica Slovenica* may be rejected. If the article exceeds the maximum length, the author(s) must shorten it before the article is reviewed. The article is then sent to responsible editors, who check the relevance, significance, originality, clarity, and quality of the article. If accepted for consideration, the articles are sent to two or more peer reviewer(s) for double-blind review. Articles are rejected or accepted based on the peer reviews and the editorial board's decision.

5 Publication frequency

Acta geographica Slovenica is published three times a year.

6 Open-access policy

This journal provides immediate open access to the full-text of articles at no cost on the principle of open science, which makes research freely available to the public. There is no article processing fee (Article Processing Charge) charged to authors.

Digital copies of the journal are stored by the repository of ZRC SAZU and the digital department of the Slovenian national library NUK, dLib.

The journal's publication ethics and publication malpractice statement is available online, as well as information on subscriptions and prices for print copies.

AUTHOR GUIDELINES

Before submitting an article, please read the details on the journal's focus and scope, publication frequency, privacy statement, history, peer-review process, open-access policy, duties of participants, and publication ethics. See also the latest version of the author guidelines online. All the materials are available at <https://ags.zrc-sazu.si>.

1 Article structure

Research articles must be prepared using the journal's template (available at <https://ags.zrc-sazu.si>) and contain the following elements:

- **Title:** this should be clear, short, and simple.
- **Information about author(s):** submit names (without academic titles), affiliations, ORCIDiDs, and e-mail addresses through the online submission system (available at <https://ags.zrc-sazu.si>).
- **Highlights:** authors must provide 3–5 highlights in the form of bullets. This section must not exceed 400 characters, including spaces.
- **Abstract:** introduce the topic clearly so that readers can relate it to other work by presenting the background, why the topic was selected, how it was studied, and what was discovered. It should contain one or two sentences about each section (introduction, methods, results, discussion, and conclusions). The maximum length is 800 characters including spaces.
- **Keywords:** include up to seven informative keywords. Start with the research field and end with the place and country.
- **Main text:** the main text must not exceed 30,000 characters, including spaces (without the title, affiliation, abstract, keywords, highlights, reference list, and tables). Do not use footnotes or endnotes. Divide the article into sections with short, clear titles marked with numbers without final dots: **1 Section title**. Use only one level of subsections: **1.1 Subsection title**.

Research articles should have the following structure:

- **Introduction:** present the background of the research problem (trends and new perspectives), state of the art (current international discussion in the field), research gap, motivation, aim, and research questions.
- **Methods:** describe the study area, equipment, tools, models, programs, data collection, and analysis, define the variables, and justify the methods.
- **Results:** follow the research questions as presented in the introduction and briefly present the results.
- **Discussion:** interpret the results, generalize from them, and present related broader principles and relationships between the study and previous research. Critically assess the methods and their limitations, and discuss important implications of the results. Clarify unexpected results or lacking correlations.
- **Conclusion:** present the main implications of the findings, your interpretations, and unresolved questions, offering a short take-home message.

Review articles (narratives, best-practice examples, systematic approaches, etc.) should have the following structure:

- **Introduction:** include 1) the background; 2) the problem: trends, new perspectives, gaps, and conflicts; and 3) the motivation/justification.

- **Material and methods:** provide information, such as data sources (e.g., bibliographic databases), search terms and search strategies, selection criteria (inclusion/exclusion of studies), the number of studies screened and included, and the statistical methods of meta-analysis.
 - **Literature review:** use subheadings to indicate the content of the various subsections. Possible structure: methodological approaches, models or theories, the extent of support for a given thesis, studies that agree with one another versus studies that disagree, chronological order, and geographical location.
 - **Conclusions:** provide the implications of the findings and your interpretations (separate from facts), identify unresolved questions, summarize, and draw conclusions.
- **Acknowledgments:** use when relevant. In this section, authors can specify the contribution of each author.
- **Reference list:** see the guidelines below.

2 Article submission

2.1 Open journal system

Author(s) must submit their contributions through the *Acta geographica Slovenica* Open Journal System (OJS; available at <https://ags.zrc.sazu.si>) using the Word document template (available at <https://ags.zrc.sazu.si>).

Enter all necessary information into the OJS. Any later addition, deletion, or rearrangement of names and affiliations of the author(s) in the authorship list should be made and confirmed by all co-authors before the manuscript has been accepted, and is only possible if approved by the journal editor.

To make anonymous peer review possible, the article text and figures should not include names of the author(s).

Do not use contractions or excessive abbreviations. Use plain text, with sparing use of **bold** and *italics* (e.g., for non-English words). Do not use auto-formatting, such as section or list numbering and bullets.

If a text is unsatisfactory, the editorial board may return it to the author(s) for proofreading or reject the article. See the section on the peer-review process (available at <https://ags.zrc-sazu.si>) for details. Author(s) may suggest reviewers when submitting an article.

2.2 Language

Articles are published in English. All articles have English and Slovenian abstracts.

Articles can be submitted in English or Slovenian.

Authors must take care to produce a high-quality English text. In the case of poor language, the article must be proofread/translated. In such a case, the translation or copyediting costs are borne by the author(s) and must be paid before layout editing. If authors are not Slovene native speakers, Slovenian abstracts are prepared by the editorial board.

2.3 Graphic file submission

Graphic files (figures) need to be submitted to the OJS packed in a single zip file not exceeding 50 MB. Multiple zip files can be uploaded if needed. See chapter 6 for details on how to prepare figures.

3 In-text citation

In-text citations should include the last name of the author(s) or the name of the publisher and the year of publication. Arrange citations by year of publication; for example: (Melik 1955; Melik et al. 1963; Gams 1982a; Gams 1982b; United Nations 1987; Royal Australian ... 1988; Ford and Williams 2007). For references with more than two authors, cite only the first, followed by et al.: (Melik et al. 1956). Give page numbers only for direct quotations, for example: Perko (2016, p. 25) states: »Hotspots are ...« For indirect citations, use this format: (Gunn 2002, cited in Matei et al. 2014).

When presenting publicly archived data, such as statistical and spatial data, describe the name of the dataset, the time frame, and the data provider in the main text only (without citation), for example: »The

2000–2020 population data used in the analysis were provided by Eurostat« If the statistical data were published as a report, cite the document, for example: (European Commission ... 2023).

When citing legal sources such as legislative acts, white papers, etc., provide the short formal title and the year, for example: »The European Commission's White paper on transport published in 2011 sets out ten strategic goals for a competitive and resource-efficient transport system.«

4 References

All references in the reference list must be cited in the text. Arrange references alphabetically and then chronologically if necessary. Identify more than one reference by the same author(s) in the same year with the letters a, b, c, etc., added to the year of publication: (1999a, 1999b). In case there are more than seven authors, list the first seven followed by et al.

Examples of references are given below. The use of »gray literature« is strongly discouraged.

Authors can use the Zotero and Endnote AGS Style templates, which are available in the Article submission section on the <https://ags.zrc-sazu.si>.

4.1 Articles

Last Name1, A. B., Last Name2, C. D. Year: Title. *Journal Name* Volume-Issue. [https://doi.org/...](https://doi.org/)

- Breg Valjavec, M., Janža, M., Smrekar, A. 2018: Environmental risk resulting from historical land degradation in alluvial plains considered for dam planning. *Land Degradation & Development* 29-11. <https://doi.org/10.1002/ldr.3168>
- Kladnik, D., Kruse, A., Komac, B. 2017a: Terraced landscapes: An increasingly prominent cultural landscape type. *Acta geographica Slovenica* 57-2. <https://doi.org/10.3986/AGS.4770>
- Kladnik, D., Šmid Hribar, M., Geršič, M. 2017b: Terraced landscapes as protected cultural heritage sites. *Acta geographica Slovenica* 57-2. <https://doi.org/10.3986/AGS.4628>
- Ni, J., Jin, J., Wang, Y., Li, B., Wu, Q., Chen, Y., Du, S. et al. 2024: Surface ozone in global cities: A synthesis of basic features, exposure risk, and leading meteorological driving factors. *Geography and Sustainability* 5-1. <https://doi.org/10.1016/j.geosus.2023.09.008>
- Unangst, M. 2023: (De)Colonial historical geography and historical GIS. *Journal of Historical Geography* 79. <https://doi.org/10.1016/j.jhg.2022.12.003>
- Van de Kerk, G., Manuel, A. R. 2008: A comprehensive index for a sustainable society: The SSI – The Sustainable Society Index. *Ecological Economics* 66-2,3. <https://doi.org/10.1016/j.ecolecon.2008.01.029>
- Yang, D.-H., Goerge, R., Mullner, R. 2006: Comparing GIS-based methods of measuring spatial accessibility to health services. *Journal of Medical Systems* 30-1. <https://doi.org/10.1007/s10916-006-7400-5>

4.2 Books

Last Name1, A. B., Last Name2, C. D. Year: Book title. *Book Series Title* with Number. Publisher. [https://doi.org/...](https://doi.org/)

If the book is edited by editors, add '(eds.)' before the year of publication.

- Achino, K. F., Velušček, A. 2022: The lake-dwelling phenomenon. *E-Monographiae Instituti Archaeologici Sloveniae* 13. Založba ZRC. <https://doi.org/10.3986/9789610506560>
- Gams, I. 2004: Kras v Sloveniji v prostoru in času. Založba ZRC.
- Hall, T., Barrett, H. 2018: Urban geography. Routledge. <https://doi.org/10.4324/9781315652597>
- Knox, P., Marston, S. 2015: Human geography: Places and regions in global context. Pearson.
- Luc, M., Somorowska, U., Szymańska, J. B. (eds.) 2015: Landscape analysis and planning. *Springer Geography*. Springer. <https://doi.org/10.1007/978-3-319-13527-4>
- Marshall, T. 2016: Prisoners of geography: Ten maps that explain everything about the World. *Politics of Place*. Scribner.
- Mihelič Pulsipher, L., Pulsipher, A., Johansson, O. 2019: World regional geography: Global patterns, local lives. W. H. Freeman.

4.3 Chapters of books or proceedings

Last Name1, A. B., Last Name2, C. D. Year: Chapter title. In: Book Title. *Book Series Title* with Number. Publisher. [https://doi.org/...](https://doi.org/)

- Griffin, A. L. 2018: Cartography, visual perception and cognitive psychology. In: The Routledge Handbook of Mapping and Cartography. Routledge. <https://doi.org/10.4324/9781315736822>
- Solem, M., Boehm, R. 2015: A research coordination network for geography education. In: EUGEO Budapest 2015: Congress programme and abstracts. Hungarian Geographical Society.
- Stethem, C. 2013: Avalanches. In: Encyclopedia of Natural Hazards. Springer. https://doi.org/10.1007/978-1-4020-4399-4_7
- Zorn, M., Ferk, M., Lipar, M., Komac, B., Tičar, J., Hrvatin, M. 2020: Landforms of Slovenia. In: The Geography of Slovenia: Small But Diverse. *World Regional Geography Book Series*. Springer. https://doi.org/10.1007/978-3-030-14066-3_3

4.4 Reports, theses, dissertations, and other materials with authors

Last Name1, A. B., Last Name2, C. D. Year: Title. *Type of document*. Publisher. [https://doi.org/...](https://doi.org/)

- Davies, G. 2017: The place of data papers: Producing data for geography and the geography of data production. *Blog post*. Geo: Geography and Environment.
- Easterbrook, D. J. 1976: Geologic map of western Whatcom County, Washington (1-854-B). *1:62,500 map*. United States Geological Survey.
- Fležar, U., Hočevar, L., Sindičić, M., Gomerčić, T., Konec, M., Slijepčević, V., Bartol, M. et al. 2022: Surveillance of the reinforcement process of the Dinaric - SE Alpine lynx population in the lynx-monitoring year 2020–2021. *Technical report*. LIFE Lynx.
- Hawking, S. 1966: Properties of expanding universes. *Ph.D. thesis*. University of Cambridge. <https://doi.org/10.17863/CAM.11283>
- Hrvatin, M. 2016: Morfometrične značilnosti površja na različnih kamninah v Sloveniji. *Ph.D. thesis*. Univerza na Primorskem.
- Šifrer, M. 1997: Površje v Sloveniji. *Technical report*. Geografski inštitut Antona Melika ZRC SAZU.

4.5 Sources without authors

Use in-text citations only (see Chapter 3). If sources need to be listed in the references use the following style: Publisher Year: Title. *Type of document*. [https://doi.org/...](https://doi.org/)

- European Commission, Eurostat 2023: Quality report on national and regional accounts. *Report*. <https://doi.org/10.2785/825704>
- Geodetska uprava Republike Slovenije 1998: Državna topografska karta Republike Slovenije 1 : 25.000 (Brežice). *1:25,000 map*.
- Royal Australian Survey Corps 1988: Australia 1:50 000 topographic survey (Tamborine, Queensland). *1:50,000 map*.
- United Nations 1987: Report of the World Commission on Environment and Development: Our Common Future. *Report*.
- United States Geological Survey, Earth Resources Observation and Science Center 2018: Shuttle Radar Topography Mission (SRTM) 1 Arc-Second Global. *Dataset*. <https://doi.org/10.5066/F7PR7TFT>

5 Tables

Number all tables in the article uniformly and provide their own titles. The number and the title text are separated by a colon, and the title ends with a period. A table title is located above the corresponding table. Examples:

- Table 1: Number of inhabitants of Ljubljana.
- Table 2: Changes in average air temperature in Ljubljana (Velkavrh 2009).

Tables must be indicated in the main text in parentheses, for example: (Table 1), or as a part of the sentence, for example »... as can be seen in Table 1.« Tables should contain no formatting and must be inserted in the article file.

6 Figures

Figures encompass different graphic presentations used in the article: photography, graphs, illustrations, maps, etc.

Number all figures in the article uniformly and provide their own titles. The number and the title text are separated by a colon, and the title ends with a period. A figure title is located below the corresponding figure. Example:

- Figure 1: Location of measurement points along the glacier.

Figures must be indicated in the main text in parentheses, for example: (Figure 1), or as a part of the sentence, for example »... as can be seen in Figure 1.«

Figures should be exactly 134 mm wide (one page) or 64 mm wide (half page, one column), and up to 200 mm high.

Titles should appear in a caption only. Save colors in CMYK. Use Times New Roman font with a minimum size of 6.

Figures must be submitted as separate files. Multiple graphic files should be uploaded in one zip file. Figures should also be inserted in the main text file in order to ease the review process.

Regardless of the graphic/cartographic software used, save or export figures to the following formats:

- jpg or tiff file for regular photos (use a minimum of 300 dpi),
- xlsx file for graphs made with MS Office Excel,
- pdf or similar common files for maps and illustrations with vector drawings and/or text (embed the font if possible). See chapter 6.3 for details.

If the graphic files cannot be uploaded according to the guidelines, consult the editorial board (ags@zrc-sazu.si) in advance.

To make anonymous peer review possible, the authorship of figures can be added by authors at a later (copyediting) stage, after the review has been completed.

6.1 Photos

Photos must be in raster format with a resolution of at least 300 dpi, preferably in jpg or tiff format.

Figures containing a screenshot should be prepared at the highest possible screen resolution. A figure can be made using Print Screen, and the captured screen is pasted to the selected graphic program (e.g., Paint) and saved as a tiff or jpg file. The size of the image or its resolution must not be changed.

6.2 Graphs

Graphs should be made using MS Excel on separate sheets and accompanied by data.

6.3 Maps and illustrations

Maps should be informative and prepared according to the journal size limitations (see general guidelines defined in chapter 6). Use Times New Roman for the legend (size 8) and colophon (size 6). List scale, source, and copyright in the colophon. List the authors of the content and authors of the maps if needed. Write the colophon in English. Use a graphic scale if possible.

Example of the colophon structure:

Content by: Name Surname

Map by: Name Surname

Source: Institution Year

© Year, Copyright holder

Maps should be submitted in an editable form if possible so that minor errors can be corrected even in the final stages of article production. **The preferred submission file is pdf.** As an exception, maps can be produced in digital raster form with at least 300 dpi resolution, preferably in jpg or tiff format.

Please, pay attention when exporting maps from these software packages:

- if using QGIS, ESRI ArcGIS Pro or similar, maps should be exported as a pdf file,
- if using Gimp, Inkscape, CorelDraw, Adobe Illustrator or similar, two separate files should be prepared: the original software file (e.g. cdr if using CorelDraw) and a pdf file,
- if using ESRI ArcGIS Desktop (ArcMap) with raster layers and vector layers (e.g., a geotiff file for shaded relief and a shp file for roads), three files should be exported and submitted: a pdf or an ai file with all the vector content without transparency (polygons, lines, points, legend, colophon, labels, etc.), a tiff file with a raster background, and a jpg file with all of the content (vector and raster elements) together showing the final version of the map; see an example of the correct file structure (available at <https://ojs.zrc-sazu.si/ags/libraryFiles/downloadPublic/14>) for submitting a map created with ESRI ArcGIS Desktop.

Illustrations should be prepared according to the journal size limitations (see general guidelines defined in chapter 8). Use Times New Roman font size 8. **The preferred submission file is pdf.** As an exception, illustrations can be produced in digital raster form with at least 300 dpi resolution, preferably in jpg or tiff format.

7 Supplementary materials

Authors are encouraged to make the data (input data, results, maps, spatial data, tabular data, etc.) used or generated in the preparation of the article published in *Acta geographica Slovenica* publicly available in a recognized online repository and to provide the editorial board with a link.

The publication of the data in the repository must indicate that the data are part of the published article. The article must be properly cited when using the data.

SUBMISSION PREPARATION CHECKLIST

As part of the submission process, authors are required to check off their submission's compliance with all of the following items, and submissions may be returned to authors who do not adhere to these guidelines.

- I, the corresponding author, declare that this manuscript is original and is therefore based on original research, done exclusively by the authors. All information and data used in the manuscript were prepared by the authors or the authors have properly acknowledged other sources of ideas, materials, methods, and results.
- Authors confirm that they are the authors of the submitting article, which is under consideration to be published (print and online) in the journal *Acta geographica Slovenica* by Založba ZRC, ZRC SAZU.
- All authors have seen and approved the article being submitted.
- The submission has not been previously published, nor it is under consideration in another journal (or an explanation has been provided in Comments to the Editor). Authors have disclosed any prior posting, publication or distribution of all or part of the manuscript to the Editor.
- Upon publishing an article in the journal, the authors agree to license non-exclusive copyrights to ZRC SAZU (Založba ZRC): they retain the copyright in the scope that enables them to continue to use their work, even by publishing it in one of the personal or institutional repositories before the publication of the article in the journal.
- Authors consent to the publication of their works under Creative Commons Attribution-NonCommercial-NoDerivatives 4.0 International (CC BY-NC-ND 4.0).
- Permission has been obtained for the use (in printed and electronic format) of copyrighted material from other sources, including online sources. Restrictions on the transfer of copyright on this material have been clearly indicated.
- All the necessary permits to work with people have been obtained in the research related to the article (in accordance with the applicable laws and institutional guidelines and approved by the relevant institutions).
- The journal policies and guidelines have been reviewed and followed.
- The metadata (title, abstract, keywords, authors, affiliation, ORCID, etc.) are provided in English (Slovenian authors must also provide the metadata in Slovenian).
- The list of authors is complete. Failure to do so may result in co-authors not being listed on the article at publication.
- The submission is in Microsoft Word format and the document template was used (single-spaced text, 12-point font, no formatting except italics and bold).
- The article has been checked for spelling and grammar.
- Figures are provided as separate graphic files: editable vector format (e.g., cdr, ai, pdf) for maps and illustrations; jpg or tiff for photographs; xlsx for graphs.
- Tables are placed in the Word file with text in the appropriate place.
- The reference list was prepared following the guidelines.
- All references in the reference list are cited in the text.
- Where available, URLs and DOI numbers for references are provided.
- Graphic files are in one zip file.
- Authors agree that any costs of English proofreading are borne by the author(s). No additional costs are associated with the submission.
- The instructions for ensuring a double-blind review have been followed.

ACTA GEOGRAPHICA SLOVENICA EDITORIAL REVIEW FORM

This is the review form for editorial review (version 15) of an article submitted to the AGS journal.

This is an original scientific article.

(The article is original and the first presentation of research results with the focus on methods, theoretical aspects or a case study.)

- Yes
- No

The article follows the standard IMRAD/ILRAD scheme.

- Yes
- No

The article's content is suitable for reviewing in the AGS journal.

(The article is from the field of geography or related fields of interest, the presented topic is interesting for the readers of *Acta geographica Slovenica* and well presented. In case of a negative answer, add comments below.)

- Yes
- No

Editorial notes regarding the article's content.

The reference list is suitable (the author cites previously published articles with similar topics from other relevant geographic scientific journals).

- Yes, the author cited previously published articles on a similar topic.
- No, the author did not cite previously published articles on a similar topic.

Notes to the editor-in-chief regarding previously published scientific work.

Is the language of the article appropriate and understandable?

RECOMMENDATION OF THE EDITOR

- The article is accepted and can be sent to the review process.
- Reconsider after a major revision (see notes).
- The article is rejected.

ACTA GEOGRAPHICA SLOVENICA REVIEW FORM

This is the *Acta geographica Slovenica* review form (version 8).

1 RELEVANCE

Are the findings original and is the article therefore a significant one?

- yes
- no
- partly

Is the article suitable for the subject focus of the AGS journal?

- yes
- no

2 SIGNIFICANCE

Does the article discuss an important problem in geography or related fields?

- yes
- no
- partly

Does it bring relevant results for contemporary geography?

- yes
- no
- partly

What is the level of the novelty of the research presented in the article?

- high
- middle
- low

3 ORIGINALITY

Has the article already been published or is it too similar to already published work?

- yes
- no

Does the article discuss a new issue?

- yes
- no

Are the presented methods sound and adequate?

- yes
- no
- partly

Do the presented data support the conclusions?

- yes
- no
- partly

4 CLARITY

Is the article clear, logical, and understandable?

- yes
- no

If necessary, add comments and recommendations to improve the clarity of the title, abstract, keywords, introduction, methods or conclusion:

5 QUALITY

Is the article technically sound? (If not, the author should discuss with the Editorial Board [ags@zrc-sazu.si] for assistance.)

- yes
- no

Does the article take into account relevant current and past research on the topic?

- yes
- no

Propose amendments if no is selected:

Is the references list at the end of the article adequate?

- yes
- no

Propose amendments if no is selected:

Is the quoting in the text appropriate?

- yes
- no
- partly

Propose amendments if no is selected:

Which tables are not necessary?

Which figures are not necessary?

COMMENTS OF THE REVIEWER

Comments of the reviewer on the contents of the article:

Comments of the reviewer on the methods used in the article:

RECOMMENDATION OF THE REVIEWER TO THE EDITOR-IN-CHIEF

Please rate the article from 1 [low] to 100 [high] (this will NOT be presented to the author):

Personal notes of the reviewer to the editor-in-chief (this will NOT be presented to the authors):

COPYRIGHT NOTICE

Authors that publish with this journal agree to the following terms:

- The authors confirm that they are the sole authors of the article submitted for publication (print and online) in the journal *Acta geographica Slovenica* of ZRC SAZU, Založba ZRC. The names of the authors will be evident in the article in the journal. All decisions regarding the layout and distribution of the article are in the hands of ZRC SAZU.
- The authors guarantee that the work is their own original creation and that it does not violate any legal or common-law copyright or property rights of third parties. In the case of any third-party claims, the authors agree to defend the interests of the publisher and to pay any costs.
- The copyright of the work published in this publication remains with the authors. The author licenses ZRC SAZU the right to publish, reproduce, and distribute the article in print and electronic form in various formats in the ZRC SAZU journal. The authors agree that, if the article is reused, ZRC SAZU obtains attribution to the original publisher, and the article shall be made available to the public under Creative Commons Attribution-NonCommercial-NoDerivatives 4.0 International (CC BY-NC-ND 4.0). Users may access and use all journal archives and individual articles published therein under the terms of this license. This does not apply to third-party materials published in the articles.
- The same applies to some (older) articles, in which the indications »© authors and ZRC SAZU« or »© ZRC SAZU« are used: the authors are the sole copyright holders.
- Authors may enter into separate, additional contractual arrangements for the nonexclusive distribution of the version of their work that appears in the journal (e.g., place it in an institutional repository or publish it in a book), provided that they acknowledge that the initial publication was made in this journal.
- Authors may and are encouraged to post the final pdf version of their article online (e.g., in institutional repositories or on their websites) because this may lead to productive sharing and earlier and greater citation of the published work.
- Authors grant permission to the publisher to modify the article to comply with the publisher's guidelines. No honoraria are paid for articles in *Acta geographica Slovenica* or for reviews.

PRIVACY STATEMENT

By submitting their articles or other contributions the authors and reviewers consent to the collection and processing of their personal data (e.g., name, surname and email address) for the purposes of effective communication, editing, and publication of articles or other contributions.

The names and e-mail addresses provided to this journal site will be used exclusively for the stated purposes of this journal and will not be made available for any other purpose or to any other party.

PUBLISHER

Anton Melik Geographical Institute
Research Centre of the Slovenian Academy of Sciences and Arts
PO Box 306
SI-1001 Ljubljana
Slovenia

SOURCES OF SUPPORT

The journal is subsidized by the Slovenian Research and Innovation Agency (B6-7326) and is issued in the framework of the Geography of Slovenia long-term core research programme (P6-0101). The journal is also supported by the Slovenian Academy of Sciences and Arts.

JOURNAL HISTORY

Acta geographica Slovenica (print version: ISSN: 1581-6613, digital version: ISSN: 1581-8314) was founded in 1952. It was originally named *Geografski zbornik / Acta geographica* (print ISSN 0373-4498, digital ISSN: 1408-8711). Altogether, 42 volumes were published. In 2002 *Geographica Slovenica* (ISSN 0351-1731, founded in 1971, 35 volumes) was merged with the journal.

Since 2003 (from Volume 43 onward), the name of the joint journal has been *Acta geographica Slovenica*. The journal continues the numbering system of the journal *Geografski zbornik / Acta geographica*.

Until 1976, the journal was published periodically, then once a year, twice a year from 2003, and three times a year since 2019.

The online version of the journal has been available since 1995. In 2013, all volumes of the magazine were digitized from the beginning of its publication to including 1994.

All articles of the journal are available free of charge in digital form on the journal website <http://ags.zrc-sazu.si>.

Those interested in the history of the journal are invited to read the article »The History of *Acta geographica Slovenica*« in volume 50-1.

ISSN: 1581-6613
UDC – UDK: 91
ACTA GEOGRAPHICA SLOVENICA
GEOGRAFSKI ZBORNIK

64-2
2024

2024, ZRC SAZU, Geografski inštitut Antona Melika
Print/tisk: Birografika Bori

Ljubljana 2024

ACTA GEOGRAPHICA SLOVENICA
GEOGRAFSKI ZBORNIK
64-2 • 2024

Contents

Matej LIPAR, Sonja LOJEN, Mateja BREG VALJAVEC, Maja ANDRIČ,
Andrej ŠMUC, Tom LEVANIC, Jure TIČAR, Matija ZORN, Mateja FERK
Holocene climate variability in Slovenia: A review

7

ISSN 1581-6613



9 771581 661010